

Topic Summary Briefing

Ethnicity, Language and Religion at Census Day 2021

Cumbria and Districts

Aim

On the 29th of November 2022 the Office for National Statistics (ONS) released the 3rd in a series of 'topic summaries' based on the results of the 2021 Census, which related to ethnicity, language and religion at Census Day 2021. This briefing provides an analysis of the ethnicity, language and religion topic summary for Cumbria and districts.

Important Notes

In this briefing any reference to 'national' figures refers to England & Wales. Furthermore, while district results are included in all figures, they are only noted within the narrative text accompanying the figures if they are within the top or bottom five of all Lower Tier Local Authorities (LTLAs) nationally. Any results relate to Census Day 2021 and any change refers to proportional change between Census Day 2011 and Census Day 2021. Finally, all Census results vary considerably across Cumbria's wards, Lower Super Output Areas (LSOAs) and Output Areas (OAs). While some OA level maps are included in this briefing, a full range of sub-district level mapping and profiles will be provided via the Cumbria Observatory website (please see Further Information section).

Key Points

Ethnic Group

- Of Cumbria's 499,800 usual residents, the greatest proportion identified their ethnic group as 'White British' (94.9% vs. national 74.4%).
- Compared to the national average, Cumbria had a much lower proportion of residents who identified their ethnic group as an ethnic minority group (including White minorities), (5.1% vs. national 25.6%).
- Nationally, Allerdale and Copeland had the 1st and 2nd largest proportions of residents who identified their ethnic group as 'White British' and the 1st and 2nd smallest proportions of residents who identified their ethnic group as an ethnic minority group (including White minorities).
- In Cumbria the residents who identified their ethnic group as 'White British' decreased (-1.6% vs. national -1.7%), while residents who identified their ethnic group as an ethnic minority group (including White minorities) increased proportionally (+44.8% vs. national +39.3%).

Proficiency in English

- Of Cumbria's 486,800 usual residents aged 3+, the greatest proportion had English as their main language (97.9% vs. national 91.1%).
- When compared to the national average, Cumbria had a lower proportion of residents aged 3+ who cannot speak English (Cumbria 0.1% vs. national 0.3%).
- Nationally, Copeland had the 4th largest proportion of residents who had English as their main language.
- The largest proportional change in Cumbria was in residents who cannot speak English (+41.5% vs. national +16.8%).

Main Language

- The most common non English main language in Cumbria was Polish.
- Polish was the most common non English main language in Allerdale, Carlisle, Copeland and South Lakeland.
- In Barrow-in-Furness the most common non English main language was Tagalog or Filipino and in Eden the most common non English main language was Romanian.

Household Language

- Of Cumbria's 229,000 households, the greatest proportion reported that all adults in the household had English as a main language (97.5 vs. national 89.6%).
- Compared to the national average, Cumbria had a much lower proportion of households with no people in the household with English as a main language (Cumbria 1.3% vs. national 4.8%).
- The largest proportional change in Cumbria was in households with 'no adults but at least one person aged 3 to 15 with English as a main language' (+191.7% vs. national +81.6%).
- Cumbria also experienced a substantial increase in numbers of households with 'no people in the household with English as a main language' (+37.5% vs. national +19.8%).

Religion

- Of Cumbria's 499,800 usual residents, the greatest proportion described themselves as Christian (57% vs. national 46.2%).
- Compared to national average, Cumbria had a much lower proportion of residents who described themselves as having a religion other than Christian (Cumbria 1.3% vs. national 10.6%).
- The 2nd greatest proportion of Cumbria's residents described themselves as having 'no religion' (35.8% vs. national average 37.2%).
- Nationally, Copeland had the 3rd largest proportion of residents who described themselves as Christian.
- Nationally, Allerdale had the 2nd smallest proportion of residents who described themselves as having a religion other than Christian.
- The largest proportional change in Cumbria was in residents who described themselves as having no religion (+76.4% vs. national +57.2%).

Background

Every 10 years the Office for National Statistics (ONS) carries out a census to find out more about the population of England & Wales and the make-up of local communities. The most recent census took place on Sunday the 21st of March 2021. The results of the Census are used to plan for, and allocate resources to, services such as transport, healthcare and education. Census data on population also informs decisions about the allocation of local authority funding.

Census results require significant quality assurance work to ensure accuracy, including adjustment for people who have not completed the Census questionnaire. 2021 Census results are being released in three phases. The ONS began the second phase of 2021 Census results on Wednesday the 2nd of November 2022 by releasing the first of a series of datasets grouped by theme, known as topic summaries. The 3rd topic summary relates to ethnicity, language and religion. The following briefing provides an analysis for Cumbria and districts based on the on the 2021 Census Ethnicity, Language and Religion Topic Summary.

Ethnic Group

Figure 1: Usual Resident Population at Census Day 2021: By Ethnic Group:

Ethnic Group: 2021: %

Area Code	Area Name	All Persons No. Persons	White: British %	White: Other %	Mixed / Multiple Ethnic Group %	Asian / Asian British %	Black / African / Caribbean / Black British %	Other Ethnic Group %	Ethnic Minority (Including White Minorities) %
E07000026	Allerdale	96.2K	96.7%	1.8%	0.7%	0.6%	0.1%	0.2%	3.3%
E07000027	Barrow-in-Furness	67.4K	95.7%	1.4%	0.8%	1.4%	0.4%	0.4%	4.3%
E07000028	Carlisle	110.0K	92.7%	4.1%	0.9%	1.5%	0.3%	0.5%	7.3%
E07000029	Copeland	67.1K	96.7%	1.3%	0.7%	0.8%	0.3%	0.3%	3.3%
E07000030	Eden	54.7K	94.8%	3.3%	0.7%	0.8%	0.2%	0.3%	5.2%
E07000031	South Lakeland	104.5K	93.8%	3.9%	1.0%	0.8%	0.2%	0.3%	6.2%
E10000006	Cumbria	499.8K	94.9%	2.8%	0.8%	1.0%	0.2%	0.3%	5.1%
K04000001	England and Wales	59597.5K	74.4%	7.3%	2.9%	9.3%	4.0%	2.1%	25.6%

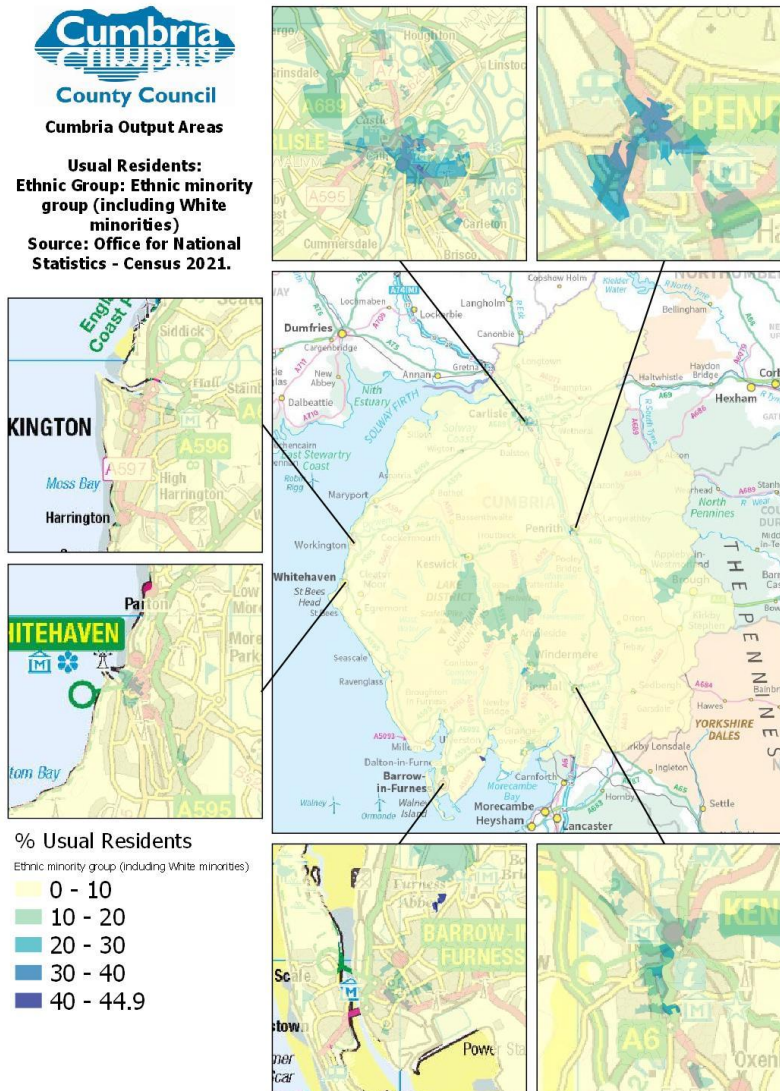
Source: 2021 Census, Office for National Statistics, figures may not sum due to rounding.

Of Cumbria's 499,800 usual residents, the greatest proportion identified their ethnic group as 'White British' (94.9%); this was much higher than the national average (74.4%). Inversely, Cumbria had a much lower proportion of residents who identified their ethnic group as an ethnic minority group (including White minorities); Cumbria 5.1% vs. England % Wales 25.6%.

Of all LTLAs nationally:

- Allerdale and Copeland had the 1st and 2nd largest proportions of residents who identified their ethnic group as 'White British' and the 1st and 2nd smallest proportions of residents who identified their ethnic group as an ethnic minority group (including White minorities).
- Copeland and Barrow-in-Furness had the 2nd and 3rd smallest proportions of residents who identified their ethnic group as 'White: Other'.
- Allerdale, Copeland and Eden had the 1st, 2nd and 3rd smallest proportions of residents who identified their ethnic group as 'Mixed / Multiple Ethnic Group'.
- Allerdale had the 4th smallest proportion of residents who identified their ethnic group as 'Asian / Asian British', as well as the smallest proportion of residents who identified their ethnic group as 'Black / African / Caribbean / Black British'.

Figure 2: Usual Resident Population at Census Day 2021: Ethnic minority group (including White minorities): By Output Area



Reproduced from the Ordnance Survey mapping with the permission of the Controller of Her Majesty's Stationery Office © Crown Copyright and Database Right 2022. Unauthorised reproduction infringes Crown Copyright and may lead to prosecution or Civil Proceedings. Ordnance Survey L.A. Licence 100019596 Cumbria County Council

Figure 3: Population Change: 2011-2021: By Ethnic Group:

Ethnic Group: 2011 -2021: % Change

Area Code	Area Name	White: British	White: Other	Mixed / Multiple Ethnic Group	Asian / Asian British	Black / African / Caribbean / Black British	Other Ethnic Group	Ethnic Minority (Including White Minorities)
E07000026	Allerdale	-1.2	29.7	47.2	13.2	15.1	285.2	35.7
E07000027	Barrow-in-Furness	-3.9	6.9	52.8	49.9	257.1	191.7	45.0
E07000028	Carlisle	-0.2	36.9	81.9	30.4	129.3	407.9	50.3
E07000029	Copeland	-5.6	6.3	32.7	-13.0	120.2	200.0	15.6
E07000030	Eden	1.7	82.6	74.4	49.0	295.5	270.0	83.0
E07000031	South Lakeland	-1.1	41.5	63.3	3.2	37.2	252.7	42.0
E10000006	Cumbria	-1.6	36.7	59.9	20.7	106.4	279.4	44.8
K04000001	England and Wales	-1.7	41.3	40.3	30.9	29.2	122.7	39.3

Source: 2021 Census, Office for National Statistics, figures may not sum due to rounding.

The number of residents in Cumbria who identified their ethnic group as ‘White British’ decreased proportionally (-1.6% vs. national -1.7%). In contrast, the number of residents in Cumbria who identified their ethnic group as an ethnic minority group (including White minorities) increased proportionally (+44.8% vs. national +39.3%).

Of all LTLAs nationally, Copeland had the largest proportional decrease in residents who identified their ethnic group as ‘Asian / Asian British’, while Eden and Barrow-in-Furness had the 1st and 2nd largest increases in residents who identified their ethnic group as ‘Black / African / Caribbean / Black British’.

Proficiency in English

Figure 4: Usual Resident Population at Census Day 2021: By Proficiency in English:

Proficiency in English: 2021: %

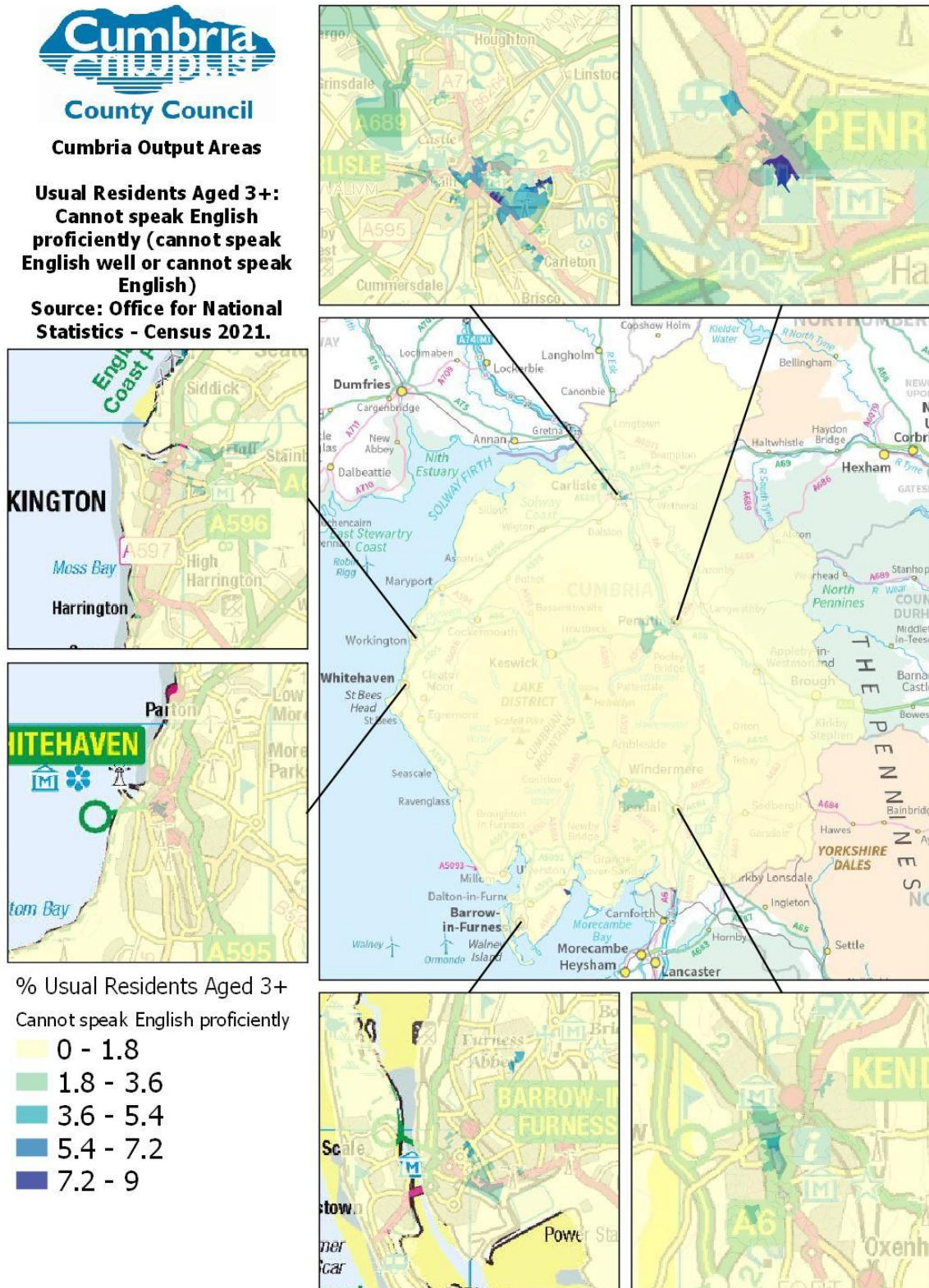
Area Code	Area Name	No. Persons Age 3+	Main language is English %	Main language is not English: Can speak English very well %	Main language is not English: Can speak English well %	Main language is not English: Cannot speak English well %	Main language is not English: Cannot speak English %
E07000026	Allerdale	93.7K	98.9%	0.6%	0.4%	0.1%	0.0%
E07000027	Barrow-in-Furness	65.4K	98.4%	0.7%	0.5%	0.3%	0.1%
E07000028	Carlisle	106.9K	96.4%	1.5%	1.4%	0.7%	0.1%
E07000029	Copeland	65.3K	99.0%	0.5%	0.3%	0.1%	0.0%
E07000030	Eden	53.5K	97.7%	1.0%	1.0%	0.3%	0.1%
E07000031	South Lakeland	102.2K	97.5%	1.2%	1.0%	0.3%	0.0%
E10000006	Cumbria	486.8K	97.9%	1.0%	0.8%	0.3%	0.1%
K04000001	England and Wales	57704.3K	91.1%	3.9%	3.2%	1.5%	0.3%

Source: 2021 Census, Office for National Statistics, figures may not sum due to rounding.

Of Cumbria’s 486,800 usual residents aged 3+, the greatest proportion had English as their main language (97.9%); higher than the national average (91.1%). Inversely, Cumbria had a lower proportion of residents aged 3+ who cannot speak English proficiently; cannot speak English well (Cumbria 0.3% vs. national 1.5%) and cannot speak English (Cumbria 0.1% vs. national 0.3%).

Of all LTLAs nationally, Copeland had the 4th largest proportion of residents who had English as their main language.

Figure 5: Usual Resident Population at Census Day 2021: Proficiency in English: Cannot speak English proficiently (cannot speak English well or cannot speak English): By Output Area:



Reproduced from the Ordnance Survey mapping with the permission of the Controller of Her Majesty's Stationery Office © Crown Copyright and Database Right 2022. Unauthorised reproduction infringes Crown Copyright and may lead to prosecution or Civil Proceedings. Ordnance Survey L A Licence 100019596 Cumbria County Council

Figure 6: Proportional Change: 2011-2021: By Proficiency in English:

Proficiency in English: 2011-2021: % Change

Area Code	Area Name	Main language is English	Main language is not English: Can speak English very well	Main language is not English: Can speak English well	Main language is not English: Cannot speak English well	Main language is not English: Cannot speak English
E07000026	Allerdale	0.1	19.0	4.8	-20.0	39.3
E07000027	Barrow-in-Furness	-2.7	21.7	26.9	62.5	70.8
E07000028	Carlisle	2.0	53.2	28.4	30.0	13.6
E07000029	Copeland	-4.5	9.1	-31.8	-29.3	61.5
E07000030	Eden	3.6	58.3	66.3	52.5	142.1
E07000031	South Lakeland	0.8	26.4	8.5	20.2	26.1
E10000006	Cumbria	0.0	34.0	18.3	20.9	41.5
K04000001	England and Wales	5.5	31.0	17.3	21.2	16.8

Source: 2021 Census, Office for National Statistics, figures may not sum due to rounding.

The largest proportional change in Cumbria was in the number of residents who ‘cannot speak English’ (+41.5% vs. national +16.8%). However, Cumbria also experienced a substantial increase in numbers of residents who did not have English as a main language but ‘can speak English very well’ (+34% vs. national +31%).

Of all LTLAs nationally, Copeland had the 4th largest decrease in residents with English as a main language, the 3rd largest decrease in residents without English as a main language but who can speak English well, and also the 3rd largest decrease in residents without English as a main language who cannot speak English well.

Main Language

Figure 7: Cumbria: Top 10 Languages Spoken (Excluding English): Census Day 2021:

Main Language: Top 10 (Excluding English: 2021: No. Persons Aged 3+: Cumbria

Main language (detailed)	No. Persons (Age 3+)
Other European language (EU): Polish	2927
Other European language (EU): Romanian	1558
Other European language (EU): Hungarian	484
Spanish	409
Arabic	363
Portuguese	308
East Asian language: All other Chinese	285
Turkish	277
East Asian language: Tagalog or Filipino	267
Other European language (EU): Bulgarian	250

Source: 2021 Census, Office for National Statistics.

The most common non English main language in Cumbria was Polish. At district level, Polish was the most common non English main language in Allerdale, Carlisle, Copeland and South Lakeland. However, in Barrow-in-Furness the most common non English main language was Tagalog or Filipino and in Eden the most common non English main language was Romanian.

Household Language

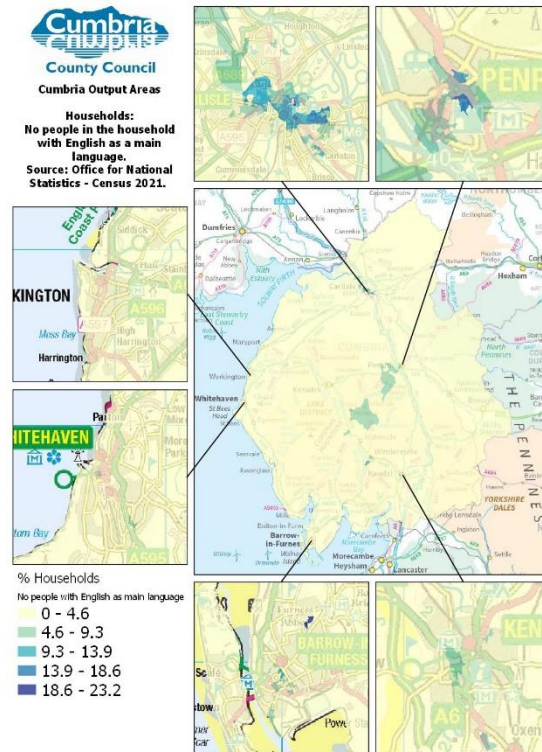
Figure 8: Households at Census Day 2021: By Household Language:

Area Code	Area Name	All Households No.	All adults in household have English as a main language %	At least one but not all adults in household have English as a main language	No adults in household but at least one person aged 3 to 15 has English as a main language %	No people in household have English as a main language %
E07000026	Allerdale	44.0K	98.5%	0.7%	0.2%	0.6%
E07000027	Barrow-in-Furness	31.3K	98.0%	0.7%	0.2%	1.0%
E07000028	Carlisle	50.7K	95.9%	1.2%	0.5%	2.5%
E07000029	Copeland	30.8K	98.6%	0.7%	0.1%	0.6%
E07000030	Eden	24.6K	97.4%	1.0%	0.3%	1.2%
E07000031	South Lakeland	47.7K	97.1%	1.3%	0.3%	1.3%
E10000006	Cumbria	229.0K	97.5%	1.0%	0.3%	1.3%
K04000001	England and Wales	24783.2K	89.6%	4.2%	1.3%	4.8%

Source: 2021 Census, Office for National Statistics, figures may not sum due to rounding.

Of Cumbria's 229,000 households, the greatest proportion reported that all adults in the household had English as a main language (97.5%); much higher than the national average (89.6%). Inversely, Cumbria had a much lower proportion of households with no people in the household with English as a main language (Cumbria 1.3% vs. national 4.8%). Of all LTLAs nationally, Copeland had the 3rd smallest proportion of households with 'no adults but at least one person aged 3 to 15 with English as a main language'.

Figure 9: Households at Census Day 2021: By Household Language: No people in the household had English as a main language: Output Areas:



Reproduced from the Ordnance Survey mapping with the permission of the Controller of Her Majesty's Stationery Office. © Crown Copyright and Database Right 2022. Unauthorised reproduction in any form is prohibited. Ordnance Survey is a service mark of Ordnance Survey. Ordnance Survey is a service mark of Ordnance Survey.

Figure 10: Proportional Change: 2011-2021: By Household Language:

Household Language: 2011-2021: % Change

Area Code	Area Name	All adults in household have English as a main language	At least one but not all adults in household have English as a main language	No adults in household but at least one person aged 3 to 15 has English as a main language	No people in household have English as a main language
E07000026	Allerdale	3.7	0.7	146.9	18.7
E07000027	Barrow-in-Furness	-0.3	0.9	124.2	40.1
E07000028	Carlisle	3.5	18.4	254.5	47.3
E07000029	Copeland	0.8	5.9	18.5	2.4
E07000030	Eden	6.0	33.2	221.7	55.1
E07000031	South Lakeland	1.7	16.9	291.7	31.8
E10000006	Cumbria	2.5	13.4	191.7	37.5
K04000001	England and Wales	4.2	19.4	81.6	19.8

Source: 2021 Census, Office for National Statistics, figures may not sum due to rounding.

The largest proportional change in Cumbria was in the number of households with 'no adults but at least one person aged 3 to 15 with English as a main language' (+191.7% vs. national +81.6%). Cumbria also experienced a substantial increase in numbers of households with 'no people in the household with English as a main language' (+37.5% vs. national +19.8%).

Religion

Figure 11: Usual Resident Population at Census Day 2021: By Religion:

Religion: 2021: %

Area Code	Area Name	All Persons No. Persons	Christian %	Buddhist %	Hindu %	Jewish %	Muslim %	Sikh %	Other religion %	No religion %	Religion not stated %	Religion other than Christian %
E07000026	Allerdale	96.2K	59.8%	0.2%	0.1%	0.0%	0.2%	0.0%	0.3%	33.3%	5.9%	0.9%
E07000027	Barrow-in-Furness	67.4K	53.1%	0.2%	0.2%	0.0%	0.5%	0.0%	0.4%	39.7%	5.8%	1.3%
E07000028	Carlisle	110.0K	53.3%	0.3%	0.3%	0.0%	0.8%	0.0%	0.4%	39.1%	5.6%	1.9%
E07000029	Copeland	67.1K	65.1%	0.2%	0.1%	0.0%	0.4%	0.0%	0.4%	28.6%	5.2%	1.1%
E07000030	Eden	54.7K	58.4%	0.3%	0.1%	0.1%	0.4%	0.0%	0.4%	34.4%	6.0%	1.2%
E07000031	South Lakeland	104.5K	54.9%	0.5%	0.1%	0.1%	0.3%	0.0%	0.4%	37.4%	6.3%	1.4%
E10000006	Cumbria	499.8K	57.0%	0.3%	0.1%	0.0%	0.4%	0.0%	0.4%	35.8%	5.8%	1.3%
K04000001	England and Wales	59597.5K	46.2%	0.5%	1.7%	0.5%	6.5%	0.9%	0.6%	37.2%	6.0%	10.6%

Source: 2021 Census, Office for National Statistics, figures may not sum due to rounding.

Of Cumbria's 499,800 usual residents, the greatest proportion described themselves as Christian (57%); higher than the national average (46.2%). Inversely, Cumbria had a much lower proportion of residents who described themselves as having a religion other than Christian (Cumbria 1.3% vs. national 10.6%). The 2nd greatest proportion of Cumbria's residents described themselves as having 'no religion' (35.8%); similar to the national average (37.2%).

Of all LTLAs nationally, Copeland had the 3rd largest proportion of residents who described themselves as Christian, while Allerdale had the 2nd smallest proportion of residents who described themselves as having a religion other than Christian.

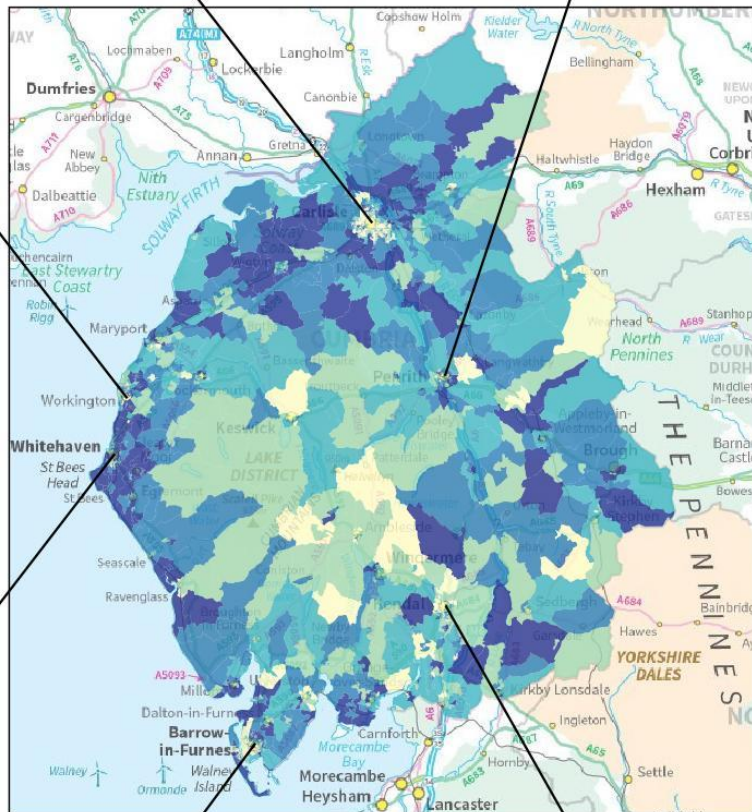
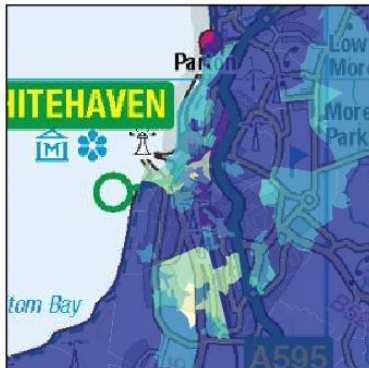
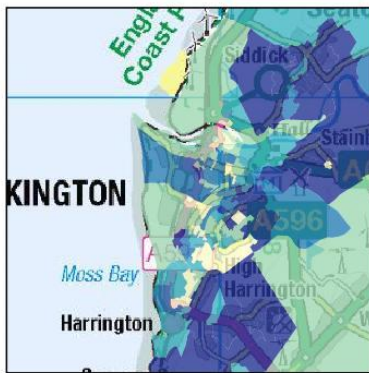
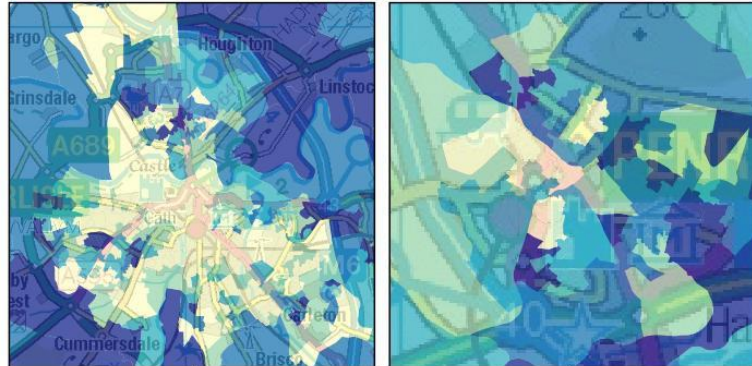
Figure 12: Usual Residents at Census Day 2021: By Religion: Christian: Output Areas



County Council

Cumbria Output Areas

Usual Residents:
Religion: Christian.
Source: Office for National
Statistics - Census 2021.



% Usual Residents

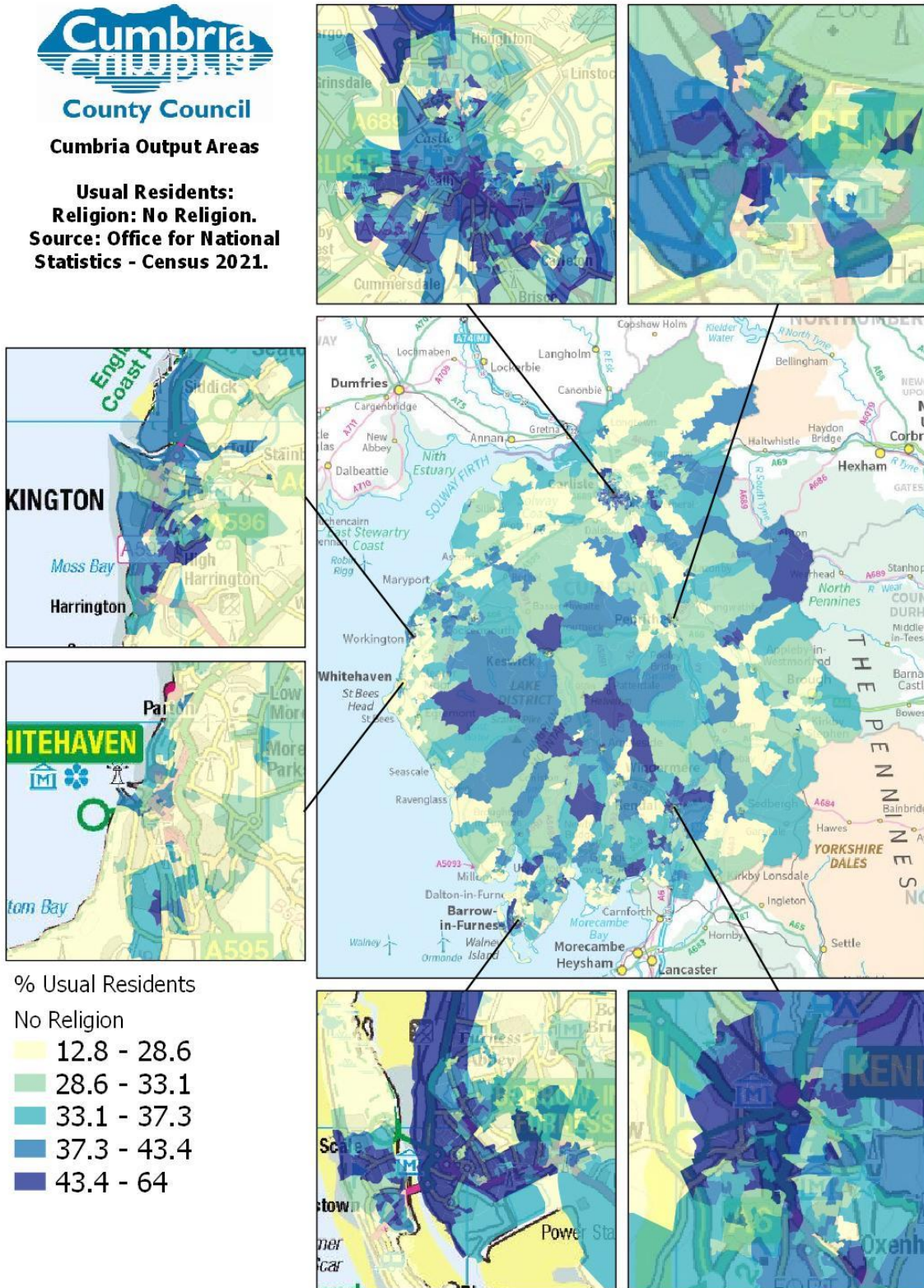
Religion: Christian

- 19.8 - 49
- 49 - 55.3
- 55.3 - 59.8
- 59.8 - 64.7
- 64.7 - 82.9



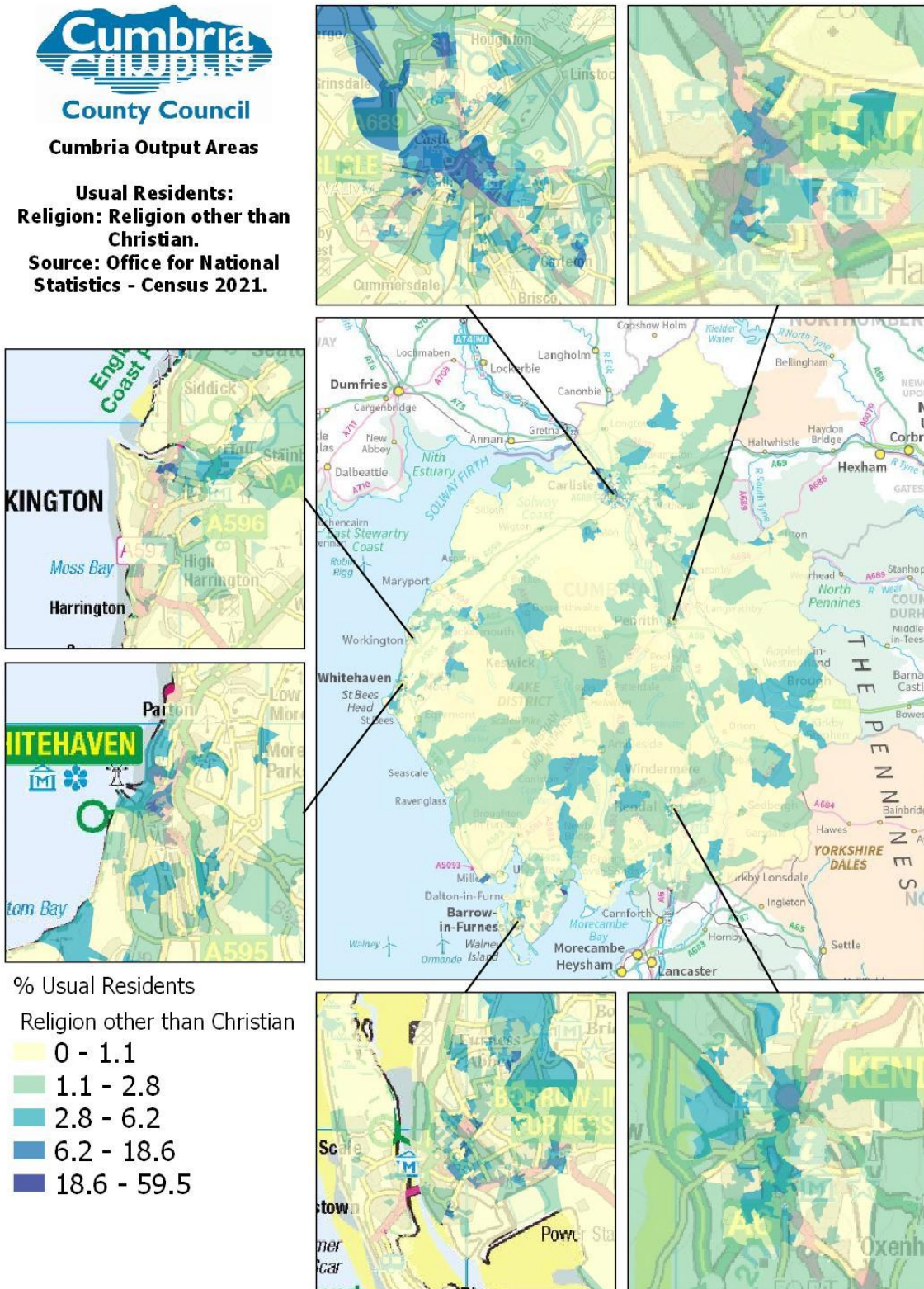
Reproduced from the Ordnance Survey mapping with the permission of the Controller of Her Majesty's Stationery Office © Crown Copyright and Database Right 2022. Unauthorised reproduction infringes Crown Copyright and may lead to prosecution or Civil Proceedings. Ordnance Survey L A Licence 100019596 Cumbria County Council

Figure 13: Usual Residents at Census Day 2021: By Religion: No Religion: Output Areas:



Reproduced from the Ordnance Survey mapping with the permission of the Controller of Her Majesty's Stationery Office © Crown Copyright and Database Right 2022. Unauthorised reproduction infringes Crown Copyright and may lead to prosecution or Civil Proceedings. Ordnance Survey L A Licence 100019596 Cumbria County Council

Figure 14: Usual Residents at Census Day 2021: By Religion: Religion other than Christian: Output Areas:



Reproduced from the Ordnance Survey mapping with the permission of the Controller of Her Majesty's Stationery Office © Crown Copyright and Database Right 2022. Unauthorised reproduction infringes Crown Copyright and may lead to prosecution or Civil Proceedings. Ordnance Survey L A Licence 100019596 Cumbria County Council

Figure 15: Proportional Change: 2011-2021: By Religion

Religion: 2011 - 2021: % Change

Area Code	Area Name	Christian	Buddhist	Hindu	Jewish	Muslim	Sikh	Other religion	No religion	Religion not stated	Religion other than Christian
E07000026	Allerdale	-20.9	18.6	76.9	89.5	20.3	144.4	30.7	92.3	-10.9	30.3
E07000027	Barrow-in-Furness	-26.7	10.0	16.8	26.7	87.2	271.4	47.9	75.6	-11.0	46.6
E07000028	Carlisle	-21.0	22.7	48.5	158.8	92.1	11.1	47.7	74.8	-14.9	58.8
E07000029	Copeland	-21.6	-0.7	-40.7	0.0	22.9	62.5	64.4	89.1	-15.5	18.7
E07000030	Eden	-14.0	12.3	-21.4	-3.2	76.5	0.0	56.4	72.9	-18.8	37.9
E07000031	South Lakeland	-18.8	18.1	40.0	-12.5	56.6	57.1	19.3	63.5	-17.9	22.7
E10000006	Cumbria	-20.7	15.6	25.8	16.7	63.6	65.6	39.8	76.4	-14.9	37.4
K04000001	England and Wales	-17.2	10.0	26.5	3.0	42.9	23.9	44.8	57.2	-11.0	34.5

Source: 2021 Census, Office for National Statistics, figures may not sum due to rounding.

The largest proportional change in Cumbria was in the number of residents who described themselves as having no religion (+76.4% vs. national +57.2%). However, Cumbria also experienced substantial proportional increases in residents who described themselves as Sikh (+65.6% vs. national +23.9%) and Muslim (+63.6% vs. national +42.9%). Of all LTLAs nationally, Copeland had the largest proportional decrease in residents who described themselves as Hindu.

Implications

As expected, the 2021 Census identified many changes over the last decade in relation to ethnicity, language and religion in Cumbria. The figures outlined within this briefing represent just a small proportion of the data that was collected by the 2021 Census. Cumbria Intelligence Observatory will coordinate relevant analysis of 2021 Census statistics for Cumbria. This analysis will be used to:

- Build a more detailed picture of Cumbria and its communities.
- Compare results with the profile of people who use council services to assess whether they are providing fair access to public services, taking steps where a group is experiencing inequalities or potential discrimination.
- Enable informed strategic planning.
- Inform planning and delivery of services including schools, health provision, transport and housing.
- Inform a wide range of statutory needs assessments.
- Support lobbying activities.
- Support third sector organizations in funding applications and advocacy.

Further Information

The ONS plan to release all the main 2021 Census results within two years of Census Day. Please check the Cumbria Intelligence Observatory website over the coming months for further 2021 Census briefings and statistics as results are published: <http://www.cumbriaobservatory.org.uk/>

For more information: Email: info@cumbriaobservatory.org.uk