

Summary

New 2007 regional and 2006 sub-regional Gross Value Added (GVA) data were released today by the Office for National Statistics. The release includes the reinstatement of regional GVA by industry. The latest release includes revisions to earlier years.

Regional GVA – 2007

- Total GVA in the North West was £119.7bn, up from £113.0bn in 2006. The growth rate of 5.9% – at current prices – was up from 5.2% in 2006, and compared with 6.0% for the UK as a whole.
- GVA per head in the North West was £17,400, up from £16,000 in 2006. The growth rate of 5.8% was up from 5.0% in 2006 and compared with 5.3% for the UK.
- Indexed GVA per head (with UK=100) was 87 in the North West. This has been the same since 2002.

Comparisons with other regions

- In 2007, London had by far the highest total GVA and GVA per head, followed by the South East. In terms of total GVA the NW ranked 3rd, and in GVA per head it was 6th – an increase of one place - among English regions and 7th among UK regions/nations.
- The NW growth rate of 5.9% for total GVA between 2006 and 2007 was the third highest of the English regions. The growth rate of 5.8% for GVA per head was the second highest of the English regions. Only London (6.5%) had a higher per head growth rate between 2006 and 2007.

Sub-regional GVA – 2006

- Among the five 'NUTS2' sub-regions, Greater Manchester had the largest GVA in 2006 (£44.1bn, almost two fifths of the NW total) and Cumbria the smallest (£7.0bn).
- Between 2005 and 2006 Cheshire (6.5%) was the only 'NUTS3' area that had growth rate above that of the UK (5.3%) for Total GVA.
- GVA per head was highest in Cheshire (10% above the UK average) and lowest in Merseyside (28% below). GVA per head can be distorted by the effects of commuting, especially for smaller areas (see Sources and definitions).

Industry GVA

- In 2006, Real estate, renting and business activities (21%), and Manufacturing (18%) continued to dominate the North West economy at the 15 industry level. Industry GVA has been reinstated for 2006 and produced for each year back to 1995 (see Sources and definitions).

Table 1: Regional GVA, 2007 ¹

	Total GVA ² (£m)	Growth on 2006 (%)	GVA per Head (£m)	Growth on 2006 (%)	Per head index (UK =100)
North East	40,231	5.2	15,688	4.8	79
North West	119,667	5.9	17,433	5.8	87
Yorkshire & Humber	87,390	5.5	16,880	4.8	85
East Midlands	77,864	5.9	17,698	5.0	89
West Midlands	92,356	5.6	17,161	5.3	86
East of England	116,186	5.8	20,524	4.8	103
London	229,619	7.1	30,385	6.5	152
South East	187,971	6.1	22,624	5.2	113
South West	94,215	5.8	18,195	4.7	91
England	1,045,501	6.1	20,463	5.4	103
Wales	44,333	5.1	14,877	4.6	75
Scotland	98,521	5.5	19,152	5.0	96
Northern Ireland	28,445	6.2	16,170	5.1	81
UK ³	1,216,799	6.0	19,956	5.3	100

Notes:

1 Headline GVA at current basic prices on residence basis. 2006 and 2007 estimates are provisional.

2 Components may not sum to totals due to rounding.

3 Excluding statistical discrepancy and Extra-regio (off-shore contribution to GVA that cannot be assigned to any region).

Figure 1: Regional GVA, 2007

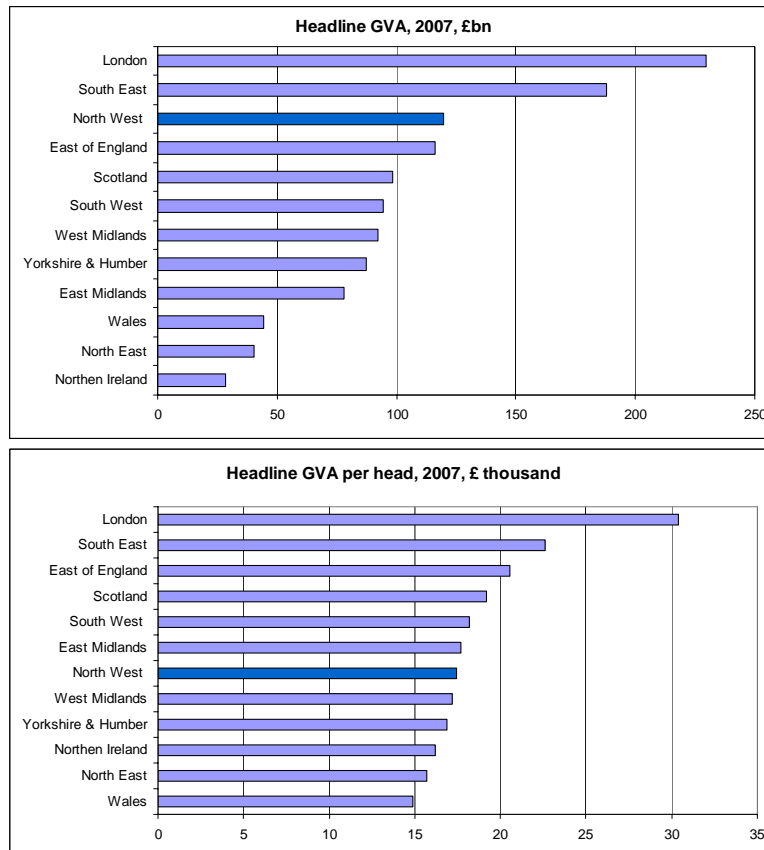
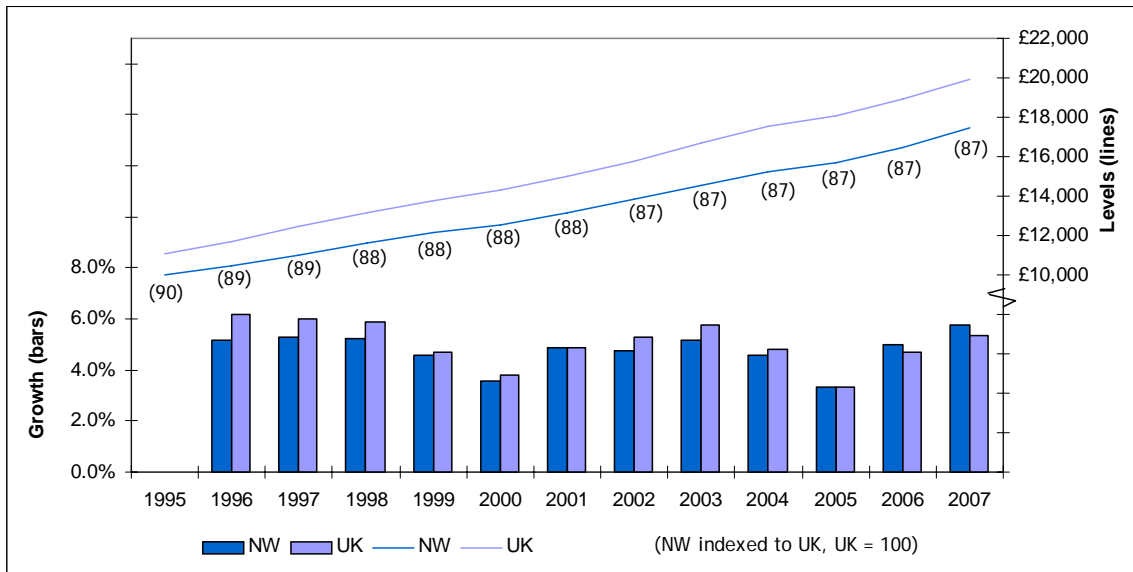


Figure 2: GVA per head: levels and growth, 1995-2007



Regional & sub-regional GVA

Table 2: Sub-regional GVA¹ (£ million) in the North West, selected years

NUTS² 2	Cumbria	Cheshire	Greater Manchester	Lancashire	Merseyside								
1996	5,111	12,824	27,425	14,370	11,624								
2001	5,447	16,303	35,205	17,562	14,815								
2002	5,689	17,016	36,868	18,383	15,670								
2003	6,035	17,880	39,033	19,360	16,495								
2004	6,422	18,791	40,987	20,311	17,119								
2005	6,636	19,558	42,619	20,917	17,646								
2006	6,968	20,820	44,782	21,956	18,429								
NUTS² 3	West	East	Halton & Warrington	Cheshire	South	North	Blackburn with Darwen	Blackpool	Lancs CC	East	Liverpool	Sefton	Wirral
1996	2,369	2,741	4,064	8,760	17,036	10,389	1,482	1,287	11,601	2,378	4,668	2,278	2,300
2001	2,444	3,003	5,417	10,885	22,711	12,494	1,688	1,525	14,349	3,249	5,858	2,819	2,888
2002	2,509	3,181	5,726	11,290	23,864	13,004	1,760	1,557	15,066	3,445	6,224	2,968	3,033
2003	2,618	3,416	6,051	11,829	25,312	13,722	1,845	1,591	15,924	3,594	6,627	3,092	3,183
2004	2,741	3,681	6,274	12,517	26,605	14,381	1,913	1,627	16,771	3,707	6,941	3,177	3,293
2005	2,830	3,806	6,481	13,077	27,740	14,878	1,956	1,670	17,291	3,809	7,247	3,233	3,357
2006	2,954	4,014	6,834	13,986	29,252	15,530	2,023	1,738	18,195	3,977	7,626	3,341	3,485

Notes:

- 1 Headline GVA at current basic prices on a workplace basis. 2006 estimates are provisional.
- 2 Nomenclature of Units for Territorial Statistics (Eurostat classification).

Table 3: Sub-regional GVA¹ per head (£) in the North West, selected year

NUTS² 2	Cumbria		Cheshire		Greater Manchester		Lancashire				Merseyside			
1996	10,499		13,119		10,834		10,176				8,292			
2001	11,167		16,567		13,992		12,392				10,831			
2002	11,646		17,273		14,641		12,928				11,485			
2003	12,288		18,076		15,442		13,531				12,115			
2004	12,988		18,924		16,178		14,109				12,595			
2005	13,389		19,619		16,757		14,460				13,000			
2006	14,044		20,822		17,535		15,145				13,615			
NUTS² 3	West	East	Halton & Warrington	Cheshire	South	North	Blackburn with Darwen	Blackpool	Lancs CC	East	Liverpool	Sefton	Wirral	
1996	9,974	11,000	13,109	13,124	12,480	8,908	10,676	8,723	10,304	7,203	10,117	7,922	7,127	
2001	10,412	11,868	17,489	16,144	16,851	10,694	12,189	10,722	12,625	9,905	13,259	9,966	9,169	
2002	10,699	12,521	18,483	16,718	17,700	11,116	12,635	10,942	13,212	10,511	14,126	10,541	9,645	
2003	11,134	13,348	19,486	17,431	18,686	11,696	13,178	11,151	13,869	10,969	15,101	11,000	10,136	
2004	11,604	14,254	20,157	18,362	19,572	12,248	13,583	11,385	14,510	11,305	15,877	11,325	10,505	
2005	11,979	14,673	20,741	19,107	20,287	12,653	13,848	11,667	14,878	11,584	16,581	11,580	10,747	
2006	12,498	15,450	21,795	20,378	21,245	13,195	14,322	12,179	15,608	12,092	17,489	12,041	11,199	

Notes:

1 Headline GVA at current basic prices on a workplace basis. 2006 estimates are provisional.

2 Nomenclature of Units for Territorial Statistics (Eurostat classification).

Table 4: Sub-regional GVA per head¹ indices (UK² = 100) in the North West, selected years

NUTS³ 2	Cumbria		Cheshire		Grt Manchester		Lancashire				Merseyside			
1996	90		112		92		87				71			
2001	74		110		93		83				72			
2002	74		109		93		82				73			
2003	74		108		92		81				73			
2004	74		108		92		81				72			
2005	74		108		93		80				72			
2006	74		110		93		80				72			
NUTS³ 3	West	East	Halton & Warrington	Cheshire	South	North	Blackburn with Darwen	Blackpool	Lancs CC	East	Liverpool	Sefton	Wirral	
1996	85	94	112	112	106	76	91	74	88	61	86	68	61	
2001	69	79	117	108	112	71	81	71	84	66	88	66	61	
2002	68	79	117	106	112	70	80	69	84	67	89	67	61	
2003	67	80	117	104	112	70	79	67	83	66	90	66	61	
2004	66	81	115	105	112	70	78	65	83	65	91	65	60	
2005	66	81	115	106	112	70	77	64	82	64	92	64	59	
2006	66	82	115	108	112	70	76	64	82	64	92	64	59	

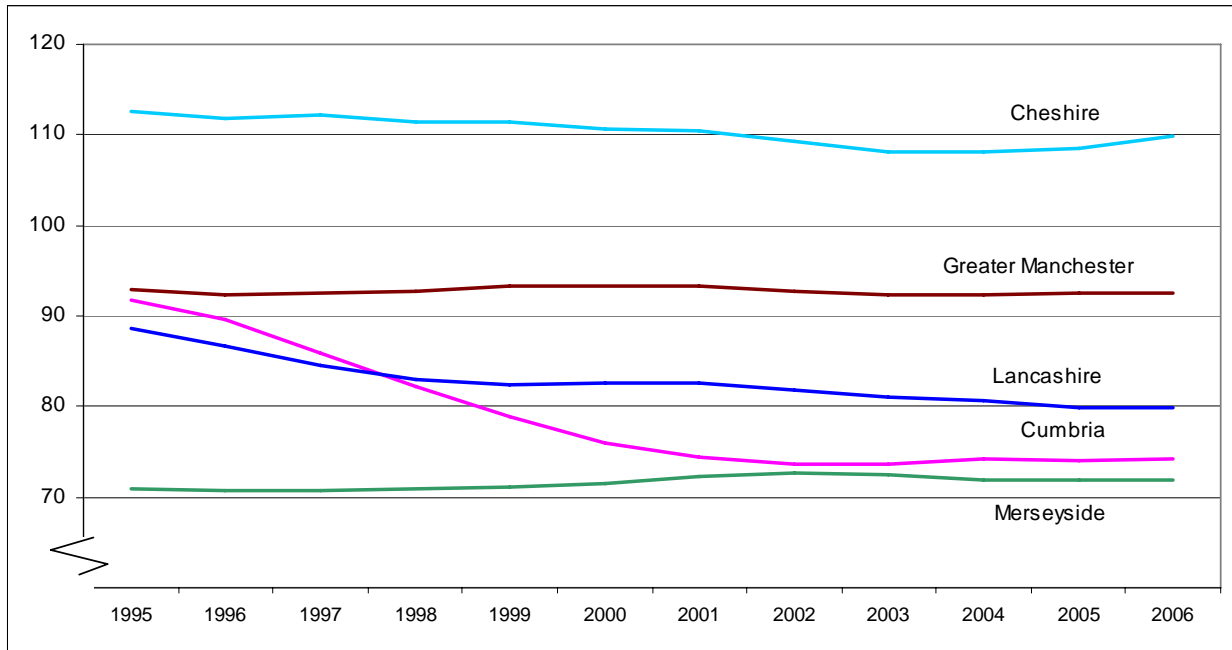
Notes:

1 Headline GVA at current basic prices on a workplace basis. 2006 estimates are provisional.

2 Excluding statistical discrepancy and Extra-regio (off-shore contribution to GVA that cannot be assigned to any region).

3 Nomenclature of Units for Territorial Statistics (Eurostat classification).

Figure 3: GVA per head in NW (NUTS 2) sub-regions, Indices UK=100, 1995 to 2006



Industry GVA

Industry estimates of GVA have been reinstated for this release. Data are available for the years 1989 to 2006 for 31 industries at NUTS 1; 17 industries at NUTS 2; and 6 industries at NUTS 3. The industry groupings are based on the Standard Industrial Classification (2003) and are comparable with those used in the UK National Accounts (Blue Book) Chapter 2.

Table 5: North West headline¹ GVA², by industry groups, select years, £million

Industry	1991	1996	2001	2002	2003	2004	2005	2006
Agriculture, hunting & forestry	717	885	550	577	634	703	511	560
Fishing	9	10	8	9	10	9	8	8
Mining and quarrying	172	139	162	128	125	155	179	184
Manufacturing	16,019	18,846	19,157	18,857	18,601	19,075	19,275	20,290
Electricity, gas and water supply	1,573	1,660	1,599	1,501	1,401	1,355	1,359	1,556
Construction	3,312	3,610	5,023	5,411	5,939	6,449	6,942	7,580
Wholesale and retail trade (inc motor trade)	6,834	8,793	11,756	12,089	12,839	13,556	13,766	14,095
Hotels and restaurants	1,558	1,824	2,729	2,924	3,053	3,109	3,108	3,246
Transport, storage and communication	4,491	5,227	6,930	7,322	7,776	8,145	8,247	8,375
Financial intermediation	2,821	3,290	3,597	4,617	5,164	5,381	5,675	6,513
Real estate, renting and business activities	7,895	11,569	17,373	18,461	20,052	21,243	22,350	23,746
Public administration and defence ³	2,927	3,541	4,092	4,261	4,523	4,835	5,232	5,490
Education	3,089	4,131	5,794	6,068	6,337	6,650	7,076	7,372
Health and social work	3,582	5,141	6,662	7,145	7,749	8,105	8,515	8,863
Other services	1,886	2,688	3,902	4,257	4,602	4,861	5,133	5,077
Total	56,885	71,354	89,332	93,627	98,804	103,631	107,376	112,955

Notes:

1 Headline GVA at current basic prices. 2006 estimates are provisional.

2 Components may not sum to totals due to rounding.

3 Public administration, national defence and compulsory social security.

Table 6: Headline¹ GVA² in the NW sub regions (NUTS³2) by industry groups, 2006⁴

Industry						£million
	Cumbria	Cheshire	Greater Manchester	Lancashire	Merseyside	Total
Agriculture, hunting & forestry	144	148	34	207	27	560
Fishing	5	0	0	2	0	8
Mining and quarrying	59	79	17	24	5	184
Manufacturing	1,838	4,866	6,154	5,132	2,301	20,290
Electricity, gas and water supply	159	446	278	527	147	1,556
Construction	507	1,269	3,105	1,525	1,173	7,580
Wholesale and retail trade (including motor trade)	888	2,542	5,738	2,731	2,196	14,095
Hotels and restaurants	386	504	1,091	735	530	3,246
Transport, storage and communication	466	1,417	3,964	1,169	1,359	8,375
Financial intermediation	120	1,253	3,097	659	1,384	6,513
Real estate, renting and business activities	829	4,903	11,163	3,561	3,289	23,746
Public administration and defence ⁵	300	557	1,959	1,235	1,439	5,490
Education	389	959	2,874	1,582	1,568	7,372
Health and social work	560	1,208	3,204	1,903	1,987	8,863
Other services	318	669	2,103	964	1,023	5,077
Total	6,968	20,820	44,782	21,956	18,429	112,955

Notes:

1 Headline GVA at current basic prices.

2 Components may not sum to totals due to rounding.

3 Nomenclature of Units for Territorial Statistics (Eurostat classification).

4 2006 estimates are provisional.

5 Public administration, national defence and compulsory social security.

Table 7: Headline¹ GVA² in the NW sub regions (NUTS³) by industry groups, 2006⁴

NUTS ⁴ 3	Agriculture, forestry and fishing	Production	Construction	Distribution, transport and communication	Business services and finance	Public administration, education, health and other services	£million
							Total
West Cumbria	50	1,092	192	574	395	651	2,954
East Cumbria	99	964	316	1,166	554	916	4,014
Halton and Warrington	12	1,283	486	1,722	2,245	1,085	6,834
Cheshire CC	136	4,107	783	2,741	3,911	2,308	13,986
Greater Manchester Sth	16	3,446	1,629	6,781	10,907	6,474	29,252
Greater Manchester Nrth	19	3,003	1,476	4,012	3,353	3,666	15,530
Blackburn with Darwen	3	560	103	407	352	598	2,023
Blackpool	1	142	103	513	287	693	1,738
Lancashire CC	204	4,981	1,320	3,714	3,582	4,394	18,195
East Merseyside	10	919	378	961	710	999	3,977
Liverpool	4	613	313	1,623	2,385	2,688	7,626
Sefton	8	280	248	775	763	1,266	3,341
Wirral	6	641	234	726	815	1,063	3,485
Total	568	22,031	7,580	25,715	30,258	26,802	112,955

Notes:

1 Headline GVA at current basic prices.

2 Components may not sum to totals due to rounding.

3 Nomenclature of Units for Territorial Statistics (Eurostat classification).

4 2006 estimates are provisional.

Table 8: Contribution to NW Headline¹ regional GVA² by industry and NUTS³ area, 2006⁴

NUTS ⁴ area	Agriculture, forestry and fishing	Production	Construction	Distribution, transport and communication	Business services and finance	Public administration, education, health and other services	Percent
							Total
NUTS⁴ 2							
Cumbria	0.1	1.8	0.4	1.5	0.8	1.4	6.2
Cheshire	0.1	4.8	1.1	4.0	5.4	3.0	18.4
Greater Manchester	0.0	5.7	2.7	9.6	12.6	9.0	39.6
Lancashire	0.2	5.0	1.4	4.1	3.7	5.0	19.4
Merseyside	0.0	2.2	1.0	3.6	4.1	5.3	16.3
Total	0.5	19.5	6.7	22.8	26.8	23.7	100.0
NUTS⁴ 3							
West Cumbria	0.0	1.0	0.2	0.5	0.3	0.6	2.6
East Cumbria	0.1	0.9	0.3	1.0	0.5	0.8	3.6
Halton and Warrington	0.0	1.1	0.4	1.5	2.0	1.0	6.1
Cheshire CC	0.1	3.6	0.7	2.4	3.5	2.0	12.4
Greater Manchester Sth	0.0	3.1	1.4	6.0	9.7	5.7	25.9
Greater Manchester Nth	0.0	2.7	1.3	3.6	3.0	3.2	13.7
Blackburn with Darwen	0.0	0.5	0.1	0.4	0.3	0.5	1.8
Blackpool	0.0	0.1	0.1	0.5	0.3	0.6	1.5
Lancashire CC	0.2	4.4	1.2	3.3	3.2	3.9	16.1
East Merseyside	0.0	0.8	0.3	0.9	0.6	0.9	3.5
Liverpool	0.0	0.5	0.3	1.4	2.1	2.4	6.8
Sefton	0.0	0.2	0.2	0.7	0.7	1.1	3.0
Wirral	0.0	0.6	0.2	0.6	0.7	0.9	3.1
Total	0.5	19.5	6.7	22.8	26.8	23.7	100.0

Notes:

1 Headline GVA at current basic prices.

2 Components may not sum to totals due to rounding.

3 Nomenclature of Units for Territorial Statistics (Eurostat classification).

4 2006 estimates are provisional.

Table 9: Contribution to NW Headline¹ industry GVA², select industry and NUTS³ area, 2006⁴

NUTS ⁴ area	Agriculture, forestry and fishing	Production	Construction	Distribution, transport and communication	Business services and finance	Percent
						Public administration, education, health and other services
NUTS⁴ 2						
Cumbria	26.3	9.3	6.7	6.8	3.1	5.8
Cheshire	26.2	24.5	16.7	17.4	20.3	12.7
Greater Manchester	5.9	29.3	41.0	42.0	47.1	37.8
Lancashire	36.8	25.8	20.1	18.0	13.9	21.2
Merseyside	4.8	11.1	15.5	15.9	15.4	22.4
Total	100	100	100	100	100	100
NUTS⁴ 3						
West Cumbria	8.9	5.0	2.5	2.2	1.3	2.4
East Cumbria	17.4	4.4	4.2	4.5	1.8	3.4
Halton and Warrington	2.2	5.8	6.4	6.7	7.4	4.0
Cheshire CC	23.9	18.6	10.3	10.7	12.9	8.6
Greater Manchester Sth	2.7	15.6	21.5	26.4	36.0	24.2
Greater Manchester Nth	3.4	13.6	19.5	15.6	11.1	13.7
Blackburn with Darwen	0.6	2.5	1.4	1.6	1.2	2.2
Blackpool	0.1	0.6	1.4	2.0	0.9	2.6
Lancashire CC	36.0	22.6	17.4	14.4	11.8	16.4
East Merseyside	1.8	4.2	5.0	3.7	2.3	3.7
Liverpool	0.6	2.8	4.1	6.3	7.9	10.0
Sefton	1.4	1.3	3.3	3.0	2.5	4.7
Wirral	1.0	2.9	3.1	2.8	2.7	4.0
Total	100	100	100	100	100	100

Notes:

1 Headline GVA at current basic prices.

2 Components may not sum to totals due to rounding.

3 Nomenclature of Units for Territorial Statistics (Eurostat classification).

4 2006 estimates are provisional.

Note on revisions to previously published figures

The Regional and Sub regional GVA estimates have been revised back to 1989 in line with new methodology allocating FISIM introduced in the National Accounts for the 2008 Blue Book. The reinstatement of UK Supply & Use Table compilation and balancing for the years 2004 to 2006 using new IT systems and approaches has led to a reassessment of the UK levels of GVA with subsequent effects on the regional estimates.

For 2006, the GVA for the North West has been revised upwards from £111.3bn to £113.0bn, a revision of +£1.7bn or +1.5%. Estimated GVA per head in the North West is revised up from £16,234 to £16,482 (+1.5%).

The indexed GVA per head for the North West is revised down by an index point between 1996 and 2004: this is because the upward revisions to other regions were proportionately greater than for the North West. For 2005 and 2006 the indexed GVA per head remained the same (87). (For the UK as a whole the revisions to 2006 GVA and GVA per head were both +1.7%).

In overall terms the regions that have seen the largest upward revisions to their estimated GVA in 2006 are London (+£17.6bn), Scotland (+£2.3bn) and the North West (+£1.7bn). The regions with the largest downward revisions to their 2006 GVA are West Midlands (-£1.5bn), East Midlands (-£0.6bn) and the North East (-£0.5bn).

Table 10: Revisions to previously published GVA¹ for North West, 1996-2006

Year	Total GVA Released		Revision		GVA per head Released		Revision	
	Dec-07 (£m)	Dec-08 (£m)	(£m)	(%)	Dec-07 (£)	Dec-08 (£)	(£)	(%)
1996	70,713	71,354	641	0.9	10,384	10,478	94	0.9
1997	74,236	74,944	708	1.0	10,926	11,030	104	1.0
1998	78,226	78,860	634	0.8	11,517	11,610	93	0.8
1999	81,402	82,256	854	1.0	12,018	12,145	126	1.0
2000	84,308	85,196	888	1.1	12,445	12,576	131	1.1
2001	88,435	89,332	897	1.0	13,057	13,190	133	1.0
2002	92,639	93,627	988	1.1	13,656	13,813	157	1.1
2003	97,707	98,804	1,097	1.1	14,359	14,529	170	1.2
2004	103,035	103,631	596	0.6	15,092	15,196	104	0.7
2005	106,501	107,376	875	0.8	15,556	15,699	143	0.9
2006	111,252	112,955	1,703	1.5	16,234	16,482	249	1.5

Notes:

1 Headline GVA at current basic prices. 2006 estimates are provisional.

Sources and definitions

1 The latest regional Gross Value Added (GVA) data can be found on the ONS website via: <http://www.statistics.gov.uk/statbase/Product.asp?vlnk=14650>

This includes a 'First Release' highlighting the key data and definitions, and a full document giving detailed tables (which are also available as Excel files).

2 GVA represents the incomes generated by economic activity within the UK economy. GVA data presented in the Regional Accounts uses the income approach or GVA(I) and comprises:

- compensation of employees (wages and salaries, national insurance contributions, pension contributions, redundancy payments etc);
- Gross operating surplus (self-employment income, gross trading profits of partnerships and corporations, gross trading surplus of public corporations, rental income etc).

A full definition of GVA(I) can be found in the UK National Accounts (Blue Book).

3 Estimates are at current basic prices and do not allow for inflation or differences in regional price levels. The headline GVA series have been calculated using a 5-year moving average to remove some volatility. The unadjusted series are also provided on the ONS website.

4 Estimates of regional GVA by industry have been reinstated in this release, following their suspension in December 2007. Estimates are shown for the years 1995 to 2006 for: 31 industries at NUTS1; for 17 industries at NUTS2 and for 6 industries (previously three) at NUTS3.

There have been two significant revisions since the last publication of industry GVA in 2006; the incorporation of an improved method for estimating investment in own-account software, implemented in 2007 (see previous GVA briefing), and the introduction this year of the new treatment of financial intermediation services indirectly measured (FISIM). The new treatment includes the allocation of part of FISIM to final demand (mainly households) and the balance of FISIM across industries. This has the effect of reducing GVA for individual industries but increasing total GVA.

The most significant revisions are seen in regions with the largest concentration of the financial services industries (primarily London and, to a lesser extent, Scotland and the South East). London's GVA has been increased in each year by between 6 and 9 per cent, although this only has a limited impact on year-on-year percentage increases. The smallest effects are seen in the East Midlands and Wales.

For a full explanation of the new methodology, see Meader, R; Tily, G (2008); Overview of National Accounts and Balance of Payments: Blue Book and Pink Book 2008, Economic and Labour Market Review, Vol.2 No.10, October 2008.

<http://www.statistics.gov.uk/cci/article.asp?ID=2055>

In addition, the years 2004 to 2006 have been balanced through UK Supply & Use Tables using new IT systems and processes. As a result of the implementation of these changes, the estimates published in 2006 cannot be compared directly to those contained in the current release.

5 The Nomenclature of Units for Territorial Statistics (NUTS) provides a single uniform breakdown for the production of regional statistics for the European Union. There are three levels of NUTS in the UK:

- NUTS1: 12 areas – Nine Government Office Regions in England, and Wales, Scotland, Northern Ireland.
- NUTS2: 37 areas – mainly groups of counties and unitary authorities; can be referred to as sub regions (please note that in some cases these do not correspond exactly to the sub regions in the Regional Economic Strategy).
- NUTS3: 133 areas – principally individual counties and unitary authorities; also known as local areas.

6 Extra Regio is offshore economic activity and the contribution of UK embassies abroad and UK forces stationed overseas, which cannot be allocated to specific regions.

7 When making comparisons between regions, especially at lower geographical levels, GVA per head can be distorted by the effects of demographic differences and commuting. The numerator, GVA, reflects economic activity on a workplace basis, and the denominator, population, is on a residence basis. For example, GVA per head for the Wirral is low partly because many residents commute to Liverpool and that is where their economic activity is recorded. For these reasons, the preferred measure of regional and sub regional productivity is GVA per job or per hour worked. For more information, see Dey-Chowdhury, S; Penny, D; Walker, M; Wosnitza, B (2008); Regional economic indicators, Economic and Labour Market Review, Vol.2 No.1, February 2008.

<http://www.statistics.gov.uk/CCI/article.asp?ID=1945>

For further guidance on the uses of regional GVA please see the ONS Productivity Handbook: <http://www.statistics.gov.uk/about/data/guides/productivity/ch11.asp>

8 National Statistics are produced to high professional standards set out in the National Statistics Code of Practice. They undergo regular quality assurance reviews to ensure that they meet customer needs. They are produced free from any political interference.

Contacts

This briefing note has been produced by the ONS NW regional team:

Gary Wainman
Regional Statistician
Tel: 01925 400310
Mobile: 07788 436441
E-mail: Gary.Wainman@ons.gsi.gov.uk

Rachel Young
Regional Analyst
Tel: 01925 400252
Mobile: 07788 403968
E-mail: Rachel.Young@ons.gsi.gov.uk

Website: <http://www.ons.gov.uk/about/our-organisation/regional-statisticians/index.html>