

The December 2011 unemployment and vacancy figures were released by the Office for National Statistics on 18<sup>th</sup> January. The JSA Claimant Count was taken on 8<sup>th</sup> December 2011 and the vacancy count was for the month to 2<sup>nd</sup> December 2011.

### **The JSA Claimant Count & Rate (not seasonally adjusted)**

The JSA claimant *count* in Cumbria rose by 95 between Nov and Dec 2011 to 8,823. This non-seasonally adjusted figure also rose both regionally and nationally (see “other measures of joblessness” for the seasonally adjusted national figure). The claimant count rose in Barrow (25), Copeland (27), Eden (27) and South Lakeland (69) but fell in Allerdale (-20) and Copeland (-33). Between the same two months last year, the count in Cumbria rose by 132 people. The JSA claimant *rate* in Cumbria in Dec 2011 was unchanged at 2.9%. The rate was also unchanged nationally (3.9%) and regionally (4.4%).

Compared to a year ago, the JSA claimant count in Cumbria is 1,206 higher, a rise of 15.8% over the year. It is also higher nationally than a year ago but by a smaller margin, 10.1%. The claimant *rate* in Cumbria is up by 0.4 compared to a year ago, the national rate is also up by 0.4 compared to a year ago.

A third of all claimants, 2,955, were young people aged 16-24, a countywide rise of 15 from last month. Overall, 5.9% of all people in this age group are claiming JSA, lower than the national average of 6.3% but more than double the rate for the population as a whole in Cumbria. JSA Claimant rates for young people in Allerdale (7.2%), Barrow (8.8%) and Copeland (9.0%) are higher than nationally.

### **Other Measures of Joblessness**

*These figures are often quoted by the national press but are not available for local areas. They are provided here for information but should not directly be compared with those above as the methodology used to compile them is different.*

The jobless total for the UK (claimants and non claimants looking for work) rose by 118,000 over the quarter ending Nov 2011 to 2.68 million, the highest it's been since 1994. The jobless rate rose by 0.3 over the quarter to 8.4%. Similar figures using the wider definition of joblessness are not available at local level.

The seasonally adjusted claimant count for the UK was 1,597,000 in Dec 2011, up by 1,200 over the previous month. Comparable seasonally adjusted figures are not available at local level.

### **Notified Vacancies**

The number of new vacancies notified to JobCentre Plus in Cumbria in the month to 2<sup>nd</sup> December 2011 was 1,915 a fall of 440 compared to the number notified in October but 9 more than were notified in the same month last year.

### **JSA Claimant to Vacancy Ratio**

The ratio of claimants to live unfilled vacancies in Cumbria was 7.30 in Dec 2011 (GB 5.61). The ratio was especially high in Copeland (25.89) and in Barrow (16.71). (Note: the ratio is a snapshot on a given day and is particularly sensitive to variations in unfilled vacancies which can vary significantly at local level.)

### RESIDENCE-BASED CLAIMANT COUNTS & RATES – Dec 2011

Table 1

National, County, Districts, Travel to Work Areas & Parliamentary Constituencies										
	Male		Female		All Persons		All Persons			
	No	Rate	No	Rate	No	Rate	Monthly Change		Annual Change	
	No	Rate	No	Rate	No	Rate	No	Rate	No	Rate
Cumbria	6,127	4.0	2,696	1.7	8,823	2.9	95	0.0	1,206	0.4
North West	135,482	6.0	60,751	2.7	196,233	4.4	676	0.0	23,227	0.5
United Kingdom	1,056,607	5.2	512,242	2.5	1,568,849	3.9	10,093	0.0	143,657	0.4
Great Britain	1,014,340	5.2	495,396	2.5	1,509,736	3.9	10,353	0.0	141,426	0.4
<b><i>District</i></b>										
Allerdale	1,345	4.6	582	2.0	1,927	3.3	-20	0.0	219	0.4
Barrow in Furness	1,318	5.9	587	2.6	1,905	4.3	25	0.1	442	1.0
Carlisle	1,380	4.1	621	1.8	2,001	3.0	-33	0.0	238	0.4
Copeland	1,187	5.2	470	2.2	1,657	3.7	27	0.1	124	0.3
Eden	275	1.7	141	0.9	416	1.3	27	0.1	34	0.1
South Lakeland	622	2.0	295	0.9	917	1.5	69	0.1	149	0.2
<b><i>Travel to Work Area</i></b>										
Barrow in Furness	1,499	5.2	685	2.4	2,184	3.8	30	0.1	491	0.8
Carlisle	1,649	3.9	758	1.8	2,407	2.8	-19	0.0	294	0.3
Kendal	441	1.7	197	0.8	638	1.2	64	0.1	100	0.2
Penrith & Appleby	254	1.7	124	0.8	378	1.3	30	0.1	34	0.1
Whitehaven	1,126	5.0	437	2.0	1,563	3.6	25	0.1	110	0.3
Workington & Keswick	1,255	5.0	537	2.1	1,792	3.6	-21	0.0	189	0.4
Lancaster & Morecambe	2,001	4.2	888	1.9	2,889	3.0	7	0.0	413	0.4
<b><i>Parliamentary Constituency</i></b>										
Barrow & Furness	1,499	5.3	685	2.5	2,184	3.9	30	0.1	491	0.9
Carlisle	1,198	4.5	547	2.1	1,745	3.3	-43	-0.1	198	0.4
Copeland	1,234	4.8	505	2.1	1,739	3.5	35	0.1	126	0.3
Penrith & The Border	530	2.1	252	1.0	782	1.6	37	0.1	104	0.2
Westmorland & Lonsdale	441	1.8	197	0.8	638	1.3	64	0.1	100	0.2
Workington	1,225	5.2	510	2.2	1,735	3.7	-28	-0.1	187	0.4

NB: Rates are of the resident working age population

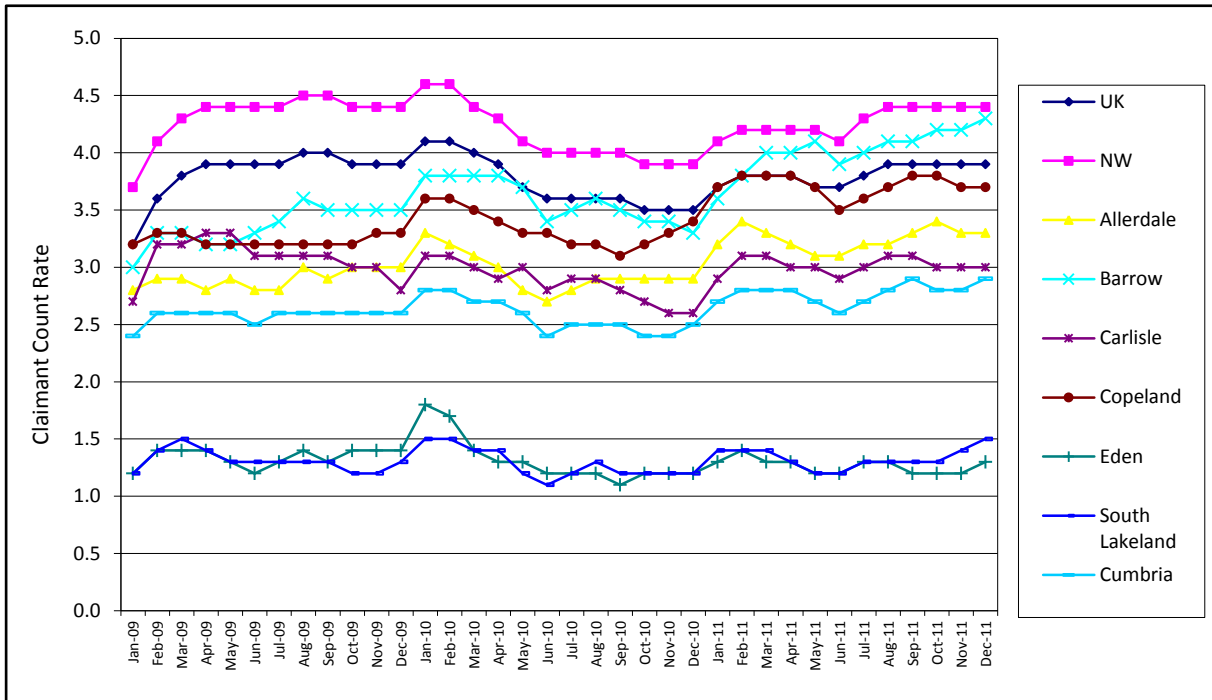
Note 1: From the May 2010 Briefing onwards, Parliamentary Constituencies are the 2010 boundaries.

Note 2: Please note that the definition of working age is now 16-65 for both males and females.

# Labour Market Briefing January 2012

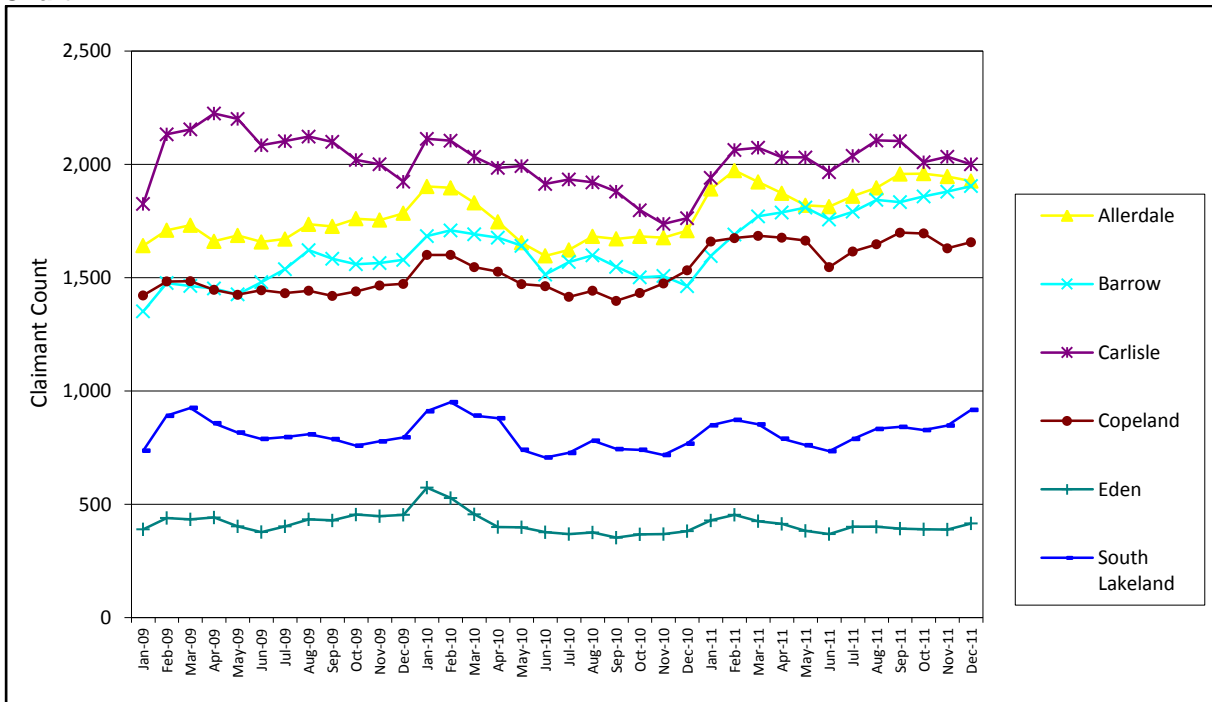
## JSA CLAIMANT RATES – 3 Yr Trend

Chart 1



## JSA CLAIMANT COUNTS – 3 Yr Trend

Chart 2



### LONG TERM JSA CLAIMANTS – Dec 2011

Table 2

	Claiming Over 6 Months				Claiming Over a Year			
	No	Rate	Change		No	Rate	Change	
			Monthly	Annual			Monthly	Annual
Cumbria	3,155	1.0	90	1,235	1,205	0.4	75	400
North West	76,705	1.7	1,435	23,510	35,510	0.8	1,865	8,405
United Kingdom	635,865	1.6	11,410	174,950	293,805	0.7	15,205	58,055
Allerdale	795	1.4	35	310	320	0.5	15	105
Barrow-in-Furness	710	1.6	35	325	235	0.5	20	80
Carlisle	630	0.9	0	185	245	0.4	0	65
Copeland	690	1.6	10	295	290	0.7	35	130
Eden	115	0.4	5	45	40	0.1	5	10
South Lakeland	215	0.3	5	75	75	0.1	5	15

Note: Rates are of the Working Age Population.

### YOUNG JSA CLAIMANTS (aged 16-24) – Dec 2011

Table 3

	Male		Female		All young people		All young people			
	No	Rate	No	Rate	No	Rate	Monthly Change		Annual Change	
							No	Rate	No	Rate
Cumbria	2,100	8.0	855	3.6	2,955	5.9	15	0.5	595	25.2
North West	42,550	9.5	19,700	4.6	62,250	7.1	-855	-1.4	10,670	20.7
United Kingdom	316,405	8.2	154,115	4.2	470,520	6.3	-3,725	-0.8	67,120	16.6
Allerdale	465	9.8	180	4.3	645	7.2	-40	-5.8	150	30.3
Barrow	495	11.7	220	5.7	715	8.8	-10	-1.4	205	40.2
Carlisle	410	6.7	190	3.1	595	4.9	15	2.6	65	12.3
Copeland	480	12.6	155	4.7	635	9.0	25	4.1	120	23.3
Eden	90	3.6	40	1.7	125	2.7	10	8.7	10	8.7
South Lakeland	165	3.3	75	1.7	240	2.5	15	6.7	40	20.0
Barrow-in-Furness TTWA	560	n/a	250	n/a	805	n/a	-15	0.9	230	40.0
Carlisle TTWA	500	n/a	225	n/a	725	n/a	20	4.2	95	15.1
Kendal TTWA	100	n/a	45	n/a	145	n/a	15	5.3	10	7.4
Penrith & Appleby TTWA	85	n/a	35	n/a	115	n/a	5	13.3	5	4.5
Whitehaven TTWA	450	n/a	140	n/a	590	n/a	20	8.4	110	22.9
Workington & Keswick TTWA	435	n/a	180	n/a	615	n/a	-40	-6.5	135	28.1

Note: Rates are of the population aged 16-24. Rates are not available for Travel to Work Areas

### LONG TERM YOUNG JSA CLAIMANTS (aged 16-24) – Dec 2011

Table 4

	YPs Claiming Over 6 Months				YPs Claiming Over a Year			
	No	Rate	Change		No	Rate	Change	
			Monthly	Annual			Monthly	Annual
Cumbria	710	1.4	55	520	85	0.2	35	75
North West	16,250	1.9	690	9,095	4,330	0.5	490	1,980
United Kingdom	129,350	1.7	4,130	67,465	37,805	0.5	3,840	17,275
Allerdale	175	2.0	20	135	20	0.2	10	20
Barrow-in-Furness	195	2.4	10	145	20	0.3	5	20
Carlisle	105	0.9	5	65	10	0.1	0	10
Copeland	170	2.4	5	125	25	0.3	15	20
Eden	25	0.5	5	20	5	0.1	5	5
South Lakeland	35	0.4	5	20	5	0.0	5	0

Note: Rates are of the population aged 16-24.

### JSA CLAIMANT USUAL AND SOUGHT OCCUPATION – Dec 2011

Table 5

OCCUPATION	Usual Occupation			Sought Occupation		
	Male	Female	Total	Male	Female	Total
Occupation unknown	60	70	125	60	70	125
Managers and Senior Officials	170	70	240	165	70	240
Professional Occupations	165	80	245	160	75	235
Associate Professional and Technical Occupations	265	85	345	270	80	350
Administrative and Secretarial Occupations	325	400	725	335	405	735
Skilled Trades Occupations	1,010	40	1,045	1,000	35	1,035
Personal Service Occupations	135	420	550	145	420	565
Sales and Customer Service occupations	895	940	1,835	895	940	1,835
Process, Plant and Machine Operatives	900	65	970	895	65	960
Elementary Occupations	2,190	520	2,705	2,190	525	2,715

Note: This dataset records the usual & sought occupation given by the claimant when registering for Job Seekers' Allowance. Values are rounded to the nearest 5 and therefore may not sum.

### JSA CLAIMANT FLOWS – Dec 2011

Table 6

DISTRICT/TTWA	Male		Female		All Persons	
	Off Flow	On Flow	Off Flow	On Flow	Off Flow	On Flow
Cumbria	1,121	1,305	605	543	1,726	1,848
Allerdale	238	238	125	107	363	346
Barrow in Furness	206	247	103	96	309	343
Carlisle	339	340	161	134	500	474
Copeland	153	216	100	72	252	287
Eden	54	75	41	47	95	121
South Lakeland	131	190	75	87	206	276
Barrow in Furness TTWA	243	282	122	123	365	405
Carlisle TTWA	398	416	197	176	595	592
Kendal TTWA	94	155	55	60	150	214
Penrith & Appleby TTWA	48	74	38	42	86	116
Whitehaven TTWA	144	206	100	69	244	275
Workington & Keswick TTWA	216	208	99	87	314	295
Lancaster & Morecambe TTWA	398	424	172	171	570	595

Note: This dataset counts those who ended or started a claim during the previous month.

### JSA CLAIMANT DESTINATIONS – Dec 2011

Table 7a

Reason for Leaving the Register - Number									
	Allerdale	Barrow	Carlisle	Copeland	Eden	South Lakeland	Cumbria	North West	United Kingdom
Found work	165	130	220	130	40	100	790	16,495	122,495
Increased work to 16+ hours/week	0	0	0	0	0	0	0	145	1,870
Gone abroad	5	10	10	5	5	10	40	885	7,420
Claimed Income Support	15	5	0	0	0	0	20	430	3,455
Claimed Incapacity Benefit	0	0	0	0	0	0	10	220	1,765
Claimed another benefit	5	5	10	5	0	5	25	475	3,310
Gone to full-time education	0	0	5	0	0	0	5	145	1,310
Gone onto approved training	0	0	0	0	0	0	0	10	105
Transfer to Govt-supported training	0	0	0	0	0	0	5	115	2,830
Retirement age reached	0	0	0	0	0	0	0	15	120
Automatic credits payable	0	0	0	0	0	0	0	0	10
Claimed back-to-work bonus	0	0	0	0	0	0	0	0	0
Gone to prison	5	5	5	0	0	5	25	320	2,330
Attending court	0	0	0	0	0	0	0	0	5
New claim review	0	0	0	0	0	0	0	145	1,505
Defective claim	0	0	10	0	0	0	15	345	1,545
Ceased claiming	5	20	20	5	5	10	65	740	6,540
Deceased	0	0	0	0	0	0	0	15	80
Not known	70	25	40	30	5	15	185	3,900	27,535
Failed to sign	65	85	135	50	25	45	405	9,835	76,255
<b>Total</b>	<b>335</b>	<b>285</b>	<b>460</b>	<b>235</b>	<b>90</b>	<b>190</b>	<b>1,595</b>	<b>34,240</b>	<b>260,470</b>

Values are rounded to the nearest 5.

Table 7b

Reason for Leaving the Register - Proportion									
	Allerdale	Barrow	Carlisle	Copeland	Eden	South Lakeland	Cumbria	North West	United Kingdom
Found work	82.1	73.6	77.9	86.8	75.0	76.3	79.0	80.4	78.2
Increased work to 16+ hours/week	0.0	0.6	0.0	0.0	0.0	0.0	0.1	0.7	1.2
Gone abroad	2.5	4.5	3.2	2.6	7.1	9.2	4.2	4.3	4.7
Claimed Income Support	6.5	2.2	0.7	0.7	0.0	0.0	2.0	2.1	2.2
Claimed Incapacity Benefit	1.0	0.0	0.7	1.3	1.8	0.8	0.8	1.1	1.1
Claimed another benefit	2.0	3.4	3.5	2.0	0.0	3.1	2.7	2.3	2.1
Gone to full-time education	0.0	0.0	1.4	0.0	0.0	0.0	0.4	0.7	0.8
Gone onto approved training	0.0	0.0	0.4	0.0	0.0	0.0	0.1	0.1	0.1
Transfer to Govt-supported training	0.0	1.1	0.7	0.7	0.0	0.8	0.6	0.6	1.8
Retirement age reached	0.0	0.0	0.0	0.0	0.0	0.0	0.0	0.1	0.1
Automatic credits payable	0.0	0.0	0.0	0.0	0.0	0.0	0.0	0.0	0.0
Claimed back-to-work bonus	0.0	0.0	0.0	0.0	0.0	0.0	0.0	0.0	0.0
Gone to prison	2.0	3.4	2.5	1.3	1.8	3.1	2.4	1.6	1.5
Attending court	0.0	0.0	0.0	0.0	0.0	0.0	0.0	0.0	0.0
New claim review	0.0	0.0	0.0	0.0	0.0	0.0	0.0	0.7	1.0
Defective claim	1.0	1.1	2.8	0.7	1.8	0.8	1.5	1.7	1.0
Ceased claiming	3.0	10.1	6.3	3.9	12.5	6.1	6.3	3.6	4.2
Deceased	0.0	0.0	0.0	0.0	0.0	0.0	0.0	0.1	0.1

Note: Proportions are of those who gave a reason for leaving the register (ie total does not include failed to sign or not known)

### NOTIFIED VACANCIES BY INDUSTRY – Dec 2011

Table 8a

Industry	Area							Cumbria	
	Allerdale	Barrow	Carlisle	Copeland	Eden	South Lakeland	Cumbria	Monthly Change	Annual Change
Agriculture & Fishing	0	0	#	0	#	#	3	-1	3
Energy & Water	0	0	#	0	#	#	5	0	0
Manufacturing	7	4	5	#	4	13	36	-285	3
Construction	15	33	46	3	#	3	102	8	53
Retail, Hotels & Restaurants	44	30	60	20	37	65	256	-203	-107
Transport & Comms	#	0	29	17	20	25	92	38	53
Business Activities & Finance	186	251	202	48	120	167	974	21	-141
Public Administration	49	15	58	20	22	222	386	-6	194
Other Service	0	31	3	#	8	18	62	-14	-45
Total	302	365	406	110	216	516	1,915	-440	9
Total Monthly Change	56	81	-340	-50	-33	-153	-440		
Total Annual Change	83	98	-310	17	31	90	9		

NB: Reporting months are now on a standardised 4 1/3 basis in order to smooth out variations due to differing time periods.

### LIVE UNFILLED VACANCIES BY INDUSTRY – Dec 2011

Table 8b

Industry	Area							Cumbria	
	Allerdale	Barrow	Carlisle	Copeland	Eden	South Lakeland	Cumbria	Monthly Change	Annual Change
Agriculture & Fishing	0	0	0	0	1	2	3	0	1
Energy & Water	0	0	2	0	1	1	4	4	-12
Manufacturing	6	5	3	1	3	5	23	-246	4
Construction	18	31	22	4	3	5	83	20	42
Retail, Hotels & Restaurants	33	21	53	15	31	50	203	-179	-69
Transport & Comms	2	0	21	3	18	22	66	-1	40
Business Activities & Finance	166	32	150	35	89	115	587	-69	-48
Public Administration	39	9	37	6	10	85	186	31	-257
Other Service	0	16	15	0	7	16	54	-52	-23
Total	264	114	303	64	163	301	1,209	-492	-322
Total Monthly Change	98	-38	-402	-120	30	-60	-492		
Total Annual Change	52	-89	-157	-35	-9	-84	-322		

Note: The JobCentre Plus vacancies dataset does not provide comprehensive measures relating to all vacancies in the economy. The proportion of vacancies which are notified by employers varies over time, according to the occupation and industry of the area and labour market conditions. Notified vacancies are those placed with JobCentre Plus during the month, Live Unfilled vacancies are those for which a jobseeker can actively apply on the day the count is taken.

### JSA CLAIMANT TO VACANCY RATIO - Dec 2011

Vacancy data can be used in conjunction with the claimant count to calculate a simple 'claimant to vacancy ratio'. This uses the number of live unfilled vacancies in a month, together with the number of claimants. A claimant/vacancy figure of more than 1 means that there are more claimants than live vacancies. (Note: the ratio is a snapshot on a given day and is particularly sensitive to variations in unfilled vacancies which can vary significantly at local level.)

**Table 9**

	Claimant count	Live vacancies	Claimant/vacancy ratio
Great Britain	1,509,736	269,089	5.61
Cumbria	8,823	1,209	7.30
Allerdale	1,927	264	7.30
Barrow in Furness	1,905	114	16.71
Carlisle	2,001	303	6.60
Copeland	1,657	64	25.89
Eden	416	163	2.55
South Lakeland	917	301	3.05

*Note: The JobCentre Plus vacancies dataset does not provide comprehensive measures relating to all vacancies in the economy. The proportion of vacancies which are notified by employers varies over time, according to the occupation and industry of the area and labour market conditions. Notified vacancies are those placed with JobCentre Plus during the month, Live Unfilled vacancies are those for which a jobseeker can actively apply on the day the count is taken.*

For definitions of areas or for further information, please contact  
Ginny Murphy, Economic Intelligence Officer, Cumbria County Council  
Tel: 01228 226753 E-mail: [ginny.murphy@cumbria.gov.uk](mailto:ginny.murphy@cumbria.gov.uk)

Copies of previous releases, together with other labour market and economic data, can be found on the following website: [www.cumbriaobservatory.org.uk](http://www.cumbriaobservatory.org.uk)

### RESIDENCE-BASED JSA CLAIMANT COUNTS & RATES – Dec 2011

#### Locally Defined Areas

	Locally Defined Areas									
	Male		Female		All Persons		All Persons			
	No	Rate	No	Rate	No	Rate	Monthly Change		Annual Change	
							No	Rate	No	Rate
<b>Key Service Centres</b>										
Alston KSC	19	2.8	12	1.9	31	2.3	-4	-0.3	6	0.5
Ambleside KSC	12	1.1	4	0.3	16	0.7	0	0.0	-6	-0.3
Appleby KSC	21	2.5	7	0.8	28	1.6	5	0.3	9	0.5
Aspatia KSC	48	4.7	22	2.0	70	3.3	0	0.0	4	0.2
Barrow KSC	1,180	6.5	519	2.8	1,699	4.7	19	0.1	400	1.1
Brampton KSC	69	5.1	21	1.6	90	3.3	6	0.2	13	0.5
Brough KSC	8	2.0	#	#	10	1.2	0	0.0	3	0.4
Carlisle KSC	1,138	4.9	516	2.2	1,654	3.6	-39	-0.1	194	0.4
Cleator Moor KSC	165	7.5	62	2.8	227	5.2	11	0.2	15	0.3
Cockermouth KSC	84	3.6	30	1.2	114	2.4	11	0.2	17	0.4
Dalton in Furness KSC	138	3.4	68	1.7	206	2.5	6	0.1	42	0.5
Egremont KSC	143	5.5	53	2.1	196	3.8	5	0.1	-13	-0.3
Grange KSC	19	1.9	8	0.8	27	1.3	7	0.3	8	0.4
Grasmere KSC	#	#	#	#	3	0.3	-1	-0.1	-5	-0.5
Hawkshead KSC	7	1.3	3	0.6	10	1.0	1	0.1	-3	-0.3
Kendal KSC	227	2.6	103	1.2	330	1.9	26	0.2	80	0.5
Keswick KSC	31	1.9	25	1.6	56	1.8	9	0.3	1	0.0
Kirkby Lonsdale KSC	8	1.2	3	0.4	11	0.8	2	0.1	4	0.3
Kirkby Stephen KSC	10	1.4	6	0.8	16	1.1	0	0.0	-8	-0.6
Lazonby KSC	5	1.2	#	#	6	0.7	-2	-0.2	-1	-0.1
Longtown KSC	53	3.8	13	1.0	66	2.5	2	0.1	16	0.6
Maryport KSC	281	7.7	110	2.9	391	5.3	0	0.0	49	0.7
Millom KSC	138	4.8	51	2.3	189	3.7	4	0.1	32	0.6
Milnthorpe KSC	11	1.9	5	0.8	16	1.3	1	0.1	-4	-0.3
Penrith KSC	123	2.7	58	1.3	181	2.0	17	0.2	30	0.3
Sedbergh KSC	12	1.0	9	0.9	21	0.9	4	0.2	6	0.3
Silloth KSC	42	4.6	17	1.8	59	3.2	3	0.2	14	0.8
Ulverston KSC	134	3.8	80	2.3	214	3.1	4	0.1	49	0.7
Whitehaven KSC	465	5.7	184	2.3	649	4.0	10	0.1	96	0.6
Wigton KSC	65	3.9	34	1.9	99	2.9	1	0.0	28	0.8
Windermere KSC	52	1.9	16	0.6	68	1.3	13	0.2	3	0.1
Workington KSC	546	7.1	236	3.1	782	5.1	-19	-0.1	122	0.8
<b>Housing Market Areas</b>										
Alston Moor HMA	19	2.8	12	1.9	31	2.3	-4	-0.3	6	0.5
Barrow HMA	1,318	5.9	587	2.6	1,905	4.3	25	0.1	442	1.0
Carlisle HMA	1,151	4.9	524	2.2	1,675	3.5	-42	-0.1	198	0.4
Central Lakes HMA	83	1.4	29	0.5	112	0.9	13	0.1	-10	-0.1
Cockermouth HMA	84	3.6	30	1.2	114	2.4	11	0.2	17	0.4
Eden Valley North HMA	161	2.0	84	1.0	245	1.5	19	0.1	32	0.2
Eden Valley South HMA	79	1.5	33	0.6	112	1.1	10	0.1	-3	0.0
Kendal HMA	227	2.6	103	1.2	330	1.9	26	0.2	80	0.5
Millom HMA	138	4.8	51	2.3	189	3.7	4	0.1	32	0.6
North Lakes - East HMA	16	0.9	12	0.7	28	0.8	2	0.1	-1	0.0
North Lakes - West HMA	46	1.5	36	1.2	82	1.3	4	0.1	-3	0.0
Rural Carlisle East HMA	184	2.5	73	1.0	257	1.7	6	0.0	39	0.3
Rural Carlisle West HMA	45	1.8	24	1.0	69	1.4	3	0.1	1	0.0
Rural Kendal HMA	80	1.2	38	0.5	118	0.9	11	0.1	8	0.1
Sedbergh HMA	12	1.0	9	0.9	21	0.9	4	0.2	6	0.3
Ulverston and Furness HMA	181	3.0	98	1.6	279	2.3	5	0.0	49	0.4
West Lakes HMA	46	1.9	15	0.6	61	1.3	0	0.0	-34	-0.7
Whitehaven HMA	1,003	5.8	404	2.4	1,407	4.1	23	0.1	126	0.4
Wigton HMA	99	2.5	52	1.3	151	1.9	4	0.1	39	0.5
Workington and Maryport HMA	1,116	5.7	464	2.3	1,580	4.0	-39	-0.1	166	0.4

# Labour Market Briefing January 2012

Locally Defined Areas										
	Male		Female		All Persons		All Persons			
	No	Rate	No	Rate	No	Rate	Monthly Change		Annual Change	
							No	Rate	No	Rate
<b>Children's' Services Local Delivery Project Areas</b>										
Alston CS LDP	19	2.8	12	1.9	31	2.3	-4	-0.3	6	0.5
Brampton CS LDP	197	2.4	81	1.0	278	1.7	3	0.0	43	0.3
Cleator Moor & Egremont CS LDP	473	5.1	180	2.0	653	3.6	16	0.1	10	0.1
Carlisle North CS LDP	85	2.3	43	1.1	128	1.7	-25	-0.3	17	0.2
Carlisle South CS LDP	566	5.9	264	2.7	830	4.3	0	0.0	111	0.6
Carlisle West CS LDP	496	4.8	215	2.1	711	3.4	-15	-0.1	57	0.3
Cockermouth & Keswick CS LDP	152	2.2	77	1.1	229	1.7	13	0.1	4	0.0
Dalston CS LDP	36	1.9	18	1.0	54	1.5	4	0.1	10	0.3
Furness CS LDP	1,499	5.3	685	2.4	2,184	3.9	30	0.1	491	0.9
Grange CS LDP	36	1.4	20	0.8	56	1.1	6	0.1	10	0.2
Kendal CS LDP	245	2.3	109	1.0	354	1.7	23	0.1	73	0.3
Kirkby Lonsdale CS LDP	8	1.2	3	0.4	11	0.8	2	0.1	4	0.3
Lakes CS LDP	27	1.0	10	0.4	37	0.7	2	0.0	-10	-0.2
Maryport CS LDP	312	6.7	125	2.6	437	4.6	-4	0.0	35	0.4
Middle Eden CS LDP	42	1.4	20	0.7	62	1.0	7	0.1	-1	0.0
Milnthorpe CS LDP	54	1.3	29	0.7	83	1.0	12	0.1	11	0.1
North Allerdale CS LDP	229	2.9	117	1.5	346	2.2	-11	-0.1	61	0.4
Penrith CS LDP	183	1.8	93	0.9	276	1.4	26	0.1	30	0.1
Sedbergh CS LDP	12	1.0	9	0.9	21	0.9	4	0.2	6	0.3
South Copeland CS LDP	151	4.1	56	1.8	207	3.0	2	0.0	16	0.2
Upper Eden CS LDP	31	1.4	16	0.7	47	1.0	-2	0.0	-1	0.0
Whitehaven CS LDP	563	5.7	234	2.4	797	4.1	9	0.0	98	0.5
Windermere CS LDP	59	1.8	17	0.5	76	1.2	15	0.2	6	0.1
Workington CS LDP	652	6.7	263	2.7	915	4.7	-18	-0.1	119	0.6
<b>Health Areas</b>										
Carlisle City South (Health)	1,053	5.4	473	2.4	1,526	3.9	-14	0.0	177	0.5
Cockermouth & Keswick (Health)	152	2.2	77	1.1	229	1.7	13	0.1	4	0.0
Maryport (Health)	312	6.7	125	2.6	437	4.6	-4	0.0	35	0.4
Mid Copeland (Health)	473	5.1	180	2.0	653	3.6	16	0.1	10	0.1
North Allerdale (Health)	229	2.9	117	1.5	346	2.2	-11	-0.1	61	0.4
South Copeland (Health)	151	4.1	56	1.8	207	3.0	2	0.0	16	0.2
Whitehaven (Health)	563	5.7	234	2.4	797	4.1	9	0.0	98	0.5
Workington (Health)	652	6.7	263	2.7	915	4.7	-18	-0.1	119	0.6
<b>West Cumbria Partnership Areas</b>										
Cleator Moor WCP	248	6.3	97	2.5	345	4.4	15	0.2	34	0.4
Cockermouth WCP	118	2.5	47	1.0	165	1.7	5	0.1	3	0.0
Egremont WCP	197	4.8	74	1.9	271	3.4	0	0.0	-8	-0.1
Keswick WCP	34	1.6	30	1.5	64	1.5	8	0.2	1	0.0
Maryport WCP	312	6.7	125	2.6	437	4.6	-4	0.0	35	0.4
Mid Copeland WCP	28	2.3	9	0.8	37	1.5	1	0.0	-16	-0.7
Millom WCP	151	4.1	56	1.8	207	3.0	2	0.0	16	0.2
North Allerdale WCP	229	2.9	117	1.5	346	2.2	-11	-0.1	61	0.4
Whitehaven WCP	563	5.7	234	2.4	797	4.1	9	0.0	98	0.5
Workington WCP	652	6.7	263	2.7	915	4.7	-18	-0.1	119	0.6
<b>Other Areas</b>										
Lake District National Park	231	1.5	108	0.7	339	1.1	31	0.1	-34	-0.1
Keswick Market Town Initiative	34	1.6	30	1.5	64	1.5	8	0.2	1	0.0
Longtown Market Town Initiative	64	3.1	21	1.1	85	2.2	10	0.3	22	0.6
Penrith Market Town Initiative	200	1.8	104	0.9	304	1.3	30	0.1	27	0.1
Ulverston Market Town Initiative	165	3.1	93	1.7	258	2.4	3	0.0	45	0.4

NB: Counts of less than 3 are denoted by a #. Wards are Census 2003 wards.

Note 1: Rates are of the Working Age Population.

Note 2: Please note that the definition of working age is now 16-65 for both males and females.

### RESIDENCE-BASED JSA CLAIMANT COUNTS & RATES – Dec 2011

#### Wards

WARD	Male		Female		All Persons		All Persons			
	No	Rate	No	Rate	No	Rate	Monthly Change		Annual Change	
							No	Rate	No	Rate
<b>ALLERDALE</b>										
All Saints	58	4.1	21	1.4	79	2.7	7	0.2	12	0.4
Aspatria	48	4.7	22	2.0	70	3.3	0	0.0	4	0.2
Boltons	5	0.9	6	1.1	11	1.0	-4	-0.4	-2	-0.2
Broughton St Bridget's	21	1.6	12	0.9	33	1.2	-6	-0.2	-15	-0.6
Christchurch	26	2.8	9	0.9	35	1.8	4	0.2	5	0.3
Clifton	29	5.7	6	1.2	35	3.5	3	0.3	-11	-1.1
Crummock	7	1.5	0	0.0	7	0.7	0	0.0	-2	-0.2
Dalton	6	1.1	5	0.9	11	1.0	0	0.0	3	0.3
Derwent Valley	3	0.6	5	1.0	8	0.8	-1	-0.1	0	0.0
Ellen	31	3.1	15	1.5	46	2.3	-4	-0.2	-14	-0.7
Ellenborough	71	6.2	30	2.6	101	4.4	5	0.2	5	0.2
Ewanrigg	95	9.5	47	4.2	142	6.7	-2	-0.1	25	1.2
Flimby	37	6.8	12	2.3	49	4.5	-3	-0.3	6	0.6
Harrington	38	4.1	10	1.1	48	2.6	1	0.1	1	0.1
Holme	10	1.9	9	1.8	19	1.9	-4	-0.4	-9	-0.9
Keswick	31	1.9	25	1.6	56	1.8	9	0.3	1	0.0
Marsh	11	2.2	4	0.8	15	1.5	3	0.3	6	0.6
Moorclose	116	8.5	55	3.6	171	5.9	0	0.0	38	1.3
Moss Bay	156	11.9	72	5.1	228	8.4	-14	-0.5	22	0.8
Netherhall	78	8.1	21	2.1	99	5.1	0	0.0	13	0.7
Seaton	77	5.0	21	1.3	98	3.1	-2	-0.1	8	0.3
Silloth	42	4.6	17	1.8	59	3.2	3	0.2	14	0.8
Solway	14	2.7	8	1.6	22	2.1	-4	-0.4	12	1.2
St John's	81	4.8	27	1.7	108	3.3	6	0.2	12	0.4
St Michael's	144	8.1	66	4.1	210	6.2	-8	-0.2	46	1.4
Stainburn	11	1.9	6	1.1	17	1.5	-4	-0.4	3	0.3
Wampool	7	1.3	6	1.2	13	1.2	-2	-0.2	-1	-0.1
Warnell	8	1.3	3	0.5	11	0.9	-1	-0.1	2	0.2
Waver	8	1.4	5	0.9	13	1.1	3	0.3	4	0.3
Wharrels	11	2.1	3	0.6	14	1.4	-6	-0.6	3	0.3
Wigton	65	3.9	34	1.9	99	2.9	1	0.0	28	0.8
<b>BARROW</b>										
Barrow Island	121	13.5	46	5.8	167	9.9	4	0.2	30	1.8
Central	212	12.8	100	5.9	312	9.3	0	0.0	60	1.8
Dalton North	70	3.2	23	1.1	93	2.2	6	0.1	11	0.3
Dalton South	68	3.5	45	2.3	113	2.9	0	0.0	31	0.8
Hawcoat	23	1.7	8	0.6	31	1.2	-5	-0.2	14	0.5
Hindpool	183	10.7	67	3.8	250	7.2	12	0.3	68	2.0
Newbarns	87	4.6	39	2.1	126	3.4	3	0.1	53	1.4
Ormsgill	163	8.6	75	3.7	238	6.1	9	0.2	54	1.4
Parkside	65	3.6	30	1.7	95	2.7	-4	-0.1	18	0.5
Risedale	126	7.0	56	3.2	182	5.1	1	0.0	32	0.9
Roosecote	68	3.6	43	2.2	111	2.9	-2	-0.1	36	0.9
Walney North	68	4.3	29	1.8	97	3.0	-1	0.0	22	0.7
Walney South	64	3.6	26	1.5	90	2.6	2	0.1	13	0.4

NB: Counts of less than 3 are denoted by a #. Wards are Census 2003 wards.

Note 1: Rates are of the Working Age Population.

Note 2: Please note that the definition of working age is now 16-65 for both males and females.

# Labour Market Briefing

## January 2012

WARD	Male		Female		All Persons		All Persons			
							Monthly Change		Annual Change	
	No	Rate	No	Rate	No	Rate	No	Rate		
<b>CARLISLE</b>										
Belah	65	3.4	23	1.2	88	2.3	-7	-0.2	22	0.6
Belle Vue	78	4.3	48	2.4	126	3.3	-10	-0.3	16	0.4
Botcherby	118	6.3	57	2.8	175	4.5	-2	-0.1	-3	-0.1
Brampton	69	5.1	21	1.6	90	3.3	6	0.2	13	0.5
Burgh	9	1.3	6	0.9	15	1.1	-1	-0.1	-9	-0.7
Castle	157	6.9	52	2.6	209	4.9	6	0.1	10	0.2
Currock	117	5.7	61	3.1	178	4.4	5	0.1	18	0.4
Dalston	36	1.9	18	1.0	54	1.5	4	0.1	10	0.3
Denton Holme	95	4.4	52	2.4	147	3.4	1	0.0	0	0.0
Great Corby and Geltsdale	14	2.0	5	0.7	19	1.4	3	0.2	2	0.1
Harraby	86	4.4	30	1.5	116	2.9	-6	-0.2	11	0.3
Hayton	13	2.2	8	1.3	21	1.7	-3	-0.2	4	0.3
Irthing	9	1.5	4	0.7	13	1.1	-3	-0.2	-5	-0.4
Longtown & Rockcliffe	53	3.8	13	1.0	66	2.5	2	0.1	16	0.6
Lyne	11	1.7	8	1.3	19	1.5	8	0.6	6	0.5
Morton	107	6.7	36	2.2	143	4.4	-10	-0.3	18	0.6
St Aidans	113	5.3	62	2.9	175	4.1	4	0.1	48	1.1
Stanwix Rural	13	0.9	15	1.1	28	1.0	-3	-0.1	4	0.1
Stanwix Urban	20	1.1	20	1.1	40	1.1	-18	-0.5	-5	-0.1
Upperby	132	8.1	54	3.2	186	5.6	-1	0.0	37	1.1
Wetheral	15	1.1	7	0.5	22	0.8	-7	-0.3	3	0.1
Yewdale	50	2.7	21	1.1	71	1.9	-1	0.0	22	0.6
<b>COPELAND</b>										
Arlecdon	14	2.7	7	1.4	21	2.1	2	0.2	-1	-0.1
Beckermot	44	4.8	16	1.8	60	3.3	-2	-0.1	9	0.5
Bootle	8	2.1	3	0.7	11	1.4	-1	-0.1	-8	-1.0
Bransty	41	2.4	27	1.7	68	2.0	5	0.1	16	0.5
Cleator Moor North	96	7.0	36	2.8	132	4.9	7	0.3	1	0.0
Cleator Moor South	69	8.3	26	2.9	95	5.5	4	0.2	14	0.8
Distinguon	86	6.7	42	3.2	128	5.0	-3	-0.1	16	0.6
Egremont North	76	5.6	31	2.2	107	3.8	4	0.1	-12	-0.4
Egremont South	67	5.5	22	2.0	89	3.9	1	0.0	-1	0.0
Ennerdale	5	1.3	#	#	6	0.9	1	0.1	-2	-0.3
Frizington	64	7.8	27	3.3	91	5.5	1	0.1	22	1.3
Gosforth	6	1.5	4	1.0	10	1.2	1	0.1	-4	-0.5
Harbour	105	7.3	34	2.9	139	5.3	-6	-0.2	20	0.8
Haverigg	16	1.6	6	1.5	22	1.6	-1	-0.1	7	0.5
Hensingham	79	6.4	24	1.8	103	4.0	6	0.2	-1	0.0
Hillcrest	16	1.9	6	0.8	22	1.3	-1	-0.1	7	0.4
Holborn Hill	47	6.1	16	2.0	63	4.0	-2	-0.1	7	0.4
Kells	37	4.9	15	1.9	52	3.4	-4	-0.3	19	1.2
Millom Without	5	1.0	#	#	7	0.8	-1	-0.1	-8	-0.9
Mirehouse	107	8.1	35	2.5	142	5.2	6	0.2	10	0.4
Moresby	12	3.0	8	1.9	20	2.4	2	0.2	-14	-1.7
Newtown	75	6.8	29	2.8	104	4.9	7	0.3	18	0.8
Sandwith	80	10.3	43	5.1	123	7.6	4	0.2	25	1.6
Seascale	22	2.7	5	0.6	27	1.7	0	0.0	-12	-0.8
St Bees	10	1.7	5	0.9	15	1.3	-3	-0.3	-4	-0.4

NB: Counts of less than 3 are denoted by a #. Wards are Census 2003 wards.

Note 1: Rates are of the Working Age Population.

Note 2: Please note that the definition of working age is now 16-65 for both males and females.

# Labour Market Briefing

## January 2012

WARD	Male		Female		All Persons		All Persons			
							Monthly Change		Annual Change	
	No	Rate	No	Rate	No	Rate	No	Rate		
<b>EDEN</b>										
Alston Moor	19	2.8	12	1.9	31	2.3	-4	-0.3	6	0.5
Appleby (Appleby)	10	3.1	3	0.9	13	1.9	5	0.7	1	0.1
Appleby (Bongate)	11	2.1	4	0.8	15	1.4	0	0.0	8	0.8
Askham	6	1.3	4	0.9	10	1.1	1	0.1	0	0.0
Brough	8	2.0	#	#	10	1.2	0	0.0	3	0.4
Crosby Ravensworth	4	0.9	#	#	5	0.5	0	0.0	-1	-0.1
Dacre	5	1.2	3	0.7	8	0.9	2	0.2	-1	-0.1
Eamont	12	3.0	#	#	14	1.7	6	0.7	3	0.4
Greystoke	3	0.7	#	#	5	0.6	0	0.0	#	0.4
Hartside	6	1.7	5	1.3	11	1.5	1	0.1	4	0.5
Hesket	5	0.5	5	0.5	10	0.5	0	0.0	-9	-0.5
Kirkby Stephen	10	1.4	6	0.8	16	1.1	0	0.0	-8	-0.6
Kirkby Thore	8	1.7	6	1.2	14	1.4	3	0.3	-2	-0.2
Kirkoswald	6	1.2	5	1.1	11	1.2	1	0.1	7	0.7
Langwathby	4	0.8	#	#	6	0.6	-1	-0.1	-1	-0.1
Lazonby	5	1.2	#	#	6	0.7	-2	-0.2	-1	-0.1
Long Marton	0	0.0	#	#	#	#	#	-0.3	#	-0.8
Morland	3	0.7	0	0.0	3	0.4	0	0.0	-5	-0.6
Orton with Tebay	4	0.9	4	0.8	8	0.9	-2	-0.2	0	0.0
Penrith Carleton	4	0.9	3	0.6	7	0.8	-1	-0.1	2	0.2
Penrith East	23	3.0	5	0.6	28	1.8	4	0.3	3	0.2
Penrith North	30	2.4	12	1.0	42	1.7	-2	-0.1	3	0.1
Penrith Pategill	12	3.6	11	2.7	23	3.1	6	0.8	8	1.1
Penrith South	23	3.3	16	2.4	39	2.8	6	0.4	16	1.2
Penrith West	31	2.8	11	1.1	42	2.0	4	0.2	-2	-0.1
Ravenstonedale	5	1.7	#	#	7	1.2	1	0.2	2	0.3
Shap	6	1.3	#	#	8	0.9	2	0.2	-2	-0.2
Skelton	7	1.4	5	1.1	12	1.3	1	0.1	3	0.3
Ullswater	#	#	4	0.8	5	0.6	-1	-0.1	-2	-0.2
Warcop	4	1.0	#	#	6	0.7	-1	-0.1	2	0.2

NB: Counts of less than 3 are denoted by a #. Wards are Census 2003 wards.

Note 1: Rates are of the Working Age Population.

Note 2: Please note that the definition of working age is now 16-65 for both males and females.

# Labour Market Briefing

## January 2012

WARD	Male		Female		All Persons		All Persons			
	No	Rate	No	Rate	No	Rate	Monthly Change		Annual Change	
							No	Rate	No	Rate
<b>SOUTH LAKELAND</b>										
Arnside & Beetham	13	1.3	3	0.3	16	0.8	1	0.0	-1	0.0
Broughton	16	2.3	5	0.8	21	1.5	2	0.1	4	0.3
Burneside	7	1.2	#	#	9	0.8	2	0.2	-4	-0.3
Burton & Holme	5	0.6	3	0.3	8	0.5	-1	-0.1	-1	-0.1
Cartmel	5	1.0	4	0.7	9	0.9	1	0.1	0	0.0
Coniston	6	1.1	#	#	8	0.7	2	0.2	4	0.4
Crake Valley	4	0.7	3	0.5	7	0.6	-2	-0.2	-4	-0.3
Crooklands	10	1.4	3	0.4	13	0.9	4	0.3	0	0.0
Grange	19	1.9	8	0.8	27	1.3	7	0.3	8	0.4
Hawkshead	7	1.3	3	0.6	10	1.0	1	0.1	-3	-0.3
Holker	8	1.5	5	1.0	13	1.3	0	0.0	5	0.5
Kendal Castle	6	1.3	4	0.8	10	1.1	1	0.1	-1	-0.1
Kendal Far Cross	16	2.3	5	0.7	21	1.5	-2	-0.1	3	0.2
Kendal Fell	28	4.5	7	1.2	35	2.9	-4	-0.3	-2	-0.2
Kendal Glebelands	8	1.5	6	1.1	14	1.3	3	0.3	5	0.5
Kendal Heron Hill	13	2.2	3	0.5	16	1.4	4	0.3	9	0.8
Kendal Highgate	33	5.6	12	2.3	45	4.1	5	0.5	21	1.9
Kendal Kirkland	33	5.6	16	2.5	49	4.0	19	1.6	18	1.5
Kendal Mintsfeet	17	2.5	11	1.6	28	2.1	-4	-0.3	2	0.1
Kendal Nether	6	1.2	4	0.8	10	1.0	1	0.1	7	0.7
Kendal Oxenholme	21	2.7	8	1.0	29	1.9	-1	-0.1	6	0.4
Kendal Parks	7	1.0	10	1.4	17	1.2	5	0.3	6	0.4
Kendal Stonecross	9	1.8	3	0.6	12	1.2	0	0.0	1	0.1
Kendal Strickland	7	1.0	4	0.6	11	0.8	-2	-0.1	-4	-0.3
Kendal Underley	23	3.4	10	1.5	33	2.5	1	0.1	9	0.7
Kirkby Lonsdale	8	1.2	3	0.4	11	0.8	2	0.1	4	0.3
Lakes Ambleside	12	1.1	4	0.3	16	0.7	0	0.0	-6	-0.3
Lakes Grasmere	#	#	#	#	3	0.3	-1	-0.1	-5	-0.5
Levens	5	1.1	7	1.4	12	1.2	1	0.1	6	0.6
Low Furness & Swarthmoor	27	2.3	10	0.8	37	1.5	1	0.0	0	0.0
Lyth Valley	10	1.6	8	1.2	18	1.4	6	0.5	11	0.9
Milnthorpe	11	1.9	5	0.8	16	1.3	1	0.1	-4	-0.3
Natland	5	0.9	3	0.5	8	0.7	0	0.0	1	0.1
Sedbergh	12	1.0	9	0.9	21	0.9	4	0.2	6	0.3
Staveley-in-Cartmel	4	0.8	3	0.6	7	0.7	-2	-0.2	-3	-0.3
Staveley-in-Westmorland	7	1.2	#	#	8	0.7	2	0.2	3	0.2
Ulverston Central	21	3.6	15	2.7	36	3.2	-1	-0.1	3	0.3
Ulverston East	40	5.6	24	3.3	64	4.5	-3	-0.2	12	0.8
Ulverston North	20	3.2	13	2.1	33	2.6	-3	-0.2	15	1.2
Ulverston South	15	2.9	11	2.0	26	2.4	1	0.1	7	0.7
Ulverston Town	25	4.5	11	2.1	36	3.3	5	0.5	2	0.2
Ulverston West	13	2.5	6	1.2	19	1.9	5	0.5	10	1.0
Whinfell	6	0.8	#	#	7	0.5	-5	-0.3	-4	-0.3
Windermere Applethwaite	10	1.4	6	1.0	16	1.2	2	0.1	-3	-0.2
Windermere Bowness North	9	1.5	4	0.7	13	1.1	-2	-0.2	1	0.1
Windermere Bowness South	13	1.9	4	0.6	17	1.3	6	0.4	10	0.7
Windermere Town	20	2.7	#	#	22	1.5	7	0.5	-5	-0.3

NB: Counts of less than 3 are denoted by a #. Wards are Census 2003 wards.

Note 1: Rates are of the Working Age Population.

Note 2: Please note that the definition of working age is now 16-65 for both males and females.