

The November 2011 unemployment and vacancy figures were released by the Office for National Statistics on 14th December 2011. The JSA Claimant Count was taken on 10th November 2011 and the vacancy count was for the month to 4th November 2011.

The JSA Claimant Count & Rate (not seasonally adjusted)

The JSA claimant *count* in Cumbria fell by 15 between Oct and Nov 2011 to 8,728. This non-seasonally adjusted figure also fell both regionally and nationally (see “other measures of joblessness” for the seasonally adjusted national figure). The claimant count rose in Barrow (21), Carlisle (24) and South Lakeland (20) but fell in Allerdale (-13), Copeland (-66) and Eden (-1). Between the same two months last year, the count in Cumbria fell by 40 people. The JSA claimant *rate* in Cumbria in Nov 2011 was unchanged at 2.8%. The rate was also unchanged nationally (3.9%) and regionally (4.4%).

Compared to a year ago, the JSA claimant count in Cumbria is 1,243 higher, a rise of 16.6% over the year. It is also higher nationally than a year ago but by a smaller margin, 10.3%. The claimant *rate* in Cumbria is up by 0.4 compared to a year ago, the national rate is also up by 0.4 compared to a year ago.

A third of all claimants, 2,940, were young people aged 16-24, a countywide fall of 85 from last month. Overall, 5.9% of all people in this age group are claiming JSA, lower than the national average of 6.3% but more than double the rate for the population as a whole in Cumbria. JSA Claimant rates for young people in Allerdale (7.6%), Barrow (9.0%) and Copeland (8.6%) are higher than nationally.

Other Measures of Joblessness

These figures are often quoted by the national press but are not available for local areas. They are provided here for information but should not directly be compared with those above as the methodology used to compile them is different.

The jobless total for the UK (claimants and non claimants looking for work) rose by 128,000 over the quarter ending Oct 2011 to 2.64 million, the highest it's been since 1994. The jobless rate rose by 0.4 over the quarter to 8.3%. Similar figures using the wider definition of joblessness are not available at local level.

The seasonally adjusted claimant count for the UK was 1,598,600 in Nov 2011, up by 3,000 over the previous month. Comparable seasonally adjusted figures are not available at local level.

Notified Vacancies

The number of new vacancies notified to JobCentre Plus in Cumbria in the month to 4th November 2011 was 2,355 a fall of 199 compared to the number notified in October but 19 more than were notified in the same month last year.

JSA Claimant to Vacancy Ratio

The ratio of claimants to live unfilled vacancies in Cumbria was 5.13 in Nov 2011 (GB 4.72). The ratio was especially high in Allerdale (11.73) and in Barrow (12.37). (Note: the ratio is particularly sensitive to variations in notified vacancies which can vary significantly from month to month at local level.)

RESIDENCE-BASED CLAIMANT COUNTS & RATES – Nov 2011

Table 1

National, County, Districts, Travel to Work Areas & Parliamentary Constituencies										
	Male		Female		All Persons		All Persons			
	No	Rate	No	Rate	No	Rate	Monthly Change		Annual Change	
	No	Rate	No	Rate	No	Rate	No	Rate	No	Rate
Cumbria	5,968	3.8	2,760	1.8	8,728	2.8	-15	0.0	1,243	0.4
North West	133,838	6.0	61,719	2.8	195,557	4.4	-781	0.0	22,225	0.5
United Kingdom	1,039,898	5.2	518,858	2.6	1,558,756	3.9	-3,745	0.0	145,491	0.4
Great Britain	997,752	5.1	501,631	2.6	1,499,383	3.8	-3,145	0.0	142,944	0.4
<i>District</i>										
Allerdale	1,351	4.6	596	2.0	1,947	3.3	-13	0.0	270	0.5
Barrow in Furness	1,278	5.7	602	2.7	1,880	4.2	21	0.0	372	0.8
Carlisle	1,386	4.1	648	1.9	2,034	3.0	24	0.0	296	0.4
Copeland	1,133	5.0	497	2.3	1,630	3.7	-66	-0.1	155	0.3
Eden	252	1.6	137	0.9	389	1.2	-1	0.0	20	0.1
South Lakeland	568	1.8	280	0.9	848	1.4	20	0.0	130	0.2
<i>Travel to Work Area</i>										
Barrow in Furness	1,463	5.0	691	2.4	2,154	3.7	26	0.0	427	0.7
Carlisle	1,642	3.9	784	1.8	2,426	2.8	49	0.1	346	0.4
Kendal	383	1.5	191	0.7	574	1.1	15	0.0	75	0.1
Penrith & Appleby	227	1.5	121	0.8	348	1.2	1	0.0	18	0.1
Whitehaven	1,072	4.8	466	2.2	1,538	3.5	-55	-0.1	135	0.3
Workington & Keswick	1,268	5.1	545	2.2	1,813	3.6	-39	-0.1	248	0.5
Lancaster & Morecambe	1,990	4.2	892	1.9	2,882	3.0	41	0.0	456	0.5
<i>Parliamentary Constituency</i>										
Barrow & Furness	1,463	5.0	691	2.4	2,154	3.7	26	0.0	427	0.7
Carlisle	1,217	4.6	571	2.1	1,788	3.4	17	0.0	268	0.5
Copeland	1,176	4.5	528	2.1	1,704	3.3	-65	-0.1	164	0.3
Penrith & The Border	492	1.9	253	1.0	745	1.5	15	0.0	76	0.2
Westmorland & Lonsdale	383	1.5	191	0.7	574	1.1	15	0.0	75	0.1
Workington	1,237	5.1	526	2.2	1,763	3.6	-23	0.0	233	0.5

NB: Rates are of the resident working age population

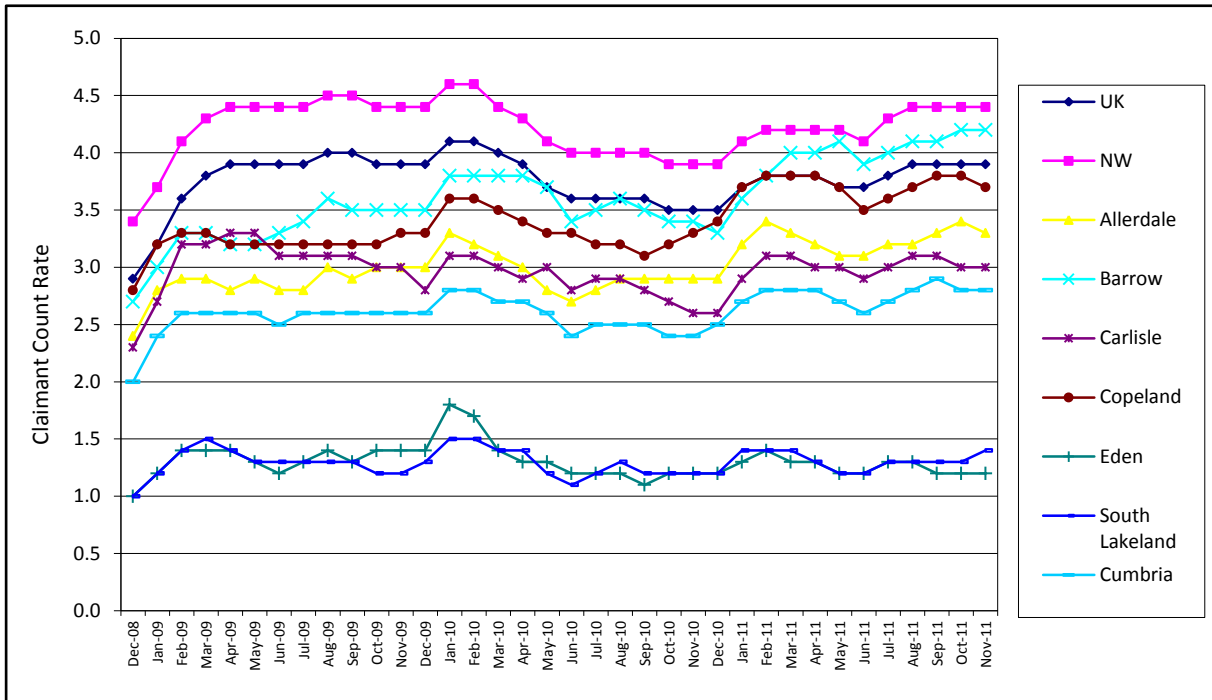
Note 1: From the May 2010 Briefing onwards, Parliamentary Constituencies are the 2010 boundaries.

Note 2: Please note that the definition of working age is now 16-65 for both males and females.

Labour Market Briefing December 2011

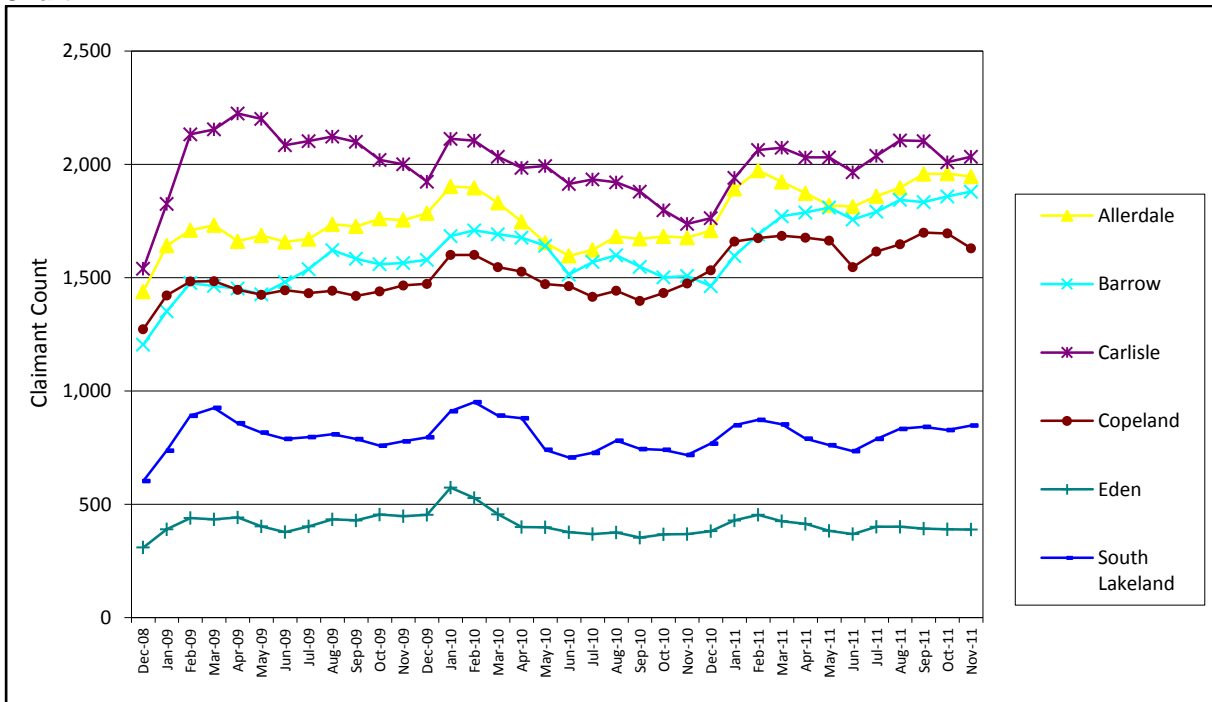
JSA CLAIMANT RATES – 3 Yr Trend

Chart 1



JSA CLAIMANT COUNTS – 3 Yr Trend

Chart 2



LONG TERM JSA CLAIMANTS – Nov 2011

Table 2

	Claiming Over 6 Months				Claiming Over a Year			
	No	Rate	Change		No	Rate	Change	
			Monthly	Annual			Monthly	Annual
Cumbria	3,065	1.0	5	1,030	1,130	0.4	55	265
North West	75,270	1.7	145	20,280	33,645	0.8	1,725	5,575
United Kingdom	624,455	1.5	630	152,095	278,600	0.7	13,720	35,270
Allerdale	760	1.3	-5	265	305	0.5	10	95
Barrow-in-Furness	675	1.5	-5	270	215	0.5	20	40
Carlisle	630	0.9	5	135	245	0.4	15	45
Copeland	680	1.5	-5	280	255	0.6	5	95
Eden	110	0.4	-5	25	35	0.1	-5	-5
South Lakeland	210	0.3	20	55	70	0.1	0	-5

Note: Rates are of the Working Age Population.

YOUNG JSA CLAIMANTS (aged 16-24) – Nov 2011

Table 3

	Male		Female		All young people		All young people			
	No	Rate	No	Rate	No	Rate	Monthly Change		Annual Change	
							No	Rate	No	Rate
Cumbria	2,050	7.8	890	3.7	2,940	5.9	-85	-2.8	620	26.7
North West	42,705	9.6	20,395	4.8	63,105	7.2	-1,270	-2.0	10,035	18.9
United Kingdom	315,395	8.2	158,850	4.4	474,245	6.3	-7,755	-1.6	66,730	16.4
Allerdale	490	10.3	195	4.6	685	7.6	-10	-1.4	180	35.6
Barrow	485	11.5	240	6.2	725	9.0	-15	-2.0	180	33.0
Carlisle	390	6.4	190	3.2	580	4.8	-20	-3.3	90	18.4
Copeland	440	11.6	170	5.2	610	8.6	-35	-5.4	105	20.8
Eden	80	3.3	35	1.6	115	2.5	-5	-4.2	10	9.5
South Lakeland	160	3.2	65	1.4	225	2.4	0	0.0	50	28.6
Barrow-in-Furness TTWA	555	n/a	265	n/a	820	n/a	-15	-1.8	215	35.5
Carlisle TTWA	480	n/a	225	n/a	705	n/a	0	3.2	125	21.6
Kendal TTWA	95	n/a	40	n/a	130	n/a	-5	5.6	15	13.0
Penrith & Appleby TTWA	75	n/a	35	n/a	110	n/a	0	0.0	15	15.8
Whitehaven TTWA	415	n/a	155	n/a	570	n/a	-35	-5.7	100	21.3
Workington & Keswick TTWA	465	n/a	190	n/a	655	n/a	-20	0.0	165	33.7

Note: Rates are of the population aged 16-24. Rates are not available for Travel to Work Areas

LONG TERM YOUNG JSA CLAIMANTS (aged 16-24) – Nov 2011

Table 4

	YPs Claiming Over 6 Months				YPs Claiming Over a Year			
	No	Rate	Change		No	Rate	Change	
			Monthly	Annual			Monthly	Annual
Cumbria	655	1.3	30	445	50	0.1	15	40
North West	15,560	1.8	260	7,855	3,840	0.4	455	1,315
United Kingdom	125,220	1.7	600	61,145	33,965	0.5	3,710	12,060
Allerdale	155	1.7	5	110	10	0.1	0	10
Barrow-in-Furness	185	2.3	5	135	15	0.2	10	15
Carlisle	100	0.8	10	55	10	0.1	0	10
Copeland	165	2.3	10	115	10	0.2	0	10
Eden	20	0.4	0	10	0	0.0	0	0
South Lakeland	30	0.3	5	20	0	0.0	0	-5

Note: Rates are of the population aged 16-24.

JSA CLAIMANT USUAL AND SOUGHT OCCUPATION – Nov 2011

Table 5

OCCUPATION	Usual Occupation			Sought Occupation		
	Male	Female	Total	Male	Female	Total
Occupation unknown	60	70	130	60	70	130
Managers and Senior Officials	180	75	255	180	70	250
Professional Occupations	170	95	260	165	90	260
Associate Professional and Technical Occupations	285	85	370	285	85	370
Administrative and Secretarial Occupations	335	430	765	335	440	775
Skilled Trades Occupations	945	30	975	940	30	970
Personal Service Occupations	125	430	560	135	430	565
Sales and Customer Service occupations	860	945	1,805	855	950	1,805
Process, Plant and Machine Operatives	855	65	925	850	65	915
Elementary Occupations	2,130	520	2,650	2,130	520	2,650

Note: This dataset records the usual & sought occupation given by the claimant when registering for Job Seekers' Allowance. Values are rounded to the nearest 5 and therefore may not sum.

JSA CLAIMANT FLOWS – Nov 2011

Table 6

DISTRICT/TTWA	Male		Female		All Persons	
	Off Flow	On Flow	Off Flow	On Flow	Off Flow	On Flow
Cumbria	1,218	1,235	648	625	1,865	1,860
Allerdale	225	239	140	121	365	361
Barrow in Furness	243	237	104	131	347	368
Carlisle	308	335	173	159	481	494
Copeland	237	182	105	93	342	275
Eden	73	76	46	50	118	126
South Lakeland	132	166	80	70	212	236
Barrow in Furness TTWA	272	281	122	143	394	424
Carlisle TTWA	363	405	199	196	562	601
Kendal TTWA	103	122	62	58	165	181
Penrith & Appleby TTWA	68	72	41	47	109	118
Whitehaven TTWA	222	172	98	89	320	261
Workington & Keswick TTWA	205	207	134	104	339	311
Lancaster & Morecambe TTWA	386	441	199	193	585	634

Note: This dataset counts those who ended or started a claim during the previous month.

JSA CLAIMANT DESTINATIONS – Nov 2011

Table 7a

Reason for Leaving the Register - Number									
	Allerdale	Barrow	Carlisle	Copeland	Eden	South Lakeland	Cumbria	North West	United Kingdom
Found work	180	160	230	180	50	110	905	17,010	124,700
Increased work to 16+ hours/week	0	0	0	0	0	0	5	145	1,920
Gone abroad	10	5	10	10	0	5	40	1,080	9,320
Claimed Income Support	5	5	5	0	0	0	15	445	3,695
Claimed Incapacity Benefit	5	5	0	5	0	0	15	215	1,615
Claimed another benefit	0	10	5	5	0	0	25	420	3,675
Gone to full-time education	0	0	0	0	0	0	5	205	2,130
Gone onto approved training	0	0	0	0	0	0	0	15	155
Transfer to Govt-supported training	5	10	0	0	0	0	15	135	3,070
Retirement age reached	0	0	0	0	0	0	5	40	355
Automatic credits payable	0	0	0	0	0	0	0	0	5
Claimed back-to-work bonus	0	0	0	0	0	0	0	0	0
Gone to prison	5	5	10	5	0	0	30	325	2,460
Attending court	0	0	0	0	0	0	0	0	0
New claim review	0	0	5	0	0	0	5	285	2,335
Defective claim	0	0	0	0	0	0	0	310	1,800
Ceased claiming	5	15	10	10	5	20	55	785	6,950
Deceased	0	0	0	0	0	0	0	5	80
Not known	50	35	40	40	20	20	205	4,310	31,550
Failed to sign	70	70	130	60	30	40	400	10,785	86,535
Total	335	320	445	315	110	195	1,720	36,515	282,350

Values are rounded to the nearest 5.

Table 7b

Reason for Leaving the Register - Proportion									
	Allerdale	Barrow	Carlisle	Copeland	Eden	South Lakeland	Cumbria	North West	United Kingdom
Found work	82.1	73.3	83.6	84.1	86.0	78.8	80.9	79.4	75.9
Increased work to 16+ hours/week	0.5	0.9	0.0	0.5	0.0	0.0	0.4	0.7	1.2
Gone abroad	4.1	2.3	2.9	4.2	3.5	4.4	3.5	5.1	5.7
Claimed Income Support	3.2	1.4	1.1	0.5	1.8	0.0	1.3	2.1	2.3
Claimed Incapacity Benefit	1.8	1.8	0.7	2.8	0.0	0.7	1.5	1.0	1.0
Claimed another benefit	0.9	5.5	1.8	1.4	0.0	0.7	2.1	2.0	2.2
Gone to full-time education	0.9	0.5	0.4	0.0	1.8	0.0	0.4	1.0	1.3
Gone onto approved training	0.0	0.0	0.0	0.0	0.0	0.0	0.0	0.1	0.1
Transfer to Govt-supported training	1.4	3.7	0.7	0.0	0.0	0.7	1.3	0.6	1.9
Retirement age reached	0.9	0.5	0.0	0.0	0.0	0.0	0.3	0.2	0.2
Automatic credits payable	0.0	0.0	0.0	0.0	0.0	0.0	0.0	0.0	0.0
Claimed back-to-work bonus	0.0	0.0	0.0	0.0	0.0	0.0	0.0	0.0	0.0
Gone to prison	2.3	3.2	4.0	2.3	0.0	0.7	2.6	1.5	1.5
Attending court	0.0	0.0	0.0	0.0	0.0	0.0	0.0	0.0	0.0
New claim review	0.5	0.5	1.5	0.0	0.0	0.7	0.6	1.3	1.4
Defective claim	0.0	0.5	0.0	0.5	0.0	0.0	0.2	1.4	1.1
Ceased claiming	1.4	6.0	3.3	3.7	7.0	13.1	4.9	3.7	4.2
Deceased	0.0	0.0	0.0	0.0	0.0	0.0	0.0	0.0	0.0

Note: Proportions are of those who gave a reason for leaving the register (ie total does not include failed to sign or not known)

NOTIFIED VACANCIES BY INDUSTRY – Nov 2011

Table 8a

Industry	Area							Cumbria	
	Allerdale	Barrow	Carlisle	Copeland	Eden	South Lakeland	Cumbria	Monthly Change	Annual Change
Agriculture & Fishing	0	#	0	0	#	#	4	-8	-3
Energy & Water	0	0	0	0	#	0	#	0	0
Manufacturing	10	11	280	#	#	17	321	283	251
Construction	23	20	30	#	7	13	94	-39	54
Retail, Hotels & Restaurants	56	55	99	20	76	154	459	-77	-12
Transport & Comms	#	#	22	8	9	14	54	-54	-8
Business Activities & Finance	128	153	261	107	133	171	953	-235	-33
Public Administration	22	8	43	16	18	285	392	-27	-202
Other Service	7	36	12	5	3	13	76	-41	32
Total	246	284	746	160	249	669	2,355	-199	19
Total Monthly Change	-82	-12	-50	46	-23	-79	-199		
Total Annual Change	-149	34	17	-47	16	148	19		

NB: Reporting months are now on a standardised 4 1/3 basis in order to smooth out variations due to differing time periods.

LIVE UNFILLED VACANCIES BY INDUSTRY – Nov 2011

Table 8b

Industry	Area							Cumbria	
	Allerdale	Barrow	Carlisle	Copeland	Eden	South Lakeland	Cumbria	Monthly Change	Annual Change
Agriculture & Fishing	0	0	0	0	1	2	3	-8	0
Energy & Water	0	0	0	0	0	0	0	-1	-50
Manufacturing	3	3	254	2	0	7	269	231	227
Construction	12	6	25	2	5	13	63	-54	41
Retail, Hotels & Restaurants	53	26	72	85	38	108	382	-66	13
Transport & Comms	1	0	35	2	8	21	67	-12	22
Business Activities & Finance	80	99	212	75	70	120	656	-209	-18
Public Administration	16	2	34	15	9	79	155	-42	-376
Other Service	1	16	73	3	2	11	106	6	72
Total	166	152	705	184	133	361	1,701	-155	-69
Total Monthly Change	-56	-81	103	21	-67	-75	-155		
Total Annual Change	-152	-68	230	7	-73	-13	-69		

Note: The JobCentre Plus vacancies dataset does not provide comprehensive measures relating to all vacancies in the economy. The proportion of vacancies which are notified by employers varies over time, according to the occupation and industry of the area and labour market conditions. Notified vacancies are those placed with JobCentre Plus during the month, Live Unfilled vacancies are those for which a jobseeker can actively apply on the day the count is taken.

JSA CLAIMANT TO VACANCY RATIO - Nov 2011

Vacancy data can be used in conjunction with the claimant count to calculate a simple 'claimant to vacancy ratio'. This uses the number of live unfilled vacancies in a month, together with the number of claimants. A claimant/vacancy figure of more than 1 means that there are more claimants than live vacancies.

Table 9

	Claimant count	Live vacancies	Claimant/vacancy ratio
Great Britain	1,499,383	317,562	4.72
Cumbria	8,728	1,701	5.13
Allerdale	1,947	166	11.73
Barrow in Furness	1,880	152	12.37
Carlisle	2,034	705	2.89
Copeland	1,630	184	8.86
Eden	389	133	2.92
South Lakeland	848	361	2.35

Note: The JobCentre Plus vacancies dataset does not provide comprehensive measures relating to all vacancies in the economy. The proportion of vacancies which are notified by employers varies over time, according to the occupation and industry of the area and labour market conditions. Notified vacancies are those placed with JobCentre Plus during the month, Live Unfilled vacancies are those for which a jobseeker can actively apply on the day the count is taken.

For definitions of areas or for further information, please contact
Ginny Murphy, Economic Intelligence Officer, Cumbria County Council
Tel: 01228 226753 E-mail: ginny.murphy@cumbria.gov.uk

Copies of previous releases, together with other labour market and economic data, can be found on the following website: www.cumbriaobservatory.org.uk

Labour Market Briefing

December 2011

RESIDENCE-BASED JSA CLAIMANT COUNTS & RATES – Nov 2011

Locally Defined Areas

	Locally Defined Areas									
	Male		Female		All Persons		All Persons			
	No	Rate	No	Rate	No	Rate	Monthly Change		Annual Change	
	No	Rate	No	Rate	No	Rate	No	Rate	No	Rate
Key Service Centres										
Alston KSC	23	3.3	12	1.8	35	2.6	0	0.0	8	0.6
Ambleside KSC	10	0.9	6	0.5	16	0.7	2	0.1	-4	-0.2
Appleby KSC	15	1.8	8	0.9	23	1.3	-1	-0.1	2	0.1
Aspatria KSC	46	4.3	24	2.2	70	3.3	-6	-0.3	3	0.1
Barrow KSC	1,144	6.2	536	2.9	1,680	4.6	26	0.1	336	0.9
Brampton KSC	63	4.8	21	1.6	84	3.2	2	0.1	2	0.1
Brough KSC	7	1.7	3	0.7	10	1.2	2	0.2	2	0.2
Carlisle KSC	1,156	5.0	537	2.3	1,693	3.7	11	0.0	262	0.6
Cleator Moor KSC	150	6.8	66	3.0	216	4.9	0	0.0	7	0.2
Cockermouth KSC	73	3.0	30	1.2	103	2.1	0	0.0	5	0.1
Dalton in Furness KSC	134	3.3	66	1.6	200	2.4	-5	-0.1	36	0.4
Egremont KSC	134	5.2	57	2.3	191	3.7	-20	-0.4	-5	-0.1
Grange KSC	11	1.1	9	0.9	20	1.0	-3	-0.1	3	0.1
Grasmere KSC	#	#	#	#	4	0.4	1	0.1	-3	-0.3
Hawkshead KSC	5	0.9	4	0.8	9	0.9	2	0.2	-1	-0.1
Kendal KSC	207	2.4	97	1.1	304	1.8	7	0.0	65	0.4
Keswick KSC	27	1.7	20	1.3	47	1.5	3	0.1	3	0.1
Kirkby Lonsdale KSC	7	1.1	#	#	9	0.7	1	0.1	2	0.1
Kirkby Stephen KSC	12	1.6	4	0.6	16	1.1	1	0.1	-9	-0.6
Lazonby KSC	5	1.1	3	0.6	8	0.9	1	0.1	0	0.0
Longtown KSC	49	3.5	15	1.2	64	2.4	14	0.5	18	0.7
Maryport KSC	282	7.7	109	2.9	391	5.2	-16	-0.2	42	0.6
Millom KSC	133	4.7	52	2.3	185	3.6	0	0.0	39	0.8
Milnthorpe KSC	9	1.5	6	1.0	15	1.3	-3	-0.3	-2	-0.2
Penrith KSC	105	2.3	59	1.3	164	1.8	0	0.0	21	0.2
Sedbergh KSC	10	0.8	7	0.7	17	0.7	1	0.0	6	0.3
Silloth KSC	42	4.7	14	1.5	56	3.0	8	0.4	13	0.7
Ulverston KSC	137	3.9	73	2.1	210	3.0	2	0.0	49	0.7
Whitehaven KSC	444	5.4	195	2.4	639	3.9	-33	-0.2	89	0.5
Wigton KSC	63	3.8	35	2.0	98	2.8	8	0.2	25	0.7
Windermere KSC	40	1.5	15	0.6	55	1.0	6	0.1	-3	-0.1
Workington KSC	556	7.3	245	3.2	801	5.2	-24	-0.2	135	0.9
Housing Market Areas										
Alston Moor HMA	23	3.3	12	1.8	35	2.6	0	0.0	8	0.6
Barrow HMA	1,278	5.7	602	2.7	1,880	4.2	21	0.0	372	0.8
Carlisle HMA	1,171	5.0	546	2.3	1,717	3.6	11	0.0	270	0.6
Central Lakes HMA	67	1.1	32	0.5	99	0.8	11	0.1	-10	-0.1
Cockermouth HMA	73	3.0	30	1.2	103	2.1	0	0.0	5	0.1
Eden Valley North HMA	145	1.8	81	1.0	226	1.4	1	0.0	23	0.1
Eden Valley South HMA	70	1.3	32	0.6	102	0.9	0	0.0	-6	-0.1
Kendal HMA	207	2.4	97	1.1	304	1.8	7	0.0	65	0.4
Millom HMA	133	4.7	52	2.3	185	3.6	0	0.0	39	0.8
North Lakes - East HMA	14	0.8	12	0.7	26	0.7	-2	-0.1	-5	-0.1
North Lakes - West HMA	46	1.5	32	1.0	78	1.2	9	0.1	8	0.1
Rural Carlisle East HMA	170	2.3	81	1.1	251	1.7	8	0.1	31	0.2
Rural Carlisle West HMA	45	1.7	21	0.8	66	1.3	5	0.1	-5	-0.1
Rural Kendal HMA	73	1.1	34	0.5	107	0.8	-2	0.0	8	0.1
Sedbergh HMA	10	0.8	7	0.7	17	0.7	1	0.0	6	0.3
Ulverston and Furness HMA	185	3.1	89	1.5	274	2.3	5	0.0	55	0.5
West Lakes HMA	44	1.8	17	0.7	61	1.3	-6	-0.1	-20	-0.4
Whitehaven HMA	956	5.4	428	2.5	1,384	4.0	-60	-0.2	136	0.4
Wigton HMA	92	2.3	55	1.4	147	1.9	8	0.1	29	0.4
Workington and Maryport HMA	1,140	5.8	479	2.4	1,619	4.1	-30	-0.1	228	0.6

Labour Market Briefing December 2011

Locally Defined Areas										
	Male		Female		All Persons		All Persons			
	No	Rate	No	Rate	No	Rate	Monthly Change		Annual Change	
							No	Rate	No	Rate
Children's' Services Local Delivery Project Areas										
Alston CS LDP	23	3.3	12	1.8	35	2.6	0	0.0	8	0.6
Brampton CS LDP	185	2.3	90	1.1	275	1.7	8	0.0	39	0.2
Cleator Moor & Egremont CS LDP	448	4.8	189	2.1	637	3.5	-11	-0.1	20	0.1
Carlisle North CS LDP	103	2.8	50	1.3	153	2.1	1	0.0	49	0.7
Carlisle South CS LDP	557	5.8	273	2.8	830	4.2	20	0.1	140	0.7
Carlisle West CS LDP	508	4.9	218	2.1	726	3.5	-5	0.0	65	0.3
Cockermouth & Keswick CS LDP	143	2.1	73	1.1	216	1.6	5	0.0	9	0.1
Dalston CS LDP	33	1.7	17	0.9	50	1.3	0	0.0	3	0.1
Furness CS LDP	1,463	5.1	691	2.4	2,154	3.8	26	0.0	427	0.8
Grange CS LDP	27	1.1	23	0.9	50	1.0	1	0.0	6	0.1
Kendal CS LDP	228	2.2	103	1.0	331	1.6	6	0.0	65	0.3
Kirkby Lonsdale CS LDP	7	1.1	#	#	9	0.7	1	0.1	2	0.1
Lakes CS LDP	21	0.8	14	0.5	35	0.6	5	0.1	-8	-0.1
Maryport CS LDP	317	6.8	124	2.6	441	4.7	-19	-0.2	35	0.4
Middle Eden CS LDP	33	1.1	22	0.7	55	0.9	-2	0.0	-3	0.0
Milnthorpe CS LDP	45	1.0	26	0.6	71	0.8	-2	0.0	6	0.1
North Allerdale CS LDP	230	2.9	127	1.6	357	2.2	22	0.1	75	0.5
Penrith CS LDP	161	1.6	89	0.9	250	1.2	-5	0.0	14	0.1
Sedbergh CS LDP	10	0.8	7	0.7	17	0.7	1	0.0	6	0.3
South Copeland CS LDP	146	3.9	59	1.9	205	3.0	-4	-0.1	31	0.5
Upper Eden CS LDP	35	1.5	14	0.6	49	1.1	6	0.1	1	0.0
Whitehaven CS LDP	539	5.5	249	2.6	788	4.0	-51	-0.3	104	0.5
Windermere CS LDP	45	1.3	16	0.5	61	0.9	3	0.0	-2	0.0
Workington CS LDP	661	6.8	272	2.8	933	4.8	-21	-0.1	151	0.8
Health Areas										
Carlisle City South (Health)	1,053	5.4	487	2.5	1,540	4.0	10	0.0	213	0.5
Cockermouth & Keswick (Health)	143	2.1	73	1.1	216	1.6	5	0.0	9	0.1
Maryport (Health)	317	6.8	124	2.6	441	4.7	-19	-0.2	35	0.4
Mid Copeland (Health)	448	4.8	189	2.1	637	3.5	-11	-0.1	20	0.1
North Allerdale (Health)	230	2.9	127	1.6	357	2.2	22	0.1	75	0.5
South Copeland (Health)	146	3.9	59	1.9	205	3.0	-4	-0.1	31	0.5
Whitehaven (Health)	539	5.5	249	2.6	788	4.0	-51	-0.3	104	0.5
Workington (Health)	661	6.8	272	2.8	933	4.8	-21	-0.1	151	0.8
West Cumbria Partnership Areas										
Cleator Moor WCP	230	5.8	100	2.6	330	4.2	-1	0.0	25	0.3
Cockermouth WCP	111	2.3	49	1.0	160	1.7	1	0.0	2	0.0
Egremont WCP	191	4.6	80	2.0	271	3.3	-12	-0.1	5	0.1
Keswick WCP	32	1.5	24	1.2	56	1.3	4	0.1	7	0.2
Maryport WCP	317	6.8	124	2.6	441	4.7	-19	-0.2	35	0.4
Mid Copeland WCP	27	2.2	9	0.8	36	1.5	2	0.1	-10	-0.4
Millom WCP	146	3.9	59	1.9	205	3.0	-4	-0.1	31	0.5
North Allerdale WCP	230	2.9	127	1.6	357	2.2	22	0.1	75	0.5
Whitehaven WCP	539	5.5	249	2.6	788	4.0	-51	-0.3	104	0.5
Workington WCP	661	6.8	272	2.8	933	4.8	-21	-0.1	151	0.8
Other Areas										
Lake District National Park	206	1.3	102	0.7	308	1.0	6	0.0	-23	-0.1
Keswick Market Town Initiative	32	1.5	24	1.2	56	1.3	4	0.1	7	0.2
Longtown Market Town Initiative	56	2.7	19	1.0	75	1.9	13	0.3	13	0.3
Penrith Market Town Initiative	175	1.5	99	0.9	274	1.2	-5	0.0	8	0.0
Ulverston Market Town Initiative	170	3.2	85	1.6	255	2.4	6	0.1	52	0.5

NB: Counts of less than 3 are denoted by a #. Wards are Census 2003 wards.

Note 1: Rates are of the Working Age Population.

Note 2: Please note that the definition of working age is now 16-65 for both males and females.

RESIDENCE-BASED JSA CLAIMANT COUNTS & RATES – Nov 2011

Wards

WARD	Male		Female		All Persons		All Persons			
	No	Rate	No	Rate	No	Rate	Monthly Change		Annual Change	
							No	Rate	No	Rate
ALLERDALE										
All Saints	48	3.4	24	1.6	72	2.4	0	0.0	6	0.2
Aspatria	46	4.3	24	2.2	70	3.3	-6	-0.3	3	0.1
Boltons	9	1.6	6	1.1	15	1.3	4	0.4	3	0.3
Broughton St Bridget's	27	2.0	12	0.9	39	1.5	4	0.1	-5	-0.2
Christchurch	25	2.5	6	0.6	31	1.6	0	0.0	-1	-0.1
Clifton	26	5.3	6	1.2	32	3.2	-4	-0.4	-6	-0.6
Crummock	5	1.0	#	#	7	0.7	1	0.1	-2	-0.2
Dalton	6	1.2	5	0.9	11	1.0	-4	-0.4	4	0.4
Derwent Valley	5	0.9	4	0.8	9	0.9	1	0.1	4	0.4
Ellen	35	3.5	15	1.5	50	2.5	-3	-0.1	-7	-0.3
Ellenborough	69	6.0	27	2.3	96	4.1	-6	-0.3	6	0.3
Ewanrigg	96	9.6	48	4.4	144	6.9	2	0.1	20	1.0
Flimby	40	7.3	12	2.2	52	4.7	1	0.1	3	0.3
Harrington	37	3.9	10	1.1	47	2.5	-2	-0.1	-3	-0.2
Holme	10	1.9	13	2.6	23	2.2	-1	-0.1	0	0.0
Keswick	27	1.7	20	1.3	47	1.5	3	0.1	3	0.1
Marsh	9	1.7	3	0.6	12	1.2	1	0.1	4	0.4
Moorclose	119	8.7	52	3.4	171	5.9	-5	-0.2	31	1.1
Moss Bay	166	12.8	76	5.4	242	8.9	-9	-0.3	37	1.4
Netherhall	77	7.9	22	2.2	99	5.1	-13	-0.7	13	0.7
Seaton	79	5.1	21	1.3	100	3.2	7	0.2	22	0.7
Silloth	42	4.7	14	1.5	56	3.0	8	0.4	13	0.7
Solway	17	3.3	9	1.7	26	2.5	7	0.7	15	1.5
St John's	73	4.3	29	1.8	102	3.1	-4	-0.1	6	0.2
St Michael's	149	8.4	69	4.3	218	6.5	-5	-0.1	57	1.7
Stainburn	12	2.1	9	1.6	21	1.9	1	0.1	7	0.6
Wampool	6	1.1	9	1.8	15	1.4	0	0.0	0	0.0
Warnell	8	1.3	4	0.7	12	1.0	1	0.1	3	0.3
Waver	6	1.0	4	0.7	10	0.8	-2	-0.2	-3	-0.3
Wharrels	14	2.7	6	1.3	20	2.0	2	0.2	12	1.2
Wigton	63	3.8	35	2.0	98	2.8	8	0.2	25	0.7
BARROW										
Barrow Island	118	13.3	45	5.7	163	9.7	-5	-0.3	24	1.4
Central	210	12.7	102	6.1	312	9.4	10	0.3	60	1.8
Dalton North	64	3.0	23	1.1	87	2.0	-4	-0.1	10	0.2
Dalton South	70	3.6	43	2.2	113	2.9	-1	0.0	26	0.7
Hawcoat	28	2.0	8	0.6	36	1.3	3	0.1	13	0.5
Hindpool	172	10.1	66	3.8	238	6.9	4	0.1	22	0.6
Newbarns	80	4.3	43	2.3	123	3.3	-2	-0.1	45	1.2
Ormsgill	154	8.1	75	3.7	229	5.8	13	0.3	40	1.0
Parkside	64	3.6	35	2.0	99	2.8	-3	-0.1	27	0.8
Risedale	123	6.8	58	3.4	181	5.1	-1	0.0	34	1.0
Roosecote	63	3.3	50	2.5	113	2.9	5	0.1	43	1.1
Walney North	69	4.3	29	1.7	98	3.0	-1	0.0	21	0.6
Walney South	63	3.5	25	1.4	88	2.5	3	0.1	7	0.2

NB: Counts of less than 3 are denoted by a #. Wards are Census 2003 wards.

Note 1: Rates are of the Working Age Population.

Note 2: Please note that the definition of working age is now 16-65 for both males and females.

Labour Market Briefing

December 2011

WARD	Male		Female		All Persons		All Persons			
							Monthly Change		Annual Change	
	No	Rate	No	Rate	No	Rate	No	Rate		
CARLISLE										
Belah	70	3.7	25	1.3	95	2.5	9	0.2	34	0.9
Belle Vue	86	4.8	50	2.5	136	3.6	-9	-0.2	21	0.6
Botcherby	121	6.4	56	2.7	177	4.5	5	0.1	11	0.3
Brampton	63	4.8	21	1.6	84	3.2	2	0.1	2	0.1
Burgh	12	1.7	4	0.6	16	1.2	5	0.4	-8	-0.6
Castle	147	6.5	56	2.8	203	4.8	-4	-0.1	-3	-0.1
Currock	111	5.4	62	3.1	173	4.3	9	0.2	32	0.8
Dalston	33	1.7	17	0.9	50	1.3	0	0.0	3	0.1
Denton Holme	99	4.7	47	2.2	146	3.4	7	0.2	-1	0.0
Great Corby and Geltsdale	12	1.7	4	0.6	16	1.1	-6	-0.4	-5	-0.4
Harraby	90	4.7	32	1.7	122	3.2	5	0.1	15	0.4
Hayton	15	2.5	9	1.5	24	2.0	0	0.0	8	0.7
Irthing	11	1.8	5	0.8	16	1.3	-3	-0.2	3	0.2
Longtown & Rockcliffe	49	3.5	15	1.2	64	2.4	14	0.5	18	0.7
Lyne	7	1.1	4	0.6	11	0.9	-1	-0.1	-5	-0.4
Morton	115	7.2	38	2.3	153	4.7	5	0.2	37	1.1
St Aidans	105	4.8	66	3.1	171	4.0	-7	-0.2	49	1.1
Stanwix Rural	12	0.8	19	1.3	31	1.1	1	0.0	7	0.2
Stanwix Urban	33	1.8	25	1.4	58	1.6	-8	-0.2	15	0.4
Upperby	130	7.9	57	3.3	187	5.6	8	0.2	33	1.0
Wetheral	16	1.2	13	0.9	29	1.1	1	0.0	11	0.4
Yewdale	49	2.6	23	1.2	72	1.9	-9	-0.2	19	0.5
COPELAND										
Arlecdon	12	2.2	7	1.4	19	1.8	4	0.4	-2	-0.2
Beckermet	44	4.7	18	2.0	62	3.4	9	0.5	8	0.4
Bootle	8	2.1	4	1.0	12	1.5	-2	-0.3	-3	-0.4
Bransty	36	2.1	27	1.6	63	1.9	-5	-0.1	13	0.4
Cleator Moor North	89	6.5	36	2.7	125	4.7	2	0.1	3	0.1
Cleator Moor South	61	7.3	30	3.4	91	5.3	-2	-0.1	4	0.2
Distinguon	87	6.9	44	3.4	131	5.1	-16	-0.6	28	1.1
Egremont North	71	5.2	32	2.3	103	3.7	-1	0.0	-7	-0.3
Egremont South	63	5.1	25	2.3	88	3.8	-19	-0.8	2	0.1
Ennerdale	4	1.1	#	#	5	0.7	-4	-0.6	-2	-0.3
Frizington	64	7.6	26	3.2	90	5.4	-1	-0.1	22	1.3
Gosforth	5	1.2	4	1.0	9	1.1	-4	-0.5	-3	-0.4
Harbour	108	7.7	37	3.2	145	5.7	-7	-0.3	30	1.2
Haverigg	16	1.7	7	1.8	23	1.7	0	0.0	10	0.7
Hensingham	72	5.7	25	1.8	97	3.7	-5	-0.2	-6	-0.2
Hillcrest	13	1.5	10	1.2	23	1.4	-7	-0.4	8	0.5
Holborn Hill	50	6.6	15	1.9	65	4.2	-3	-0.2	15	1.0
Kells	35	4.7	21	2.7	56	3.7	-4	-0.3	19	1.2
Millom Without	5	1.0	3	0.7	8	0.8	-2	-0.2	-5	-0.5
Mirehouse	102	7.6	34	2.4	136	4.9	-7	-0.3	7	0.3
Moresby	8	2.1	10	2.3	18	2.2	-2	-0.2	-13	-1.6
Newtown	67	6.1	30	2.9	97	4.5	3	0.1	14	0.7
Sandwith	78	9.7	41	4.8	119	7.2	2	0.1	18	1.1
Seascale	22	2.6	5	0.6	27	1.7	6	0.4	-7	-0.4
St Bees	13	2.2	5	0.9	18	1.6	-1	-0.1	2	0.2

NB: Counts of less than 3 are denoted by a #. Wards are Census 2003 wards.

Note 1: Rates are of the Working Age Population.

Note 2: Please note that the definition of working age is now 16-65 for both males and females.

Labour Market Briefing

December 2011

WARD	Male		Female		All Persons		All Persons			
							Monthly Change		Annual Change	
	No	Rate	No	Rate	No	Rate	No	Rate		
EDEN										
Alston Moor	23	3.3	12	1.8	35	2.6	0	0.0	8	0.6
Appleby (Appleby)	4	1.2	4	1.2	8	1.2	-3	-0.4	-1	-0.1
Appleby (Bongate)	11	2.1	4	0.7	15	1.4	2	0.2	3	0.3
Askham	4	0.9	5	1.1	9	1.0	-4	-0.4	0	0.0
Brough	7	1.7	3	0.7	10	1.2	2	0.2	2	0.2
Crosby Ravensworth	4	0.9	#	#	5	0.5	-1	-0.1	0	0.0
Dacre	4	1.0	#	#	6	0.7	-1	-0.1	-2	-0.2
Eamont	7	1.8	#	#	8	1.0	-2	-0.2	-1	-0.1
Greystoke	3	0.7	#	#	5	0.6	2	0.2	2	0.2
Hartside	5	1.4	5	1.4	10	1.4	2	0.3	3	0.4
Hesket	5	0.5	5	0.5	10	0.5	-3	-0.2	-6	-0.3
Kirkby Stephen	12	1.6	4	0.6	16	1.1	1	0.1	-9	-0.6
Kirkby Thore	7	1.4	4	0.8	11	1.1	-2	-0.2	-7	-0.7
Kirkoswald	8	1.6	#	#	10	1.1	0	0.0	3	0.3
Langwathby	5	1.0	#	#	7	0.7	0	0.0	0	0.0
Lazonby	5	1.1	3	0.6	8	0.9	1	0.1	0	0.0
Long Marton	0	0.0	3	0.8	3	0.4	0	0.0	#	0.1
Morland	#	#	#	#	3	0.4	0	0.0	-2	-0.2
Orton with Tebay	6	1.3	4	0.8	10	1.1	0	0.0	3	0.3
Penrith Carleton	3	0.7	5	1.0	8	0.9	0	0.0	3	0.3
Penrith East	20	2.5	4	0.5	24	1.5	-5	-0.3	5	0.3
Penrith North	30	2.4	14	1.2	44	1.8	-2	-0.1	5	0.2
Penrith Pategill	6	1.8	11	2.7	17	2.3	0	0.0	6	0.8
Penrith South	20	2.9	13	1.9	33	2.4	-1	-0.1	9	0.7
Penrith West	26	2.4	12	1.2	38	1.8	8	0.4	-7	-0.3
Ravenstonedale	5	1.7	#	#	6	1.0	#	0.7	2	0.3
Shap	5	1.0	#	#	6	0.7	-2	-0.2	-7	-0.8
Skelton	8	1.6	3	0.7	11	1.2	2	0.2	4	0.4
Ullswater	#	#	4	0.8	6	0.6	2	0.2	0	0.0
Warcop	5	1.2	#	#	7	0.8	-1	-0.1	3	0.3

NB: Counts of less than 3 are denoted by a #. Wards are Census 2003 wards.

Note 1: Rates are of the Working Age Population.

Note 2: Please note that the definition of working age is now 16-65 for both males and females.

Labour Market Briefing December 2011

WARD	Male		Female		All Persons		All Persons			
	No	Rate	No	Rate	No	Rate	Monthly Change		Annual Change	
							No	Rate	No	Rate
SOUTH LAKELAND										
Arnside & Beetham	12	1.1	3	0.3	15	0.7	1	0.0	-1	0.0
Broughton	15	2.2	4	0.6	19	1.4	-1	-0.1	3	0.2
Burneside	6	1.0	#	#	7	0.6	-2	-0.2	-4	-0.3
Burton & Holme	5	0.6	4	0.5	9	0.5	0	0.0	2	0.1
Cartmel	3	0.6	5	1.0	8	0.8	0	0.0	-1	-0.1
Coniston	4	0.7	#	#	6	0.5	0	0.0	0	0.0
Crake Valley	7	1.1	#	#	9	0.8	3	0.3	-1	-0.1
Crooklands	6	0.9	3	0.4	9	0.6	-2	-0.1	-2	-0.1
Grange	11	1.1	9	0.9	20	1.0	-3	-0.1	3	0.1
Hawkshead	5	0.9	4	0.8	9	0.9	2	0.2	-1	-0.1
Holker	7	1.3	6	1.2	13	1.3	4	0.4	3	0.3
Kendal Castle	6	1.3	3	0.6	9	1.0	0	0.0	-6	-0.6
Kendal Far Cross	18	2.6	5	0.7	23	1.6	3	0.2	1	0.1
Kendal Fell	28	4.6	11	1.9	39	3.3	-2	-0.2	5	0.4
Kendal Glebelands	6	1.1	5	0.9	11	1.0	3	0.3	2	0.2
Kendal Heron Hill	10	1.7	#	#	12	1.0	-2	-0.2	4	0.3
Kendal Highgate	23	4.2	17	3.5	40	3.8	3	0.3	16	1.5
Kendal Kirkland	21	3.4	9	1.4	30	2.4	-2	-0.2	5	0.4
Kendal Mintsfeet	21	3.1	11	1.7	32	2.4	3	0.2	3	0.2
Kendal Nether	5	1.0	4	0.8	9	0.9	3	0.3	4	0.4
Kendal Oxenholme	22	2.8	8	1.0	30	1.9	-3	-0.2	13	0.8
Kendal Parks	6	0.8	6	0.8	12	0.8	4	0.3	4	0.3
Kendal Stonecross	9	1.8	3	0.6	12	1.2	-1	-0.1	1	0.1
Kendal Strickland	9	1.3	4	0.6	13	1.0	-4	-0.3	1	0.1
Kendal Underley	23	3.5	9	1.3	32	2.4	2	0.1	12	0.9
Kirkby Lonsdale	7	1.1	#	#	9	0.7	1	0.1	2	0.1
Lakes Ambleside	10	0.9	6	0.5	16	0.7	2	0.1	-4	-0.2
Lakes Grasmere	#	#	#	#	4	0.4	1	0.1	-3	-0.3
Levens	4	0.9	7	1.4	11	1.2	2	0.2	5	0.5
Low Furness & Swarthmoor	26	2.2	10	0.8	36	1.4	1	0.0	4	0.2
Lyth Valley	9	1.4	3	0.4	12	0.9	0	0.0	4	0.3
Milnthorpe	9	1.5	6	1.0	15	1.3	-3	-0.3	-2	-0.2
Natland	6	1.1	#	#	8	0.7	1	0.1	1	0.1
Sedbergh	10	0.8	7	0.7	17	0.7	1	0.0	6	0.3
Staveley-in-Cartmel	6	1.1	3	0.6	9	0.9	0	0.0	1	0.1
Staveley-in-Westmorland	5	0.8	#	#	6	0.5	-3	-0.2	1	0.1
Ulverston Central	21	3.7	16	2.9	37	3.3	2	0.2	0	0.0
Ulverston East	45	6.5	22	3.1	67	4.8	12	0.9	14	1.0
Ulverston North	23	3.8	13	2.1	36	2.9	2	0.2	24	2.0
Ulverston South	15	2.9	10	1.9	25	2.4	-3	-0.3	9	0.8
Ulverston Town	22	3.8	9	1.7	31	2.8	-4	-0.4	-5	-0.4
Ulverston West	11	2.1	3	0.6	14	1.4	-7	-0.7	7	0.7
Whinfell	9	1.2	3	0.4	12	0.8	0	0.0	3	0.2
Windermere Applethwaite	8	1.1	6	1.0	14	1.0	2	0.1	-1	-0.1
Windermere Bowness North	11	1.9	4	0.7	15	1.3	3	0.3	2	0.2
Windermere Bowness South	9	1.3	#	#	11	0.8	-2	-0.1	3	0.2
Windermere Town	12	1.6	3	0.4	15	1.0	3	0.2	-7	-0.5

NB: Counts of less than 3 are denoted by a #. Wards are Census 2003 wards.

Note 1: Rates are of the Working Age Population.

Note 2: Please note that the definition of working age is now 16-65 for both males and females.