

The October 2011 unemployment and vacancy figures were released by the Office for National Statistics on 16th November 2011. The JSA Claimant Count was taken on 13th October 2011 and the vacancy count was for the month to 7th October 2011.

The JSA Claimant Count & Rate (not seasonally adjusted)

The JSA claimant *count* in Cumbria fell by 86 between Sept and Oct 2011 to 8,743. This non-seasonally adjusted figure also fell both regionally and nationally (see “other measures of joblessness” for the seasonally adjusted national figure). The claimant count rose by 2 in Allerdale and by 25 in Barrow but fell in the other 4 districts. Between the same two months last year, the count in Cumbria fell by 70 people. The JSA claimant *rate* in Cumbria in Oct 2011 was unchanged at 2.8%. The rate was also unchanged nationally (3.9%) and was down 0.1 regionally (4.4%).

Compared to a year ago, the JSA claimant count in Cumbria is 1,218 higher, a rise of 16.2% over the year. It is also higher nationally than a year ago but by a smaller margin, 10.3%. The claimant *rate* in Cumbria is up by 0.4 compared to a year ago, the national rate is also up by 0.4 compared to a year ago.

A third of all claimants, 3,025, were young people aged 16-24, a countywide fall of 5 from last month. However this net fall countywide is due to a drop of 50 in Carlisle which compensates for rises in all the other districts. Overall, 6.0% of all people in this age group are claiming JSA, lower than the national average of 6.4% but more than double the rate for the population as a whole in Cumbria. JSA Claimant rates for young people in Allerdale (7.8%), Barrow (9.1%) and Copeland (9.1%) were higher than nationally.

Other Measures of Joblessness

These figures are often quoted by the national press but are not available for local areas. They are provided here for information but should not directly be compared with those above as the methodology used to compile them is different.

The jobless total for the UK (claimants and non claimants looking for work) rose by 129,000 over the quarter ending Sept 2011 to 2.62 million, the highest it's been since September 1994. The jobless rate rose by 0.4 over the quarter to 8.3%. Similar figures using the wider definition of joblessness are not available at local level.

The seasonally adjusted claimant count for the UK was 1,598,400 in Oct 2011, up by 5,300 over the previous month. Comparable seasonally adjusted figures are not available at local level.

Notified Vacancies

The number of new vacancies notified to JobCentre Plus in Cumbria in the month to 7th October 2011 was 2,554 a rise of 223 compared to the number notified in September but 225 fewer than were notified in the same month last year.

JSA Claimant to Vacancy Ratio

The ratio of claimants to live unfilled vacancies in Cumbria was 4.71 in Oct 2011 (GB 4.59). The ratio was especially high in Copeland (10.40).

RESIDENCE-BASED CLAIMANT COUNTS & RATES – Oct 2011

Table 1

National, County, Districts, Travel to Work Areas & Parliamentary Constituencies										
	Male		Female		All Persons		All Persons			
	No	Rate	No	Rate	No	Rate	Monthly Change		Annual Change	
	No	Rate	No	Rate	No	Rate	No	Rate	No	Rate
Cumbria	5,956	3.8	2,787	1.8	8,743	2.8	-86	0.0	1,218	0.4
North West	133,463	6.0	62,875	2.8	196,338	4.4	-2,276	-0.1	21,495	0.5
United Kingdom	1,035,535	5.1	526,966	2.6	1,562,501	3.9	-16,108	0.0	145,716	0.4
Great Britain	993,180	5.1	509,348	2.6	1,502,528	3.8	-14,669	0.0	143,246	0.4
<i>District</i>										
Allerdale	1,343	4.6	617	2.1	1,960	3.4	2	0.0	277	0.5
Barrow in Furness	1,279	5.7	580	2.6	1,859	4.2	25	0.1	357	0.8
Carlisle	1,349	4.0	661	2.0	2,010	3.0	-93	-0.1	212	0.3
Copeland	1,190	5.2	506	2.3	1,696	3.8	-3	0.0	263	0.6
Eden	256	1.6	134	0.8	390	1.2	-3	0.0	22	0.1
South Lakeland	539	1.7	289	0.9	828	1.3	-14	0.0	87	0.1
<i>Travel to Work Area</i>										
Barrow in Furness	1,452	5.0	676	2.3	2,128	3.7	25	0.0	403	0.7
Carlisle	1,593	3.7	784	1.8	2,377	2.8	-105	-0.1	238	0.3
Kendal	366	1.4	193	0.7	559	1.1	-14	0.0	41	0.1
Penrith & Appleby	231	1.5	116	0.8	347	1.2	-2	0.0	14	0.0
Whitehaven	1,122	5.0	471	2.2	1,593	3.6	-6	0.0	224	0.5
Workington & Keswick	1,271	5.1	581	2.3	1,852	3.7	16	0.0	293	0.6
Lancaster & Morecambe	1,941	4.1	900	1.9	2,841	3.0	-68	-0.1	337	0.4
<i>Parliamentary Constituency</i>										
Barrow & Furness	1,452	5.0	676	2.3	2,128	3.7	25	0.0	403	0.7
Carlisle	1,187	4.5	584	2.2	1,771	3.3	-74	-0.1	202	0.4
Copeland	1,228	4.7	541	2.1	1,769	3.4	6	0.0	283	0.5
Penrith & The Border	486	1.9	244	1.0	730	1.4	-31	-0.1	48	0.1
Westmorland & Lonsdale	366	1.4	193	0.7	559	1.1	-14	0.0	41	0.1
Workington	1,237	5.1	549	2.3	1,786	3.7	2	0.0	241	0.5

NB: Rates are of the resident working age population

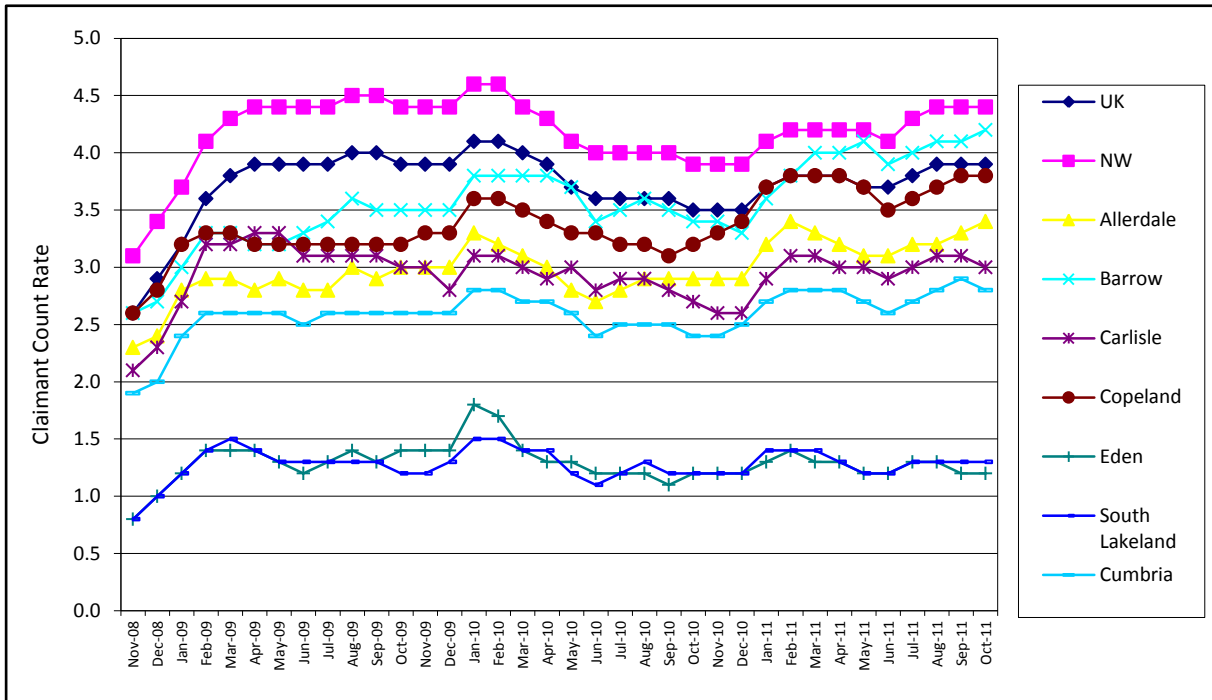
Note 1: From the May 2010 Briefing onwards, Parliamentary Constituencies are the 2010 boundaries.

Note 2: Please note that the definition of working age is now 16-65 for both males and females.

Labour Market Briefing November 2011

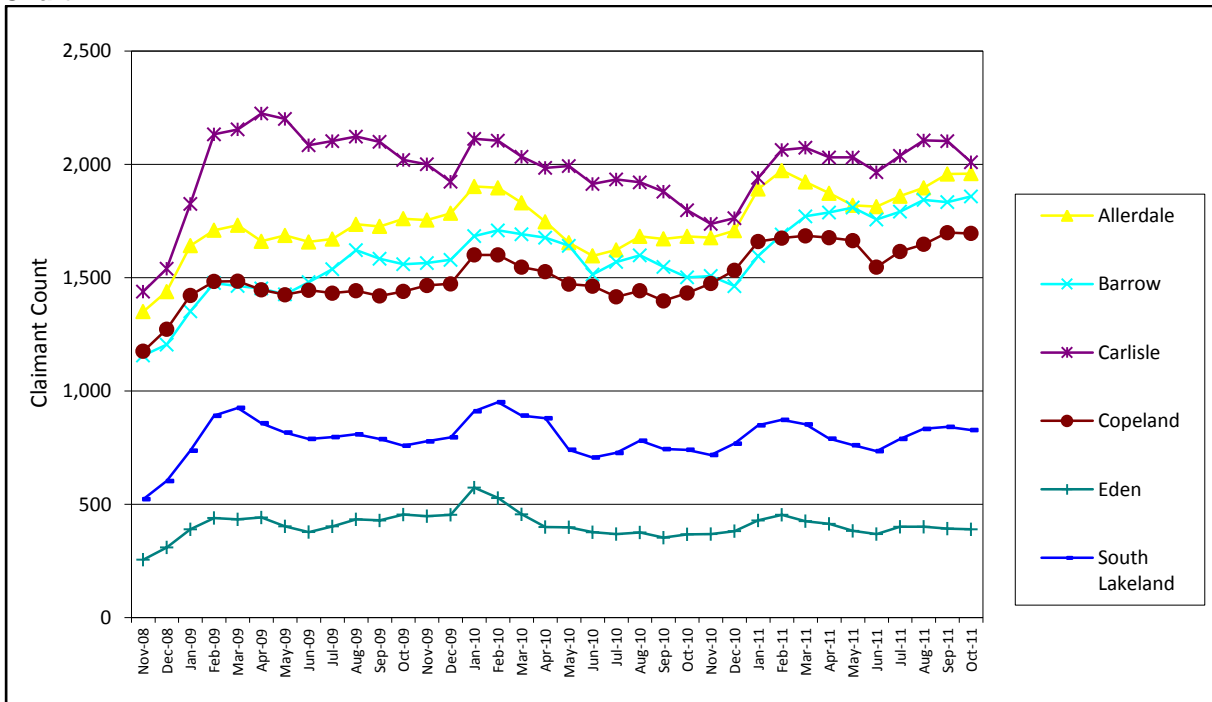
JSA CLAIMANT RATES – 3 Yr Trend

Chart 1



JSA CLAIMANT COUNTS – 3 Yr Trend

Chart 2



LONG TERM JSA CLAIMANTS – Oct 2011

Table 2

	Claiming Over 6 Months				Claiming Over a Year			
	No	Rate	Change		No	Rate	Change	
			Monthly	Annual			Monthly	Annual
Cumbria	3,060	1.0	125	930	1,075	0.3	75	170
North West	75,125	1.7	2,100	17,495	31,920	0.7	1,915	2,690
United Kingdom	623,825	1.5	15,705	130,980	264,880	0.7	15,045	12,725
Allerdale	765	1.3	40	250	295	0.5	30	80
Barrow-in-Furness	680	1.5	50	250	195	0.4	15	10
Carlisle	625	0.9	5	115	230	0.3	15	15
Copeland	685	1.5	30	270	250	0.6	15	85
Eden	115	0.4	5	30	40	0.1	0	-5
South Lakeland	190	0.3	-5	20	70	0.1	10	-10

Note: Rates are of the Working Age Population.

YOUNG JSA CLAIMANTS (aged 16-24) – Oct 2011

Table 3

	Male		Female		All young people		All young people			
	No	Rate	No	Rate	No	Rate	Monthly Change		Annual Change	
							No	Rate	No	Rate
Cumbria	2,075	7.9	945	4.0	3,025	6.0	-5	-0.2	660	27.9
North West	43,130	9.7	21,245	5.0	64,375	7.4	-270	-0.4	9,595	17.5
United Kingdom	317,415	8.3	164,585	4.5	482,000	6.4	-7,835	-1.6	65,610	15.8
Allerdale	485	10.2	210	5.0	695	7.8	10	1.5	170	32.4
Barrow	500	11.8	235	6.2	740	9.1	30	4.2	200	37.0
Carlisle	390	6.4	210	3.5	600	5.0	-50	-7.7	90	17.6
Copeland	465	12.3	180	5.4	645	9.1	5	0.8	145	29.0
Eden	80	3.3	35	1.7	120	2.6	5	4.3	20	20.0
South Lakeland	155	3.1	70	1.6	225	2.4	0	0.0	40	21.6
Barrow-in-Furness TTWA	565	n/a	265	n/a	835	n/a	45	5.6	225	36.9
Carlisle TTWA	465	n/a	245	n/a	705	n/a	-65	-8.8	105	17.5
Kendal TTWA	90	n/a	40	n/a	135	n/a	-10	-10.0	25	22.7
Penrith & Appleby TTWA	75	n/a	35	n/a	110	n/a	5	7.1	15	15.8
Whitehaven TTWA	440	n/a	165	n/a	605	n/a	5	2.3	125	26.0
Workington & Keswick TTWA	465	n/a	210	n/a	675	n/a	15	-1.1	165	32.4

Note: Rates are of the population aged 16-24. Rates are not available for Travel to Work Areas

LONG TERM YOUNG JSA CLAIMANTS (aged 16-24) – Oct 2011

Table 4

	YPs Claiming Over 6 Months				YPs Claiming Over a Year			
	No	Rate	Change		No	Rate	Change	
			Monthly	Annual			Monthly	Annual
Cumbria	625	1.2	70	400	35	0.1	10	20
North West	15,300	1.8	810	6,885	3,385	0.4	555	635
United Kingdom	124,620	1.7	2,720	54,865	30,255	0.4	4,950	6,385
Allerdale	150	1.7	10	90	10	0.1	5	5
Barrow-in-Furness	180	2.2	25	125	5	0.1	0	0
Carlisle	90	0.8	10	45	10	0.1	0	5
Copeland	155	2.2	10	105	10	0.2	5	10
Eden	20	0.5	5	10	0	0.0	0	0
South Lakeland	25	0.3	0	15	0	0.0	0	-5

Note: Rates are of the population aged 16-24.

JSA CLAIMANT USUAL AND SOUGHT OCCUPATION – Oct 2011

Table 5

OCCUPATION	Usual Occupation			Sought Occupation		
	Male	Female	Total	Male	Female	Total
Occupation unknown	50	70	120	50	70	120
Managers and Senior Officials	190	70	260	190	70	260
Professional Occupations	170	85	255	170	85	255
Associate Professional and Technical Occupations	290	90	380	295	90	385
Administrative and Secretarial Occupations	340	445	785	345	450	800
Skilled Trades Occupations	945	25	975	945	30	975
Personal Service Occupations	125	420	545	135	420	555
Sales and Customer Service occupations	875	970	1,845	865	975	1,840
Process, Plant and Machine Operatives	840	70	910	845	65	910
Elementary Occupations	2,110	525	2,635	2,095	520	2,615

Note: This dataset records the usual & sought occupation given by the claimant when registering for Job Seekers' Allowance. Values are rounded to the nearest 5 and therefore may not sum.

JSA CLAIMANT FLOWS – Oct 2011

Table 6

DISTRICT/TTWA	Male		Female		All Persons	
	Off Flow	On Flow	Off Flow	On Flow	Off Flow	On Flow
Cumbria	1,340	1,303	714	686	2,054	1,989
Allerdale	252	253	134	135	387	388
Barrow in Furness	241	265	128	131	369	396
Carlisle	361	317	205	172	567	490
Copeland	237	237	102	103	339	341
Eden	88	75	49	53	136	127
South Lakeland	161	156	95	91	257	247
Barrow in Furness TTWA	278	313	156	152	434	465
Carlisle TTWA	415	367	252	213	667	581
Kendal TTWA	124	108	68	70	192	179
Penrith & Appleby TTWA	80	71	45	47	125	118
Whitehaven TTWA	225	223	98	94	323	317
Workington & Keswick TTWA	236	234	106	123	341	357
Lancaster & Morecambe TTWA	461	426	252	236	713	661

Note: This dataset counts those who ended or started a claim during the previous month.

JSA CLAIMANT DESTINATIONS – Oct 2011

Table 7a

Reason for Leaving the Register - Number									
	Allerdale	Barrow	Carlisle	Copeland	Eden	South Lakeland	Cumbria	North West	United Kingdom
Found work	210	160	315	185	75	150	1,095	21,235	155,090
Increased work to 16+ hours/week	0	0	5	0	0	0	5	180	2,365
Gone abroad	20	20	30	15	10	15	110	2,230	17,050
Claimed Income Support	5	5	5	0	5	0	25	585	4,850
Claimed Incapacity Benefit	0	5	5	5	0	0	15	310	1,995
Claimed another benefit	5	5	5	10	0	5	30	590	4,280
Gone to full-time education	15	25	15	10	5	10	80	2,110	18,035
Gone onto approved training	0	0	0	0	0	0	0	35	325
Transfer to Govt-supported training	0	10	0	0	0	0	10	200	4,025
Retirement age reached	0	0	0	0	0	0	0	20	165
Automatic credits payable	0	0	0	0	0	0	0	5	10
Claimed back-to-work bonus	0	0	0	0	0	0	0	0	0
Gone to prison	10	5	10	5	0	0	30	370	2,925
Attending court	0	0	0	0	0	0	0	0	0
New claim review	0	0	0	0	0	0	5	370	3,095
Defective claim	0	0	5	0	0	0	10	555	2,410
Ceased claiming	5	25	20	10	5	15	75	1,020	8,900
Deceased	0	0	0	0	0	0	0	15	105
Not known	60	40	55	40	15	35	240	5,315	39,605
Failed to sign	110	125	180	105	45	70	635	14,585	117,435
Total	445	425	655	390	155	295	2,370	49,730	382,670

Values are rounded to the nearest 5.

Table 7b

Reason for Leaving the Register - Proportion									
	Allerdale	Barrow	Carlisle	Copeland	Eden	South Lakeland	Cumbria	North West	United Kingdom
Found work	76.5	61.6	74.5	75.1	77.9	76.7	73.2	71.2	68.7
Increased work to 16+ hours/week	0.0	0.8	0.7	0.4	0.0	0.0	0.4	0.6	1.0
Gone abroad	7.6	8.4	7.6	5.2	8.4	6.7	7.3	7.5	7.6
Claimed Income Support	1.4	2.3	1.4	0.8	3.2	1.0	1.5	2.0	2.2
Claimed Incapacity Benefit	0.7	1.1	1.0	2.0	0.0	0.5	1.0	1.0	0.9
Claimed another benefit	2.2	2.3	1.7	3.2	1.1	1.6	2.1	2.0	1.9
Gone to full-time education	5.4	9.1	4.0	4.8	5.3	4.7	5.5	7.1	8.0
Gone onto approved training	0.0	0.0	0.2	0.4	0.0	0.0	0.1	0.1	0.1
Transfer to Govt-supported training	0.4	3.0	0.2	0.4	0.0	0.5	0.8	0.7	1.8
Retirement age reached	0.0	0.0	0.0	0.0	0.0	0.0	0.0	0.1	0.1
Automatic credits payable	0.0	0.0	0.0	0.0	0.0	0.0	0.0	0.0	0.0
Claimed back-to-work bonus	0.0	0.0	0.0	0.0	0.0	0.0	0.0	0.0	0.0
Gone to prison	3.6	2.3	2.6	1.6	1.1	0.0	2.1	1.2	1.3
Attending court	0.0	0.0	0.0	0.0	0.0	0.0	0.0	0.0	0.0
New claim review	0.4	0.4	0.0	0.8	0.0	0.0	0.3	1.2	1.4
Defective claim	0.4	0.0	1.2	0.8	0.0	0.5	0.6	1.9	1.1
Ceased claiming	1.4	8.7	4.8	4.4	3.2	7.8	5.1	3.4	3.9
Deceased	0.0	0.0	0.0	0.0	0.0	0.0	0.0	0.0	0.0

Note: Proportions are of those who gave a reason for leaving the register (ie total does not include failed to sign or not known)

NOTIFIED VACANCIES BY INDUSTRY – Oct 2011

Table 8a

Industry	Area							Cumbria	
	Allerdale	Barrow	Carlisle	Copeland	Eden	South Lakeland	Cumbria	Monthly Change	Annual Change
Agriculture & Fishing	#	0	8	0	#	3	12	7	8
Energy & Water	0	0	#	0	#	0	#	0	0
Manufacturing	11	9	4	0	6	8	38	-14	-76
Construction	16	56	38	3	6	12	133	26	70
Retail, Hotels & Restaurants	76	41	167	37	56	159	536	-150	-111
Transport & Comms	6	6	52	4	10	30	108	59	-188
Business Activities & Finance	156	173	423	50	163	223	1,188	169	-80
Public Administration	49	6	39	15	21	289	419	76	113
Other Service	11	5	64	3	9	24	117	52	57
Total	328	296	796	114	272	748	2,554	223	-225
Total Monthly Change	110	98	119	-104	-96	96	223		
Total Annual Change	-115	37	-282	-81	-11	227	-225		

NB: Reporting months are now on a standardised 4 1/3 basis in order to smooth out variations due to differing time periods.

LIVE UNFILLED VACANCIES BY INDUSTRY – Oct 2011

Table 8b

Industry	Area							Cumbria	
	Allerdale	Barrow	Carlisle	Copeland	Eden	South Lakeland	Cumbria	Monthly Change	Annual Change
Agriculture & Fishing	1	0	8	0	1	1	11	7	10
Energy & Water	0	0	0	0	1	0	1	-1	-20
Manufacturing	9	9	8	0	7	5	38	2	-51
Construction	19	49	24	5	7	13	117	25	43
Retail, Hotels & Restaurants	58	23	88	118	37	124	448	-24	-61
Transport & Comms	4	4	36	4	9	22	79	53	-95
Business Activities & Finance	88	140	339	26	113	159	865	83	12
Public Administration	34	3	32	9	15	104	197	18	-89
Other Service	9	5	67	1	10	8	100	46	56
Total	222	233	602	163	200	436	1,856	209	-195
Total Monthly Change	43	90	-15	30	-1	62	209		
Total Annual Change	-39	24	-172	44	-39	-13	-195		

Note: The JobCentre Plus vacancies dataset does not provide comprehensive measures relating to all vacancies in the economy. The proportion of vacancies which are notified by employers varies over time, according to the occupation and industry of the area and labour market conditions. Notified vacancies are those placed with JobCentre Plus during the month, Live Unfilled vacancies are those for which a jobseeker can actively apply on the day the count is taken.

JSA CLAIMANT TO VACANCY RATIO - Oct 2011

Vacancy data can be used in conjunction with the claimant count to calculate a simple 'claimant to vacancy ratio'. This uses the number of live unfilled vacancies in a month, together with the number of claimants. A claimant/vacancy figure of more than 1 means that there are more claimants than live vacancies.

Table 9

	Claimant count	Live vacancies	Claimant/vacancy ratio
Great Britain	1,502,528	327,142	4.59
Cumbria	8,743	1,856	4.71
Allerdale	1,960	222	8.83
Barrow in Furness	1,859	233	7.98
Carlisle	2,010	602	3.34
Copeland	1,696	163	10.40
Eden	390	200	1.95
South Lakeland	828	436	1.90

Note: The JobCentre Plus vacancies dataset does not provide comprehensive measures relating to all vacancies in the economy. The proportion of vacancies which are notified by employers varies over time, according to the occupation and industry of the area and labour market conditions. Notified vacancies are those placed with JobCentre Plus during the month, Live Unfilled vacancies are those for which a jobseeker can actively apply on the day the count is taken.

For definitions of areas or for further information, please contact
Ginny Murphy, Research Officer, Cumbria County Council
Tel: 01228 226753 E-mail: ginny.murphy@cumbria.gov.uk

Copies of previous releases, together with other labour market and economic data, can be found on the following website: www.cumbriaobservatory.org.uk

Labour Market Briefing

November 2011

RESIDENCE-BASED JSA CLAIMANT COUNTS & RATES – Oct 2011

Locally Defined Areas

	Locally Defined Areas									
	Male		Female		All Persons		All Persons			
	No	Rate	No	Rate	No	Rate	Monthly Change		Annual Change	
							No	Rate	No	Rate
Key Service Centres										
Alston KSC	21	3.0	14	2.2	35	2.6	0	0.0	12	0.9
Ambleside KSC	7	0.6	7	0.6	14	0.6	3	0.1	-7	-0.3
Appleby KSC	17	2.0	7	0.8	24	1.4	6	0.3	-4	-0.2
Aspatria KSC	47	4.4	29	2.7	76	3.5	-5	-0.2	7	0.3
Barrow KSC	1,139	6.2	515	2.8	1,654	4.5	10	0.0	305	0.8
Brampton KSC	62	4.7	20	1.5	82	3.1	1	0.0	-6	-0.2
Brough KSC	6	1.5	#	#	8	1.0	1	0.1	-3	-0.4
Carlisle KSC	1,133	4.9	549	2.4	1,682	3.6	-73	-0.2	206	0.4
Cleator Moor KSC	151	6.9	65	3.0	216	4.9	-2	0.0	17	0.4
Cockermouth KSC	68	2.8	35	1.4	103	2.1	-5	-0.1	12	0.2
Dalton in Furness KSC	140	3.4	65	1.6	205	2.5	15	0.2	52	0.6
Egremont KSC	149	5.7	62	2.5	211	4.1	-2	0.0	27	0.5
Grange KSC	9	0.9	14	1.4	23	1.1	6	0.3	0	0.0
Grasmere KSC	3	0.5	0	0.0	3	0.3	0	0.0	-7	-0.6
Hawkshead KSC	4	0.8	3	0.6	7	0.7	0	0.0	2	0.2
Kendal KSC	206	2.4	91	1.1	297	1.7	-19	-0.1	35	0.2
Keswick KSC	22	1.4	22	1.4	44	1.4	7	0.2	8	0.3
Kirkby Lonsdale KSC	6	0.9	#	#	8	0.6	0	0.0	2	0.1
Kirkby Stephen KSC	10	1.4	5	0.7	15	1.0	0	0.0	-12	-0.8
Lazonby KSC	5	1.1	#	#	7	0.8	-3	-0.3	4	0.4
Longtown KSC	39	2.8	11	0.9	50	1.9	-18	-0.7	-6	-0.2
Maryport KSC	290	7.9	117	3.1	407	5.5	-1	0.0	60	0.8
Millom KSC	137	4.9	48	2.1	185	3.6	10	0.2	50	1.0
Milnthorpe KSC	10	1.7	8	1.3	18	1.5	3	0.3	4	0.3
Penrith KSC	112	2.4	52	1.2	164	1.8	0	0.0	20	0.2
Sedbergh KSC	10	0.8	6	0.6	16	0.7	2	0.1	3	0.1
Silloth KSC	35	3.9	13	1.4	48	2.6	1	0.1	8	0.4
Ulverston KSC	130	3.7	78	2.3	208	3.0	3	0.0	43	0.6
Whitehaven KSC	475	5.8	197	2.5	672	4.2	4	0.0	117	0.7
Wigton KSC	60	3.6	30	1.7	90	2.6	-7	-0.2	14	0.4
Windermere KSC	33	1.2	16	0.6	49	0.9	2	0.0	-6	-0.1
Workington KSC	568	7.4	257	3.4	825	5.4	3	0.0	131	0.9
Housing Market Areas										
Alston Moor HMA	21	3.0	14	2.2	35	2.6	0	0.0	12	0.9
Barrow HMA	1,279	5.7	580	2.6	1,859	4.1	25	0.1	357	0.8
Carlisle HMA	1,147	4.9	559	2.3	1,706	3.6	-73	-0.2	213	0.4
Central Lakes HMA	55	0.9	33	0.6	88	0.7	6	0.1	-16	-0.1
Cockermouth HMA	68	2.8	35	1.4	103	2.1	-5	-0.1	12	0.2
Eden Valley North HMA	150	1.8	75	0.9	225	1.4	-9	-0.1	28	0.2
Eden Valley South HMA	68	1.3	34	0.6	102	0.9	8	0.1	-17	-0.2
Kendal HMA	206	2.4	91	1.1	297	1.7	-19	-0.1	35	0.2
Millom HMA	137	4.9	48	2.1	185	3.6	10	0.2	50	1.0
North Lakes - East HMA	17	0.9	11	0.6	28	0.8	-2	-0.1	-1	0.0
North Lakes - West HMA	35	1.1	34	1.1	69	1.1	5	0.1	15	0.2
Rural Carlisle East HMA	164	2.2	79	1.1	243	1.6	-17	-0.1	16	0.1
Rural Carlisle West HMA	38	1.5	23	0.9	61	1.2	-3	-0.1	-17	-0.3
Rural Kendal HMA	72	1.0	37	0.5	109	0.8	-3	0.0	19	0.1
Sedbergh HMA	10	0.8	6	0.6	16	0.7	2	0.1	3	0.1
Ulverston and Furness HMA	173	2.9	96	1.6	269	2.2	0	0.0	46	0.4
West Lakes HMA	46	1.8	21	0.9	67	1.4	0	0.0	-8	-0.2
Whitehaven HMA	1,007	5.7	437	2.5	1,444	4.2	-13	0.0	221	0.6
Wigton HMA	90	2.3	49	1.2	139	1.8	-12	-0.2	16	0.2
Workington and Maryport HMA	1,150	5.8	499	2.5	1,649	4.2	14	0.0	234	0.6

Labour Market Briefing November 2011

Locally Defined Areas										
	Male		Female		All Persons		All Persons			
	No	Rate	No	Rate	No	Rate	Monthly Change		Annual Change	
							No	Rate	No	Rate
Children's Services Local Delivery Project Areas										
Alston CS LDP	21	3.0	14	2.2	35	2.6	0	0.0	12	0.9
Brampton CS LDP	178	2.2	89	1.1	267	1.7	-17	-0.1	23	0.1
Cleator Moor & Egremont CS LDP	455	4.9	193	2.1	648	3.5	-16	-0.1	53	0.3
Carlisle North CS LDP	100	2.7	52	1.4	152	2.0	-10	-0.1	33	0.4
Carlisle South CS LDP	533	5.5	277	2.8	810	4.1	-37	-0.2	108	0.6
Carlisle West CS LDP	508	4.9	223	2.2	731	3.5	-30	-0.1	53	0.3
Cockermouth & Keswick CS LDP	131	1.9	80	1.2	211	1.5	3	0.0	23	0.2
Dalston CS LDP	30	1.6	20	1.1	50	1.3	1	0.0	-5	-0.1
Furness CS LDP	1,452	5.1	676	2.4	2,128	3.7	25	0.0	403	0.7
Grange CS LDP	23	0.9	26	1.0	49	1.0	2	0.0	-3	-0.1
Kendal CS LDP	227	2.2	98	0.9	325	1.5	-22	-0.1	37	0.2
Kirkby Lonsdale CS LDP	6	0.9	#	#	8	0.6	0	0.0	2	0.1
Lakes CS LDP	17	0.6	13	0.5	30	0.5	5	0.1	-10	-0.2
Maryport CS LDP	326	7.0	134	2.8	460	4.9	0	0.0	64	0.7
Middle Eden CS LDP	35	1.2	22	0.7	57	0.9	5	0.1	-5	-0.1
Milnthorpe CS LDP	45	1.0	28	0.6	73	0.8	0	0.0	15	0.2
North Allerdale CS LDP	221	2.8	114	1.4	335	2.1	-15	-0.1	47	0.3
Penrith CS LDP	172	1.7	83	0.8	255	1.3	-13	-0.1	27	0.1
Sedbergh CS LDP	10	0.8	6	0.6	16	0.7	2	0.1	3	0.1
South Copeland CS LDP	152	4.1	57	1.8	209	3.1	11	0.2	51	0.7
Upper Eden CS LDP	28	1.2	15	0.6	43	0.9	5	0.1	-12	-0.3
Whitehaven CS LDP	583	5.9	256	2.6	839	4.3	2	0.0	159	0.8
Windermere CS LDP	38	1.1	20	0.6	58	0.9	-1	0.0	-3	0.0
Workington CS LDP	665	6.9	289	3.0	954	4.9	14	0.1	143	0.7
Health Areas										
Carlisle City South (Health)	1,033	5.3	497	2.5	1,530	3.9	-63	-0.2	173	0.4
Cockermouth & Keswick (Health)	131	1.9	80	1.2	211	1.5	3	0.0	23	0.2
Maryport (Health)	326	7.0	134	2.8	460	4.9	0	0.0	64	0.7
Mid Copeland (Health)	455	4.9	193	2.1	648	3.5	-16	-0.1	53	0.3
North Allerdale (Health)	221	2.8	114	1.4	335	2.1	-15	-0.1	47	0.3
South Copeland (Health)	152	4.1	57	1.8	209	3.1	11	0.2	51	0.7
Whitehaven (Health)	583	5.9	256	2.6	839	4.3	2	0.0	159	0.8
Workington (Health)	665	6.9	289	3.0	954	4.9	14	0.1	143	0.7
West Cumbria Partnership Areas										
Cleator Moor WCP	231	5.8	100	2.6	331	4.3	-9	-0.1	29	0.4
Cockermouth WCP	106	2.2	53	1.1	159	1.7	-3	0.0	10	0.1
Egremont WCP	199	4.8	84	2.1	283	3.5	-7	-0.1	31	0.4
Keswick WCP	25	1.2	27	1.3	52	1.2	6	0.1	13	0.3
Maryport WCP	326	7.0	134	2.8	460	4.9	0	0.0	64	0.7
Mid Copeland WCP	25	2.0	9	0.8	34	1.4	0	0.0	-7	-0.3
Millom WCP	152	4.1	57	1.8	209	3.1	11	0.2	51	0.7
North Allerdale WCP	221	2.8	114	1.4	335	2.1	-15	-0.1	47	0.3
Whitehaven WCP	583	5.9	256	2.6	839	4.3	2	0.0	159	0.8
Workington WCP	665	6.9	289	3.0	954	4.9	14	0.1	143	0.7
Other Areas										
Lake District National Park	191	1.2	111	0.7	302	1.0	1	0.0	3	0.0
Keswick Market Town Initiative	25	1.2	27	1.3	52	1.2	6	0.1	13	0.3
Longtown Market Town Initiative	47	2.3	15	0.8	62	1.6	-21	-0.5	-7	-0.2
Penrith Market Town Initiative	184	1.6	95	0.8	279	1.2	-12	-0.1	25	0.1
Ulverston Market Town Initiative	156	2.9	93	1.8	249	2.3	-1	0.0	44	0.4

NB: Counts of less than 3 are denoted by a #. Wards are Census 2003 wards.

Note 1: Rates are of the Working Age Population.

Note 2: Please note that the definition of working age is now 16-65 for both males and females.

RESIDENCE-BASED JSA CLAIMANT COUNTS & RATES – Oct 2011

Wards

WARD	Male		Female		All Persons		All Persons			
	No	Rate	No	Rate	No	Rate	Monthly Change		Annual Change	
							No	Rate	No	Rate
ALLERDALE										
All Saints	45	3.2	27	1.8	72	2.4	-2	-0.1	9	0.3
Aspatria	47	4.4	29	2.7	76	3.5	-5	-0.2	7	0.3
Boltons	6	1.1	5	0.9	11	1.0	0	0.0	2	0.2
Broughton St Bridget's	25	1.9	10	0.7	35	1.3	-1	0.0	-9	-0.3
Christchurch	23	2.3	8	0.8	31	1.6	-3	-0.2	3	0.2
Clifton	29	5.9	7	1.4	36	3.6	3	0.3	-3	-0.3
Crummock	4	0.8	#	#	6	0.6	-1	-0.1	0	0.0
Dalton	9	1.7	6	1.1	15	1.4	4	0.4	7	0.7
Derwent Valley	3	0.6	5	1.0	8	0.8	-1	-0.1	5	0.5
Ellen	36	3.6	17	1.7	53	2.6	1	0.0	4	0.2
Ellenborough	71	6.2	31	2.6	102	4.4	2	0.1	20	0.9
Ewanrigg	96	9.6	46	4.2	142	6.8	1	0.0	20	1.0
Flimby	40	7.3	11	2.0	51	4.7	-8	-0.7	2	0.2
Harrington	38	4.0	11	1.2	49	2.6	10	0.5	0	0.0
Holme	15	2.8	9	1.8	24	2.3	0	0.0	-1	-0.1
Keswick	22	1.4	22	1.4	44	1.4	7	0.2	8	0.3
Marsh	8	1.6	3	0.6	11	1.1	-1	-0.1	2	0.2
Moorclose	117	8.5	59	3.8	176	6.0	-2	-0.1	27	0.9
Moss Bay	170	13.1	81	5.7	251	9.2	-4	-0.1	41	1.5
Netherhall	83	8.5	29	3.0	112	5.7	4	0.2	18	0.9
Seaton	68	4.4	25	1.6	93	2.9	8	0.3	15	0.5
Silloth	35	3.9	13	1.4	48	2.6	1	0.1	8	0.4
Solway	14	2.7	5	1.0	19	1.8	-2	-0.2	6	0.6
St John's	78	4.6	28	1.8	106	3.2	-9	-0.3	11	0.3
St Michael's	156	8.8	67	4.2	223	6.6	10	0.3	49	1.5
Stainburn	9	1.6	11	2.0	20	1.8	-2	-0.2	3	0.3
Wampool	7	1.3	8	1.6	15	1.4	-1	-0.1	-1	-0.1
Warnell	8	1.3	3	0.5	11	0.9	-2	-0.2	2	0.2
Waver	7	1.2	5	0.9	12	1.0	-1	-0.1	-1	-0.1
Wharrels	14	2.7	4	0.8	18	1.8	3	0.3	9	0.9
Wigton	60	3.6	30	1.7	90	2.6	-7	-0.2	14	0.4
BARROW										
Barrow Island	127	14.3	41	5.2	168	10.0	-7	-0.4	18	1.1
Central	208	12.5	94	5.7	302	9.1	-7	-0.2	45	1.4
Dalton North	67	3.1	24	1.1	91	2.1	4	0.1	19	0.4
Dalton South	73	3.8	41	2.1	114	2.9	11	0.3	33	0.8
Hawcoat	27	2.0	6	0.4	33	1.2	-10	-0.4	9	0.3
Hindpool	166	9.8	68	3.9	234	6.8	7	0.2	16	0.5
Newbarns	89	4.7	36	1.9	125	3.3	8	0.2	47	1.3
Ormsgill	144	7.5	72	3.6	216	5.5	12	0.3	32	0.8
Parkside	67	3.7	35	2.0	102	2.9	5	0.1	32	0.9
Risedale	120	6.7	62	3.6	182	5.2	8	0.2	37	1.0
Roosecote	63	3.3	45	2.3	108	2.8	5	0.1	38	1.0
Walney North	68	4.3	31	1.9	99	3.0	-8	-0.2	25	0.8
Walney South	60	3.4	25	1.4	85	2.4	-3	-0.1	6	0.2

NB: Counts of less than 3 are denoted by a #. Wards are Census 2003 wards.

Note 1: Rates are of the Working Age Population.

Note 2: Please note that the definition of working age is now 16-65 for both males and females.

Labour Market Briefing

November 2011

WARD	Male		Female		All Persons		All Persons			
							Monthly Change		Annual Change	
	No	Rate	No	Rate	No	Rate	No	Rate		
CARLISLE										
Belah	63	3.3	23	1.2	86	2.3	-13	-0.3	14	0.4
Belle Vue	92	5.1	53	2.6	145	3.8	-5	-0.1	29	0.8
Botcherby	119	6.3	53	2.6	172	4.4	-7	-0.2	13	0.3
Brampton	62	4.7	20	1.5	82	3.1	1	0.0	-6	-0.2
Burgh	8	1.1	3	0.5	11	0.8	-4	-0.3	-12	-0.9
Castle	149	6.6	58	2.9	207	4.9	-8	-0.2	1	0.0
Currock	104	5.1	60	3.0	164	4.0	-8	-0.2	12	0.3
Dalston	30	1.6	20	1.1	50	1.3	1	0.0	-5	-0.1
Denton Holme	92	4.3	47	2.2	139	3.3	-20	-0.5	-3	-0.1
Great Corby and Geltsdale	16	2.2	6	0.9	22	1.6	2	0.1	8	0.6
Harraby	82	4.3	35	1.8	117	3.0	-7	-0.2	9	0.2
Hayton	14	2.3	10	1.7	24	2.0	0	0.0	7	0.6
Irthing	11	1.8	8	1.3	19	1.5	2	0.2	4	0.3
Longtown & Rockcliffe	39	2.8	11	0.9	50	1.9	-18	-0.7	-6	-0.2
Lyne	8	1.2	4	0.6	12	0.9	-3	-0.2	-1	-0.1
Morton	112	7.0	36	2.2	148	4.6	4	0.1	22	0.7
St Aidans	103	4.7	75	3.5	178	4.1	4	0.1	55	1.3
Stanwix Rural	12	0.8	18	1.2	30	1.0	-3	-0.1	4	0.1
Stanwix Urban	37	2.1	29	1.6	66	1.8	3	0.1	19	0.5
Upperby	125	7.6	54	3.2	179	5.4	-19	-0.6	19	0.6
Wetheral	16	1.2	12	0.9	28	1.0	2	0.1	13	0.5
Yewdale	55	2.9	26	1.4	81	2.2	3	0.1	16	0.4
COPELAND										
Arlecdon	9	1.6	6	1.2	15	1.4	-4	-0.4	-3	-0.3
Beckermet	37	3.9	16	1.8	53	2.9	-4	-0.2	-3	-0.2
Bootle	9	2.4	5	1.2	14	1.8	1	0.1	1	0.1
Bransty	44	2.6	24	1.4	68	2.0	5	0.1	22	0.7
Cleator Moor North	87	6.4	36	2.7	123	4.6	-7	-0.3	8	0.3
Cleator Moor South	64	7.6	29	3.3	93	5.4	5	0.3	9	0.5
Distington	98	7.7	49	3.8	147	5.7	0	0.0	50	2.0
Egremont North	74	5.4	30	2.1	104	3.7	-3	-0.1	1	0.0
Egremont South	75	6.1	32	2.9	107	4.6	1	0.0	26	1.1
Ennerdale	6	1.7	3	1.0	9	1.3	-1	-0.1	-2	-0.3
Frizington	65	7.7	26	3.2	91	5.5	-2	-0.1	17	1.0
Gosforth	7	1.7	6	1.5	13	1.6	4	0.5	1	0.1
Harbour	114	8.1	38	3.3	152	5.9	0	0.0	36	1.4
Haverigg	15	1.5	8	2.0	23	1.7	0	0.0	12	0.9
Hensingham	75	5.9	27	2.0	102	3.9	10	0.4	1	0.0
Hillcrest	19	2.2	11	1.4	30	1.8	-3	-0.2	7	0.4
Holborn Hill	52	6.9	16	2.0	68	4.4	7	0.4	22	1.4
Kells	40	5.3	20	2.6	60	3.9	3	0.2	25	1.6
Millom Without	6	1.2	4	0.9	10	1.0	0	0.0	0	0.0
Mirehouse	107	8.0	36	2.6	143	5.2	-17	-0.6	10	0.4
Moresby	10	2.6	10	2.3	20	2.4	-2	-0.2	-8	-1.0
Newtown	70	6.4	24	2.3	94	4.4	3	0.1	16	0.7
Sandwith	76	9.5	41	4.8	117	7.0	6	0.4	16	1.0
Seascale	18	2.2	3	0.4	21	1.3	-4	-0.2	-8	-0.5
St Bees	13	2.2	6	1.1	19	1.7	-1	-0.1	7	0.6

NB: Counts of less than 3 are denoted by a #. Wards are Census 2003 wards.

Note 1: Rates are of the Working Age Population.

Note 2: Please note that the definition of working age is now 16-65 for both males and females.

Labour Market Briefing

November 2011

WARD	Male		Female		All Persons		All Persons			
							Monthly Change		Annual Change	
	No	Rate	No	Rate	No	Rate	No	Rate		
EDEN										
Alston Moor	21	3.0	14	2.2	35	2.6	0	0.0	12	0.9
Appleby (Appleby)	7	2.1	4	1.2	11	1.6	3	0.4	-1	-0.1
Appleby (Bongate)	10	1.9	3	0.6	13	1.2	3	0.3	-3	-0.3
Askham	6	1.4	7	1.5	13	1.4	-2	-0.2	2	0.2
Brough	6	1.5	#	#	8	1.0	1	0.1	-3	-0.4
Crosby Ravensworth	5	1.1	#	#	6	0.6	-1	-0.1	1	0.1
Dacre	3	0.7	4	0.9	7	0.8	-1	-0.1	0	0.0
Eamont	8	2.0	#	#	10	1.2	-2	-0.2	3	0.4
Greystoke	3	0.7	0	0.0	3	0.3	#	0.1	0	0.0
Hartside	3	0.8	5	1.4	8	1.1	0	0.0	3	0.4
Hesket	7	0.7	6	0.6	13	0.7	-3	-0.2	-4	-0.2
Kirkby Stephen	10	1.4	5	0.7	15	1.0	0	0.0	-12	-0.8
Kirkby Thore	8	1.6	5	1.0	13	1.3	2	0.2	-5	-0.5
Kirkoswald	9	1.9	#	#	10	1.1	-1	-0.1	2	0.2
Langwathby	4	0.8	3	0.6	7	0.7	-2	-0.2	-1	-0.1
Lazonby	5	1.1	#	#	7	0.8	-3	-0.3	4	0.4
Long Marton	#	#	#	#	3	0.4	-1	-0.1	0	0.0
Morland	#	#	#	#	3	0.4	-1	-0.1	0	0.0
Orton with Tebay	6	1.3	4	0.8	10	1.1	-2	-0.2	3	0.3
Penrith Carleton	3	0.7	5	1.0	8	0.9	-3	-0.3	3	0.3
Penrith East	24	3.0	5	0.6	29	1.8	-8	-0.5	9	0.6
Penrith North	35	2.8	11	0.9	46	1.9	4	0.2	1	0.0
Penrith Pategill	6	1.8	11	2.7	17	2.3	3	0.4	2	0.3
Penrith South	23	3.3	11	1.6	34	2.5	6	0.4	12	0.9
Penrith West	21	1.9	9	0.9	30	1.4	-2	-0.1	-7	-0.3
Ravenstonedale	#	#	0	0.0	#	#	#	0.2	#	-0.5
Shap	6	1.2	#	#	8	0.9	1	0.1	-3	-0.3
Skelton	7	1.4	#	#	9	1.0	1	0.1	4	0.4
Ullswater	#	#	#	#	4	0.4	-2	-0.2	0	0.0
Warcop	4	0.9	4	0.9	8	0.9	5	0.6	3	0.3

NB: Counts of less than 3 are denoted by a #. Wards are Census 2003 wards.

Note 1: Rates are of the Working Age Population.

Note 2: Please note that the definition of working age is now 16-65 for both males and females.

Labour Market Briefing November 2011

WARD	Male		Female		All Persons		All Persons			
							Monthly Change		Annual Change	
	No	Rate	No	Rate	No	Rate	No	Rate		
SOUTH LAKELAND										
Arnside & Beetham	10	0.9	4	0.4	14	0.7	-2	-0.1	-4	-0.2
Broughton	17	2.4	3	0.5	20	1.5	1	0.1	2	0.1
Burneside	6	1.0	3	0.5	9	0.8	-5	-0.4	0	0.0
Burton & Holme	6	0.7	3	0.3	9	0.5	0	0.0	3	0.2
Cartmel	3	0.6	5	1.0	8	0.8	-2	-0.2	0	0.0
Coniston	3	0.5	3	0.5	6	0.5	2	0.2	2	0.2
Crake Valley	4	0.7	#	#	6	0.5	0	0.0	-1	-0.1
Crooklands	6	0.9	5	0.7	11	0.8	-1	-0.1	0	0.0
Grange	9	0.9	14	1.4	23	1.1	6	0.3	0	0.0
Hawkshead	4	0.8	3	0.6	7	0.7	0	0.0	2	0.2
Holker	6	1.1	3	0.6	9	0.9	-1	-0.1	-3	-0.3
Kendal Castle	8	1.8	#	#	9	1.0	-1	-0.1	-3	-0.3
Kendal Far Cross	14	2.1	6	0.8	20	1.4	0	0.0	-1	-0.1
Kendal Fell	33	5.5	8	1.4	41	3.5	6	0.5	4	0.3
Kendal Glebelands	4	0.7	4	0.7	8	0.7	-2	-0.2	-5	-0.4
Kendal Heron Hill	12	2.0	#	#	14	1.2	3	0.3	5	0.4
Kendal Highgate	26	4.7	11	2.2	37	3.5	6	0.6	10	1.0
Kendal Kirkland	21	3.4	11	1.7	32	2.6	-1	-0.1	2	0.2
Kendal Mintsfeet	18	2.7	11	1.7	29	2.2	0	0.0	-2	-0.2
Kendal Nether	4	0.8	#	#	6	0.6	-3	-0.3	-1	-0.1
Kendal Oxenholme	23	3.0	10	1.3	33	2.1	-7	-0.5	12	0.8
Kendal Parks	3	0.4	5	0.7	8	0.6	-4	-0.3	2	0.1
Kendal Stonecross	9	1.8	4	0.7	13	1.3	-4	-0.4	0	0.0
Kendal Strickland	10	1.5	7	1.0	17	1.2	0	0.0	4	0.3
Kendal Underley	21	3.2	9	1.3	30	2.2	-12	-0.9	8	0.6
Kirkby Lonsdale	6	0.9	#	#	8	0.6	0	0.0	2	0.1
Lakes Ambleside	7	0.6	7	0.6	14	0.6	3	0.1	-7	-0.3
Lakes Grasmere	3	0.5	0	0.0	3	0.3	0	0.0	-7	-0.6
Levens	3	0.7	6	1.2	9	0.9	1	0.1	4	0.4
Low Furness & Swarthmoor	22	1.8	13	1.0	35	1.4	-4	-0.2	2	0.1
Lyth Valley	10	1.6	#	#	12	0.9	-1	-0.1	8	0.6
Milnthorpe	10	1.7	8	1.3	18	1.5	3	0.3	4	0.3
Natland	6	1.1	#	#	7	0.6	0	0.0	-2	-0.2
Sedbergh	10	0.8	6	0.6	16	0.7	2	0.1	3	0.1
Staveley-in-Cartmel	5	0.9	4	0.8	9	0.9	-1	-0.1	0	0.0
Staveley-in-Westmorland	5	0.8	4	0.7	9	0.7	-3	-0.2	3	0.2
Ulverston Central	18	3.1	17	3.1	35	3.1	-1	-0.1	1	0.1
Ulverston East	36	5.2	19	2.7	55	3.9	-2	-0.1	5	0.4
Ulverston North	21	3.4	13	2.1	34	2.8	-1	-0.1	18	1.5
Ulverston South	16	3.0	12	2.2	28	2.6	8	0.8	13	1.2
Ulverston Town	24	4.2	11	2.0	35	3.1	-2	-0.2	-6	-0.5
Ulverston West	15	2.8	6	1.2	21	2.0	1	0.1	12	1.2
Whinfell	9	1.2	3	0.4	12	0.8	2	0.1	4	0.3
Windermere Applethwaite	8	1.1	4	0.6	12	0.9	-1	-0.1	1	0.1
Windermere Bowness North	9	1.6	3	0.5	12	1.0	0	0.0	-1	-0.1
Windermere Bowness South	7	1.0	6	0.9	13	1.0	4	0.3	4	0.3
Windermere Town	9	1.2	3	0.4	12	0.8	-1	-0.1	-10	-0.7

NB: Counts of less than 3 are denoted by a #. Wards are Census 2003 wards.

Note 1: Rates are of the Working Age Population.

Note 2: Please note that the definition of working age is now 16-65 for both males and females.