

The August 2011 unemployment and vacancy figures were released by the Office for National Statistics on 14th September 2011. The JSA Claimant Count was taken on 11th August 2011 and the vacancy count was for the month to 5th August 2011.

The JSA Claimant Count & Rate (not seasonally adjusted)

The JSA claimant *count* in Cumbria rose by 233 between July and Aug 2011 to 8,729. This non-seasonally adjusted figure also rose both regionally and nationally (see “other measures of joblessness” for the seasonally adjusted national figure). The claimant count rose in all districts except Eden where it was unchanged. Between the same two months last year, the count in Cumbria rose by 164 people. The JSA claimant *rate* in Cumbria in Aug 2011 was up 0.1 at 2.8%. The rate was also up by 0.1 regionally and nationally but remains higher than locally at 4.4% and 3.9% respectively.

Compared to a year ago, the JSA claimant count in Cumbria is 926 higher, a rise of 11.9% over the year. It is also higher nationally than a year ago but by a smaller margin, 8.3%. The claimant *rate* in Cumbria is up by 0.3 compared to a year ago, the national rate is also up by 0.3 compared to a year ago.

A third of all claimants, 2,920, were young people aged 16-24, a rise of 215 from last month. This represents 5.8% of all people in this age group, lower than the national average of 6.4% but double the rate for the population as a whole in Cumbria. JSA Claimant rates for young people in Allerdale (7.0%), Barrow (8.5%) and Copeland (8.5%) were higher than nationally.

Other Measures of Joblessness

These figures are often quoted by the national press but are not available for local areas. They are provided here for information but should not directly be compared with those above as the methodology used to compile them is different.

The jobless total for the UK (claimants and non claimants looking for work) rose by 80,000 over the quarter ending July 2011 to 2.51 million, the largest increase for almost 2 years. The jobless rate rose by 0.3 over the quarter to 7.9%. Similar figures using the wider definition of joblessness are not available at local level.

The seasonally adjusted claimant count for the UK was 1,580,900 in Aug 2011, up by 20,300 over the previous month. Comparable seasonally adjusted figures are not available at local level.

Notified Vacancies

The number of new vacancies notified to JobCentre Plus in Cumbria in the month to 5th August 2011 was 2,344 a rise of 35 compared to the number notified in July but 292 fewer than were notified in the same month last year.

JSA Claimant to Vacancy Ratio

The ratio of claimants to live unfilled vacancies in Cumbria was 5.10 in Aug 2011 (GB 5.55). The ratio was especially high in Barrow (17.90) and Copeland (12.98) and especially low in Eden (1.40) and South Lakeland (1.99).

RESIDENCE-BASED CLAIMANT COUNTS & RATES – Aug 2011

Table 1

National, County, Districts, Travel to Work Areas & Parliamentary Constituencies										
	Male		Female		All Persons		All Persons			
	No	Rate	No	Rate	No	Rate	Monthly Change		Annual Change	
	No	Rate	No	Rate	No	Rate	No	Rate	No	Rate
Cumbria	5,948	3.8	2,781	1.8	8,729	2.8	233	0.1	926	0.3
North West	132,581	5.9	63,305	2.8	195,886	4.4	5,190	0.1	16,213	0.4
United Kingdom	1,042,341	5.2	534,494	2.6	1,576,835	3.9	35,042	0.1	120,812	0.3
Great Britain	999,151	5.1	515,879	2.6	1,515,030	3.9	33,872	0.1	118,022	0.3
<i>District</i>										
Allerdale	1,316	4.5	581	2.0	1,897	3.2	37	0.1	214	0.4
Barrow in Furness	1,254	5.6	590	2.6	1,844	4.1	52	0.1	245	0.5
Carlisle	1,406	4.2	700	2.1	2,106	3.1	68	0.1	185	0.3
Copeland	1,152	5.1	496	2.3	1,648	3.7	32	0.1	205	0.5
Eden	274	1.7	127	0.8	401	1.3	0	0.0	25	0.1
South Lakeland	546	1.8	287	0.9	833	1.3	44	0.1	52	0.1
<i>Travel to Work Area</i>										
Barrow in Furness	1,410	4.9	681	2.4	2,091	3.6	57	0.1	235	0.4
Carlisle	1,648	3.9	833	2.0	2,481	2.9	60	0.1	202	0.2
Kendal	390	1.5	196	0.8	586	1.1	39	0.1	62	0.1
Penrith & Appleby	245	1.6	111	0.7	356	1.2	-3	0.0	12	0.0
Whitehaven	1,090	4.9	466	2.2	1,556	3.6	31	0.1	180	0.4
Workington & Keswick	1,249	5.0	534	2.1	1,783	3.5	42	0.1	212	0.4
Lancaster & Morecambe	1,910	4.0	916	1.9	2,826	3.0	102	0.1	309	0.3
<i>Parliamentary Constituency</i>										
Barrow & Furness	1,410	4.9	681	2.4	2,091	3.6	57	0.1	235	0.4
Carlisle	1,244	4.7	608	2.3	1,852	3.5	41	0.1	154	0.3
Copeland	1,185	4.5	524	2.1	1,709	3.3	40	0.1	217	0.4
Penrith & The Border	500	2.0	260	1.0	760	1.5	21	0.0	83	0.2
Westmorland & Lonsdale	390	1.5	196	0.8	586	1.1	39	0.1	62	0.1
Workington	1,219	5.1	512	2.1	1,731	3.6	35	0.1	175	0.4

NB: Rates are of the resident working age population

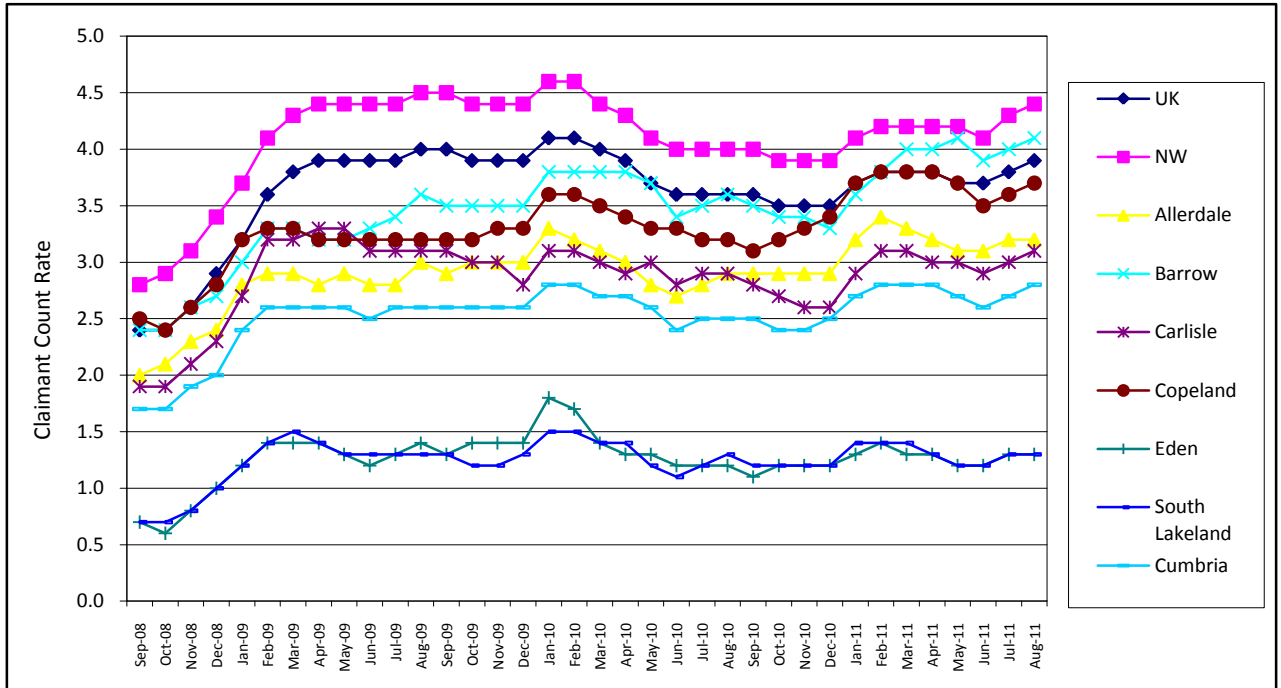
Note 1: From the May 2010 Briefing onwards, Parliamentary Constituencies are the 2010 boundaries.

Note 2: Please note that the definition of working age is now 16-65 for both males and females.

Labour Market Briefing September 2011

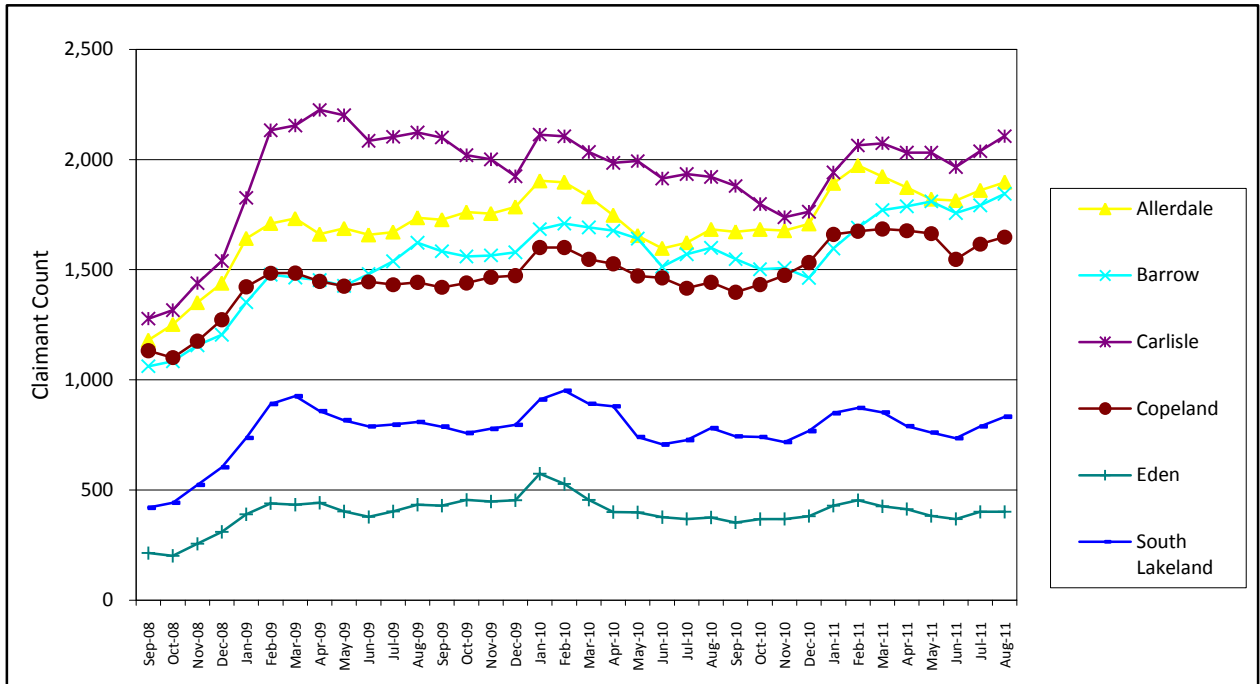
JSA CLAIMANT RATES – 3 Yr Trend

Chart 1



JSA CLAIMANT COUNTS – 3 Yr Trend

Chart 2



LONG TERM JSA CLAIMANTS – Aug 2011

Table 2

	Claiming Over 6 Months				Claiming Over a Year			
	No	Rate	Change		No	Rate	Change	
			Monthly	Annual			Monthly	Annual
Cumbria	2,735	0.9	245	455	945	0.3	85	10
North West	70,340	1.6	4,015	5,880	28,650	0.6	1,180	-2,600
United Kingdom	587,150	1.5	32,775	47,375	237,720	0.6	11,175	-24,110
Allerdale	670	1.1	55	115	255	0.4	35	30
Barrow-in-Furness	580	1.3	65	130	180	0.4	10	-10
Carlisle	600	0.9	55	65	210	0.3	10	-10
Copeland	600	1.4	40	165	210	0.5	15	35
Eden	95	0.3	5	-15	30	0.1	5	-20
South Lakeland	180	0.3	15	-15	60	0.1	5	-10

Note: Rates are of the Working Age Population.

YOUNG JSA CLAIMANTS (aged 16-24) – Aug 2011

Table 3

	Male		Female		All young people		All young people			
	No	Rate	No	Rate	No	Rate	Monthly Change		Annual Change	
							No	Rate	No	Rate
Cumbria	2,025	7.7	895	3.7	2,920	5.8	215	0.4	455	0.9
North West	41,265	9.2	20,600	4.8	61,860	7.1	3,455	0.4	6,355	0.7
United Kingdom	314,970	8.2	166,135	4.6	481,100	6.4	23,690	0.3	54,875	0.7
Allerdale	445	9.4	180	4.3	625	7.0	30	0.4	120	1.3
Barrow	475	11.2	215	5.6	690	8.5	75	0.9	135	1.7
Carlisle	450	7.4	220	3.6	665	5.5	25	0.2	30	0.3
Copeland	425	11.2	175	5.4	600	8.5	50	0.7	120	1.7
Eden	80	3.2	40	1.7	115	2.5	-5	-0.1	20	0.4
South Lakeland	155	3.1	65	1.5	225	2.4	35	0.4	30	0.3

Note: Rates are of the population aged 16-24.

LONG TERM YOUNG JSA CLAIMANTS (aged 16-24) – Aug 2011

Table 4

	YPs Claiming Over 6 Months				YPs Claiming Over a Year			
	No	Rate	Change		No	Rate	Change	
			Monthly	Annual			Monthly	Annual
Cumbria	460	0.9	115	195	25	0.1	5	10
North West	13,460	1.5	1,875	2,725	2,470	0.3	230	-720
United Kingdom	115,960	1.5	12,985	28,460	21,200	0.3	2,405	-5,330
Allerdale	110	1.3	30	30	5	0.1	0	0
Barrow-in-Furness	125	1.6	35	65	5	0.0	5	0
Carlisle	70	0.6	20	20	10	0.1	0	5
Copeland	110	1.6	20	60	5	0.1	0	5
Eden	15	0.3	5	5	0	0.0	0	0
South Lakeland	20	0.2	0	0	5	0.0	0	0

Note: Rates are of the population aged 16-24.

JSA CLAIMANT USUAL AND SOUGHT OCCUPATION – Aug 2011

Table 5

OCCUPATION	Usual Occupation			Sought Occupation		
	Male	Female	Total	Male	Female	Total
Occupation unknown	50	80	130	50	80	130
Managers and Senior Officials	205	80	285	200	75	275
Professional Occupations	155	100	255	160	100	255
Associate Professional and Technical Occupations	275	95	370	280	95	375
Administrative and Secretarial Occupations	335	450	785	340	455	795
Skilled Trades Occupations	915	25	940	910	25	935
Personal Service Occupations	140	370	510	145	380	525
Sales and Customer Service occupations	875	965	1,840	865	960	1,825
Process, Plant and Machine Operatives	835	75	915	840	75	915
Elementary Occupations	2,135	540	2,675	2,130	535	2,665

Note: This dataset records the usual & sought occupation given by the claimant when registering for Job Seekers' Allowance. Values are rounded to the nearest 5 and therefore may not sum.

JSA CLAIMANT FLOWS – Aug 2011

Table 6

DISTRICT/TTWA	Male		Female		All Persons	
	Off Flow	On Flow	Off Flow	On Flow	Off Flow	On Flow
Cumbria	1,177	1,354	641	732	1,818	2,087
Allerdale	214	261	138	134	352	395
Barrow in Furness	233	275	116	137	349	412
Carlisle	336	386	169	197	505	583
Copeland	184	203	93	110	277	313
Eden	70	63	34	43	104	106
South Lakeland	139	167	92	110	231	277
Barrow in Furness TTWA	262	308	142	165	404	472
Carlisle TTWA	393	439	203	229	596	667
Kendal TTWA	109	134	66	82	176	217
Penrith & Appleby TTWA	65	56	30	38	95	94
Whitehaven TTWA	177	196	90	105	267	301
Workington & Keswick TTWA	190	233	115	120	304	353
Lancaster & Morecambe TTWA	410	465	207	251	616	716

Note: This dataset counts those who ended or started a claim during the previous month.

JSA CLAIMANT DESTINATIONS – Aug 2011

Table 7a

	Reason for Leaving the Register - Number								
	Allerdale	Barrow	Carlisle	Copeland	Eden	South Lakeland	Cumbria	North West	United Kingdom
Found work	155	140	185	130	45	90	745	13,725	102,325
Increased work to 16+ hours/week	0	0	5	0	0	0	5	140	1,820
Gone abroad	15	15	25	15	0	15	90	2,530	18,760
Claimed Income Support	5	5	0	5	0	0	20	410	3,330
Claimed Incapacity Benefit	5	5	5	5	0	0	20	245	1,665
Claimed another benefit	5	5	10	10	5	5	35	470	3,320
Gone to full-time education	0	0	0	0	0	0	5	725	4,625
Gone onto approved training	0	0	0	0	0	0	0	10	105
Transfer to Govt-supported training	0	10	0	0	0	0	10	160	3,210
Retirement age reached	0	0	0	0	0	0	0	15	125
Automatic credits payable	0	0	0	0	0	0	0	0	10
Claimed back-to-work bonus	0	0	0	0	0	0	0	0	0
Gone to prison	0	0	15	5	0	0	25	345	2,240
Attending court	0	0	0	0	0	0	0	0	5
New claim review	0	0	0	0	0	0	5	285	2,460
Defective claim	0	0	0	0	0	0	0	485	2,000
Ceased claiming	15	15	15	5	5	15	65	810	6,960
Deceased	0	0	0	0	0	0	0	10	75
Not known	35	25	50	35	10	30	185	4,440	32,085
Failed to sign	85	95	160	50	25	50	470	10,635	86,810
Total	325	320	465	255	95	215	1,680	35,440	271,920

Values are rounded to the nearest 5.

Table 7b

	Reason for Leaving the Register - Proportion								
	Allerdale	Barrow	Carlisle	Copeland	Eden	South Lakeland	Cumbria	North West	United Kingdom
Found work	76.1	70.6	71.8	74.9	75.9	68.2	72.7	67.4	66.9
Increased work to 16+ hours/week	0.0	0.0	1.5	0.0	1.7	1.5	0.7	0.7	1.2
Gone abroad	8.5	8.5	9.3	7.4	3.4	12.9	8.8	12.4	12.3
Claimed Income Support	3.0	3.0	0.8	1.7	0.0	0.8	1.8	2.0	2.2
Claimed Incapacity Benefit	2.0	2.0	1.5	2.9	1.7	0.8	1.9	1.2	1.1
Claimed another benefit	2.0	3.0	3.1	5.1	5.2	2.3	3.2	2.3	2.2
Gone to full-time education	0.0	1.0	0.0	0.0	0.0	0.8	0.3	3.6	3.0
Gone onto approved training	0.0	0.0	0.0	0.6	0.0	0.0	0.1	0.1	0.1
Transfer to Govt-supported training	0.0	4.0	0.4	0.0	0.0	0.8	1.0	0.8	2.1
Retirement age reached	0.0	0.0	0.0	0.6	0.0	0.0	0.1	0.1	0.1
Automatic credits payable	0.0	0.0	0.0	0.0	0.0	0.0	0.0	0.0	0.0
Claimed back-to-work bonus	0.0	0.0	0.0	0.0	0.0	0.0	0.0	0.0	0.0
Gone to prison	1.0	0.5	5.8	1.7	1.7	0.8	2.2	1.7	1.5
Attending court	0.0	0.0	0.0	0.0	0.0	0.0	0.0	0.0	0.0
New claim review	1.0	0.5	0.0	1.1	0.0	1.5	0.7	1.4	1.6
Defective claim	0.0	0.5	0.0	0.0	0.0	0.0	0.1	2.4	1.3
Ceased claiming	6.5	6.5	5.8	4.0	10.3	9.8	6.5	4.0	4.5
Deceased	0.0	0.0	0.0	0.0	0.0	0.0	0.0	0.0	0.0

Note: Proportions are of those who gave a reason for leaving the register (ie total does not include failed to sign or not known)

NOTIFIED VACANCIES BY INDUSTRY – Aug 2011

Table 8a

Industry	Area							Cumbria	
	Allerdale	Barrow	Carlisle	Copeland	Eden	South Lakeland	Cumbria	Monthly Change	Annual Change
Agriculture & Fishing	#	0	#	0	#	#	5	-4	-2
Energy & Water	#	0	0	#	10	0	12	9	-16
Manufacturing	8	20	15	3	7	24	76	42	-27
Construction	4	13	10	#	8	10	47	-9	-50
Retail, Hotels & Restaurants	126	43	110	65	76	167	587	77	-125
Transport & Comms	3	9	11	5	14	#	44	8	-13
Business Activities & Finance	137	65	338	130	204	224	1,097	38	-89
Public Administration	40	14	44	13	28	260	400	-156	41
Other Service	4	#	28	3	3	36	76	31	-10
Total	324	165	558	223	351	724	2,344	35	-292
<i>Total Monthly Change</i>	<i>50</i>	<i>-13</i>	<i>-31</i>	<i>29</i>	<i>82</i>	<i>-81</i>	<i>35</i>		
<i>Total Annual Change</i>	<i>-82</i>	<i>-32</i>	<i>-232</i>	<i>-9</i>	<i>51</i>	<i>14</i>	<i>-292</i>		

NB: Reporting months are now on a standardised 4 1/3 basis in order to smooth out variations due to differing time periods.

LIVE UNFILLED VACANCIES BY INDUSTRY – Aug 2011

Table 8b

Industry	Area							Cumbria	
	Allerdale	Barrow	Carlisle	Copeland	Eden	South Lakeland	Cumbria	Monthly Change	Annual Change
Agriculture & Fishing	1	0	1	0	1	1	4	0	-1
Energy & Water	1	0	0	1	2	0	4	1	3
Manufacturing	5	3	10	2	3	15	38	12	-5
Construction	3	18	19	2	1	9	52	7	-70
Retail, Hotels & Restaurants	80	32	158	46	65	131	512	28	-48
Transport & Comms	2	5	3	1	11	1	23	2	-17
Business Activities & Finance	108	40	299	62	178	159	846	84	25
Public Administration	33	5	32	10	24	77	181	-27	-50
Other Service	3	0	19	3	2	26	53	25	-2
Total	236	103	541	127	287	419	1,713	132	-165
<i>Total Monthly Change</i>	<i>22</i>	<i>-8</i>	<i>18</i>	<i>-9</i>	<i>64</i>	<i>45</i>	<i>132</i>		
<i>Total Annual Change</i>	<i>-108</i>	<i>-47</i>	<i>58</i>	<i>-85</i>	<i>74</i>	<i>-57</i>	<i>-165</i>		

Note: The JobCentre Plus vacancies dataset does not provide comprehensive measures relating to all vacancies in the economy. The proportion of vacancies which are notified by employers varies over time, according to the occupation and industry of the area and labour market conditions. Notified vacancies are those placed with JobCentre Plus during the month, Live Unfilled vacancies are those for which a jobseeker can actively apply on the day the count is taken.

JSA CLAIMANT TO VACANCY RATIO - Aug 2011

Vacancy data can be used in conjunction with the claimant count to calculate a simple 'claimant to vacancy ratio'. This uses the number of live unfilled vacancies in a month, together with the number of claimants. A claimant/vacancy figure of more than 1 means that there are more claimants than live vacancies.

Table 9

	Claimant count	Live vacancies	Claimant/vacancy ratio
Great Britain	1,515,030	272,951	5.55
Cumbria	8,729	1,713	5.10
Allerdale	1,897	236	8.04
Barrow in Furness	1,844	103	17.90
Carlisle	2,106	541	3.89
Copeland	1,648	127	12.98
Eden	401	287	1.40
South Lakeland	833	419	1.99

Note: The JobCentre Plus vacancies dataset does not provide comprehensive measures relating to all vacancies in the economy. The proportion of vacancies which are notified by employers varies over time, according to the occupation and industry of the area and labour market conditions. Notified vacancies are those placed with JobCentre Plus during the month, Live Unfilled vacancies are those for which a jobseeker can actively apply on the day the count is taken.

For definitions of areas or for further information, please contact
Ginny Murphy, Research Officer, Cumbria County Council
Tel: 01228 226753 E-mail: ginny.murphy@cumbria.gov.uk

Copies of previous releases, together with other labour market and economic data, can be found on the following website: www.cumbriaobservatory.org.uk

Labour Market Briefing

September 2011

RESIDENCE-BASED JSA CLAIMANT COUNTS & RATES – Jun 2011

Locally Defined Areas

	Locally Defined Areas									
	Male		Female		All Persons		All Persons			
	No	Rate	No	Rate	No	Rate	Monthly Change		Annual Change	
							No	Rate	No	Rate
Key Service Centres										
Alston KSC	24	3.5	12	1.8	36	2.7	2	0.1	15	1.1
Ambleside KSC	7	0.6	4	0.3	11	0.5	1	0.0	-6	-0.3
Appleby KSC	19	2.2	#	#	21	1.2	2	0.1	-8	-0.5
Aspatia KSC	50	4.7	27	2.5	77	3.6	4	0.2	7	0.3
Barrow KSC	1,109	6.1	530	2.9	1,639	4.5	50	0.1	216	0.6
Brampton KSC	55	4.2	22	1.6	77	2.9	10	0.4	-9	-0.3
Brough KSC	7	1.7	3	0.7	10	1.2	-1	-0.1	1	0.1
Carlisle KSC	1,180	5.1	566	2.4	1,746	3.8	24	0.1	150	0.3
Cleator Moor KSC	151	6.9	64	2.9	215	4.9	-6	-0.1	26	0.6
Cockermouth KSC	72	3.0	36	1.4	108	2.2	-2	0.0	22	0.4
Dalton in Furness KSC	145	3.5	60	1.5	205	2.5	2	0.0	29	0.4
Egremont KSC	141	5.4	58	2.3	199	3.9	7	0.1	31	0.6
Grange KSC	10	1.0	10	1.0	20	1.0	3	0.1	-8	-0.4
Grasmere KSC	#	#	#	#	3	0.3	#	0.2	0	0.0
Hawkshead KSC	7	1.3	#	#	9	0.9	0	0.0	3	0.3
Kendal KSC	210	2.5	108	1.2	318	1.8	12	0.1	33	0.2
Keswick KSC	20	1.3	20	1.3	40	1.3	5	0.2	11	0.3
Kirkby Lonsdale KSC	7	1.1	#	#	8	0.6	-1	-0.1	1	0.1
Kirkby Stephen KSC	12	1.6	3	0.4	15	1.0	-8	-0.5	-10	-0.7
Lazonby KSC	6	1.4	4	0.9	10	1.1	1	0.1	4	0.4
Longtown KSC	47	3.4	27	2.1	74	2.8	13	0.5	27	1.0
Maryport KSC	283	7.7	102	2.7	385	5.2	-1	0.0	23	0.3
Millom KSC	113	4.0	48	2.1	161	3.2	-3	-0.1	13	0.3
Milnthorpe KSC	10	1.7	8	1.3	18	1.5	1	0.1	8	0.7
Penrith KSC	115	2.5	50	1.1	165	1.8	4	0.0	7	0.1
Sedbergh KSC	10	0.8	6	0.6	16	0.7	5	0.2	0	0.0
Silloth KSC	35	3.9	13	1.4	48	2.6	4	0.2	11	0.6
Ulverston KSC	117	3.3	67	1.9	184	2.6	0	0.0	-9	-0.1
Whitehaven KSC	455	5.6	178	2.2	633	3.9	4	0.0	31	0.2
Wigton KSC	59	3.5	37	2.1	96	2.8	-8	-0.2	27	0.8
Windermere KSC	44	1.6	12	0.5	56	1.1	8	0.2	15	0.3
Workington KSC	580	7.6	238	3.1	818	5.4	17	0.1	127	0.8
Housing Market Areas										
Alston Moor HMA	24	3.5	12	1.8	36	2.7	2	0.1	15	1.1
Barrow HMA	1,254	5.6	590	2.6	1,844	4.1	52	0.1	245	0.5
Carlisle HMA	1,193	5.1	570	2.4	1,763	3.7	21	0.0	147	0.3
Central Lakes HMA	69	1.1	24	0.4	93	0.8	16	0.1	15	0.1
Cockermouth HMA	72	3.0	36	1.4	108	2.2	-2	0.0	22	0.4
Eden Valley North HMA	156	1.9	81	1.0	237	1.4	12	0.1	22	0.1
Eden Valley South HMA	74	1.4	26	0.5	100	0.9	-16	-0.1	-16	-0.1
Kendal HMA	210	2.5	108	1.2	318	1.8	12	0.1	33	0.2
Millom HMA	113	4.0	48	2.1	161	3.2	-3	-0.1	13	0.3
North Lakes - East HMA	20	1.1	8	0.4	28	0.8	2	0.1	4	0.1
North Lakes - West HMA	35	1.1	28	0.9	63	1.0	9	0.1	16	0.3
Rural Carlisle East HMA	166	2.2	104	1.4	270	1.8	37	0.2	42	0.3
Rural Carlisle West HMA	47	1.8	26	1.0	73	1.4	10	0.2	-4	-0.1
Rural Kendal HMA	71	1.0	35	0.5	106	0.8	3	0.0	11	0.1
Sedbergh HMA	10	0.8	6	0.6	16	0.7	5	0.2	0	0.0
Ulverston and Furness HMA	156	2.6	91	1.5	247	2.1	5	0.0	-10	-0.1
West Lakes HMA	38	1.5	30	1.3	68	1.4	7	0.1	4	0.1
Whitehaven HMA	1,001	5.7	418	2.4	1,419	4.1	28	0.1	188	0.5
Wigton HMA	79	2.0	60	1.5	139	1.8	-11	-0.1	25	0.3
Workington and Maryport HMA	1,130	5.7	457	2.3	1,587	4.0	41	0.1	151	0.4

Labour Market Briefing

September 2011

Locally Defined Areas										
	Male		Female		All Persons		All Persons			
	No	Rate	No	Rate	No	Rate	Monthly Change		Annual Change	
							No	Rate	No	Rate
Children's' Services Local Delivery Project Areas										
Alston CS LDP	24	3.5	12	1.8	36	2.7	2	0.1	15	1.1
Brampton CS LDP	179	2.2	108	1.3	287	1.8	34	0.2	39	0.2
Cleator Moor & Egremont CS LDP	469	5.0	198	2.2	667	3.6	26	0.1	110	0.6
Carlisle North CS LDP	97	2.6	44	1.2	141	1.9	-1	0.0	13	0.2
Carlisle South CS LDP	571	5.9	275	2.8	846	4.3	-1	0.0	77	0.4
Carlisle West CS LDP	525	5.1	249	2.4	774	3.7	25	0.1	54	0.3
Cockermouth & Keswick CS LDP	126	1.8	82	1.2	208	1.5	10	0.1	26	0.2
Dalston CS LDP	34	1.8	24	1.3	58	1.5	11	0.3	2	0.1
Furness CS LDP	1,410	5.0	681	2.4	2,091	3.7	57	0.1	235	0.4
Grange CS LDP	29	1.1	22	0.9	51	1.0	10	0.2	3	0.1
Kendal CS LDP	233	2.2	112	1.1	345	1.6	7	0.0	34	0.2
Kirkby Lonsdale CS LDP	7	1.1	#	#	8	0.6	-1	-0.1	1	0.1
Lakes CS LDP	18	0.6	8	0.3	26	0.5	5	0.1	-4	-0.1
Maryport CS LDP	315	6.7	115	2.4	430	4.5	1	0.0	6	0.1
Middle Eden CS LDP	40	1.3	18	0.6	58	1.0	-4	-0.1	-4	-0.1
Milnthorpe CS LDP	41	0.9	30	0.7	71	0.8	9	0.1	9	0.1
North Allerdale CS LDP	204	2.5	119	1.5	323	2.0	5	0.0	44	0.3
Penrith CS LDP	180	1.8	86	0.9	266	1.3	14	0.1	29	0.1
Sedbergh CS LDP	10	0.8	6	0.6	16	0.7	5	0.2	0	0.0
South Copeland CS LDP	124	3.3	61	2.0	185	2.7	-1	0.0	19	0.3
Upper Eden CS LDP	30	1.3	11	0.5	41	0.9	-12	-0.3	-15	-0.3
Whitehaven CS LDP	559	5.7	237	2.4	796	4.1	7	0.0	76	0.4
Windermere CS LDP	52	1.6	17	0.5	69	1.1	4	0.1	19	0.3
Workington CS LDP	671	6.9	265	2.7	936	4.8	21	0.1	138	0.7
Health Areas										
Carlisle City South (Health)	1,083	5.6	522	2.7	1,605	4.1	25	0.1	137	0.4
Cockermouth & Keswick (Health)	126	1.8	82	1.2	208	1.5	10	0.1	26	0.2
Maryport (Health)	315	6.7	115	2.4	430	4.5	1	0.0	6	0.1
Mid Copeland (Health)	469	5.0	198	2.2	667	3.6	26	0.1	110	0.6
North Allerdale (Health)	204	2.5	119	1.5	323	2.0	5	0.0	44	0.3
South Copeland (Health)	124	3.3	61	2.0	185	2.7	-1	0.0	19	0.3
Whitehaven (Health)	559	5.7	237	2.4	796	4.1	7	0.0	76	0.4
Workington (Health)	671	6.9	265	2.7	936	4.8	21	0.1	138	0.7
West Cumbria Partnership Areas										
Cleator Moor WCP	247	6.3	103	2.7	350	4.5	6	0.1	51	0.7
Cockermouth WCP	103	2.2	58	1.2	161	1.7	3	0.0	12	0.1
Egremont WCP	201	4.9	82	2.1	283	3.5	17	0.2	54	0.7
Keswick WCP	23	1.1	24	1.2	47	1.1	7	0.2	14	0.3
Maryport WCP	315	6.7	115	2.4	430	4.5	1	0.0	6	0.1
Mid Copeland WCP	21	1.7	13	1.1	34	1.4	3	0.1	5	0.2
Millom WCP	124	3.3	61	2.0	185	2.7	-1	0.0	19	0.3
North Allerdale WCP	204	2.5	119	1.5	323	2.0	5	0.0	44	0.3
Whitehaven WCP	559	5.7	237	2.4	796	4.1	7	0.0	76	0.4
Workington WCP	671	6.9	265	2.7	936	4.8	21	0.1	138	0.7
Other Areas										
Lake District National Park	198	1.2	105	0.7	303	1.0	25	0.1	38	0.1
Keswick Market Town Initiative	23	1.1	24	1.2	47	1.1	7	0.2	14	0.3
Longtown Market Town Initiative	57	2.8	36	1.9	93	2.3	17	0.4	33	0.8
Penrith Market Town Initiative	195	1.7	98	0.9	293	1.3	8	0.0	32	0.1
Ulverston Market Town Initiative	141	2.7	89	1.7	230	2.2	4	0.0	-7	-0.1

NB: Counts of less than 3 are denoted by a #. Wards are Census 2003 wards.

Note 1: Rates are of the Working Age Population.

Note 2: Please note that the definition of working age is now 16-65 for both males and females.

RESIDENCE-BASED JSA CLAIMANT COUNTS & RATES – Jun 2011

Wards

WARD	Male		Female		All Persons		All Persons			
	No	Rate	No	Rate	No	Rate	Monthly Change		Annual Change	
							No	Rate	No	Rate
ALLERDALE										
All Saints	48	3.4	26	1.7	74	2.5	-4	-0.1	23	0.8
Aspatria	50	4.7	27	2.5	77	3.6	4	0.2	7	0.3
Boltons	7	1.3	3	0.5	10	0.9	2	0.2	3	0.3
Broughton St Bridget's	21	1.6	18	1.3	39	1.5	4	0.1	-8	-0.3
Christchurch	24	2.4	10	1.0	34	1.7	2	0.1	-1	-0.1
Clifton	23	4.7	11	2.2	34	3.4	5	0.5	3	0.3
Crummock	5	1.0	#	#	6	0.6	0	0.0	-1	-0.1
Dalton	5	1.0	3	0.6	8	0.8	1	0.1	-1	-0.1
Derwent Valley	3	0.6	4	0.8	7	0.7	2	0.2	3	0.3
Ellen	32	3.2	13	1.3	45	2.2	2	0.1	-17	-0.8
Ellenborough	67	5.8	25	2.1	92	4.0	-1	0.0	-8	-0.3
Ewanrigg	107	10.7	37	3.4	144	6.9	9	0.4	23	1.1
Flimby	41	7.5	13	2.4	54	4.9	-3	-0.3	15	1.4
Harrington	34	3.6	10	1.1	44	2.4	0	0.0	-3	-0.2
Holme	15	2.8	4	0.8	19	1.9	3	0.3	-9	-0.9
Keswick	20	1.3	20	1.3	40	1.3	5	0.2	11	0.3
Marsh	5	1.0	4	0.8	9	0.9	-2	-0.2	-2	-0.2
Moorclose	125	9.1	58	3.8	183	6.3	6	0.2	22	0.8
Moss Bay	166	12.8	70	4.9	236	8.7	-7	-0.3	35	1.3
Netherhall	68	7.0	27	2.8	95	4.9	-6	-0.3	-7	-0.4
Seaton	68	4.4	16	1.0	84	2.7	-1	0.0	8	0.3
Silloth	35	3.9	13	1.4	48	2.6	4	0.2	11	0.6
Solway	7	1.4	9	1.7	16	1.6	2	0.2	5	0.5
St John's	85	5.0	29	1.8	114	3.5	2	0.1	23	0.7
St Michael's	161	9.1	64	4.0	225	6.7	18	0.5	46	1.4
Stainburn	9	1.6	7	1.3	16	1.4	-2	-0.2	4	0.4
Wampool	6	1.1	9	1.8	15	1.4	-1	-0.1	5	0.5
Warnell	5	0.8	4	0.7	9	0.8	2	0.2	0	0.0
Waver	4	0.7	6	1.0	10	0.8	-2	-0.2	-5	-0.4
Wharrels	11	2.1	3	0.6	14	1.4	1	0.1	2	0.2
Wigton	59	3.5	37	2.1	96	2.8	-8	-0.2	27	0.8
BARROW										
Barrow Island	127	14.3	46	5.8	173	10.3	15	0.9	27	1.6
Central	200	12.0	96	5.8	296	8.9	-4	-0.1	43	1.3
Dalton North	65	3.0	25	1.2	90	2.1	2	0.0	8	0.2
Dalton South	80	4.1	35	1.8	115	2.9	0	0.0	21	0.5
Hawcoat	24	1.7	12	0.9	36	1.3	-2	-0.1	6	0.2
Hindpool	157	9.3	69	4.0	226	6.6	4	0.1	13	0.4
Newbarns	76	4.0	28	1.5	104	2.8	4	0.1	6	0.2
Ormsgill	149	7.8	75	3.7	224	5.7	8	0.2	29	0.7
Parkside	64	3.6	36	2.1	100	2.8	2	0.1	18	0.5
Risedale	116	6.4	65	3.8	181	5.1	18	0.5	24	0.7
Roosecote	51	2.7	45	2.3	96	2.5	-2	-0.1	20	0.5
Walney North	80	5.0	29	1.7	109	3.3	1	0.0	19	0.6
Walney South	65	3.6	29	1.7	94	2.7	6	0.2	11	0.3

NB: Counts of less than 3 are denoted by a #. Wards are Census 2003 wards.

Note 1: Rates are of the Working Age Population.

Note 2: Please note that the definition of working age is now 16-65 for both males and females.

Labour Market Briefing

September 2011

WARD	Male		Female		All Persons		All Persons			
	No	Rate	No	Rate	No	Rate	Monthly Change		Annual Change	
							No	Rate	No	Rate
CARLISLE										
Belah	65	3.4	25	1.3	90	2.4	-3	-0.1	8	0.2
Belle Vue	97	5.4	52	2.6	149	3.9	5	0.1	20	0.5
Botcherby	135	7.2	57	2.7	192	4.9	-5	-0.1	6	0.2
Brampton	55	4.2	22	1.6	77	2.9	10	0.4	-9	-0.3
Burgh	13	1.8	#	#	15	1.1	-1	-0.1	-6	-0.4
Castle	159	7.0	66	3.3	225	5.3	5	0.1	7	0.2
Currock	120	5.9	58	2.9	178	4.4	10	0.2	20	0.5
Dalston	34	1.8	24	1.3	58	1.5	11	0.3	2	0.1
Denton Holme	102	4.8	62	2.9	164	3.9	1	0.0	1	0.0
Great Corby and Geltsdale	15	2.1	5	0.7	20	1.4	0	0.0	6	0.4
Harraby	73	3.8	42	2.2	115	3.0	-2	-0.1	21	0.5
Hayton	13	2.1	4	0.7	17	1.4	-3	-0.2	-3	-0.2
Irthing	8	1.3	4	0.6	12	1.0	0	0.0	-3	-0.2
Longtown & Rockcliffe	47	3.4	27	2.1	74	2.8	13	0.5	27	1.0
Lyne	10	1.5	9	1.4	19	1.5	4	0.3	6	0.5
Morton	106	6.7	38	2.3	144	4.4	9	0.3	24	0.7
St Aidans	102	4.7	62	2.9	164	3.8	-10	-0.2	10	0.2
Stanwix Rural	14	1.0	21	1.5	35	1.2	3	0.1	7	0.2
Stanwix Urban	32	1.8	19	1.0	51	1.4	2	0.1	5	0.1
Upperby	141	8.6	56	3.3	197	5.9	6	0.2	20	0.6
Wetheral	17	1.3	16	1.1	33	1.2	7	0.3	8	0.3
Yewdale	48	2.5	29	1.6	77	2.1	6	0.2	8	0.2
COPELAND										
Arlecdon	17	3.1	6	1.2	23	2.2	-1	-0.1	8	0.8
Beckermet	47	5.0	17	1.9	64	3.5	7	0.4	18	1.0
Bootle	6	1.6	7	1.7	13	1.6	0	0.0	3	0.4
Bransty	40	2.3	25	1.5	65	1.9	-2	-0.1	6	0.2
Cleator Moor North	88	6.5	40	3.0	128	4.8	-3	-0.1	7	0.3
Cleator Moor South	63	7.5	24	2.7	87	5.1	-3	-0.2	19	1.1
Distington	91	7.2	48	3.7	139	5.4	3	0.1	38	1.5
Egremont North	75	5.5	29	2.0	104	3.7	2	0.1	13	0.5
Egremont South	66	5.4	29	2.6	95	4.1	5	0.2	18	0.8
Ennerdale	6	1.7	4	1.3	10	1.5	2	0.3	-7	-1.0
Frizington	73	8.6	29	3.6	102	6.1	11	0.7	24	1.4
Gosforth	4	1.0	6	1.5	10	1.2	2	0.2	4	0.5
Harbour	112	7.9	29	2.5	141	5.5	3	0.1	2	0.1
Haverigg	15	1.5	7	1.8	22	1.6	2	0.1	12	0.9
Hensingham	62	4.9	23	1.7	85	3.2	5	0.2	-7	-0.3
Hillcrest	22	2.5	6	0.7	28	1.7	2	0.1	10	0.6
Holborn Hill	37	4.9	17	2.1	54	3.5	0	0.0	0	0.0
Kells	33	4.4	17	2.2	50	3.3	3	0.2	16	1.1
Millom Without	5	1.0	6	1.4	11	1.2	2	0.2	3	0.3
Mirehouse	113	8.4	45	3.2	158	5.7	3	0.1	9	0.3
Moresby	13	3.3	11	2.6	24	2.9	0	0.0	7	0.9
Newtown	61	5.5	24	2.3	85	3.9	-5	-0.2	1	0.0
Sandwith	73	9.1	33	3.9	106	6.4	-10	-0.6	-5	-0.3
Seascale	17	2.0	7	0.9	24	1.5	1	0.1	1	0.1
St Bees	13	2.2	7	1.3	20	1.7	3	0.3	5	0.4

NB: Counts of less than 3 are denoted by a #. Wards are Census 2003 wards.

Note 1: Rates are of the Working Age Population.

Note 2: Please note that the definition of working age is now 16-65 for both males and females.

Labour Market Briefing September 2011

WARD	Male		Female		All Persons		All Persons			
							Monthly Change		Annual Change	
	No	Rate	No	Rate	No	Rate	No	Rate		
EDEN										
Alston Moor	24	3.5	12	1.8	36	2.7	2	0.1	15	1.1
Appleby (Appleby)	7	2.1	#	#	8	1.2	1	0.1	-5	-0.7
Appleby (Bongate)	12	2.3	#	#	13	1.2	1	0.1	-3	-0.3
Askham	7	1.6	6	1.3	13	1.4	4	0.4	8	0.9
Brough	7	1.7	3	0.7	10	1.2	-1	-0.1	1	0.1
Crosby Ravensworth	5	1.1	#	#	6	0.6	2	0.2	-2	-0.2
Dacre	4	1.0	3	0.7	7	0.8	1	0.1	1	0.1
Eamont	9	2.3	3	0.7	12	1.5	-1	-0.1	7	0.9
Greystoke	3	0.7	#	#	4	0.5	#	0.2	1	0.1
Hartside	5	1.4	6	1.6	11	1.5	-1	-0.1	4	0.6
Hesket	8	0.9	6	0.6	14	0.7	0	0.0	-4	-0.2
Kirkby Stephen	12	1.6	3	0.4	15	1.0	-8	-0.5	-10	-0.7
Kirkby Thore	7	1.4	6	1.2	13	1.3	-6	-0.6	0	0.0
Kirkoswald	9	1.9	3	0.7	12	1.3	3	0.3	3	0.3
Langwathby	5	1.0	6	1.2	11	1.1	3	0.3	6	0.6
Lazonby	6	1.4	4	0.9	10	1.1	1	0.1	4	0.4
Long Marton	#	#	3	0.8	4	0.5	-2	-0.3	#	0.4
Morland	3	0.7	0	0.0	3	0.4	#	0.1	-1	-0.1
Orton with Tebay	7	1.5	3	0.6	10	1.1	0	0.0	3	0.3
Penrith Carleton	10	2.2	4	0.8	14	1.5	1	0.1	4	0.4
Penrith East	24	3.0	6	0.8	30	1.9	0	0.0	3	0.2
Penrith North	27	2.2	17	1.4	44	1.8	8	0.3	0	0.0
Penrith Pategill	7	2.1	6	1.5	13	1.7	-1	-0.1	0	0.0
Penrith South	20	2.9	8	1.2	28	2.0	-2	-0.1	13	1.0
Penrith West	27	2.5	9	0.9	36	1.7	-2	-0.1	-13	-0.6
Ravenstonedale	#	#	0	0.0	#	#	#	-0.3	#	-1.0
Shap	6	1.2	0	0.0	6	0.7	-3	-0.3	-5	-0.5
Skelton	4	0.8	3	0.7	7	0.7	1	0.1	1	0.1
Ullswater	4	0.9	#	#	5	0.5	-1	-0.1	0	0.0
Warcop	3	0.7	#	#	5	0.6	-1	-0.1	-3	-0.3

NB: Counts of less than 3 are denoted by a #. Wards are Census 2003 wards.

Note 1: Rates are of the Working Age Population.

Note 2: Please note that the definition of working age is now 16-65 for both males and females.

Labour Market Briefing

September 2011

WARD	Male		Female		All Persons		All Persons			
	No	Rate	No	Rate	No	Rate	Monthly Change		Annual Change	
							No	Rate	No	Rate
SOUTH LAKELAND										
Arnside & Beetham	14	1.3	3	0.3	17	0.8	5	0.2	3	0.1
Broughton	15	2.2	#	#	17	1.3	1	0.1	-3	-0.2
Burneside	8	1.4	3	0.5	11	0.9	-2	-0.2	-2	-0.2
Burton & Holme	5	0.6	3	0.3	8	0.5	2	0.1	1	0.1
Cartmel	4	0.8	5	1.0	9	0.9	3	0.3	1	0.1
Coniston	#	#	#	#	3	0.3	#	0.2	-1	-0.1
Crake Valley	6	1.0	6	1.1	12	1.0	0	0.0	-5	-0.4
Crooklands	4	0.6	7	1.0	11	0.8	3	0.2	-3	-0.2
Grange	10	1.0	10	1.0	20	1.0	3	0.1	-8	-0.4
Hawkshead	7	1.3	#	#	9	0.9	0	0.0	3	0.3
Holker	8	1.5	3	0.6	11	1.1	1	0.1	6	0.6
Kendal Castle	8	1.8	3	0.6	11	1.2	-3	-0.3	-1	-0.1
Kendal Far Cross	16	2.3	9	1.2	25	1.7	5	0.3	3	0.2
Kendal Fell	24	4.0	8	1.4	32	2.7	0	0.0	-7	-0.6
Kendal Glebelands	4	0.7	6	1.0	10	0.9	-2	-0.2	-7	-0.6
Kendal Heron Hill	11	1.8	#	#	13	1.1	-3	-0.3	4	0.3
Kendal Highgate	22	4.0	10	2.0	32	3.1	0	0.0	1	0.1
Kendal Kirkland	19	3.1	11	1.7	30	2.4	1	0.1	4	0.3
Kendal Mintsfeet	24	3.6	12	1.8	36	2.7	4	0.3	6	0.5
Kendal Nether	4	0.8	3	0.6	7	0.7	-1	-0.1	-7	-0.7
Kendal Oxenholme	24	3.1	8	1.0	32	2.1	9	0.6	9	0.6
Kendal Parks	8	1.1	7	1.0	15	1.0	0	0.0	6	0.4
Kendal Stonecross	13	2.6	8	1.5	21	2.0	2	0.2	8	0.8
Kendal Strickland	10	1.5	5	0.7	15	1.1	2	0.1	6	0.4
Kendal Underley	23	3.5	16	2.3	39	2.9	-2	-0.1	8	0.6
Kirkby Lonsdale	7	1.1	#	#	8	0.6	-1	-0.1	1	0.1
Lakes Ambleside	7	0.6	4	0.3	11	0.5	1	0.0	-6	-0.3
Lakes Grasmere	#	#	#	#	3	0.3	#	0.2	0	0.0
Levens	3	0.7	4	0.8	7	0.7	2	0.2	0	0.0
Low Furness & Swarthmoor	18	1.5	16	1.2	34	1.4	4	0.2	7	0.3
Lyth Valley	5	0.8	5	0.7	10	0.8	-4	-0.3	0	0.0
Milnthorpe	10	1.7	8	1.3	18	1.5	1	0.1	8	0.7
Natland	5	0.9	0	0.0	5	0.4	-3	-0.3	-1	-0.1
Sedbergh	10	0.8	6	0.6	16	0.7	5	0.2	0	0.0
Staveley-in-Cartmel	7	1.3	4	0.8	11	1.1	3	0.3	4	0.4
Staveley-in-Westmorland	8	1.3	5	0.8	13	1.1	-4	-0.3	4	0.3
Ulverston Central	22	3.8	14	2.5	36	3.2	0	0.0	0	0.0
Ulverston East	31	4.5	19	2.7	50	3.6	2	0.1	-5	-0.4
Ulverston North	17	2.8	10	1.6	27	2.2	1	0.1	3	0.2
Ulverston South	9	1.7	9	1.7	18	1.7	-4	-0.4	-3	-0.3
Ulverston Town	25	4.4	12	2.2	37	3.3	-3	-0.3	-5	-0.4
Ulverston West	13	2.4	3	0.6	16	1.5	4	0.4	1	0.1
Whinfell	10	1.4	#	#	11	0.7	0	0.0	4	0.3
Windermere Applethwaite	7	1.0	3	0.5	10	0.7	0	0.0	-1	-0.1
Windermere Bowness North	10	1.7	3	0.5	13	1.1	2	0.2	4	0.3
Windermere Bowness South	8	1.2	5	0.8	13	1.0	3	0.2	4	0.3
Windermere Town	19	2.6	#	#	20	1.4	3	0.2	8	0.5

NB: Counts of less than 3 are denoted by a #. Wards are Census 2003 wards.

Note 1: Rates are of the Working Age Population.

Note 2: Please note that the definition of working age is now 16-65 for both males and females.