

Labour Market Briefing August 2011

The July 2011 unemployment and vacancy figures were released by the Office for National Statistics on 17th August 2011. The JSA Claimant Count was taken on 14th July 2011 and the vacancy count was for the month to 8th July 2011.

The JSA Claimant Count & Rate (not seasonally adjusted)

The JSA claimant *count* in Cumbria rose by 308 between June and July 2011 to 8,496. This non-seasonally adjusted figure also rose both regionally and nationally (see “other measures of joblessness” for the seasonally adjusted national figure). The claimant count rose in all districts. Between the same two months last year, the count in Cumbria rose by 67 people. The JSA claimant *rate* in Cumbria in July 2011 was up 0.1 at 2.7%. The rate was also up by 0.1 regionally and nationally but remains higher than locally at 4.3% and 3.8% respectively.

Compared to a year ago, the JSA claimant count in Cumbria is 857 higher, a rise of 11.2% over the year. It is also higher nationally than a year ago but by a smaller margin, 7.0%. The claimant *rate* in Cumbria is up by 0.3 compared to a year ago, the national rate is up by 0.2 compared to a year ago.

Almost a third of all claimants, 2,705, were young people aged 16-24, a rise of 285 from last month. This represents 5.4% of all people in this age group which is lower than the national average of 6.1% but is double the rate for the population as a whole in Cumbria. However, rates in Barrow (7.6%) and Copeland (7.7%) were higher than nationally.

Other Measures of Joblessness

These figures are often quoted by the national press but are not available for local areas. They are provided here for information but should not directly be compared with those above as the methodology used to compile them is different.

The jobless total for the UK (claimants and non claimants looking for work) rose by 38,000 over the quarter ending June 2011 to 2.49 million. The jobless rate rose by 0.1 over the quarter to 7.9%. Similar figures using the wider definition of joblessness are not available at local level.

The seasonally adjusted claimant count for the UK was 1,564,000 in July 2011, up by 37,100 over the previous month, the biggest monthly rise since May 2009. Comparable seasonally adjusted figures are not available at local level.

Notified Vacancies

The number of new vacancies notified to JobCentre Plus in Cumbria in the month to 8th July 2011 was 2,309 a rise of 62 compared to the number notified in June but 317 fewer than were notified in the same month last year.

Note: We have now changed to using a standardised 4 1/3 week period for notified vacancies which removes the issue of comparability between 4 and 5 week periods.

JSA Claimant to Vacancy Ratio

The ratio of claimants to *live unfilled* vacancies in Cumbria was 5.37 in July 2011 (GB 5.67). The ratio was especially high in Barrow (16.14) and Copeland (11.88).

RESIDENCE-BASED CLAIMANT COUNTS & RATES – July 2011

Table 1

| National, County, Districts, Travel to Work Areas & Parliamentary Constituencies | | | | | | | | | | |
|--|-----------|------|---------|------|-------------|------|----------------|------|---------------|------|
| | Male | | Female | | All Persons | | All Persons | | | |
| | No | Rate | No | Rate | No | Rate | Monthly Change | | Annual Change | |
| | No | Rate | No | Rate | No | Rate | No | Rate | No | Rate |
| Cumbria | 5,790 | 3.7 | 2,706 | 1.8 | 8,496 | 2.7 | 308 | 0.1 | 857 | 0.3 |
| North West | 130,141 | 5.8 | 60,555 | 2.7 | 190,696 | 4.3 | 5,880 | 0.1 | 13,629 | 0.3 |
| United Kingdom | 1,027,192 | 5.1 | 514,601 | 2.5 | 1,541,793 | 3.8 | 48,716 | 0.1 | 100,758 | 0.2 |
| Great Britain | 984,471 | 5.0 | 496,687 | 2.5 | 1,481,158 | 3.8 | 46,785 | 0.1 | 97,168 | 0.2 |
| <i>District</i> | | | | | | | | | | |
| Allerdale | 1,270 | 4.4 | 590 | 2.0 | 1,860 | 3.2 | 46 | 0.1 | 237 | 0.4 |
| Barrow in Furness | 1,220 | 5.5 | 572 | 2.6 | 1,792 | 4.0 | 35 | 0.1 | 222 | 0.5 |
| Carlisle | 1,365 | 4.1 | 673 | 2.0 | 2,038 | 3.0 | 72 | 0.1 | 104 | 0.2 |
| Copeland | 1,136 | 5.0 | 480 | 2.2 | 1,616 | 3.6 | 69 | 0.2 | 200 | 0.4 |
| Eden | 282 | 1.8 | 119 | 0.7 | 401 | 1.3 | 32 | 0.1 | 32 | 0.1 |
| South Lakeland | 517 | 1.7 | 272 | 0.9 | 789 | 1.3 | 54 | 0.1 | 62 | 0.1 |
| <i>Travel to Work Area</i> | | | | | | | | | | |
| Barrow in Furness | 1,373 | 4.7 | 661 | 2.3 | 2,034 | 3.5 | 52 | 0.1 | 235 | 0.4 |
| Carlisle | 1,612 | 3.8 | 809 | 1.9 | 2,421 | 2.8 | 105 | 0.1 | 128 | 0.2 |
| Kendal | 364 | 1.4 | 183 | 0.7 | 547 | 1.1 | 37 | 0.1 | 49 | 0.1 |
| Penrith & Appleby | 254 | 1.7 | 105 | 0.7 | 359 | 1.2 | 24 | 0.1 | 27 | 0.1 |
| Whitehaven | 1,074 | 4.8 | 451 | 2.1 | 1,525 | 3.5 | 62 | 0.1 | 173 | 0.4 |
| Workington & Keswick | 1,206 | 4.8 | 535 | 2.1 | 1,741 | 3.5 | 38 | 0.1 | 242 | 0.5 |
| Lancaster & Morecambe | 1,848 | 3.9 | 876 | 1.8 | 2,724 | 2.9 | 159 | 0.2 | 244 | 0.3 |
| <i>Parliamentary Constituency</i> | | | | | | | | | | |
| Barrow & Furness | 1,373 | 4.7 | 661 | 2.3 | 2,034 | 3.5 | 52 | 0.1 | 235 | 0.4 |
| Carlisle | 1,222 | 4.6 | 589 | 2.2 | 1,811 | 3.4 | 71 | 0.1 | 98 | 0.2 |
| Copeland | 1,163 | 4.4 | 506 | 2.0 | 1,669 | 3.2 | 67 | 0.1 | 204 | 0.4 |
| Penrith & The Border | 489 | 1.9 | 250 | 1.0 | 739 | 1.5 | 53 | 0.1 | 63 | 0.1 |
| Westmorland & Lonsdale | 364 | 1.4 | 183 | 0.7 | 547 | 1.1 | 37 | 0.1 | 49 | 0.1 |
| Workington | 1,179 | 4.9 | 517 | 2.1 | 1,696 | 3.5 | 28 | 0.1 | 208 | 0.4 |

NB: Rates are of the resident working age population

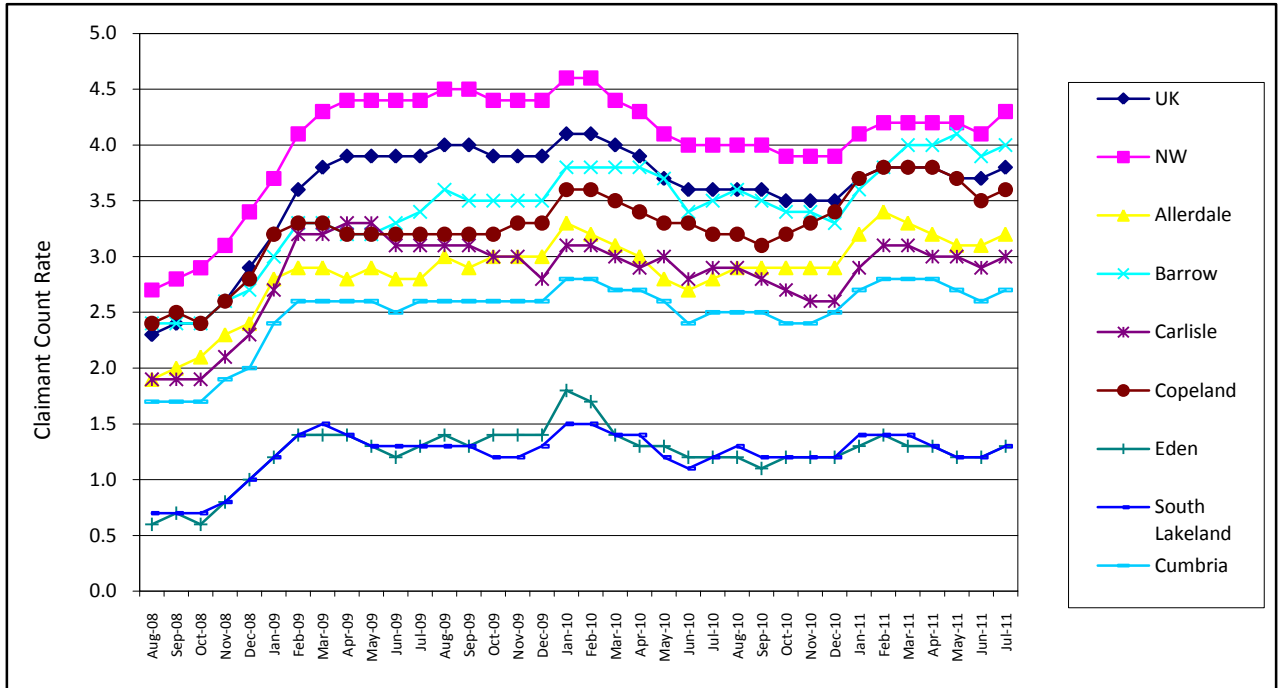
Note 1: From the May 2010 Briefing onwards, Parliamentary Constituencies are the 2010 boundaries.

Note 2: Please note that the definition of working age is now 16-65 for both males and females.

Labour Market Briefing August 2011

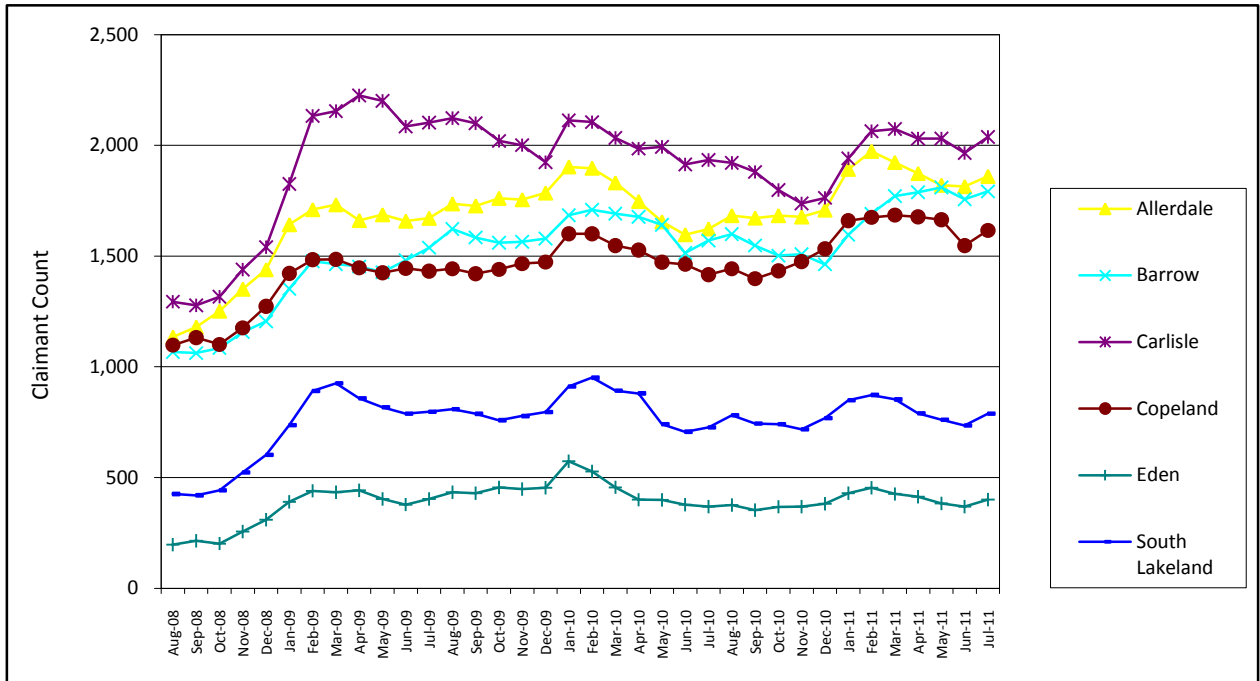
JSA CLAIMANT RATES – 3 Yr Trend

Chart 1



JSA CLAIMANT COUNTS – 3 Yr Trend

Chart 2



LONG TERM JSA CLAIMANTS – July 2011

Table 2

| | Claiming Over 6 Months | | | | Claiming Over a Year | | | |
|-------------------|------------------------|------|---------|------------|----------------------|------|---------|---------|
| | No | Rate | Change | | No | Rate | Change | |
| | | | Monthly | Annual | | | Monthly | Annual |
| Cumbria | 2,490 | 0.8 | 175 | 210 | 860 | 0.3 | 70 | -75 |
| North West | 66,325 | 1.5 | 3,010 | 840 | 27,470 | 0.6 | 1,100 | -4,110 |
| United Kingdom | 554,375 | 1.4 | 25,780 | -1,101,055 | 226,545 | 0.6 | 9,965 | -35,695 |
| Allerdale | 615 | 1.1 | 45 | 80 | 220 | 0.4 | 20 | 0 |
| Barrow-in-Furness | 515 | 1.2 | 35 | 55 | 170 | 0.4 | 20 | -15 |
| Carlisle | 545 | 0.8 | 25 | 5 | 200 | 0.3 | 25 | -30 |
| Copeland | 560 | 1.3 | 55 | 115 | 195 | 0.4 | 15 | 20 |
| Eden | 90 | 0.3 | 5 | -15 | 25 | 0.1 | 0 | -30 |
| South Lakeland | 165 | 0.3 | 10 | -35 | 55 | 0.1 | 0 | -15 |

Note: Rates are of the Working Age Population.

YOUNG JSA CLAIMANTS (aged 16-24) – July 2011

Table 3

| | Male | | Female | | All young people | | All young people | | | |
|----------------|---------|------|---------|------|------------------|------|------------------|------|---------------|------|
| | No | Rate | No | Rate | No | Rate | Monthly Change | | Annual Change | |
| | | | | | | | No | Rate | No | Rate |
| Cumbria | 1,860 | 7.1 | 845 | 3.5 | 2,705 | 5.4 | 285 | 0.6 | 330 | 0.7 |
| North West | 39,325 | 8.8 | 19,080 | 4.5 | 58,405 | 6.7 | 4,685 | 0.5 | 4,910 | 0.6 |
| United Kingdom | 302,120 | 7.9 | 155,290 | 4.3 | 457,410 | 6.1 | 38,435 | 0.5 | 45,445 | 0.6 |
| Allerdale | 410 | 8.7 | 180 | 4.2 | 595 | 6.6 | 75 | 0.8 | 85 | 0.9 |
| Barrow | 425 | 10.1 | 190 | 5.0 | 615 | 7.6 | 30 | 0.3 | 60 | 0.7 |
| Carlisle | 425 | 6.9 | 215 | 3.5 | 640 | 5.2 | 60 | 0.5 | 30 | 0.3 |
| Copeland | 390 | 10.3 | 160 | 4.8 | 550 | 7.7 | 70 | 0.9 | 105 | 1.4 |
| Eden | 85 | 3.6 | 35 | 1.5 | 120 | 2.6 | 30 | 0.6 | 35 | 0.8 |
| South Lakeland | 125 | 2.6 | 65 | 1.6 | 190 | 2.1 | 25 | 0.3 | 20 | 0.2 |

Note: Rates are of the population aged 16-24.

LONG TERM YOUNG JSA CLAIMANTS (aged 16-24) – July 2011

Table 4

| | YPs Claiming Over 6 Months | | | | YPs Claiming Over a Year | | | |
|-------------------|----------------------------|------|---------|--------|--------------------------|------|---------|--------|
| | No | Rate | Change | | No | Rate | Change | |
| | | | Monthly | Annual | | | Monthly | Annual |
| Cumbria | 345 | 0.7 | 100 | 70 | 20 | 0.0 | 5 | 0 |
| North West | 11,585 | 1.3 | 1,355 | 455 | 2,240 | 0.3 | 160 | -1,110 |
| United Kingdom | 102,975 | 1.4 | 10,320 | 12,550 | 18,795 | 0.3 | 1,965 | -8,555 |
| Allerdale | 80 | 0.9 | 20 | 10 | 5 | 0.0 | 0 | 0 |
| Barrow-in-Furness | 90 | 1.1 | 20 | 15 | 0 | 0.0 | 0 | -5 |
| Carlisle | 50 | 0.4 | 20 | 0 | 10 | 0.1 | 5 | 5 |
| Copeland | 90 | 1.3 | 30 | 40 | 5 | 0.0 | 5 | 5 |
| Eden | 10 | 0.3 | 0 | 0 | 0 | 0.0 | 0 | 0 |
| South Lakeland | 20 | 0.2 | 5 | -5 | 5 | 0.0 | 0 | 5 |

Note: Rates are of the population aged 16-24.

JSA CLAIMANT USUAL AND SOUGHT OCCUPATION – July 2011

Table 5

| OCCUPATION | Usual Occupation | | | Sought Occupation | | |
|--|------------------|--------|-------|-------------------|--------|-------|
| | Male | Female | Total | Male | Female | Total |
| Occupation unknown | 50 | 70 | 115 | 50 | 70 | 115 |
| Managers and Senior Officials | 215 | 70 | 285 | 210 | 70 | 280 |
| Professional Occupations | 150 | 80 | 230 | 155 | 80 | 235 |
| Associate Professional and Technical Occupations | 260 | 90 | 350 | 265 | 90 | 355 |
| Administrative and Secretarial Occupations | 325 | 465 | 785 | 325 | 465 | 790 |
| Skilled Trades Occupations | 925 | 20 | 945 | 920 | 20 | 940 |
| Personal Service Occupations | 140 | 350 | 485 | 145 | 360 | 505 |
| Sales and Customer Service occupations | 830 | 945 | 1,775 | 830 | 940 | 1,770 |
| Process, Plant and Machine Operatives | 830 | 85 | 910 | 835 | 80 | 910 |
| Elementary Occupations | 2,050 | 525 | 2,575 | 2,045 | 520 | 2,565 |

Note: This dataset records the usual & sought occupation given by the claimant when registering for Job Seekers' Allowance. Values are rounded to the nearest 5 and therefore may not sum.

JSA CLAIMANT FLOWS – July 2011

Table 6

| DISTRICT/TTWA | Male | | Female | | All Persons | |
|----------------------------|----------|---------|----------|---------|-------------|---------|
| | Off Flow | On Flow | Off Flow | On Flow | Off Flow | On Flow |
| Cumbria | 1,202 | 1,340 | 588 | 722 | 1,790 | 2,062 |
| Allerdale | 227 | 238 | 111 | 140 | 338 | 379 |
| Barrow in Furness | 232 | 257 | 113 | 122 | 345 | 380 |
| Carlisle | 328 | 356 | 166 | 205 | 493 | 562 |
| Copeland | 192 | 231 | 90 | 115 | 282 | 346 |
| Eden | 72 | 85 | 31 | 42 | 103 | 127 |
| South Lakeland | 152 | 172 | 77 | 97 | 229 | 270 |
| Barrow in Furness TTWA | 270 | 299 | 132 | 147 | 401 | 446 |
| Carlisle TTWA | 379 | 421 | 198 | 256 | 576 | 677 |
| Kendal TTWA | 114 | 131 | 58 | 72 | 172 | 203 |
| Penrith & Appleby TTWA | 68 | 76 | 29 | 39 | 98 | 115 |
| Whitehaven TTWA | 179 | 211 | 84 | 112 | 263 | 323 |
| Workington & Keswick TTWA | 215 | 227 | 95 | 111 | 310 | 338 |
| Lancaster & Morecambe TTWA | 416 | 475 | 186 | 261 | 602 | 736 |

Note: This dataset counts those who ended or started a claim during the previous month.

JSA CLAIMANT DESTINATIONS – July 2011

Table 7a

| Reason for Leaving the Register - Number | | | | | | | | | |
|--|------------|------------|------------|------------|------------|----------------|--------------|---------------|----------------|
| | Allerdale | Barrow | Carlisle | Copeland | Eden | South Lakeland | Cumbria | North West | United Kingdom |
| Found work | 185 | 145 | 200 | 135 | 60 | 120 | 845 | 17,155 | 126,175 |
| Increased work to 16+ hours/week | 5 | 0 | 0 | 0 | 0 | 0 | 10 | 155 | 1,885 |
| Gone abroad | 10 | 30 | 15 | 20 | 0 | 20 | 95 | 2,775 | 20,425 |
| Claimed Income Support | 5 | 0 | 10 | 5 | 0 | 5 | 25 | 500 | 4,150 |
| Claimed Incapacity Benefit | 5 | 0 | 5 | 5 | 0 | 5 | 20 | 300 | 2,065 |
| Claimed another benefit | 0 | 5 | 20 | 10 | 0 | 0 | 35 | 585 | 4,270 |
| Gone to full-time education | 0 | 0 | 0 | 0 | 0 | 0 | 5 | 1,065 | 5,890 |
| Gone onto approved training | 0 | 0 | 0 | 0 | 0 | 0 | 0 | 15 | 150 |
| Transfer to Govt-supported training | 20 | 20 | 15 | 15 | 0 | 5 | 75 | 810 | 8,320 |
| Retirement age reached | 0 | 0 | 0 | 0 | 0 | 0 | 0 | 45 | 385 |
| Automatic credits payable | 0 | 0 | 0 | 0 | 0 | 0 | 0 | 5 | 20 |
| Claimed back-to-work bonus | 0 | 0 | 0 | 0 | 0 | 0 | 0 | 0 | 0 |
| Gone to prison | 10 | 0 | 10 | 0 | 5 | 0 | 25 | 390 | 2,735 |
| Attending court | 0 | 0 | 0 | 0 | 0 | 0 | 0 | 0 | 0 |
| New claim review | 0 | 5 | 0 | 0 | 0 | 0 | 10 | 390 | 3,155 |
| Defective claim | 0 | 0 | 0 | 0 | 0 | 0 | 5 | 535 | 2,435 |
| Ceased claiming | 10 | 20 | 15 | 15 | 5 | 10 | 65 | 910 | 7,970 |
| Deceased | 0 | 0 | 0 | 0 | 0 | 0 | 0 | 10 | 105 |
| Not known | 60 | 50 | 60 | 45 | 10 | 25 | 255 | 5,680 | 39,510 |
| Failed to sign | 85 | 115 | 215 | 75 | 35 | 70 | 595 | 13,275 | 108,460 |
| Total | 390 | 400 | 570 | 325 | 120 | 265 | 2,065 | 44,605 | 338,110 |

Values are rounded to the nearest 5.

Table 7b

| Reason for Leaving the Register - Proportion | | | | | | | | | |
|--|-----------|--------|----------|----------|------|----------------|---------|------------|----------------|
| | Allerdale | Barrow | Carlisle | Copeland | Eden | South Lakeland | Cumbria | North West | United Kingdom |
| Found work | 75.6 | 63.6 | 67.0 | 66.7 | 81.9 | 70.2 | 69.4 | 66.9 | 66.4 |
| Increased work to 16+ hours/week | 1.2 | 0.0 | 0.7 | 1.0 | 0.0 | 0.6 | 0.7 | 0.6 | 1.0 |
| Gone abroad | 3.7 | 12.1 | 5.7 | 9.8 | 1.4 | 13.1 | 8.0 | 10.8 | 10.7 |
| Claimed Income Support | 1.2 | 0.0 | 3.7 | 1.5 | 1.4 | 3.0 | 1.9 | 1.9 | 2.2 |
| Claimed Incapacity Benefit | 2.8 | 0.9 | 1.0 | 1.5 | 2.8 | 1.8 | 1.6 | 1.2 | 1.1 |
| Claimed another benefit | 0.8 | 3.0 | 6.4 | 3.9 | 0.0 | 0.0 | 3.0 | 2.3 | 2.2 |
| Gone to full-time education | 0.0 | 0.0 | 0.7 | 0.0 | 2.8 | 1.2 | 0.5 | 4.2 | 3.1 |
| Gone onto approved training | 0.0 | 0.0 | 0.3 | 0.0 | 0.0 | 0.0 | 0.1 | 0.1 | 0.1 |
| Transfer to Govt-supported training | 7.7 | 9.1 | 5.4 | 7.4 | 0.0 | 3.0 | 6.2 | 3.2 | 4.4 |
| Retirement age reached | 0.0 | 0.4 | 0.0 | 0.0 | 1.4 | 0.0 | 0.2 | 0.2 | 0.2 |
| Automatic credits payable | 0.0 | 0.0 | 0.0 | 0.0 | 0.0 | 0.0 | 0.0 | 0.0 | 0.0 |
| Claimed back-to-work bonus | 0.0 | 0.0 | 0.0 | 0.0 | 0.0 | 0.0 | 0.0 | 0.0 | 0.0 |
| Gone to prison | 3.3 | 0.9 | 3.0 | 1.0 | 4.2 | 0.6 | 2.1 | 1.5 | 1.4 |
| Attending court | 0.0 | 0.0 | 0.0 | 0.0 | 0.0 | 0.0 | 0.0 | 0.0 | 0.0 |
| New claim review | 0.4 | 1.3 | 0.3 | 0.5 | 0.0 | 1.2 | 0.7 | 1.5 | 1.7 |
| Defective claim | 0.0 | 0.0 | 0.7 | 0.5 | 0.0 | 0.6 | 0.3 | 2.1 | 1.3 |
| Ceased claiming | 3.3 | 8.7 | 5.1 | 6.4 | 4.2 | 4.8 | 5.5 | 3.6 | 4.2 |
| Deceased | 0.0 | 0.0 | 0.0 | 0.0 | 0.0 | 0.0 | 0.0 | 0.0 | 0.1 |

Note: Proportions are of those who gave a reason for leaving the register (ie total does not include failed to sign or not known)

NOTIFIED VACANCIES BY INDUSTRY – July 2011

Table 8a

| Industry | Area | | | | | | | Cumbria | |
|------------------------------|-------------|-------------|-------------|-------------|------------|----------------|--------------|----------------|---------------|
| | Allerdale | Barrow | Carlisle | Copeland | Eden | South Lakeland | Cumbria | Monthly Change | Annual Change |
| Agriculture & Fishing | # | 0 | 4 | # | # | # | 9 | 1 | -15 |
| Energy & Water | # | # | 0 | 0 | 0 | # | 3 | -62 | -55 |
| Manufacturing | 9 | # | 10 | 3 | 6 | 3 | 34 | -23 | -43 |
| Construction | 6 | 18 | 24 | 3 | # | 3 | 56 | 2 | -42 |
| Retail, Hotels & Restaurants | 87 | 46 | 78 | 34 | 101 | 166 | 510 | -153 | -156 |
| Transport & Comms | 7 | 4 | 10 | # | 10 | 4 | 36 | -20 | -34 |
| Banking, Finance etc | 124 | 93 | 387 | 128 | 132 | 196 | 1,059 | 122 | -127 |
| Public Administration | 31 | 11 | 70 | 21 | 16 | 406 | 556 | 229 | 205 |
| Other Service | 9 | # | 6 | 3 | # | 25 | 45 | -34 | -50 |
| Total | 274 | 178 | 589 | 194 | 269 | 805 | 2,309 | 62 | -317 |
| <i>Total Monthly Change</i> | <i>-51</i> | <i>-7</i> | <i>-119</i> | <i>96</i> | <i>-9</i> | <i>153</i> | <i>62</i> | | |
| <i>Total Annual Change</i> | <i>-114</i> | <i>-110</i> | <i>-99</i> | <i>-106</i> | <i>9</i> | <i>103</i> | <i>-317</i> | | |

NB: Reporting months are now on a standardised 4 1/3 basis in order to smooth out variations due to differing time periods.

LIVE UNFILLED VACANCIES BY INDUSTRY – July 2011

Table 8b

| Industry | Area | | | | | | | Cumbria | |
|------------------------------|-------------|-------------|-------------|------------|------------|----------------|--------------|----------------|---------------|
| | Allerdale | Barrow | Carlisle | Copeland | Eden | South Lakeland | Cumbria | Monthly Change | Annual Change |
| Agriculture & Fishing | 1 | 0 | 0 | 1 | 2 | 0 | 4 | -1 | -20 |
| Energy & Water | 1 | 2 | 0 | 0 | 0 | 0 | 3 | -43 | -29 |
| Manufacturing | 9 | 2 | 6 | 1 | 6 | 2 | 26 | -2 | -31 |
| Construction | 6 | 17 | 18 | 2 | 0 | 2 | 45 | 8 | -51 |
| Retail, Hotels & Restaurants | 78 | 28 | 139 | 22 | 105 | 112 | 484 | -12 | -154 |
| Transport & Comms | 4 | 0 | 9 | 0 | 4 | 4 | 21 | -12 | -34 |
| Banking, Finance etc | 84 | 50 | 289 | 94 | 98 | 147 | 762 | 169 | -235 |
| Public Administration | 25 | 10 | 56 | 14 | 7 | 96 | 208 | 63 | -69 |
| Other Service | 6 | 2 | 6 | 2 | 1 | 11 | 28 | -39 | -45 |
| Total | 214 | 111 | 523 | 136 | 223 | 374 | 1,581 | 131 | -668 |
| <i>Total Monthly Change</i> | <i>-12</i> | <i>-22</i> | <i>51</i> | <i>50</i> | <i>14</i> | <i>50</i> | <i>131</i> | | |
| <i>Total Annual Change</i> | <i>-169</i> | <i>-105</i> | <i>-132</i> | <i>-62</i> | <i>-16</i> | <i>-184</i> | <i>-668</i> | | |

Note: The Jobcentre Plus vacancies dataset does not provide comprehensive measures relating to all vacancies in the economy. The proportion of vacancies which are notified by employers varies over time, according to the occupation and industry of the area and labour market conditions. Notified vacancies are those placed with Jobcentre Plus during the month. Live Unfilled vacancies are those for which a jobseeker can actively apply on the day the count is taken.

JSA CLAIMANT TO VACANCY RATIO - July 2011

Vacancy data can be used in conjunction with the claimant count to calculate a simple 'claimant to vacancy ratio'. This uses the number of live unfilled vacancies in a month, together with the number of claimants. A claimant/vacancy figure of more than 1 means that there are more claimants than live vacancies.

Table 9

| | Claimant count | Live vacancies | Claimant/vacancy ratio |
|-------------------|----------------|----------------|------------------------|
| Great Britain | 1,481,158 | 261,144 | 5.67 |
| Cumbria | 8,496 | 1,581 | 5.37 |
| Allerdale | 1,860 | 214 | 8.69 |
| Barrow in Furness | 1,792 | 111 | 16.14 |
| Carlisle | 2,038 | 523 | 3.90 |
| Copeland | 1,616 | 136 | 11.88 |
| Eden | 401 | 223 | 1.80 |
| South Lakeland | 789 | 374 | 2.11 |

Note: The Jobcentre Plus vacancies dataset does not provide comprehensive measures relating to all vacancies in the economy. The proportion of vacancies which are notified by employers varies over time, according to the occupation and industry of the area and labour market conditions. Notified vacancies are those placed with Jobcentre Plus during the month, Live Unfilled vacancies are those for which a jobseeker can actively apply on the day the count is taken.

For definitions of areas or for further information, please contact
Ginny Murphy, Research Officer, Cumbria County Council
Tel: 01228 226753 E-mail: ginny.murphy@cumbria.gov.uk

Copies of previous releases, together with other labour market and economic data, can be found on the following website: www.cumbriaobservatory.org.uk

Labour Market Briefing

August 2011

RESIDENCE-BASED JSA CLAIMANT COUNTS & RATES – Jun 2011

Locally Defined Areas

| | Locally Defined Areas | | | | | | | | | |
|-----------------------------|-----------------------|------|--------|------|-------------|------|----------------|------|---------------|------|
| | Male | | Female | | All Persons | | All Persons | | | |
| | No | Rate | No | Rate | No | Rate | Monthly Change | | Annual Change | |
| | | | | | | | No | Rate | No | Rate |
| Key Service Centres | | | | | | | | | | |
| Alston KSC | 23 | 3.3 | 11 | 1.7 | 34 | 2.5 | 9 | 0.7 | 6 | 0.4 |
| Ambleside KSC | 5 | 0.4 | 5 | 0.4 | 10 | 0.4 | -1 | 0.0 | -2 | -0.1 |
| Appleby KSC | 17 | 2.0 | # | # | 19 | 1.1 | 2 | 0.1 | -9 | -0.5 |
| Aspatria KSC | 43 | 4.0 | 30 | 2.8 | 73 | 3.4 | 23 | 1.1 | 7 | 0.3 |
| Barrow KSC | 1,078 | 5.9 | 511 | 2.8 | 1,589 | 4.3 | 39 | 0.1 | 210 | 0.6 |
| Brampton KSC | 42 | 3.2 | 25 | 1.9 | 67 | 2.5 | 0 | 0.0 | -10 | -0.4 |
| Brough KSC | 9 | 2.2 | # | # | 11 | 1.3 | 4 | 0.5 | 2 | 0.2 |
| Carlisle KSC | 1,164 | 5.1 | 558 | 2.4 | 1,722 | 3.7 | 68 | 0.1 | 111 | 0.2 |
| Cleator Moor KSC | 157 | 7.1 | 64 | 2.9 | 221 | 5.0 | 0 | 0.0 | 15 | 0.3 |
| Cockermouth KSC | 75 | 3.1 | 35 | 1.4 | 110 | 2.2 | -1 | 0.0 | 31 | 0.6 |
| Dalton in Furness KSC | 142 | 3.5 | 61 | 1.5 | 203 | 2.5 | -4 | 0.0 | 12 | 0.1 |
| Egremont KSC | 144 | 5.5 | 48 | 1.9 | 192 | 3.7 | 4 | 0.1 | 29 | 0.6 |
| Grange KSC | 8 | 0.8 | 9 | 0.9 | 17 | 0.8 | 3 | 0.1 | -6 | -0.3 |
| Grasmere KSC | # | # | 0 | 0.0 | # | # | # | -0.1 | # | -0.2 |
| Hawkshead KSC | 7 | 1.3 | # | # | 9 | 0.9 | 0 | 0.0 | 3 | 0.3 |
| Kendal KSC | 207 | 2.4 | 99 | 1.1 | 306 | 1.8 | 20 | 0.1 | 38 | 0.2 |
| Keswick KSC | 15 | 0.9 | 20 | 1.3 | 35 | 1.1 | 2 | 0.1 | 8 | 0.3 |
| Kirkby Lonsdale KSC | 6 | 0.9 | 3 | 0.4 | 9 | 0.7 | -1 | -0.1 | 4 | 0.3 |
| Kirkby Stephen KSC | 18 | 2.5 | 5 | 0.7 | 23 | 1.6 | 0 | 0.0 | 3 | 0.2 |
| Lazonby KSC | 6 | 1.4 | 3 | 0.6 | 9 | 1.0 | 1 | 0.1 | 1 | 0.1 |
| Longtown KSC | 42 | 3.0 | 19 | 1.5 | 61 | 2.3 | -6 | -0.2 | 6 | 0.2 |
| Maryport KSC | 280 | 7.6 | 106 | 2.8 | 386 | 5.2 | 0 | 0.0 | 42 | 0.6 |
| Millom KSC | 112 | 4.0 | 52 | 2.3 | 164 | 3.2 | 18 | 0.4 | 8 | 0.2 |
| Milnthorpe KSC | 9 | 1.5 | 8 | 1.3 | 17 | 1.4 | 5 | 0.4 | 4 | 0.3 |
| Penrith KSC | 118 | 2.6 | 43 | 1.0 | 161 | 1.8 | 8 | 0.1 | 9 | 0.1 |
| Sedbergh KSC | 6 | 0.5 | 5 | 0.5 | 11 | 0.5 | 3 | 0.1 | -8 | -0.4 |
| Silloth KSC | 33 | 3.7 | 11 | 1.1 | 44 | 2.4 | 0 | 0.0 | 7 | 0.4 |
| Ulverston KSC | 114 | 3.3 | 70 | 2.0 | 184 | 2.6 | 12 | 0.2 | 16 | 0.2 |
| Whitehaven KSC | 449 | 5.5 | 180 | 2.2 | 629 | 3.9 | 30 | 0.2 | 53 | 0.3 |
| Wigton KSC | 60 | 3.6 | 44 | 2.5 | 104 | 3.0 | 22 | 0.6 | 27 | 0.8 |
| Windermere KSC | 38 | 1.4 | 10 | 0.4 | 48 | 0.9 | -2 | 0.0 | 14 | 0.3 |
| Workington KSC | 558 | 7.3 | 243 | 3.2 | 801 | 5.2 | 35 | 0.2 | 143 | 0.9 |
| Housing Market Areas | | | | | | | | | | |
| Alston Moor HMA | 23 | 3.3 | 11 | 1.7 | 34 | 2.5 | 9 | 0.7 | 6 | 0.4 |
| Barrow HMA | 1,220 | 5.4 | 572 | 2.6 | 1,792 | 4.0 | 35 | 0.1 | 222 | 0.5 |
| Carlisle HMA | 1,179 | 5.0 | 563 | 2.4 | 1,742 | 3.7 | 67 | 0.1 | 110 | 0.2 |
| Central Lakes HMA | 58 | 1.0 | 19 | 0.3 | 77 | 0.6 | -8 | -0.1 | 12 | 0.1 |
| Cockermouth HMA | 75 | 3.1 | 35 | 1.4 | 110 | 2.2 | -1 | 0.0 | 31 | 0.6 |
| Eden Valley North HMA | 156 | 1.9 | 69 | 0.8 | 225 | 1.4 | 14 | 0.1 | 21 | 0.1 |
| Eden Valley South HMA | 84 | 1.6 | 32 | 0.6 | 116 | 1.1 | 9 | 0.1 | 6 | 0.1 |
| Kendal HMA | 207 | 2.4 | 99 | 1.1 | 306 | 1.8 | 20 | 0.1 | 38 | 0.2 |
| Millom HMA | 112 | 4.0 | 52 | 2.3 | 164 | 3.2 | 18 | 0.4 | 8 | 0.2 |
| North Lakes - East HMA | 19 | 1.0 | 7 | 0.4 | 26 | 0.7 | 0 | 0.0 | -1 | 0.0 |
| North Lakes - West HMA | 27 | 0.9 | 27 | 0.9 | 54 | 0.9 | -2 | 0.0 | 7 | 0.1 |
| Rural Carlisle East HMA | 141 | 1.9 | 92 | 1.2 | 233 | 1.6 | 11 | 0.1 | 6 | 0.0 |
| Rural Carlisle West HMA | 45 | 1.7 | 18 | 0.7 | 63 | 1.2 | -6 | -0.1 | -12 | -0.2 |
| Rural Kendal HMA | 66 | 1.0 | 37 | 0.5 | 103 | 0.7 | 15 | 0.1 | 2 | 0.0 |
| Sedbergh HMA | 6 | 0.5 | 5 | 0.5 | 11 | 0.5 | 3 | 0.1 | -8 | -0.4 |
| Ulverston and Furness HMA | 153 | 2.5 | 89 | 1.5 | 242 | 2.0 | 17 | 0.1 | 13 | 0.1 |
| West Lakes HMA | 36 | 1.4 | 25 | 1.1 | 61 | 1.3 | 0 | 0.0 | 0 | 0.0 |
| Whitehaven HMA | 988 | 5.6 | 403 | 2.3 | 1,391 | 4.0 | 51 | 0.1 | 192 | 0.6 |
| Wigton HMA | 82 | 2.1 | 68 | 1.7 | 150 | 1.9 | 15 | 0.2 | 27 | 0.3 |
| Workington and Maryport HMA | 1,086 | 5.5 | 460 | 2.3 | 1,546 | 3.9 | 34 | 0.1 | 172 | 0.4 |

Labour Market Briefing August 2011

| Locally Defined Areas | | | | | | | | | | |
|---|-------|------|--------|------|-------------|------|----------------|------|---------------|------|
| | Male | | Female | | All Persons | | All Persons | | | |
| | No | Rate | No | Rate | No | Rate | Monthly Change | | Annual Change | |
| | | | | | | | No | Rate | No | Rate |
| Childrens' Services Local Delivery Project Areas | | | | | | | | | | |
| Alston CS LDP | 23 | 3.3 | 11 | 1.7 | 34 | 2.5 | 9 | 0.7 | 6 | 0.4 |
| Brampton CS LDP | 156 | 1.9 | 97 | 1.2 | 253 | 1.6 | 10 | 0.1 | 5 | 0.0 |
| Cleator Moor & Egremont CS LDP | 462 | 4.9 | 179 | 2.0 | 641 | 3.5 | 11 | 0.1 | 91 | 0.5 |
| Carlisle North CS LDP | 93 | 2.5 | 49 | 1.3 | 142 | 1.9 | -4 | -0.1 | 23 | 0.3 |
| Carlisle South CS LDP | 574 | 5.9 | 273 | 2.8 | 847 | 4.3 | 50 | 0.3 | 44 | 0.2 |
| Carlisle West CS LDP | 509 | 4.9 | 240 | 2.3 | 749 | 3.6 | 23 | 0.1 | 36 | 0.2 |
| Cockermouth & Keswick CS LDP | 120 | 1.7 | 78 | 1.1 | 198 | 1.4 | -5 | 0.0 | 25 | 0.2 |
| Dalston CS LDP | 33 | 1.7 | 14 | 0.7 | 47 | 1.2 | -7 | -0.2 | -4 | -0.1 |
| Furness CS LDP | 1,373 | 4.8 | 661 | 2.3 | 2,034 | 3.6 | 52 | 0.1 | 235 | 0.4 |
| Grange CS LDP | 24 | 0.9 | 17 | 0.7 | 41 | 0.8 | 4 | 0.1 | -1 | 0.0 |
| Kendal CS LDP | 231 | 2.2 | 107 | 1.0 | 338 | 1.6 | 21 | 0.1 | 35 | 0.2 |
| Kirkby Lonsdale CS LDP | 6 | 0.9 | 3 | 0.4 | 9 | 0.7 | -1 | -0.1 | 4 | 0.3 |
| Lakes CS LDP | 14 | 0.5 | 7 | 0.3 | 21 | 0.4 | -4 | -0.1 | -3 | -0.1 |
| Maryport CS LDP | 312 | 6.7 | 117 | 2.4 | 429 | 4.5 | -9 | -0.1 | 30 | 0.3 |
| Middle Eden CS LDP | 40 | 1.3 | 22 | 0.7 | 62 | 1.0 | 5 | 0.1 | 1 | 0.0 |
| Milnthorpe CS LDP | 36 | 0.8 | 26 | 0.6 | 62 | 0.7 | 15 | 0.2 | 1 | 0.0 |
| North Allerdale CS LDP | 193 | 2.4 | 125 | 1.5 | 318 | 2.0 | 38 | 0.2 | 34 | 0.2 |
| Penrith CS LDP | 178 | 1.8 | 74 | 0.7 | 252 | 1.3 | 15 | 0.1 | 21 | 0.1 |
| Sedbergh CS LDP | 6 | 0.5 | 5 | 0.5 | 11 | 0.5 | 3 | 0.1 | -8 | -0.4 |
| South Copeland CS LDP | 123 | 3.3 | 63 | 2.0 | 186 | 2.7 | 16 | 0.2 | 15 | 0.2 |
| Upper Eden CS LDP | 41 | 1.8 | 12 | 0.5 | 53 | 1.1 | 3 | 0.1 | 4 | 0.1 |
| Whitehaven CS LDP | 551 | 5.6 | 238 | 2.4 | 789 | 4.0 | 42 | 0.2 | 94 | 0.5 |
| Windermere CS LDP | 47 | 1.4 | 18 | 0.6 | 65 | 1.0 | -1 | 0.0 | 21 | 0.3 |
| Workington CS LDP | 645 | 6.7 | 270 | 2.8 | 915 | 4.7 | 22 | 0.1 | 148 | 0.8 |
| Health Areas | | | | | | | | | | |
| Carlisle City South (Health) | 1,071 | 5.5 | 509 | 2.6 | 1,580 | 4.1 | 72 | 0.2 | 88 | 0.2 |
| Cockermouth & Keswick (Health) | 120 | 1.7 | 78 | 1.1 | 198 | 1.4 | -5 | 0.0 | 25 | 0.2 |
| Maryport (Health) | 312 | 6.7 | 117 | 2.4 | 429 | 4.5 | -9 | -0.1 | 30 | 0.3 |
| Mid Copeland (Health) | 462 | 4.9 | 179 | 2.0 | 641 | 3.5 | 11 | 0.1 | 91 | 0.5 |
| North Allerdale (Health) | 193 | 2.4 | 125 | 1.5 | 318 | 2.0 | 38 | 0.2 | 34 | 0.2 |
| South Copeland (Health) | 123 | 3.3 | 63 | 2.0 | 186 | 2.7 | 16 | 0.2 | 15 | 0.2 |
| Whitehaven (Health) | 551 | 5.6 | 238 | 2.4 | 789 | 4.0 | 42 | 0.2 | 94 | 0.5 |
| Workington (Health) | 645 | 6.7 | 270 | 2.8 | 915 | 4.7 | 22 | 0.1 | 148 | 0.8 |
| West Cumbria Partnership Areas | | | | | | | | | | |
| Cleator Moor WCP | 245 | 6.2 | 99 | 2.6 | 344 | 4.4 | 5 | 0.1 | 40 | 0.5 |
| Cockermouth WCP | 102 | 2.1 | 56 | 1.2 | 158 | 1.6 | -7 | -0.1 | 17 | 0.2 |
| Egremont WCP | 198 | 4.8 | 68 | 1.7 | 266 | 3.3 | 5 | 0.1 | 50 | 0.6 |
| Keswick WCP | 18 | 0.8 | 22 | 1.1 | 40 | 1.0 | 2 | 0.0 | 8 | 0.2 |
| Maryport WCP | 312 | 6.7 | 117 | 2.4 | 429 | 4.5 | -9 | -0.1 | 30 | 0.3 |
| Mid Copeland WCP | 19 | 1.5 | 12 | 1.0 | 31 | 1.3 | 1 | 0.0 | 1 | 0.0 |
| Millom WCP | 123 | 3.3 | 63 | 2.0 | 186 | 2.7 | 16 | 0.2 | 15 | 0.2 |
| North Allerdale WCP | 193 | 2.4 | 125 | 1.5 | 318 | 2.0 | 38 | 0.2 | 34 | 0.2 |
| Whitehaven WCP | 551 | 5.6 | 238 | 2.4 | 789 | 4.0 | 42 | 0.2 | 94 | 0.5 |
| Workington WCP | 645 | 6.7 | 270 | 2.8 | 915 | 4.7 | 22 | 0.1 | 148 | 0.8 |
| Other Areas | | | | | | | | | | |
| Lake District National Park | 181 | 1.1 | 97 | 0.6 | 278 | 0.9 | -2 | 0.0 | 24 | 0.1 |
| Keswick Market Town Initiative | 18 | 0.8 | 22 | 1.1 | 40 | 1.0 | 2 | 0.0 | 8 | 0.2 |
| Longtown Market Town Initiative | 52 | 2.5 | 24 | 1.2 | 76 | 1.9 | -3 | -0.1 | 4 | 0.1 |
| Penrith Market Town Initiative | 196 | 1.7 | 89 | 0.8 | 285 | 1.3 | 20 | 0.1 | 29 | 0.1 |
| Ulverston Market Town Initiative | 139 | 2.6 | 87 | 1.6 | 226 | 2.1 | 14 | 0.1 | 18 | 0.2 |

NB: Counts of less than 3 are denoted by a #. Wards are Census 2003 wards.

Note 1: Rates are of the Working Age Population.

Note 2: Please note that the definition of working age is now 16-65 for both males and females.

RESIDENCE-BASED JSA CLAIMANT COUNTS & RATES – Jun 2011

Wards

| WARD | Male | | Female | | All Persons | | All Persons | | | |
|------------------------|------|------|--------|------|-------------|------|----------------|------|---------------|------|
| | No | Rate | No | Rate | No | Rate | Monthly Change | | Annual Change | |
| | | | | | | | No | Rate | No | Rate |
| ALLERDALE | | | | | | | | | | |
| All Saints | 53 | 3.7 | 25 | 1.7 | 78 | 2.7 | 8 | 0.3 | 31 | 1.1 |
| Aspatria | 43 | 4.0 | 30 | 2.8 | 73 | 3.4 | 23 | 1.1 | 7 | 0.3 |
| Boltons | 5 | 0.9 | 3 | 0.5 | 8 | 0.7 | -1 | -0.1 | 3 | 0.3 |
| Broughton St Bridget's | 18 | 1.3 | 17 | 1.3 | 35 | 1.3 | -2 | -0.1 | -10 | -0.4 |
| Christchurch | 22 | 2.2 | 10 | 1.0 | 32 | 1.6 | -9 | -0.5 | 0 | 0.0 |
| Clifton | 21 | 4.3 | 8 | 1.6 | 29 | 2.9 | -15 | -1.5 | -5 | -0.5 |
| Crummock | 4 | 0.8 | # | # | 6 | 0.6 | -3 | -0.3 | -4 | -0.4 |
| Dalton | 5 | 1.0 | # | # | 7 | 0.7 | -1 | -0.1 | 0 | 0.0 |
| Derwent Valley | 3 | 0.6 | # | # | 5 | 0.5 | 0 | 0.0 | 0 | 0.0 |
| Ellen | 32 | 3.2 | 11 | 1.1 | 43 | 2.1 | -9 | -0.4 | -12 | -0.6 |
| Ellenborough | 70 | 6.1 | 23 | 2.0 | 93 | 4.0 | -15 | -0.6 | -2 | -0.1 |
| Ewanrigg | 99 | 9.9 | 36 | 3.3 | 135 | 6.5 | 6 | 0.3 | 18 | 0.9 |
| Flimby | 41 | 7.5 | 16 | 2.9 | 57 | 5.2 | 6 | 0.5 | 13 | 1.2 |
| Harrington | 34 | 3.6 | 10 | 1.1 | 44 | 2.4 | 4 | 0.2 | 12 | 0.6 |
| Holme | 11 | 2.1 | 5 | 1.0 | 16 | 1.6 | 0 | 0.0 | -12 | -1.2 |
| Keswick | 15 | 0.9 | 20 | 1.3 | 35 | 1.1 | 2 | 0.1 | 8 | 0.3 |
| Marsh | 4 | 0.8 | 7 | 1.4 | 11 | 1.1 | 1 | 0.1 | 1 | 0.1 |
| Moorclose | 121 | 8.8 | 56 | 3.6 | 177 | 6.1 | 3 | 0.1 | 23 | 0.8 |
| Moss Bay | 165 | 12.7 | 78 | 5.5 | 243 | 8.9 | 13 | 0.5 | 44 | 1.6 |
| Netherhall | 70 | 7.2 | 31 | 3.2 | 101 | 5.2 | 3 | 0.2 | 13 | 0.7 |
| Seaton | 66 | 4.3 | 19 | 1.2 | 85 | 2.7 | 2 | 0.1 | 10 | 0.3 |
| Silloth | 33 | 3.7 | 11 | 1.1 | 44 | 2.4 | 0 | 0.0 | 7 | 0.4 |
| Solway | 9 | 1.8 | 5 | 1.0 | 14 | 1.4 | 0 | 0.0 | 1 | 0.1 |
| St John's | 81 | 4.8 | 31 | 1.9 | 112 | 3.4 | -2 | -0.1 | 26 | 0.8 |
| St Michael's | 145 | 8.2 | 62 | 3.9 | 207 | 6.1 | 17 | 0.5 | 36 | 1.1 |
| Stainburn | 12 | 2.1 | 6 | 1.1 | 18 | 1.6 | 0 | 0.0 | 2 | 0.2 |
| Wampool | 7 | 1.3 | 9 | 1.8 | 16 | 1.5 | -5 | -0.5 | 2 | 0.2 |
| Warnell | 4 | 0.7 | 3 | 0.5 | 7 | 0.6 | -2 | -0.2 | -2 | -0.2 |
| Waver | 7 | 1.2 | 5 | 0.9 | 12 | 1.0 | -1 | -0.1 | -1 | -0.1 |
| Wharrels | 10 | 1.9 | 3 | 0.6 | 13 | 1.3 | 1 | 0.1 | 1 | 0.1 |
| Wigton | 60 | 3.6 | 44 | 2.5 | 104 | 3.0 | 22 | 0.6 | 27 | 0.8 |
| BARROW | | | | | | | | | | |
| Barrow Island | 114 | 12.8 | 44 | 5.5 | 158 | 9.4 | 9 | 0.5 | 19 | 1.1 |
| Central | 202 | 12.2 | 98 | 5.9 | 300 | 9.0 | 10 | 0.3 | 39 | 1.2 |
| Dalton North | 64 | 3.0 | 24 | 1.1 | 88 | 2.1 | -15 | -0.4 | -5 | -0.1 |
| Dalton South | 78 | 4.0 | 37 | 1.9 | 115 | 2.9 | 11 | 0.3 | 17 | 0.4 |
| Hawcoat | 27 | 2.0 | 11 | 0.8 | 38 | 1.4 | 3 | 0.1 | 3 | 0.1 |
| Hindpool | 151 | 8.9 | 71 | 4.1 | 222 | 6.4 | 0 | 0.0 | 34 | 1.0 |
| Newbarns | 69 | 3.7 | 31 | 1.7 | 100 | 2.7 | 6 | 0.2 | 9 | 0.2 |
| Ormsgill | 146 | 7.6 | 70 | 3.5 | 216 | 5.5 | 8 | 0.2 | 12 | 0.3 |
| Parkside | 62 | 3.5 | 36 | 2.1 | 98 | 2.8 | 4 | 0.1 | 21 | 0.6 |
| Risedale | 116 | 6.4 | 47 | 2.7 | 163 | 4.6 | 8 | 0.2 | 5 | 0.1 |
| Roosecote | 51 | 2.7 | 47 | 2.4 | 98 | 2.5 | -9 | -0.2 | 33 | 0.8 |
| Walney North | 79 | 4.9 | 29 | 1.7 | 108 | 3.3 | 0 | 0.0 | 23 | 0.7 |
| Walney South | 61 | 3.4 | 27 | 1.5 | 88 | 2.5 | 0 | 0.0 | 12 | 0.3 |

NB: Counts of less than 3 are denoted by a #. Wards are Census 2003 wards.

Note 1: Rates are of the Working Age Population.

Note 2: Please note that the definition of working age is now 16-65 for both males and females.

Labour Market Briefing

August 2011

| WARD | Male | | Female | | All Persons | | All Persons | | | |
|---------------------------|------|------|--------|------|-------------|------|----------------|------|---------------|------|
| | | | | | | | Monthly Change | | Annual Change | |
| | No | Rate | No | Rate | No | Rate | No | Rate | | |
| CARLISLE | | | | | | | | | | |
| Belah | 67 | 3.5 | 26 | 1.3 | 93 | 2.4 | -3 | -0.1 | 11 | 0.3 |
| Belle Vue | 90 | 5.0 | 54 | 2.7 | 144 | 3.8 | 4 | 0.1 | 33 | 0.9 |
| Botcherby | 138 | 7.4 | 59 | 2.8 | 197 | 5.0 | 12 | 0.3 | -3 | -0.1 |
| Brampton | 42 | 3.2 | 25 | 1.9 | 67 | 2.5 | 0 | 0.0 | -10 | -0.4 |
| Burgh | 12 | 1.7 | 4 | 0.6 | 16 | 1.2 | 1 | 0.1 | -8 | -0.6 |
| Castle | 161 | 7.1 | 59 | 3.0 | 220 | 5.2 | 8 | 0.2 | -7 | -0.2 |
| Currock | 115 | 5.6 | 53 | 2.6 | 168 | 4.1 | 4 | 0.1 | 2 | 0.0 |
| Dalston | 33 | 1.7 | 14 | 0.7 | 47 | 1.2 | -7 | -0.2 | -4 | -0.1 |
| Denton Holme | 105 | 4.9 | 58 | 2.7 | 163 | 3.8 | 14 | 0.3 | 4 | 0.1 |
| Great Corby and Geltsdale | 13 | 1.8 | 7 | 1.0 | 20 | 1.4 | -2 | -0.1 | 8 | 0.6 |
| Harraby | 77 | 4.0 | 40 | 2.1 | 117 | 3.0 | 5 | 0.1 | 8 | 0.2 |
| Hayton | 15 | 2.5 | 5 | 0.8 | 20 | 1.6 | -1 | -0.1 | -1 | -0.1 |
| Irthing | 8 | 1.3 | 4 | 0.6 | 12 | 1.0 | 0 | 0.0 | 0 | 0.0 |
| Longtown & Rockcliffe | 42 | 3.0 | 19 | 1.5 | 61 | 2.3 | -6 | -0.2 | 6 | 0.2 |
| Lyne | 10 | 1.5 | 5 | 0.8 | 15 | 1.2 | 3 | 0.2 | -2 | -0.2 |
| Morton | 100 | 6.3 | 35 | 2.1 | 135 | 4.2 | 2 | 0.1 | 9 | 0.3 |
| St Aidans | 106 | 4.9 | 68 | 3.2 | 174 | 4.0 | 10 | 0.2 | 27 | 0.6 |
| Stanwix Rural | 13 | 0.9 | 19 | 1.3 | 32 | 1.1 | 7 | 0.2 | 5 | 0.2 |
| Stanwix Urban | 26 | 1.5 | 23 | 1.3 | 49 | 1.4 | -1 | 0.0 | 12 | 0.3 |
| Upperby | 138 | 8.4 | 53 | 3.1 | 191 | 5.7 | 19 | 0.6 | 10 | 0.3 |
| Wetheral | 13 | 1.0 | 13 | 0.9 | 26 | 0.9 | 9 | 0.3 | -1 | 0.0 |
| Yewdale | 41 | 2.2 | 30 | 1.6 | 71 | 1.9 | -6 | -0.2 | 5 | 0.1 |
| COPELAND | | | | | | | | | | |
| Arlecdon | 17 | 3.1 | 7 | 1.4 | 24 | 2.3 | -3 | -0.3 | 11 | 1.1 |
| Beckermat | 43 | 4.6 | 14 | 1.6 | 57 | 3.1 | -2 | -0.1 | 16 | 0.9 |
| Bootle | 7 | 1.9 | 6 | 1.4 | 13 | 1.6 | 1 | 0.1 | 4 | 0.5 |
| Bransty | 42 | 2.4 | 25 | 1.5 | 67 | 2.0 | 5 | 0.1 | 17 | 0.5 |
| Cleator Moor North | 95 | 7.0 | 36 | 2.7 | 131 | 4.9 | 5 | 0.2 | 1 | 0.0 |
| Cleator Moor South | 62 | 7.4 | 28 | 3.2 | 90 | 5.2 | -5 | -0.3 | 14 | 0.8 |
| Distington | 89 | 7.0 | 47 | 3.6 | 136 | 5.3 | 13 | 0.5 | 35 | 1.4 |
| Egremont North | 75 | 5.5 | 27 | 1.9 | 102 | 3.7 | 5 | 0.2 | 6 | 0.2 |
| Egremont South | 69 | 5.6 | 21 | 1.9 | 90 | 3.9 | -1 | 0.0 | 23 | 1.0 |
| Ennerdale | 6 | 1.7 | # | # | 8 | 1.2 | 1 | 0.1 | -8 | -1.2 |
| Frizington | 65 | 7.7 | 26 | 3.2 | 91 | 5.5 | 7 | 0.4 | 22 | 1.3 |
| Gosforth | 3 | 0.7 | 5 | 1.3 | 8 | 1.0 | 0 | 0.0 | 4 | 0.5 |
| Harbour | 109 | 7.7 | 29 | 2.5 | 138 | 5.4 | 5 | 0.2 | 1 | 0.0 |
| Haverigg | 14 | 1.4 | 6 | 1.5 | 20 | 1.5 | 5 | 0.4 | 11 | 0.8 |
| Hensingham | 58 | 4.6 | 22 | 1.6 | 80 | 3.0 | -1 | 0.0 | -4 | -0.2 |
| Hillcrest | 22 | 2.5 | 4 | 0.5 | 26 | 1.5 | 1 | 0.1 | 11 | 0.7 |
| Holborn Hill | 36 | 4.8 | 18 | 2.2 | 54 | 3.5 | 5 | 0.3 | -1 | -0.1 |
| Kells | 30 | 4.0 | 17 | 2.2 | 47 | 3.1 | 8 | 0.5 | 13 | 0.9 |
| Millom Without | 4 | 0.8 | 5 | 1.1 | 9 | 0.9 | -3 | -0.3 | 3 | 0.3 |
| Mirehouse | 108 | 8.0 | 47 | 3.3 | 155 | 5.6 | 1 | 0.0 | 8 | 0.3 |
| Moresby | 13 | 3.3 | 11 | 2.6 | 24 | 2.9 | -1 | -0.1 | 6 | 0.7 |
| Newtown | 62 | 5.6 | 28 | 2.7 | 90 | 4.2 | 8 | 0.4 | -2 | -0.1 |
| Sandwith | 80 | 10.0 | 36 | 4.2 | 116 | 7.0 | 11 | 0.7 | 7 | 0.4 |
| Seascale | 16 | 1.9 | 7 | 0.9 | 23 | 1.4 | 1 | 0.1 | -3 | -0.2 |
| St Bees | 11 | 1.8 | 6 | 1.1 | 17 | 1.5 | 3 | 0.3 | 5 | 0.4 |

NB: Counts of less than 3 are denoted by a #. Wards are Census 2003 wards.

Note 1: Rates are of the Working Age Population.

Note 2: Please note that the definition of working age is now 16-65 for both males and females.

Labour Market Briefing

August 2011

| WARD | Male | | Female | | All Persons | | All Persons | | | |
|--------------------|------|------|--------|------|-------------|------|----------------|------|---------------|------|
| | | | | | | | Monthly Change | | Annual Change | |
| | No | Rate | No | Rate | No | Rate | No | Rate | | |
| EDEN | | | | | | | | | | |
| Alston Moor | 23 | 3.3 | 11 | 1.7 | 34 | 2.5 | 9 | 0.7 | 6 | 0.4 |
| Appleby (Appleby) | 6 | 1.8 | # | # | 7 | 1.0 | -1 | -0.1 | -9 | -1.3 |
| Appleby (Bongate) | 11 | 2.1 | # | # | 12 | 1.1 | 3 | 0.3 | 0 | 0.0 |
| Askham | 6 | 1.4 | 3 | 0.6 | 9 | 1.0 | 3 | 0.3 | 1 | 0.1 |
| Brough | 9 | 2.2 | # | # | 11 | 1.3 | 4 | 0.5 | 2 | 0.2 |
| Crosby Ravensworth | 4 | 0.9 | 0 | 0.0 | 4 | 0.4 | -2 | -0.2 | -1 | -0.1 |
| Dacre | 4 | 1.0 | # | # | 6 | 0.7 | -1 | -0.1 | 0 | 0.0 |
| Eamont | 9 | 2.3 | 4 | 1.0 | 13 | 1.6 | 3 | 0.4 | 8 | 1.0 |
| Greystoke | # | # | 0 | 0.0 | # | # | # | -0.1 | # | 0.0 |
| Hartside | 6 | 1.7 | 6 | 1.6 | 12 | 1.7 | 2 | 0.3 | 7 | 1.0 |
| Hesket | 8 | 0.9 | 6 | 0.6 | 14 | 0.7 | 1 | 0.1 | -5 | -0.3 |
| Kirkby Stephen | 18 | 2.5 | 5 | 0.7 | 23 | 1.6 | 0 | 0.0 | 3 | 0.2 |
| Kirkby Thore | 10 | 2.0 | 9 | 1.8 | 19 | 1.9 | 2 | 0.2 | 4 | 0.4 |
| Kirkoswald | 6 | 1.2 | 3 | 0.7 | 9 | 1.0 | 4 | 0.4 | 4 | 0.4 |
| Langwathby | 4 | 0.8 | 4 | 0.8 | 8 | 0.8 | 0 | 0.0 | # | 0.6 |
| Lazonby | 6 | 1.4 | 3 | 0.6 | 9 | 1.0 | 1 | 0.1 | 1 | 0.1 |
| Long Marton | # | # | 5 | 1.3 | 6 | 0.8 | 0 | 0.0 | 3 | 0.4 |
| Morland | # | # | 0 | 0.0 | # | # | # | 0.1 | # | -0.4 |
| Orton with Tebay | 7 | 1.5 | 3 | 0.6 | 10 | 1.1 | 1 | 0.1 | 1 | 0.1 |
| Penrith Carleton | 10 | 2.2 | 3 | 0.6 | 13 | 1.4 | 3 | 0.3 | 2 | 0.2 |
| Penrith East | 23 | 2.9 | 7 | 0.9 | 30 | 1.9 | 1 | 0.1 | 8 | 0.5 |
| Penrith North | 24 | 1.9 | 12 | 1.0 | 36 | 1.5 | 1 | 0.0 | -10 | -0.4 |
| Penrith Pategill | 9 | 2.7 | 5 | 1.2 | 14 | 1.9 | 3 | 0.4 | -3 | -0.4 |
| Penrith South | 25 | 3.6 | 5 | 0.7 | 30 | 2.2 | 3 | 0.2 | 13 | 1.0 |
| Penrith West | 27 | 2.5 | 11 | 1.1 | 38 | 1.8 | -3 | -0.1 | -1 | 0.0 |
| Ravenstonedale | 3 | 1.0 | 0 | 0.0 | 3 | 0.5 | -2 | -0.3 | -1 | -0.2 |
| Shap | 7 | 1.5 | # | # | 9 | 1.0 | -3 | -0.3 | -5 | -0.5 |
| Skelton | 4 | 0.8 | # | # | 6 | 0.6 | -1 | -0.1 | -1 | -0.1 |
| Ullswater | 4 | 0.9 | # | # | 6 | 0.6 | 1 | 0.1 | 3 | 0.3 |
| Warcop | 4 | 0.9 | # | # | 6 | 0.7 | 0 | 0.0 | -1 | -0.1 |

NB: Counts of less than 3 are denoted by a #. Wards are Census 2003 wards.

Note 1: Rates are of the Working Age Population.

Note 2: Please note that the definition of working age is now 16-65 for both males and females.

Labour Market Briefing

August 2011

| WARD | Male | | Female | | All Persons | | All Persons | | | |
|--------------------------|------|------|--------|------|-------------|------|----------------|------|---------------|------|
| | No | Rate | No | Rate | No | Rate | Monthly Change | | Annual Change | |
| | | | | | | | No | Rate | No | Rate |
| SOUTH LAKELAND | | | | | | | | | | |
| Arnside & Beetham | 10 | 0.9 | # | # | 12 | 0.6 | 4 | 0.2 | -1 | 0.0 |
| Broughton | 14 | 2.0 | # | # | 16 | 1.2 | 3 | 0.2 | -5 | -0.4 |
| Burneside | 9 | 1.5 | 4 | 0.7 | 13 | 1.1 | 0 | 0.0 | 0 | 0.0 |
| Burton & Holme | 4 | 0.4 | # | # | 6 | 0.3 | -1 | -0.1 | 0 | 0.0 |
| Cartmel | # | # | 4 | 0.8 | 6 | 0.6 | 1 | 0.1 | -3 | -0.3 |
| Coniston | # | # | 0 | 0.0 | # | # | # | -0.2 | # | -0.2 |
| Crake Valley | 6 | 1.0 | 6 | 1.1 | 12 | 1.0 | 1 | 0.1 | 1 | 0.1 |
| Crooklands | # | # | 6 | 0.8 | 8 | 0.6 | 2 | 0.1 | -5 | -0.3 |
| Grange | 8 | 0.8 | 9 | 0.9 | 17 | 0.8 | 3 | 0.1 | -6 | -0.3 |
| Hawkshead | 7 | 1.3 | # | # | 9 | 0.9 | 0 | 0.0 | 3 | 0.3 |
| Holker | 8 | 1.5 | # | # | 10 | 1.0 | 2 | 0.2 | 7 | 0.7 |
| Kendal Castle | 9 | 2.0 | 5 | 1.0 | 14 | 1.5 | 3 | 0.3 | 2 | 0.2 |
| Kendal Far Cross | 18 | 2.6 | # | # | 20 | 1.4 | 1 | 0.1 | 0 | 0.0 |
| Kendal Fell | 23 | 3.8 | 9 | 1.6 | 32 | 2.7 | 4 | 0.3 | 0 | 0.0 |
| Kendal Glebelands | 5 | 0.9 | 7 | 1.2 | 12 | 1.1 | 3 | 0.3 | -3 | -0.3 |
| Kendal Heron Hill | 12 | 2.0 | 4 | 0.7 | 16 | 1.3 | 7 | 0.6 | 4 | 0.3 |
| Kendal Highgate | 22 | 4.0 | 10 | 2.0 | 32 | 3.1 | -1 | -0.1 | -3 | -0.3 |
| Kendal Kirkland | 18 | 3.0 | 11 | 1.7 | 29 | 2.3 | -3 | -0.2 | 1 | 0.1 |
| Kendal Mintsfeet | 22 | 3.3 | 10 | 1.5 | 32 | 2.4 | 3 | 0.2 | 5 | 0.4 |
| Kendal Nether | 3 | 0.6 | 5 | 1.0 | 8 | 0.8 | 0 | 0.0 | -4 | -0.4 |
| Kendal Oxenholme | 18 | 2.3 | 5 | 0.6 | 23 | 1.5 | -3 | -0.2 | -2 | -0.1 |
| Kendal Parks | 9 | 1.2 | 6 | 0.8 | 15 | 1.0 | 3 | 0.2 | 9 | 0.6 |
| Kendal Stonecross | 11 | 2.2 | 8 | 1.5 | 19 | 1.8 | -2 | -0.2 | 9 | 0.9 |
| Kendal Strickland | 8 | 1.2 | 5 | 0.7 | 13 | 1.0 | -1 | -0.1 | 2 | 0.1 |
| Kendal Underley | 29 | 4.4 | 12 | 1.8 | 41 | 3.0 | 6 | 0.4 | 18 | 1.3 |
| Kirkby Lonsdale | 6 | 0.9 | 3 | 0.4 | 9 | 0.7 | -1 | -0.1 | 4 | 0.3 |
| Lakes Ambleside | 5 | 0.4 | 5 | 0.4 | 10 | 0.4 | -1 | 0.0 | -2 | -0.1 |
| Lakes Grasmere | # | # | 0 | 0.0 | # | # | # | -0.1 | # | -0.2 |
| Levens | # | # | 3 | 0.6 | 5 | 0.5 | 1 | 0.1 | -1 | -0.1 |
| Low Furness & Swarthmoor | 19 | 1.6 | 11 | 0.8 | 30 | 1.2 | 1 | 0.0 | 1 | 0.0 |
| Lyth Valley | 9 | 1.4 | 5 | 0.7 | 14 | 1.1 | 4 | 0.3 | 4 | 0.3 |
| Milnthorpe | 9 | 1.5 | 8 | 1.3 | 17 | 1.4 | 5 | 0.4 | 4 | 0.3 |
| Natland | 7 | 1.3 | # | # | 8 | 0.7 | 2 | 0.2 | 2 | 0.2 |
| Sedbergh | 6 | 0.5 | 5 | 0.5 | 11 | 0.5 | 3 | 0.1 | -8 | -0.4 |
| Staveley-in-Cartmel | 6 | 1.1 | # | # | 8 | 0.8 | -2 | -0.2 | 1 | 0.1 |
| Staveley-in-Westmorland | 9 | 1.5 | 8 | 1.3 | 17 | 1.4 | 1 | 0.1 | 7 | 0.6 |
| Ulverston Central | 18 | 3.1 | 18 | 3.3 | 36 | 3.2 | 1 | 0.1 | 7 | 0.6 |
| Ulverston East | 31 | 4.5 | 17 | 2.4 | 48 | 3.4 | -1 | -0.1 | 1 | 0.1 |
| Ulverston North | 16 | 2.6 | 10 | 1.6 | 26 | 2.1 | -1 | -0.1 | 5 | 0.4 |
| Ulverston South | 11 | 2.1 | 11 | 2.0 | 22 | 2.1 | 5 | 0.5 | 0 | 0.0 |
| Ulverston Town | 27 | 4.7 | 13 | 2.4 | 40 | 3.6 | 7 | 0.6 | 4 | 0.4 |
| Ulverston West | 11 | 2.1 | # | # | 12 | 1.2 | 1 | 0.1 | -1 | -0.1 |
| Whinfell | 8 | 1.1 | 3 | 0.4 | 11 | 0.7 | -1 | -0.1 | -5 | -0.3 |
| Windermere Applethwaite | 9 | 1.2 | # | # | 10 | 0.7 | -4 | -0.3 | 0 | 0.0 |
| Windermere Bowness North | 8 | 1.4 | 3 | 0.5 | 11 | 0.9 | 2 | 0.2 | 1 | 0.1 |
| Windermere Bowness South | 6 | 0.9 | 4 | 0.6 | 10 | 0.7 | 0 | 0.0 | 4 | 0.3 |
| Windermere Town | 15 | 2.0 | # | # | 17 | 1.2 | 0 | 0.0 | 9 | 0.6 |

NB: Counts of less than 3 are denoted by a #. Wards are Census 2003 wards.

Note 1: Rates are of the Working Age Population.

Note 2: Please note that the definition of working age is now 16-65 for both males and females.