

The June 2011 unemployment and vacancy figures were released by the Office for National Statistics on 13th July 2011. The JSA Claimant Count was taken on 9th June 2011 and the vacancy count was for the month to 3rd June 2011.

The JSA Claimant Count & Rate (not seasonally adjusted)

The JSA claimant *count* in Cumbria fell by 281 between May and Jun 2011 to 8,188. Almost a third of claimants (29.7%, 2,420 people) were under 25 years and a tenth (9.7%, 790 people) had been claiming for over a year. The claimant count fell in all districts, especially in Copeland where it fell by 117. This non-seasonally adjusted figure also fell both regionally and nationally (see "other measures of joblessness" for the seasonally adjusted national figure). Between the same two months last year, the count in Cumbria fell by 329 people. The JSA claimant *rate* in Cumbria in Jun 2011 was down 0.1 at 2.6%. The rate was unchanged regionally and nationally but remains higher than locally at 4.1% and 3.7% respectively.

Compared to a year ago, the JSA claimant count in Cumbria is 616 higher, a rise of 8.1% over the year. It is also higher nationally than a year ago but only by 3.4%. The claimant *rate* in Cumbria is up by 0.2 compared to a year ago, the national rate is up by 0.1 compared to a year ago.

There were 2,420 young people aged 16-24 claiming JSA in Cumbria in Jun 2011, a fall of 145 from last month. This represents 4.8% of all people in this age group which is slightly lower than the national average of 5.6%. However, rates in Barrow (7.3%) and Copeland (6.8%) were higher than nationally.

Other Measures of Joblessness

These figures are often quoted by the national press but are not available for local areas. They are provided here for information but should not directly be compared with those above as the methodology used to compile them is different.

The jobless total for the UK (claimants and non claimants looking for work) fell by 26,000 over the quarter ending May 2011 to 2.45 million. The jobless rate fell by 0.1 over the quarter to 7.7%. Similar figures using the wider definition of joblessness are not available at local level.

The seasonally adjusted claimant count for the UK was 1,520,100 in Jun 2011, up by 24,500 over the previous month, the biggest monthly rise for 2 years. Comparable seasonally adjusted figures are not available at local level.

Notified Vacancies

The number of new vacancies notified to JobCentre Plus in Cumbria in the month to 3rd June 2011 was 2,247 a rise of 403 compared to the number notified in May but 338 fewer than were notified in the same month last year.

Note: We have now changed to using a standardised 4 1/3 week period for notified vacancies which removes the issue of comparability between 4 and 5 week periods.

JSA Claimant to Vacancy Ratio

The ratio of claimants to *live unfilled* vacancies in Cumbria was 5.65 in Jun 2011 (GB 5.58). The ratio was especially high in Copeland (17.99) and Barrow (13.21).

RESIDENCE-BASED CLAIMANT COUNTS & RATES – June 2011

Table 1

National, County, Districts, Travel to Work Areas & Parliamentary Constituencies										
	Male		Female		All Persons		All Persons			
	No	Rate	No	Rate	No	Rate	Monthly Change		Annual Change	
	No	Rate	No	Rate	No	Rate	No	Rate	No	Rate
Cumbria	5,630	3.6	2,558	1.7	8,188	2.6	-281	-0.1	616	0.2
North West	127,813	5.7	57,003	2.6	184,816	4.1	-1,112	0.0	7,541	0.2
United Kingdom	1,007,544	5.0	485,533	2.4	1,493,077	3.7	-11,836	0.0	48,981	0.1
Great Britain	965,204	5.0	469,169	2.4	1,434,373	3.7	-11,896	0.0	45,612	0.1
<i>District</i>										
Allerdale	1,264	4.3	550	1.9	1,814	3.1	-6	0.0	217	0.4
Barrow in Furness	1,191	5.3	566	2.5	1,757	3.9	-53	-0.1	243	0.5
Carlisle	1,331	4.0	635	1.9	1,966	2.9	-65	-0.1	52	0.1
Copeland	1,095	4.8	452	2.1	1,547	3.5	-117	-0.3	84	0.2
Eden	260	1.6	109	0.7	369	1.1	-14	0.0	-8	0.0
South Lakeland	489	1.6	246	0.8	735	1.2	-26	0.0	28	0.0
<i>Travel to Work Area</i>										
Barrow in Furness	1,334	4.6	648	2.2	1,982	3.4	-65	-0.1	240	0.4
Carlisle	1,565	3.7	751	1.8	2,316	2.7	-73	-0.1	75	0.1
Kendal	346	1.3	164	0.6	510	1.0	-14	0.0	31	0.1
Penrith & Appleby	239	1.6	96	0.6	335	1.1	-12	0.0	1	0.0
Whitehaven	1,042	4.7	421	2.0	1,463	3.3	-114	-0.3	66	0.2
Workington & Keswick	1,193	4.8	510	2.0	1,703	3.4	-6	0.0	213	0.4
Lancaster & Morecambe	1,773	3.7	792	1.7	2,565	2.7	-1	0.0	159	0.2
<i>Parliamentary Constituency</i>										
Barrow & Furness	1,334	4.6	648	2.2	1,982	3.4	-65	-0.1	240	0.4
Carlisle	1,186	4.5	554	2.1	1,740	3.3	-68	-0.1	46	0.1
Copeland	1,123	4.3	479	1.9	1,602	3.1	-118	-0.2	83	0.2
Penrith & The Border	465	1.8	221	0.9	686	1.4	-4	0.0	10	0.0
Westmorland & Lonsdale	346	1.3	164	0.6	510	1.0	-14	0.0	31	0.1
Workington	1,176	4.9	492	2.0	1,668	3.4	-12	0.0	206	0.4

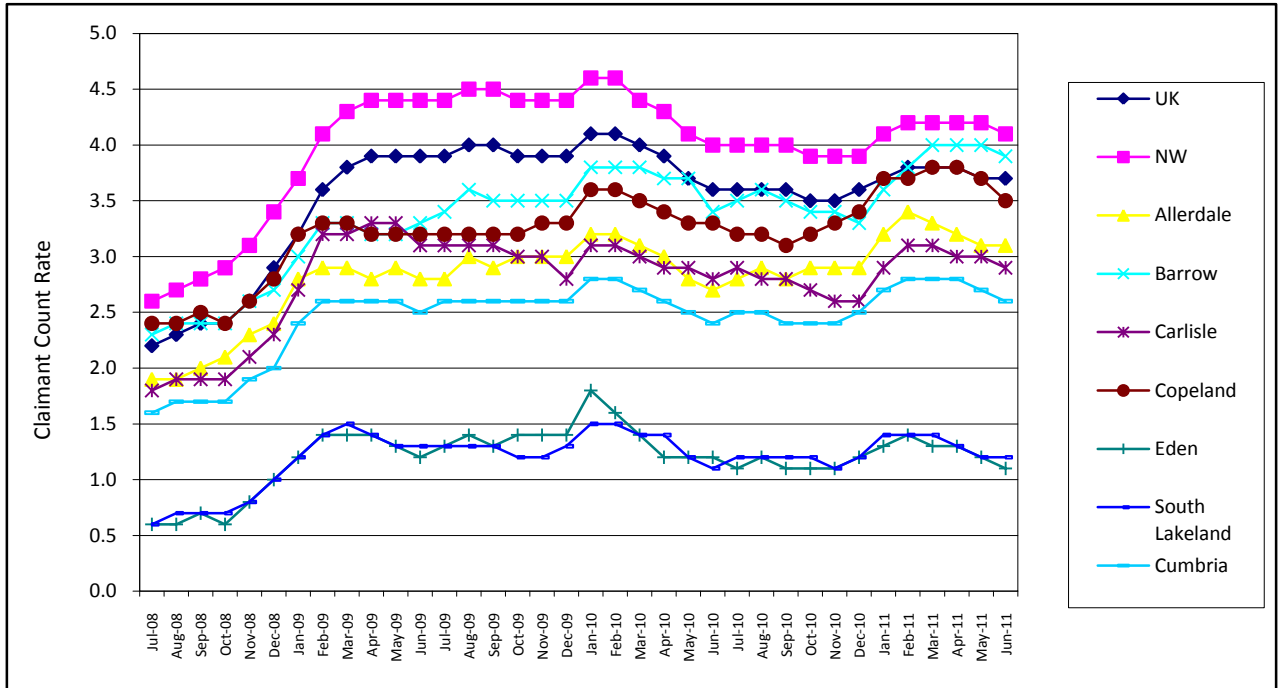
NB: Rates are of the resident working age population

Note 1: From the May 2010 Briefing onwards, Parliamentary Constituencies are the 2010 boundaries.

Note 2: Please note that the definition of working age is now 16-65 for both males and females.

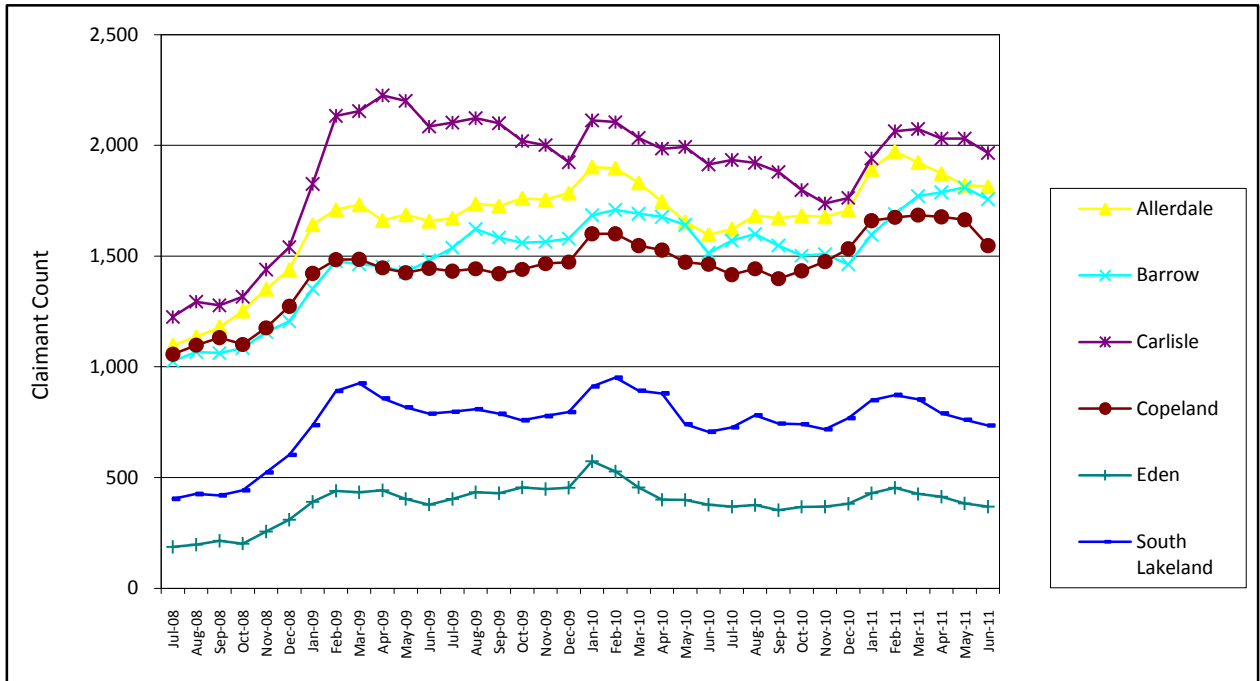
JSA CLAIMANT RATES – 3 Yr Trend

Chart 1



JSA CLAIMANT COUNTS – 3 Yr Trend

Chart 2



LONG TERM JSA CLAIMANTS – June 2011

Table 2

	Claiming Over 6 Months				Claiming Over a Year			
	No	rate	Change		No	rate	Change	
			Monthly	Annual			Monthly	Annual
Cumbria	2,315	0.7	-105	-90	790	0.3	-45	-145
North West	63,315	1.4	355	-6,310	26,370	0.6	-170	-5,690
United Kingdom	528,595	1.3	8,580	-48,230	216,580	0.5	-745	-47,680
Allerdale	570	1.0	-40	5	200	0.3	-5	-20
Barrow-in-Furness	480	1.1	-5	-5	150	0.3	0	-35
Carlisle	520	0.8	-25	-35	175	0.3	-25	-40
Copeland	505	1.1	0	35	180	0.4	0	0
Eden	85	0.3	-5	-30	25	0.1	0	-20
South Lakeland	155	0.3	-5	-45	55	0.1	0	-10

Note: Rates are of the Working Age Population.

YOUNG JSA CLAIMANTS (aged 16-24) – June 2011

Table 3

	Male		Female		All young people		All young people			
	No	rate	No	rate	No	rate	Monthly Change		Annual Change	
							No	rate	No	rate
Cumbria	1,680	6.4	740	3.1	2,420	4.8	-145	-0.3	160	0.3
North West	36,895	8.3	16,825	3.9	53,720	6.2	-735	0.0	1,110	0.2
United Kingdom	282,275	7.4	136,700	3.8	418,975	5.6	-3,910	-0.1	17,375	0.2
Allerdale	370	7.9	150	3.4	520	5.8	-10	-0.1	45	0.6
Barrow	400	9.6	185	4.7	585	7.3	-15	-0.2	70	0.9
Carlisle	395	6.4	190	3.1	580	4.7	-25	-0.2	10	0.1
Copeland	340	9.0	140	4.2	480	6.8	-75	-1.0	35	0.6
Eden	70	2.9	25	1.1	90	2.0	5	0.1	5	0.1
South Lakeland	105	2.2	60	1.4	165	1.8	-20	-0.3	-5	-0.1

Note: Rates are of the population aged 16-24.

LONG TERM YOUNG JSA CLAIMANTS (aged 16-24) – June 2011

Table 4

	YPs Claiming Over 6 Months				YPs Claiming Over a Year			
	No	%	Change		No	%	Change	
			Monthly	Annual			Monthly	Annual
Cumbria	245	0.5	-65	330	15	0.0	0	0
North West	10,230	1.2	-375	12,965	2,080	0.2	20	-1,435
United Kingdom	92,655	1.2	930	103,775	16,830	0.2	140	-11,180
Allerdale	60	0.6	-20	80	5	0.0	5	0
Barrow-in-Furness	70	0.9	-10	85	0	0.0	-5	-5
Carlisle	30	0.2	-15	70	5	0.0	0	0
Copeland	60	0.8	-20	60	0	0.0	0	0
Eden	10	0.2	5	10	0	0.0	0	0
South Lakeland	15	0.2	-10	25	5	0.0	0	5

Note: Rates are of the population aged 16-24.

JSA CLAIMANT USUAL AND SOUGHT OCCUPATION – June 2011

Table 5

OCCUPATION	Usual Occupation			Sought Occupation		
	Male	Female	Total	Male	Female	Total
Occupation unknown	45	60	105	45	60	105
Managers and Senior Officials	205	80	285	205	80	280
Professional Occupations	135	65	200	140	65	205
Associate Professional and Technical Occupations	230	90	320	240	85	325
Administrative and Secretarial Occupations	290	455	745	295	460	750
Skilled Trades Occupations	935	20	955	930	20	950
Personal Service Occupations	125	320	445	125	325	450
Sales and Customer Service occupations	765	880	1,640	760	880	1,640
Process, Plant and Machine Operatives	875	70	945	875	70	945
Elementary Occupations	2,000	510	2,510	1,995	505	2,500

Note: This dataset records the usual & sought occupation given by the claimant when registering for Job Seekers' Allowance. Values are rounded to the nearest 5 and therefore may not sum.

JSA CLAIMANT FLOWS – June 2011

Table 6

DISTRICT/TTWA	Male		Female		All Persons	
	Off Flow	On Flow	Off Flow	On Flow	Off Flow	On Flow
Cumbria	1,492	1,278	675	615	2,167	1,894
Allerdale	302	242	92	151	394	392
Barrow in Furness	280	250	139	105	418	355
Carlisle	412	363	182	168	594	531
Copeland	275	209	120	72	395	281
Eden	65	67	47	30	112	98
South Lakeland	158	147	95	90	253	237
Barrow in Furness TTWA	325	295	167	129	492	424
Carlisle TTWA	494	417	209	208	703	625
Kendal TTWA	113	103	67	66	180	169
Penrith & Appleby TTWA	61	64	42	26	103	90
Whitehaven TTWA	259	197	117	66	376	263
Workington & Keswick TTWA	270	220	79	128	349	348
Lancaster & Morecambe TTWA	446	440	206	206	652	646

Note: This dataset counts those who ended or started a claim during the previous month.

JSA CLAIMANT DESTINATIONS – June 2011

Table 7a

Reason for Leaving the Register - Number									
	Allerdale	Barrow	Carlisle	Copeland	Eden	South Lakeland	Cumbria	North West	United Kingdom
Found work	130	145	170	130	50	105	730	13,560	104,055
Increased work to 16+ hours/week	0	0	0	0	0	0	5	140	1,460
Gone abroad	15	15	20	10	5	10	75	1,800	12,240
Claimed Income Support	0	5	0	0	0	0	10	400	3,310
Claimed Incapacity Benefit	5	5	0	5	0	0	15	245	1,740
Claimed another benefit	5	5	10	5	0	5	30	420	3,135
Gone to full-time education	0	0	5	0	0	0	5	215	2,025
Gone onto approved training	0	0	0	0	0	0	0	10	100
Transfer to Govt-supported training	70	80	100	85	5	20	355	3,700	24,110
Retirement age reached	0	0	0	0	0	0	0	25	170
Automatic credits payable	0	0	0	0	0	0	0	0	10
Claimed back-to-work bonus	0	0	0	0	0	0	0	0	0
Gone to prison	5	5	10	5	0	0	30	285	2,090
Attending court	0	0	0	0	0	0	0	0	0
New claim review	0	5	0	0	0	0	5	320	2,665
Defective claim	0	0	0	0	0	0	0	430	1,775
Ceased claiming	5	10	15	10	5	10	60	720	6,225
Deceased	0	0	0	0	0	0	0	15	80
Not known	35	30	55	35	10	20	185	4,440	31,225
Failed to sign	90	85	165	80	25	55	495	10,945	88,125
Total	365	385	550	365	105	235	2,000	37,665	284,545

Values are rounded to the nearest 5.

Table 7b

Reason for Leaving the Register - Proportion									
	Allerdale	Barrow	Carlisle	Copeland	Eden	South Lakeland	Cumbria	North West	United Kingdom
Found work	54.8	52.7	50.8	50.8	75.4	67.5	55.2	60.9	63.0
Increased work to 16+ hours/week	0.8	0.0	0.3	0.0	0.0	0.6	0.3	0.6	0.9
Gone abroad	6.3	4.8	6.3	4.0	5.8	7.6	5.7	8.1	7.4
Claimed Income Support	0.8	1.1	0.6	0.8	1.4	1.3	0.9	1.8	2.0
Claimed Incapacity Benefit	2.5	1.1	0.0	2.0	0.0	0.0	1.1	1.1	1.1
Claimed another benefit	2.5	2.6	2.7	1.6	1.4	1.9	2.3	1.9	1.9
Gone to full-time education	0.0	0.0	1.2	0.0	1.4	0.0	0.4	1.0	1.2
Gone onto approved training	0.0	0.0	0.0	0.0	0.0	0.0	0.0	0.0	0.1
Transfer to Govt-supported training	28.5	29.7	29.9	34.1	4.3	12.1	26.9	16.6	14.6
Retirement age reached	0.0	0.0	0.0	0.0	0.0	0.0	0.0	0.1	0.1
Automatic credits payable	0.0	0.0	0.0	0.0	0.0	0.0	0.0	0.0	0.0
Claimed back-to-work bonus	0.0	0.0	0.0	0.0	0.0	0.0	0.0	0.0	0.0
Gone to prison	1.7	2.6	3.6	2.0	1.4	1.3	2.3	1.3	1.3
Attending court	0.0	0.0	0.0	0.0	0.0	0.0	0.0	0.0	0.0
New claim review	0.8	1.1	0.3	0.0	0.0	0.0	0.5	1.4	1.6
Defective claim	0.0	0.0	0.0	0.4	0.0	0.0	0.1	1.9	1.1
Ceased claiming	1.3	4.4	4.2	4.4	8.7	7.6	4.4	3.2	3.8
Deceased	0.0	0.0	0.0	0.0	0.0	0.0	0.0	0.1	0.0

Note: Proportions are of those who gave a reason for leaving the register (ie total does not include failed to sign or not known)

NOTIFIED VACANCIES BY INDUSTRY – June 2011

Table 8a

Industry	Area							Cumbria	
	Allerdale	Barrow	Carlisle	Copeland	Eden	South Lakeland	Cumbria	Monthly Change	Annual Change
Agriculture & Fishing	#	0	0	0	#	4	8	-2	-4
Energy & Water	20	17	11	0	11	7	65	64	58
Manufacturing	18	3	8	#	#	24	57	16	-12
Construction	0	#	34	0	16	3	54	36	8
Retail, Hotels & Restaurants	87	43	233	24	75	202	663	69	-247
Transport & Comms	17	#	20	5	10	#	56	14	-9
Banking, Finance etc	133	109	302	50	139	204	937	100	-206
Public Administration	39	9	60	9	24	187	327	90	57
Other Service	10	0	42	8	0	20	79	16	15
Total	325	185	708	98	278	652	2,247	403	-338
<i>Total Monthly Change</i>	<i>62</i>	<i>16</i>	<i>225</i>	<i>-42</i>	<i>78</i>	<i>64</i>	<i>403</i>		
<i>Total Annual Change</i>	<i>-73</i>	<i>-97</i>	<i>45</i>	<i>-80</i>	<i>-68</i>	<i>-67</i>	<i>-338</i>		

NB: Reporting months are now on a standardised 4 1/3 basis in order to smooth out variations due to differing time periods.

LIVE UNFILLED VACANCIES BY INDUSTRY – June 2011

Table 8b

Industry	Area							Cumbria	
	Allerdale	Barrow	Carlisle	Copeland	Eden	South Lakeland	Cumbria	Monthly Change	Annual Change
Agriculture & Fishing	1	0	0	0	2	2	5	-9	-2
Energy & Water	16	14	8	0	8	0	46	45	43
Manufacturing	11	0	3	1	1	12	28	-4	-8
Construction	0	0	23	0	14	0	37	20	12
Retail, Hotels & Restaurants	70	27	197	23	50	129	496	-1	-272
Transport & Comms	7	1	12	1	10	2	33	-1	-46
Banking, Finance etc	81	78	153	48	105	128	593	113	-463
Public Administration	31	13	37	7	19	38	145	-21	-120
Other Service	9	0	39	6	0	13	67	37	20
Total	226	133	472	86	209	324	1,450	179	-836
<i>Total Monthly Change</i>	<i>5</i>	<i>5</i>	<i>181</i>	<i>-5</i>	<i>69</i>	<i>-76</i>	<i>179</i>		
<i>Total Annual Change</i>	<i>-116</i>	<i>-259</i>	<i>-17</i>	<i>-102</i>	<i>-46</i>	<i>-296</i>	<i>-836</i>		

Note: The Jobcentre Plus vacancies dataset does not provide comprehensive measures relating to all vacancies in the economy. The proportion of vacancies which are notified by employers varies over time, according to the occupation and industry of the area and labour market conditions. Notified vacancies are those placed with Jobcentre Plus during the month, Live Unfilled vacancies are those for which a jobseeker can actively apply on the day the count is taken.

JSA CLAIMANT TO VACANCY RATIO - June 2011

Vacancy data can be used in conjunction with the claimant count to calculate a simple 'claimant to vacancy ratio'. This uses the number of live unfilled vacancies in a month, together with the number of claimants. A claimant/vacancy figure of more than 1 means that there are more claimants than live vacancies.

Table 9

	Claimant count	Live vacancies	Claimant/vacancy ratio
Great Britain	1,434,373	256,853	5.58
Cumbria	8,188	1,450	5.65
Allerdale	1,814	226	8.03
Barrow in Furness	1,757	133	13.21
Carlisle	1,966	472	4.17
Copeland	1,547	86	17.99
Eden	369	209	1.77
South Lakeland	735	324	2.27

Note: The Jobcentre Plus vacancies dataset does not provide comprehensive measures relating to all vacancies in the economy. The proportion of vacancies which are notified by employers varies over time, according to the occupation and industry of the area and labour market conditions. Notified vacancies are those placed with Jobcentre Plus during the month, Live Unfilled vacancies are those for which a jobseeker can actively apply on the day the count is taken.

For definitions of areas or for further information, please contact
Ginny Murphy, Research Officer, Cumbria County Council
Tel: 01228 226753 E-mail: ginny.murphy@cumbria.gov.uk

Copies of previous releases, together with other labour market and economic data, can be found on the following website: www.cumbriaobservatory.org.uk

Labour Market Briefing

July 2011

RESIDENCE-BASED JSA CLAIMANT COUNTS & RATES – Jun 2011

Locally Defined Areas

	Locally Defined Areas									
	Male		Female		All Persons		All Persons			
	No	Rate	No	Rate	No	Rate	Monthly Change		Annual Change	
							No	Rate	No	Rate
Key Service Centres										
Alston KSC	15	2.2	10	1.5	25	1.9	1	0.1	-6	-0.4
Ambleside KSC	6	0.5	5	0.4	11	0.5	-1	0.0	3	0.1
Appleby KSC	16	1.9	#	#	17	1.0	-2	-0.1	-9	-0.5
Aspatria KSC	32	3.0	18	1.7	50	2.3	-14	-0.7	-12	-0.6
Barrow KSC	1,050	5.7	500	2.7	1,550	4.2	-48	-0.1	214	0.6
Brampton KSC	46	3.5	21	1.6	67	2.5	12	0.5	-15	-0.6
Brough KSC	7	1.7	0	0.0	7	0.8	1	0.1	-4	-0.5
Carlisle KSC	1,133	4.9	521	2.2	1,654	3.6	-71	-0.2	59	0.1
Cleator Moor KSC	157	7.1	64	2.9	221	5.0	-28	-0.6	19	0.4
Cockermouth KSC	79	3.3	32	1.3	111	2.3	4	0.1	33	0.7
Dalton in Furness KSC	141	3.4	66	1.6	207	2.5	-5	-0.1	29	0.4
Egremont KSC	135	5.2	53	2.1	188	3.7	-28	-0.5	11	0.2
Grange KSC	9	0.9	5	0.5	14	0.7	-4	-0.2	-7	-0.3
Grasmere KSC	#	#	0	0.0	#	#	#	-0.1	#	-0.4
Hawkshead KSC	7	1.3	#	#	9	0.9	2	0.2	6	0.6
Kendal KSC	197	2.3	89	1.0	286	1.7	-15	-0.1	16	0.1
Keswick KSC	13	0.8	20	1.3	33	1.0	2	0.1	-1	0.0
Kirkby Lonsdale KSC	6	0.9	4	0.6	10	0.7	3	0.2	4	0.3
Kirkby Stephen KSC	17	2.3	6	0.8	23	1.6	-5	-0.3	4	0.3
Lazonby KSC	6	1.4	#	#	8	0.9	1	0.1	0	0.0
Longtown KSC	44	3.1	23	1.8	67	2.5	-1	0.0	16	0.6
Maryport KSC	282	7.7	104	2.7	386	5.2	-12	-0.2	49	0.7
Millom KSC	103	3.6	43	1.9	146	2.9	-12	-0.2	-10	-0.2
Milnthorpe KSC	7	1.2	5	0.8	12	1.0	-2	-0.2	2	0.2
Penrith KSC	113	2.4	40	0.9	153	1.7	-5	-0.1	-2	0.0
Sedbergh KSC	4	0.3	4	0.4	8	0.4	-7	-0.3	-9	-0.4
Silloth KSC	33	3.7	11	1.1	44	2.4	-4	-0.2	7	0.4
Ulverston KSC	106	3.0	66	1.9	172	2.5	-8	-0.1	9	0.1
Whitehaven KSC	437	5.3	162	2.0	599	3.7	-28	-0.2	2	0.0
Wigton KSC	55	3.3	27	1.5	82	2.4	5	0.1	7	0.2
Windermere KSC	38	1.4	12	0.5	50	0.9	2	0.0	17	0.3
Workington KSC	537	7.0	229	3.0	766	5.0	10	0.1	103	0.7
Housing Market Areas										
Alston Moor HMA	15	2.2	10	1.5	25	1.9	1	0.1	-6	-0.4
Barrow HMA	1,191	5.3	566	2.5	1,757	3.9	-53	-0.1	243	0.5
Carlisle HMA	1,148	4.9	527	2.2	1,675	3.5	-68	-0.1	56	0.1
Central Lakes HMA	61	1.0	24	0.4	85	0.7	-1	0.0	25	0.2
Cockermouth HMA	79	3.3	32	1.3	111	2.3	4	0.1	33	0.7
Eden Valley North HMA	149	1.8	62	0.8	211	1.3	-7	0.0	-3	0.0
Eden Valley South HMA	76	1.4	31	0.6	107	1.0	-3	0.0	2	0.0
Kendal HMA	197	2.3	89	1.0	286	1.7	-15	-0.1	16	0.1
Millom HMA	103	3.6	43	1.9	146	2.9	-12	-0.2	-10	-0.2
North Lakes - East HMA	20	1.1	6	0.3	26	0.7	-5	-0.1	-1	0.0
North Lakes - West HMA	27	0.9	29	0.9	56	0.9	3	0.0	3	0.0
Rural Carlisle East HMA	137	1.8	85	1.1	222	1.5	1	0.0	4	0.0
Rural Carlisle West HMA	46	1.8	23	0.9	69	1.3	2	0.0	-8	-0.2
Rural Kendal HMA	55	0.8	33	0.5	88	0.6	8	0.1	0	0.0
Sedbergh HMA	4	0.3	4	0.4	8	0.4	-7	-0.3	-9	-0.4
Ulverston and Furness HMA	143	2.4	82	1.4	225	1.9	-12	-0.1	-3	0.0
West Lakes HMA	38	1.5	23	1.0	61	1.3	-5	-0.1	0	0.0
Whitehaven HMA	954	5.4	386	2.2	1,340	3.9	-100	-0.3	94	0.3
Wigton HMA	83	2.1	52	1.3	135	1.7	6	0.1	25	0.3
Workington and Maryport HMA	1,075	5.4	437	2.2	1,512	3.8	-19	0.0	156	0.4

Labour Market Briefing July 2011

Locally Defined Areas										
	Male		Female		All Persons		All Persons			
	No	Rate	No	Rate	No	Rate	Monthly Change		Annual Change	
							No	Rate	No	Rate
Childrens' Services Local Delivery Project Areas										
Alston CS LDP	15	2.2	10	1.5	25	1.9	1	0.1	-6	-0.4
Brampton CS LDP	152	1.9	91	1.1	243	1.5	4	0.0	1	0.0
Cleator Moor & Egremont CS LDP	448	4.8	182	2.0	630	3.4	-68	-0.4	65	0.4
Carlisle North CS LDP	98	2.7	48	1.3	146	2.0	5	0.1	38	0.5
Carlisle South CS LDP	546	5.7	251	2.5	797	4.1	-45	-0.2	0	0.0
Carlisle West CS LDP	498	4.8	228	2.2	726	3.5	-33	-0.2	13	0.1
Cockermouth & Keswick CS LDP	127	1.8	76	1.1	203	1.5	2	0.0	26	0.2
Dalston CS LDP	37	1.9	17	0.9	54	1.4	4	0.1	0	0.0
Furness CS LDP	1,334	4.7	648	2.3	1,982	3.5	-65	-0.1	240	0.4
Grange CS LDP	26	1.0	11	0.4	37	0.7	-6	-0.1	-3	-0.1
Kendal CS LDP	219	2.1	98	0.9	317	1.5	-14	-0.1	14	0.1
Kirkby Lonsdale CS LDP	6	0.9	4	0.6	10	0.7	3	0.2	4	0.3
Lakes CS LDP	16	0.6	9	0.3	25	0.5	0	0.0	5	0.1
Maryport CS LDP	323	6.9	115	2.4	438	4.6	-7	-0.1	51	0.5
Middle Eden CS LDP	35	1.2	22	0.7	57	0.9	1	0.0	3	0.0
Milnthorpe CS LDP	27	0.6	20	0.4	47	0.5	4	0.0	-2	0.0
North Allerdale CS LDP	178	2.2	102	1.3	280	1.7	-12	-0.1	16	0.1
Penrith CS LDP	173	1.7	64	0.6	237	1.2	-15	-0.1	-5	0.0
Sedbergh CS LDP	4	0.3	4	0.4	8	0.4	-7	-0.3	-9	-0.4
South Copeland CS LDP	116	3.1	54	1.7	170	2.5	-14	-0.2	-1	0.0
Upper Eden CS LDP	37	1.6	13	0.6	50	1.1	-1	0.0	0	0.0
Whitehaven CS LDP	531	5.4	216	2.2	747	3.8	-35	-0.2	20	0.1
Windermere CS LDP	48	1.4	18	0.6	66	1.0	6	0.1	22	0.3
Workington CS LDP	636	6.6	257	2.6	893	4.6	11	0.1	124	0.6
Health Areas										
Carlisle City South (Health)	1,035	5.4	473	2.4	1,508	3.9	-76	-0.2	21	0.1
Cockermouth & Keswick (Health)	127	1.8	76	1.1	203	1.5	2	0.0	26	0.2
Maryport (Health)	323	6.9	115	2.4	438	4.6	-7	-0.1	51	0.5
Mid Copeland (Health)	448	4.8	182	2.0	630	3.4	-68	-0.4	65	0.4
North Allerdale (Health)	178	2.2	102	1.3	280	1.7	-12	-0.1	16	0.1
South Copeland (Health)	116	3.1	54	1.7	170	2.5	-14	-0.2	-1	0.0
Whitehaven (Health)	531	5.4	216	2.2	747	3.8	-35	-0.2	20	0.1
Workington (Health)	636	6.6	257	2.6	893	4.6	11	0.1	124	0.6
West Cumbria Partnership Areas										
Cleator Moor WCP	239	6.1	100	2.6	339	4.4	-33	-0.4	34	0.4
Cockermouth WCP	111	2.3	54	1.1	165	1.7	-2	0.0	30	0.3
Egremont WCP	189	4.6	72	1.8	261	3.2	-33	-0.4	30	0.4
Keswick WCP	16	0.7	22	1.1	38	0.9	4	0.1	-4	-0.1
Maryport WCP	323	6.9	115	2.4	438	4.6	-7	-0.1	51	0.5
Mid Copeland WCP	20	1.6	10	0.8	30	1.2	-2	-0.1	1	0.0
Millom WCP	116	3.1	54	1.7	170	2.5	-14	-0.2	-1	0.0
North Allerdale WCP	178	2.2	102	1.3	280	1.7	-12	-0.1	16	0.1
Whitehaven WCP	531	5.4	216	2.2	747	3.8	-35	-0.2	20	0.1
Workington WCP	636	6.6	257	2.6	893	4.6	11	0.1	124	0.6
Other Areas										
Lake District National Park	180	1.1	100	0.6	280	0.9	2	0.0	28	0.1
Keswick Market Town Initiative	16	0.7	22	1.1	38	0.9	4	0.1	-4	-0.1
Longtown Market Town Initiative	51	2.5	28	1.5	79	2.0	-2	-0.1	11	0.3
Penrith Market Town Initiative	186	1.6	79	0.7	265	1.2	-12	-0.1	-1	0.0
Ulverston Market Town Initiative	131	2.5	81	1.5	212	2.0	-14	-0.1	4	0.0

NB: Counts of less than 3 are denoted by a #. Wards are Census 2003 wards.

Note 1: Rates are of the Working Age Population.

Note 2: Please note that the definition of working age is now 16-65 for both males and females.

RESIDENCE-BASED JSA CLAIMANT COUNTS & RATES – Jun 2011

Wards

WARD	Male		Female		All Persons		All Persons			
	No	Rate	No	Rate	No	Rate	Monthly Change		Annual Change	
							No	Rate	No	Rate
ALLERDALE										
All Saints	50	3.5	20	1.3	70	2.4	4	0.1	21	0.7
Aspatria	32	3.0	18	1.7	50	2.3	-14	-0.7	-12	-0.6
Boltons	4	0.7	5	0.9	9	0.8	3	0.3	6	0.5
Broughton St Bridget's	20	1.5	17	1.3	37	1.4	-1	0.0	-6	-0.2
Christchurch	29	2.9	12	1.2	41	2.1	0	0.0	12	0.6
Clifton	32	6.5	12	2.4	44	4.4	0	0.0	6	0.6
Crummock	7	1.5	#	#	9	0.9	-4	-0.4	1	0.1
Dalton	5	1.0	3	0.6	8	0.8	-1	-0.1	2	0.2
Derwent Valley	3	0.6	#	#	5	0.5	2	0.2	-3	-0.3
Ellen	41	4.1	11	1.1	52	2.6	5	0.2	2	0.1
Ellenborough	78	6.8	30	2.6	108	4.7	0	0.0	15	0.6
Ewanrigg	96	9.6	33	3.0	129	6.2	-6	-0.3	12	0.6
Flimby	36	6.6	15	2.7	51	4.7	-3	-0.3	11	1.0
Harrington	31	3.3	9	1.0	40	2.2	2	0.1	12	0.6
Holme	8	1.5	8	1.6	16	1.6	-5	-0.5	-10	-1.0
Keswick	13	0.8	20	1.3	33	1.0	2	0.1	-1	0.0
Marsh	5	1.0	5	1.0	10	1.0	-1	-0.1	0	0.0
Moorclose	119	8.7	55	3.6	174	6.0	-3	-0.1	18	0.6
Moss Bay	161	12.4	69	4.9	230	8.5	1	0.0	31	1.1
Netherhall	72	7.4	26	2.7	98	5.0	-3	-0.2	11	0.6
Seaton	67	4.3	16	1.0	83	2.6	1	0.0	15	0.5
Silloth	33	3.7	11	1.1	44	2.4	-4	-0.2	7	0.4
Solway	8	1.6	6	1.2	14	1.4	1	0.1	-1	-0.1
St John's	84	4.9	30	1.9	114	3.5	-7	-0.2	28	0.8
St Michael's	129	7.3	61	3.8	190	5.6	16	0.5	10	0.3
Stainburn	13	2.3	5	0.9	18	1.6	1	0.1	4	0.4
Wampool	10	1.9	11	2.1	21	2.0	3	0.3	10	1.0
Warnell	5	0.8	4	0.7	9	0.8	2	0.2	5	0.4
Waver	8	1.3	5	0.9	13	1.1	-3	-0.3	3	0.3
Wharrels	10	1.9	#	#	12	1.2	1	0.1	1	0.1
Wigton	55	3.3	27	1.5	82	2.4	5	0.1	7	0.2
BARROW										
Barrow Island	105	11.8	44	5.5	149	8.8	-2	-0.1	4	0.2
Central	201	12.1	89	5.4	290	8.7	-9	-0.3	23	0.7
Dalton North	74	3.4	29	1.4	103	2.4	1	0.0	16	0.4
Dalton South	67	3.5	37	1.9	104	2.6	-6	-0.2	13	0.3
Hawcoat	21	1.5	14	1.0	35	1.3	2	0.1	-1	0.0
Hindpool	150	8.8	72	4.1	222	6.4	10	0.3	36	1.0
Newbarns	62	3.3	32	1.7	94	2.5	-12	-0.3	10	0.3
Ormsgill	136	7.1	72	3.6	208	5.3	-11	-0.3	20	0.5
Parkside	61	3.4	33	1.9	94	2.7	-6	-0.2	22	0.6
Risedale	116	6.4	39	2.3	155	4.4	-11	-0.3	0	0.0
Roosecote	59	3.1	48	2.4	107	2.7	3	0.1	42	1.1
Walney North	78	4.9	30	1.8	108	3.3	4	0.1	33	1.0
Walney South	61	3.4	27	1.5	88	2.5	-16	-0.5	25	0.7

NB: Counts of less than 3 are denoted by a #. Wards are Census 2003 wards.

Note 1: Rates are of the Working Age Population.

Note 2: Please note that the definition of working age is now 16-65 for both males and females.

Labour Market Briefing July 2011

WARD	Male		Female		All Persons		All Persons			
	No	Rate	No	Rate	No	Rate	Monthly Change		Annual Change	
							No	Rate	No	Rate
CARLISLE										
Belah	68	3.6	28	1.5	96	2.5	4	0.1	19	0.5
Belle Vue	92	5.1	48	2.4	140	3.7	-11	-0.3	30	0.8
Botcherby	127	6.8	58	2.8	185	4.7	-2	-0.1	-7	-0.2
Brampton	46	3.5	21	1.6	67	2.5	12	0.5	-15	-0.6
Burgh	9	1.3	6	0.9	15	1.1	-2	-0.1	-8	-0.6
Castle	158	7.0	54	2.7	212	5.0	-2	0.0	-15	-0.4
Currock	117	5.7	47	2.3	164	4.0	-25	-0.6	15	0.4
Dalston	37	1.9	17	0.9	54	1.4	4	0.1	0	0.0
Denton Holme	97	4.6	52	2.4	149	3.5	-10	-0.2	-2	0.0
Great Corby and Geltsdale	14	2.0	8	1.1	22	1.6	2	0.1	9	0.6
Harraby	71	3.7	41	2.1	112	2.9	1	0.0	3	0.1
Hayton	15	2.5	6	1.0	21	1.7	3	0.2	-3	-0.2
Irthing	8	1.3	4	0.6	12	1.0	-8	-0.6	2	0.2
Longtown & Rockcliffe	44	3.1	23	1.8	67	2.5	-1	0.0	16	0.6
Lyne	7	1.1	5	0.8	12	0.9	-1	-0.1	-5	-0.4
Morton	100	6.3	33	2.0	133	4.1	-7	-0.2	-1	0.0
St Aidans	105	4.8	59	2.8	164	3.8	-8	-0.2	9	0.2
Stanwix Rural	11	0.8	14	1.0	25	0.9	-4	-0.1	2	0.1
Stanwix Urban	30	1.7	20	1.1	50	1.4	1	0.0	19	0.5
Upperby	126	7.7	46	2.7	172	5.1	-11	-0.3	-20	-0.6
Wetheral	7	0.5	10	0.7	17	0.6	1	0.0	-5	-0.2
Yewdale	42	2.2	35	1.9	77	2.1	-1	0.0	9	0.2
COPELAND										
Arlecdon	17	3.1	10	2.0	27	2.6	4	0.4	10	1.0
Beckermet	44	4.7	15	1.7	59	3.2	-8	-0.4	17	0.9
Bootle	9	2.4	3	0.7	12	1.5	0	0.0	2	0.3
Bransty	38	2.2	24	1.4	62	1.8	0	0.0	12	0.4
Cleator Moor North	95	7.0	31	2.3	126	4.7	-21	-0.8	4	0.1
Cleator Moor South	62	7.4	33	3.7	95	5.5	-7	-0.4	15	0.9
Distington	79	6.2	44	3.4	123	4.8	-7	-0.3	16	0.6
Egremont North	66	4.8	31	2.2	97	3.5	-18	-0.6	-2	-0.1
Egremont South	69	5.6	22	2.0	91	3.9	-10	-0.4	13	0.6
Ennerdale	5	1.4	#	#	7	1.0	-1	-0.1	-10	-1.5
Frizington	60	7.1	24	2.9	84	5.1	-8	-0.5	15	0.9
Gosforth	5	1.2	3	0.8	8	1.0	-1	-0.1	4	0.5
Harbour	107	7.6	26	2.3	133	5.2	1	0.0	-16	-0.6
Haverigg	12	1.2	3	0.8	15	1.1	-2	-0.1	7	0.5
Hensingham	59	4.6	22	1.6	81	3.1	-11	-0.4	1	0.0
Hillcrest	20	2.3	5	0.6	25	1.5	-2	-0.1	7	0.4
Holborn Hill	32	4.2	17	2.1	49	3.1	-2	-0.1	-6	-0.4
Kells	28	3.7	11	1.4	39	2.6	-7	-0.5	5	0.3
Millom Without	4	0.8	8	1.8	12	1.3	-2	-0.2	7	0.7
Mirehouse	115	8.6	39	2.8	154	5.6	-12	-0.4	-7	-0.3
Moresby	15	3.8	10	2.3	25	3.0	0	0.0	2	0.2
Newtown	59	5.4	23	2.2	82	3.8	-8	-0.4	-11	-0.5
Sandwith	70	8.7	35	4.1	105	6.3	3	0.2	0	0.0
Seascale	15	1.8	7	0.9	22	1.4	-1	-0.1	-3	-0.2
St Bees	10	1.7	4	0.7	14	1.2	3	0.3	2	0.2

NB: Counts of less than 3 are denoted by a #. Wards are Census 2003 wards.

Note 1: Rates are of the Working Age Population.

Note 2: Please note that the definition of working age is now 16-65 for both males and females.

Labour Market Briefing July 2011

WARD	Male		Female		All Persons		All Persons			
							Monthly Change		Annual Change	
	No	Rate	No	Rate	No	Rate	No	Rate		
EDEN										
Alston Moor	15	2.2	10	1.5	25	1.9	1	0.1	-6	-0.4
Appleby (Appleby)	7	2.1	#	#	8	1.2	-3	-0.4	-5	-0.7
Appleby (Bongate)	9	1.7	0	0.0	9	0.8	1	0.1	-4	-0.4
Askham	4	0.9	#	#	6	0.7	-1	-0.1	-1	-0.1
Brough	7	1.7	0	0.0	7	0.8	1	0.1	-4	-0.5
Crosby Ravensworth	5	1.1	#	#	6	0.6	2	0.2	3	0.3
Dacre	4	1.0	3	0.7	7	0.8	1	0.1	3	0.3
Eamont	8	2.0	#	#	10	1.2	-2	-0.2	5	0.6
Greystoke	3	0.7	0	0.0	3	0.3	-1	-0.1	#	0.1
Hartside	4	1.1	6	1.6	10	1.4	1	0.1	6	0.8
Hesket	9	1.0	4	0.4	13	0.7	-4	-0.2	-11	-0.6
Kirkby Stephen	17	2.3	6	0.8	23	1.6	-5	-0.3	4	0.3
Kirkby Thore	8	1.6	9	1.8	17	1.7	4	0.4	4	0.4
Kirkoswald	4	0.8	#	#	5	0.5	-1	-0.1	0	0.0
Langwathby	4	0.8	4	0.8	8	0.8	1	0.1	1	0.1
Lazonby	6	1.4	#	#	8	0.9	1	0.1	0	0.0
Long Marton	#	#	5	1.3	6	0.8	-2	-0.3	#	0.6
Morland	#	#	0	0.0	#	#	#	-0.2	#	-0.7
Orton with Tebay	5	1.1	4	0.8	9	1.0	-1	-0.1	-1	-0.1
Penrith Carleton	7	1.6	3	0.6	10	1.1	3	0.3	-2	-0.2
Penrith East	23	2.9	6	0.8	29	1.8	-4	-0.3	8	0.5
Penrith North	24	1.9	11	0.9	35	1.4	-1	0.0	-10	-0.4
Penrith Pategill	7	2.1	4	1.0	11	1.5	-4	-0.5	-8	-1.1
Penrith South	21	3.1	6	0.9	27	2.0	3	0.2	13	1.0
Penrith West	31	2.8	10	1.0	41	2.0	-2	-0.1	-3	-0.1
Ravenstonedale	3	1.0	#	#	5	0.9	0	0.0	0	0.0
Shap	11	2.3	#	#	12	1.3	0	0.0	-3	-0.3
Skelton	5	1.0	#	#	7	0.7	-1	-0.1	0	0.0
Ullswater	#	#	3	0.6	5	0.5	-3	-0.3	2	0.2
Warcop	5	1.2	#	#	6	0.7	#	0.5	1	0.1

NB: Counts of less than 3 are denoted by a #. Wards are Census 2003 wards.

Note 1: Rates are of the Working Age Population.

Note 2: Please note that the definition of working age is now 16-65 for both males and females.

Labour Market Briefing

July 2011

WARD	Male		Female		All Persons		All Persons			
	No	Rate	No	Rate	No	Rate	Monthly Change		Annual Change	
							No	Rate	No	Rate
SOUTH LAKELAND										
Arnside & Beetham	7	0.7	#	#	8	0.4	2	0.1	-1	0.0
Broughton	12	1.7	#	#	13	1.0	2	0.1	-7	-0.5
Burneside	7	1.2	6	1.0	13	1.1	0	0.0	3	0.3
Burton & Holme	5	0.6	#	#	7	0.4	0	0.0	-1	-0.1
Cartmel	#	#	3	0.6	5	0.5	1	0.1	-2	-0.2
Coniston	#	#	#	#	3	0.3	0	0.0	0	0.0
Crake Valley	6	1.0	5	0.9	11	0.9	0	0.0	-3	-0.3
Crooklands	#	#	5	0.7	6	0.4	2	0.1	-2	-0.1
Grange	9	0.9	5	0.5	14	0.7	-4	-0.2	-7	-0.3
Hawkshead	7	1.3	#	#	9	0.9	2	0.2	6	0.6
Holker	8	1.5	0	0.0	8	0.8	0	0.0	3	0.3
Kendal Castle	8	1.8	3	0.6	11	1.2	-1	-0.1	1	0.1
Kendal Far Cross	13	1.9	6	0.8	19	1.3	0	0.0	-2	-0.1
Kendal Fell	19	3.1	9	1.6	28	2.4	-9	-0.8	-2	-0.2
Kendal Glebelands	4	0.7	5	0.9	9	0.8	2	0.2	-1	-0.1
Kendal Heron Hill	9	1.5	0	0.0	9	0.8	-4	-0.3	-1	-0.1
Kendal Highgate	23	4.2	10	2.0	33	3.2	0	0.0	-4	-0.4
Kendal Kirkland	22	3.6	10	1.6	32	2.6	-2	-0.2	-1	-0.1
Kendal Mintsfeet	22	3.3	7	1.1	29	2.2	0	0.0	-1	-0.1
Kendal Nether	4	0.8	4	0.8	8	0.8	-1	-0.1	-6	-0.6
Kendal Oxenholme	21	2.7	5	0.6	26	1.7	-2	-0.1	1	0.1
Kendal Parks	5	0.7	7	1.0	12	0.8	2	0.1	6	0.4
Kendal Stonecross	15	3.0	6	1.1	21	2.0	3	0.3	13	1.3
Kendal Strickland	7	1.0	7	1.0	14	1.0	-3	-0.2	4	0.3
Kendal Underley	25	3.8	10	1.5	35	2.6	0	0.0	9	0.7
Kirkby Lonsdale	6	0.9	4	0.6	10	0.7	3	0.2	4	0.3
Lakes Ambleside	6	0.5	5	0.4	11	0.5	-1	0.0	3	0.1
Lakes Grasmere	#	#	0	0.0	#	#	#	-0.1	#	-0.4
Levens	#	#	#	#	4	0.4	-2	-0.2	0	0.0
Low Furness & Swarthmoor	19	1.6	10	0.8	29	1.2	-6	-0.2	-2	-0.1
Lyth Valley	5	0.8	5	0.7	10	0.8	4	0.3	0	0.0
Milnthorpe	7	1.2	5	0.8	12	1.0	-2	-0.2	2	0.2
Natland	6	1.1	0	0.0	6	0.5	1	0.1	-1	-0.1
Sedbergh	4	0.3	4	0.4	8	0.4	-7	-0.3	-9	-0.4
Staveley-in-Cartmel	7	1.3	3	0.6	10	1.0	-3	-0.3	3	0.3
Staveley-in-Westmorland	10	1.6	6	1.0	16	1.3	4	0.3	5	0.4
Ulverston Central	18	3.1	17	3.1	35	3.1	-2	-0.2	1	0.1
Ulverston East	30	4.3	19	2.7	49	3.5	-1	-0.1	4	0.3
Ulverston North	15	2.4	12	2.0	27	2.2	-5	-0.4	4	0.3
Ulverston South	10	1.9	7	1.3	17	1.6	-4	-0.4	0	0.0
Ulverston Town	23	4.0	10	1.9	33	3.0	3	0.3	-1	-0.1
Ulverston West	10	1.9	#	#	11	1.1	1	0.1	1	0.1
Whinfell	9	1.2	3	0.4	12	0.8	0	0.0	-4	-0.3
Windermere Applethwaite	12	1.7	#	#	14	1.0	-4	-0.3	5	0.4
Windermere Bowness North	7	1.2	#	#	9	0.8	4	0.3	-1	-0.1
Windermere Bowness South	6	0.9	4	0.6	10	0.7	0	0.0	2	0.1
Windermere Town	13	1.8	4	0.5	17	1.2	2	0.1	11	0.8

NB: Counts of less than 3 are denoted by a #. Wards are Census 2003 wards.

Note 1: Rates are of the Working Age Population.

Note 2: Please note that the definition of working age is now 16-65 for both males and females.