

The April 2011 unemployment and vacancy figures were released by the Office for National Statistics on 18th May 2011. The JSA Claimant Count was taken on 14th April 2011 and the vacancy count was for the month to 8th April 2011.

The JSA Claimant Count & Rate (not seasonally adjusted)

The JSA claimant *count* in Cumbria fell by 159 between Mar and Apr 2011 to 8,573. The claimant count fell in all districts except Barrow where it rose by 17. It rose regionally and fell nationally. Between the same two months last year, the count in Cumbria fell by 236 people. The JSA claimant *rate* in Cumbria in April 2011 fell by 0.1 to 2.8%. The rate was unchanged regionally and nationally but remains higher than locally at 4.2% and 3.8% respectively.

Compared to a year ago, the JSA claimant count in Cumbria is 357 higher, a rise of 4.3% over the year whereas nationally it is lower (UK annual decrease 5.4%). The claimant *rate* in Cumbria is up by 0.1 compared to a year ago, the national rate is down 0.1 compared to last year.

There were 2,670 young people aged 16-24 claiming JSA in Cumbria in April 2011. This represents 5.3% of all people in this age group which is slightly lower than the national average of 5.8%. However, rates in Allerdale (6.1%), Barrow (7.8%) and Copeland (7.8%) were all higher than nationally.

Other Measures of Joblessness

These figures are often quoted by the national press but are not available for local areas. They are provided here for information but should not directly be compared with those above as the methodology used to compile them is different.

The jobless total for the UK (claimants and non claimants looking for work) fell by 36,000 over the quarter ending Mar 2011 to 2.46 million. The jobless rate fell by 0.1 to 7.7%. The national rate of joblessness among young people (aged 16-24) was 20%. Similar figures using the wider definition of joblessness are not available at local level.

The seasonally adjusted claimant count for the UK was 1,468,600 in April 2011, up by 12,400 over the previous month. Comparable seasonally adjusted figures are not available at local level.

Notified Vacancies

The number of new vacancies notified to JobCentre Plus in Cumbria in the month to 8th April 2011 was 2,580 a rise of 148 compared to the number notified in March and 218 more than were notified in the same month last year.

Note: We have now changed to using a standardised 4 1/3 week period for notified vacancies which removes the issue of comparability between 4 and 5 week periods.

JSA Claimant to Vacancy Ratio

The ratio of claimants to *live unfilled* vacancies in Cumbria was 4.96 in April 2011 (GB 5.76). The ratio was especially high in Barrow (22.63) where there was a particularly low number of unfilled vacancies, and in Copeland (13.86).

RESIDENCE-BASED CLAIMANT COUNTS & RATES – Apr 2011

Table 1

National, County, Districts, Travel to Work Areas & Parliamentary Constituencies										
	Male		Female		All Persons		All Persons			
	No	Rate	No	Rate	No	Rate	Monthly Change		Annual Change	
	No	Rate	No	Rate	No	Rate	No	Rate	No	Rate
Cumbria	5,940	3.8	2,633	1.7	8,573	2.8	-159	-0.1	357	0.1
North West	130,255	5.8	56,553	2.5	186,808	4.2	437	0.0	-5,020	-0.1
United Kingdom	1,034,182	5.2	486,624	2.4	1,520,806	3.8	-6,140	0.0	-47,322	-0.1
Great Britain	990,917	5.1	470,727	2.4	1,461,644	3.7	-5,341	0.0	-50,634	-0.1
District										
Allerdale	1,336	4.6	537	1.8	1,873	3.2	-50	-0.1	126	0.2
Barrow in Furness	1,221	5.5	567	2.5	1,788	4.0	17	0.0	111	0.2
Carlisle	1,391	4.1	640	1.9	2,031	3.0	-43	-0.1	46	0.1
Copeland	1,175	5.1	502	2.3	1,677	3.8	-8	0.0	150	0.3
Eden	279	1.7	135	0.8	414	1.3	-12	0.0	14	0.0
South Lakeland	538	1.7	252	0.8	790	1.3	-63	-0.1	-90	-0.1
Travel to Work Area										
Barrow in Furness	1,388	4.8	655	2.3	2,043	3.5	8	0.0	106	0.2
Carlisle	1,650	3.9	748	1.8	2,398	2.8	-70	-0.1	28	0.0
Kendal	371	1.4	164	0.6	535	1.0	-54	-0.1	-85	-0.2
Penrith & Appleby	252	1.7	119	0.8	371	1.2	-6	0.0	21	0.1
Whitehaven	1,118	5.0	469	2.2	1,587	3.6	-8	0.0	134	0.3
Workington & Keswick	1,259	5.0	508	2.0	1,767	3.5	-34	-0.1	140	0.3
Lancaster & Morecambe	1,802	3.8	770	1.6	2,572	2.7	8	0.0	62	0.1
Parliamentary Constituency										
Barrow & Furness	1,388	4.8	655	2.3	2,043	3.5	8	0.0	106	0.2
Carlisle	1,234	4.6	560	2.1	1,794	3.4	-45	-0.1	59	0.1
Copeland	1,205	4.6	531	2.1	1,736	3.4	-32	-0.1	139	0.3
Penrith & The Border	494	2.0	241	1.0	735	1.5	-19	0.0	-6	0.0
Westmorland & Lonsdale	371	1.4	164	0.6	535	1.0	-54	-0.1	-85	-0.2
Workington	1,248	5.2	482	2.0	1,730	3.6	-17	0.0	144	0.3

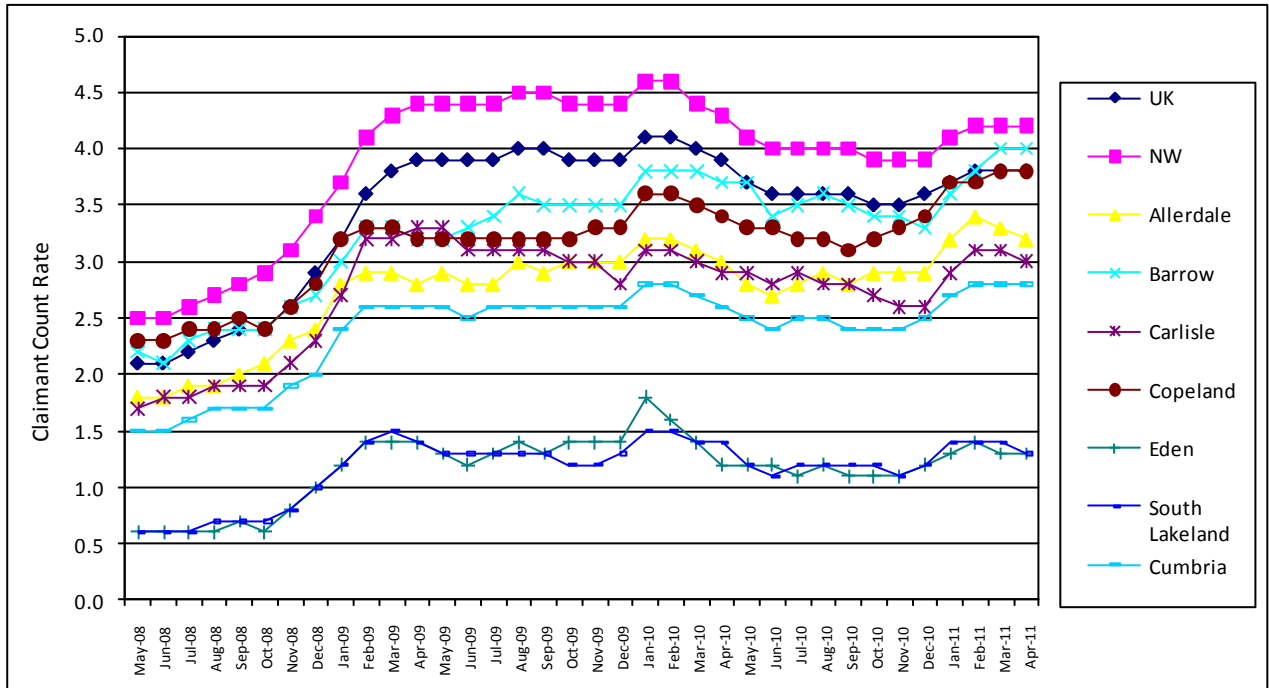
NB: Rates are of the resident working age population

Note 1: From the May 2010 Briefing onwards, Parliamentary Constituencies are the 2010 boundaries.

Note 2: Please note that the definition of working age is now 16-65 for both males and females.

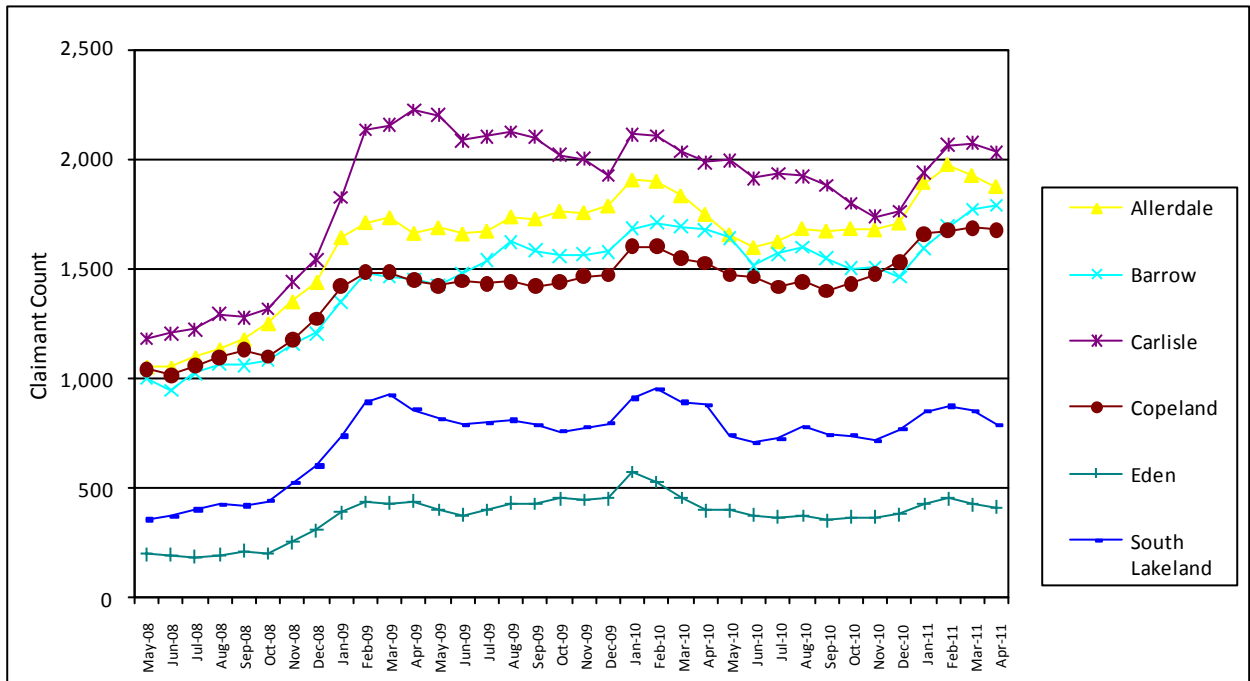
JSA CLAIMANT RATES – 3 Yr Trend

Chart 1



JSA CLAIMANT COUNTS – 3 Yr Trend

Chart 2



RESIDENCE-BASED JSA CLAIMANT COUNTS & RATES – Apr 2011

Locally Defined Areas

Table 2

	Locally Defined Areas									
	Male		Female		All Persons		All Persons			
	No	Rate	No	Rate	No	Rate	Monthly Change		Annual Change	
	No	Rate	No	Rate	No	Rate	No	Rate	No	Rate
Key Service Centres										
Alston KSC	15	2.1	11	1.7	26	1.9	-6	-0.4	-6	-0.4
Ambleside KSC	10	0.9	3	0.2	13	0.5	0	0.0	2	0.1
Appleby KSC	19	2.2	6	0.7	25	1.4	-4	-0.2	-9	-0.5
Aspatia KSC	43	4.1	22	2.0	65	3.0	-6	-0.3	-5	-0.2
Barrow KSC	1,093	5.9	507	2.7	1,600	4.3	20	0.1	121	0.3
Brampton KSC	44	3.3	19	1.4	63	2.4	-13	-0.5	-18	-0.7
Brough KSC	5	1.2	0	0.0	5	0.6	-2	-0.3	-8	-1.0
Carlisle KSC	1,186	5.3	528	2.3	1,714	3.8	-33	-0.1	72	0.2
Cleator Moor KSC	177	7.9	71	3.2	248	5.6	21	0.5	26	0.6
Cockermouth KSC	82	3.4	27	1.1	109	2.2	-5	-0.1	19	0.4
Dalton in Furness KSC	128	3.1	60	1.4	188	2.2	-3	0.0	-10	-0.1
Egremont KSC	153	5.9	69	2.7	222	4.3	7	0.1	41	0.8
Grange KSC	11	1.1	5	0.5	16	0.8	-2	-0.1	-6	-0.3
Grasmere KSC	7	1.2	#	#	8	0.7	3	0.3	-2	-0.2
Hawkshead KSC	5	1.0	6	1.2	11	1.1	2	0.2	8	0.8
Kendal KSC	212	2.4	81	0.9	293	1.7	-10	-0.1	-40	-0.2
Keswick KSC	15	0.9	21	1.3	36	1.1	-16	-0.5	-12	-0.4
Kirkby Lonsdale KSC	3	0.4	4	0.6	7	0.5	-5	-0.4	0	0.0
Kirkby Stephen KSC	19	2.4	11	1.5	30	2.0	-7	-0.5	6	0.4
Lazonby KSC	5	1.1	#	#	7	0.8	-1	-0.1	1	0.1
Longtown KSC	45	3.2	27	2.1	72	2.7	4	0.1	8	0.3
Maryport KSC	301	8.0	109	2.8	410	5.4	2	0.0	32	0.4
Millom KSC	111	3.9	54	2.4	165	3.2	2	0.0	3	0.1
Milnthorpe KSC	12	2.0	3	0.5	15	1.2	-1	-0.1	-1	-0.1
Penrith KSC	119	2.5	53	1.1	172	1.8	6	0.1	16	0.2
Sedbergh KSC	4	0.3	4	0.4	8	0.3	-5	-0.2	-9	-0.4
Silloth KSC	35	3.7	14	1.4	49	2.5	-4	-0.2	4	0.2
Ulverston KSC	117	3.3	65	1.9	182	2.6	-13	-0.2	3	0.0
Whitehaven KSC	451	5.4	177	2.2	628	3.8	-22	-0.1	9	0.1
Wigton KSC	52	3.1	23	1.3	75	2.1	-6	-0.2	-9	-0.3
Windermere KSC	42	1.6	14	0.5	56	1.1	-11	-0.2	10	0.2
Workington KSC	558	7.2	215	2.8	773	5.0	31	0.2	105	0.7
Housing Market Areas										
Alston Moor HMA	15	2.1	11	1.7	26	1.9	-6	-0.4	-6	-0.4
Barrow HMA	1,221	5.4	567	2.5	1,788	3.9	17	0.0	111	0.2
Carlisle HMA	1,200	5.2	535	2.3	1,735	3.7	-33	-0.1	65	0.1
Central Lakes HMA	73	1.2	30	0.5	103	0.8	-15	-0.1	19	0.2
Cockermouth HMA	82	3.4	27	1.1	109	2.2	-5	-0.1	19	0.4
Eden Valley North HMA	161	1.9	76	0.9	237	1.4	7	0.0	20	0.1
Eden Valley South HMA	82	1.5	39	0.7	121	1.1	-9	-0.1	-3	0.0
Kendal HMA	212	2.4	81	0.9	293	1.7	-10	-0.1	-40	-0.2
Millom HMA	111	3.9	54	2.4	165	3.2	2	0.0	3	0.1
North Lakes - East HMA	21	1.1	9	0.5	30	0.8	-4	-0.1	3	0.1
North Lakes - West HMA	28	0.9	31	1.0	59	0.9	-22	-0.3	-10	-0.2
Rural Carlisle East HMA	151	2.0	79	1.1	230	1.5	-9	-0.1	-16	-0.1
Rural Carlisle West HMA	40	1.5	26	1.0	66	1.3	-1	0.0	-3	-0.1
Rural Kendal HMA	54	0.8	36	0.5	90	0.6	-17	-0.1	-31	-0.2
Sedbergh HMA	4	0.3	4	0.4	8	0.3	-5	-0.2	-9	-0.4
Ulverston and Furness HMA	167	2.7	88	1.4	255	2.1	-9	-0.1	-5	0.0
West Lakes HMA	46	1.8	20	0.8	66	1.3	-20	-0.4	-3	-0.1
Whitehaven HMA	1,018	5.7	428	2.5	1,446	4.1	10	0.0	150	0.4
Wigton HMA	86	2.2	41	1.0	127	1.6	-7	-0.1	-3	0.0
Workington and Maryport HMA	1,140	5.7	438	2.2	1,578	3.9	-16	0.0	120	0.3

Labour Market Briefing May 2011

Table 2 (Contd)

	Locally Defined Areas									
	Male		Female		All Persons		All Persons			
	No	Rate	No	Rate	No	Rate	Monthly Change		Annual Change	
	No	Rate	No	Rate	No	Rate	No	Rate	No	Rate
Childrens' Services Local Delivery Project Areas										
Alston CS LDP	15	2.1	11	1.7	26	1.9	-6	-0.4	-6	-0.4
Brampton CS LDP	165	2.0	86	1.1	251	1.5	-9	-0.1	-23	-0.1
Cleator Moor & Egremont CS LDP	493	5.2	205	2.2	698	3.7	20	0.1	105	0.6
Carlisle North CS LDP	93	2.6	45	1.2	138	1.9	4	0.1	24	0.3
Carlisle South CS LDP	554	5.9	252	2.6	806	4.2	-39	-0.2	-15	-0.1
Carlisle West CS LDP	550	5.4	236	2.3	786	3.9	-4	0.0	53	0.3
Cockermouth & Keswick CS LDP	137	2.0	74	1.0	211	1.5	-38	-0.3	-4	0.0
Dalston CS LDP	29	1.5	21	1.1	50	1.3	5	0.1	7	0.2
Furness CS LDP	1,388	4.8	655	2.3	2,043	3.5	8	0.0	106	0.2
Grange CS LDP	26	1.0	13	0.5	39	0.7	-12	-0.2	-18	-0.3
Kendal CS LDP	232	2.2	92	0.8	324	1.5	-11	-0.1	-45	-0.2
Kirkby Lonsdale CS LDP	3	0.4	4	0.6	7	0.5	-5	-0.4	0	0.0
Lakes CS LDP	24	0.8	12	0.4	36	0.6	0	0.0	4	0.1
Maryport CS LDP	340	7.1	120	2.5	460	4.8	-8	-0.1	28	0.3
Middle Eden CS LDP	41	1.4	22	0.7	63	1.0	1	0.0	0	0.0
Milnthorpe CS LDP	31	0.7	21	0.5	52	0.6	-11	-0.1	-26	-0.3
North Allerdale CS LDP	199	2.5	98	1.2	297	1.8	-26	-0.2	-11	-0.1
Penrith CS LDP	187	1.8	85	0.8	272	1.3	1	0.0	25	0.1
Sedbergh CS LDP	4	0.3	4	0.4	8	0.3	-5	-0.2	-9	-0.4
South Copeland CS LDP	128	3.4	63	2.0	191	2.8	1	0.0	8	0.1
Upper Eden CS LDP	36	1.5	17	0.7	53	1.1	-8	-0.2	-5	-0.1
Whitehaven CS LDP	554	5.5	234	2.4	788	4.0	-29	-0.1	37	0.2
Windermere CS LDP	51	1.5	18	0.5	69	1.0	-10	-0.2	9	0.1
Workington CS LDP	660	6.7	245	2.5	905	4.6	22	0.1	113	0.6
Health Areas										
Carlisle City South (Health)	1,093	5.8	483	2.5	1,576	4.2	-37	-0.1	48	0.1
Cockermouth & Keswick (Health)	137	2.0	74	1.0	211	1.5	-38	-0.3	-4	0.0
Maryport (Health)	340	7.1	120	2.5	460	4.8	-8	-0.1	28	0.3
Mid Copeland (Health)	493	5.2	205	2.2	698	3.7	20	0.1	105	0.6
North Allerdale (Health)	199	2.5	98	1.2	297	1.8	-26	-0.2	-11	-0.1
South Copeland (Health)	128	3.4	63	2.0	191	2.8	1	0.0	8	0.1
Whitehaven (Health)	554	5.5	234	2.4	788	4.0	-29	-0.1	37	0.2
Workington (Health)	660	6.7	245	2.5	905	4.6	22	0.1	113	0.6
West Cumbria Partnership Areas										
Cleator Moor WCP	265	6.6	108	2.8	373	4.7	27	0.3	51	0.6
Cockermouth WCP	121	2.5	51	1.0	172	1.8	-20	-0.2	9	0.1
Egremont WCP	206	5.0	86	2.1	292	3.6	6	0.1	53	0.7
Keswick WCP	16	0.7	23	1.1	39	0.9	-18	-0.4	-13	-0.3
Maryport WCP	340	7.1	120	2.5	460	4.8	-8	-0.1	28	0.3
Mid Copeland WCP	22	1.7	11	0.9	33	1.3	-13	-0.5	1	0.0
Millom WCP	128	3.4	63	2.0	191	2.8	1	0.0	8	0.1
North Allerdale WCP	199	2.5	98	1.2	297	1.8	-26	-0.2	-11	-0.1
Whitehaven WCP	554	5.5	234	2.4	788	4.0	-29	-0.1	37	0.2
Workington WCP	660	6.7	245	2.5	905	4.6	22	0.1	113	0.6
Other Areas										
Lake District National Park	197	1.2	109	0.7	306	0.9	-52	-0.2	-6	0.0
Keswick Market Town Initiative	16	0.7	23	1.1	39	0.9	-18	-0.4	-13	-0.3
Longtown Market Town Initiative	52	2.5	31	1.6	83	2.1	2	0.0	2	0.0
Penrith Market Town Initiative	202	1.8	95	0.8	297	1.3	6	0.0	29	0.1
Ulverston Market Town Initiative	156	2.8	85	1.6	241	2.2	-10	-0.1	8	0.1

NB: Counts of less than 3 are denoted by a #. Wards are Census 2003 wards.

Note 1: Rates are of the Working Age Population.

Note 2: Please note that the definition of working age is now 16-65 for both males and females.

JSA CLAIMANT USUAL AND SOUGHT OCCUPATION – Apr 2011

Table 3

OCCUPATION	Usual Occupation			Sought Occupation		
	Male	Female	Total	Male	Female	Total
Occupation unknown	40	55	100	40	55	100
Managers and Senior Officials	195	80	275	190	80	270
Professional Occupations	130	55	185	130	55	190
Associate Professional and Technical Occupations	245	100	345	250	95	345
Administrative and Secretarial Occupations	310	450	755	310	450	760
Skilled Trades Occupations	1,040	30	1,065	1,035	30	1,065
Personal Service Occupations	120	365	485	130	365	495
Sales and Customer Service occupations	830	885	1,715	830	895	1,725
Process, Plant and Machine Operatives	875	75	950	875	70	945
Elementary Occupations	2,115	530	2,645	2,100	525	2,625

Note: This dataset records the usual & sought occupation given by the claimant when registering for Job Seekers' Allowance. Values are rounded to the nearest 5 and therefore may not sum.

JSA CLAIMANT FLOWS – Apr 2011

Table 4

DISTRICT/TTWA	Male		Female		All Persons	
	Off Flow	On Flow	Off Flow	On Flow	Off Flow	On Flow
Cumbria	1,501	1,388	710	701	2,211	2,089
Allerdale	280	258	131	113	411	371
Barrow in Furness	285	270	117	154	402	425
Carlisle	389	361	180	181	569	543
Copeland	253	248	118	114	371	361
Eden	93	88	54	51	146	139
South Lakeland	201	162	110	88	311	250
Barrow in Furness TTWA	330	309	146	180	477	489
Carlisle TTWA	452	408	213	209	665	617
Kendal TTWA	156	124	81	62	237	186
Penrith & Appleby TTWA	85	83	48	44	133	127
Whitehaven TTWA	239	237	114	108	353	346
Workington & Keswick TTWA	259	237	116	107	375	345
Lancaster & Morecambe TTWA	437	430	195	210	632	640

Note: This dataset counts those who ended or started a claim during the previous month.

JSA CLAIMANT DESTINATIONS – Apr 2011

Table 5a

	Reason for Leaving the Register - Number									
	Allerdale	Barrow	Carlisle	Copeland	Eden	South Lakeland	Cumbria	North West	United Kingdom	
Found work	220	190	265	180	80	195	1,130	20,305	160,385	
Increased work to 16+ hours/week	0	0	0	0	0	0	10	135	1,790	
Gone abroad	10	15	10	15	0	15	70	1,265	10,510	
Claimed Income Support	0	5	5	5	5	0	25	505	4,110	
Claimed Incapacity Benefit	5	0	0	5	0	0	20	400	2,635	
Claimed another benefit	5	5	15	5	0	5	35	550	4,275	
Gone to full-time education	0	0	0	0	0	0	5	155	1,455	
Gone onto approved training	0	0	0	0	0	0	0	15	215	
Transfer to Govt-supported training	55	65	50	55	10	20	250	2,920	29,140	
Retirement age reached	0	0	0	0	0	0	5	25	170	
Automatic credits payable	0	0	0	0	0	0	0	5	20	
Claimed back-to-work bonus	0	0	0	0	0	0	0	0	0	
Gone to prison	5	5	15	5	0	0	35	375	2,645	
Attending court	0	0	0	0	0	0	0	0	5	
New claim review	5	0	0	0	0	0	5	310	2,995	
Defective claim	5	0	0	5	0	5	15	535	2,150	
Ceased claiming	5	20	25	20	5	10	85	995	8,465	
Deceased	0	0	0	0	0	0	0	5	85	
Not known	65	30	50	45	10	20	230	5,115	35,980	
Failed to sign	95	120	215	90	45	75	640	12,500	98,455	
Total	475	465	655	430	170	360	2,550	46,125	365,485	

Values are rounded to the nearest 5.

Table 5b

	Reason for Leaving the Register - Proportion									
	Allerdale	Barrow	Carlisle	Copeland	Eden	South Lakeland	Cumbria	North West	United Kingdom	
Found work	69.7	61.3	67.9	60.3	73.2	75.8	67.3	71.2	69.4	
Increased work to 16+ hours/week	0.6	0.0	0.5	0.7	1.8	0.4	0.5	0.5	0.8	
Gone abroad	3.8	4.8	2.6	5.4	1.8	6.2	4.2	4.4	4.5	
Claimed Income Support	0.3	1.6	1.3	2.4	3.6	0.8	1.4	1.8	1.8	
Claimed Incapacity Benefit	1.9	0.6	0.3	1.7	1.8	0.8	1.1	1.4	1.1	
Claimed another benefit	1.0	2.3	3.3	1.4	0.9	2.3	2.0	1.9	1.8	
Gone to full-time education	0.0	0.0	0.0	0.7	0.0	0.4	0.2	0.5	0.6	
Gone onto approved training	0.3	0.0	0.0	0.0	0.0	0.0	0.1	0.1	0.1	
Transfer to Govt-supported training	16.9	20.6	13.3	18.0	9.8	6.9	14.9	10.2	12.6	
Retirement age reached	0.3	0.3	0.0	0.0	0.9	0.0	0.2	0.1	0.1	
Automatic credits payable	0.0	0.0	0.0	0.0	0.0	0.0	0.0	0.0	0.0	
Claimed back-to-work bonus	0.0	0.0	0.0	0.0	0.0	0.0	0.0	0.0	0.0	
Gone to prison	2.2	1.3	3.8	2.0	0.9	0.8	2.1	1.3	1.1	
Attending court	0.0	0.0	0.0	0.0	0.0	0.0	0.0	0.0	0.0	
New claim review	1.0	0.3	0.0	0.0	0.9	0.4	0.4	1.1	1.3	
Defective claim	1.0	0.0	0.5	1.4	0.9	1.2	0.8	1.9	0.9	
Ceased claiming	1.0	6.8	6.6	6.1	3.6	4.2	4.9	3.5	3.7	
Deceased	0.0	0.0	0.0	0.0	0.0	0.0	0.0	0.0	0.0	

Note: Proportions are of those who gave a reason for leaving the register (ie total does not include failed to sign or not known)

JSA CLAIMANTS BY AGE – Apr 2011

Table 6

	Aged 16-64		Aged 16-24		Aged 25-49		Aged 50-64	
	number	rate	number	rate	number	rate	number	rate
Cumbria	8,520	2.7	2,670	5.3	4,580	3.0	1,270	1.2
North West	186,320	4.2	55,400	6.3	104,985	4.5	25,935	2.0
United Kingdom	1,516,005	3.8	434,475	5.8	850,960	4.0	230,565	2.1
Allerdale	1,855	3.2	550	6.1	1,035	3.5	270	1.3
Barrow	1,785	4.0	630	7.8	930	4.1	225	1.6
Carlisle	2,020	3.0	610	5.0	1,110	3.2	300	1.4
Copeland	1,665	3.7	555	7.8	855	3.8	260	1.7
Eden	415	1.3	115	2.5	225	1.4	75	0.6
South Lakeland	785	1.3	210	2.3	430	1.4	145	0.6

Note: Percentages are of all the working age population in each age group

LONG TERM JSA CLAIMANTS (over 6 months) – Apr 2011

Table 7

	Aged 16-64		Aged 16-24		Aged 25-49		Aged 50-64	
	number	rate	number	rate	number	rate	number	rate
Cumbria	2,345	0.8	300	0.6	1,570	1.0	475	0.4
North West	60,255	1.4	10,045	1.2	39,540	1.7	10,675	0.8
United Kingdom	501,935	1.3	87,220	1.2	319,750	1.5	94,960	0.8
Allerdale	605	1.0	80	0.9	400	1.4	125	0.6
Barrow	445	1.0	65	0.8	305	1.3	80	0.6
Carlisle	540	0.8	45	0.4	375	1.1	115	0.6
Copeland	490	1.1	70	1.0	325	1.4	95	0.6
Eden	90	0.3	10	0.2	60	0.4	20	0.2
South Lakeland	170	0.3	25	0.3	105	0.3	40	0.2

Note: Percentages are of all the working age population in each age group

LONG TERM JSA CLAIMANTS (over 12 months) – Apr 2011

Table 8

	Aged 16-64		Aged 16-24		Aged 25-49		Aged 50-64	
	number	rate	number	rate	number	rate	number	rate
Cumbria	850	0.3	15	0.0	640	0.4	195	0.2
North West	26,285	0.6	2,055	0.2	18,730	0.8	5,500	0.4
United Kingdom	217,440	0.5	16,810	0.2	151,160	0.7	49,475	0.4
Allerdale	210	0.4	0	0.0	160	0.5	50	0.2
Barrow	145	0.3	5	0.0	115	0.5	25	0.2
Carlisle	215	0.3	5	0.0	155	0.5	50	0.2
Copeland	190	0.4	0	0.0	145	0.6	45	0.3
Eden	25	0.1	0	0.0	20	0.1	5	0.1
South Lakeland	65	0.1	5	0.0	40	0.1	20	0.1

Note: Percentages are of all the working age population in each age group

NOTIFIED VACANCIES BY INDUSTRY – Apr 2011

Table 9a

Industry	Area							Cumbria	
	Allerdale	Barrow	Carlisle	Copeland	Eden	South Lakeland	Cumbria	Monthly Change	Annual Change
Agriculture & Fishing	0	#	#	0	#	6	9	-8	-19
Energy & Water	0	#	0	9	#	8	20	-66	20
Manufacturing	9	9	12	11	7	9	56	-10	-32
Construction	3	4	10	0	6	4	28	-41	-42
Retail, Hotels & Restaurants	217	64	315	65	124	275	1,060	431	270
Transport & Comms	13	3	14	8	15	10	62	15	-5
Banking, Finance etc	137	94	284	72	185	166	939	-199	-36
Public Administration	45	12	57	29	23	160	327	63	57
Other Service	23	#	23	10	0	23	81	-35	8
Total	446	190	718	205	362	660	2,580	148	218
<i>Total Monthly Change</i>	<i>67</i>	<i>-8</i>	<i>-62</i>	<i>18</i>	<i>126</i>	<i>9</i>	<i>148</i>		
<i>Total Annual Change</i>	<i>130</i>	<i>-44</i>	<i>-44</i>	<i>-4</i>	<i>144</i>	<i>37</i>	<i>218</i>		

NB: Reporting months are now on a standardised 4 1/3 basis in order to smooth out variations due to differing time periods.

LIVE UNFILLED VACANCIES BY INDUSTRY – Apr 2011

Table 9b

Industry	Area							Cumbria	
	Allerdale	Barrow	Carlisle	Copeland	Eden	South Lakeland	Cumbria	Monthly Change	Annual Change
Agriculture & Fishing	0	0	1	0	1	6	8	-8	-11
Energy & Water	0	1	0	0	1	1	3	-75	1
Manufacturing	5	6	7	0	24	2	44	0	-16
Construction	1	2	3	0	0	3	9	-17	-53
Retail, Hotels & Restaurants	221	37	194	32	103	203	790	313	110
Transport & Comms	4	2	9	6	4	10	35	9	-5
Banking, Finance etc	88	21	210	63	122	124	628	-74	-134
Public Administration	14	10	17	10	11	81	143	-25	-37
Other Service	9	0	25	10	0	24	68	-44	10
Total	342	79	466	121	266	454	1,728	79	-135
<i>Total Monthly Change</i>	<i>84</i>	<i>-39</i>	<i>-15</i>	<i>5</i>	<i>76</i>	<i>-32</i>	<i>79</i>		
<i>Total Annual Change</i>	<i>35</i>	<i>-250</i>	<i>44</i>	<i>-5</i>	<i>86</i>	<i>-45</i>	<i>-135</i>		

Note: The Jobcentre Plus vacancies dataset does not provide comprehensive measures relating to all vacancies in the economy. The proportion of vacancies which are notified by employers varies over time, according to the occupation and industry of the area and labour market conditions. Notified vacancies are those placed with Jobcentre Plus during the month. Live Unfilled vacancies are those for which a jobseeker can actively apply on the day the count is taken.

JSA CLAIMANT TO VACANCY RATIO - Apr 2011

Vacancy data can be used in conjunction with the claimant count to calculate a simple 'claimant to vacancy ratio'. This uses the number of live unfilled vacancies in a month, together with the number of claimants. A claimant/vacancy figure of more than 1 means that there are more claimants than live vacancies.

Table 10

	Claimant count	Live vacancies	Claimant/vacancy ratio
Great Britain	1,461,644	253,698	5.76
Cumbria	8,573	1,728	4.96
Allerdale	1,873	342	5.48
Barrow in Furness	1,788	79	22.63
Carlisle	2,031	466	4.36
Copeland	1,677	121	13.86
Eden	414	266	1.56
South Lakeland	790	454	1.74

Note: The Jobcentre Plus vacancies dataset does not provide comprehensive measures relating to all vacancies in the economy. The proportion of vacancies which are notified by employers varies over time, according to the occupation and industry of the area and labour market conditions. Notified vacancies are those placed with Jobcentre Plus during the month, Live Unfilled vacancies are those for which a jobseeker can actively apply on the day the count is taken.

For definitions of areas or for further information, please contact
Ginny Murphy, Research Manager, Invest in Cumbria
Tel: 01768 895363 E-mail: ginnym@investincumbria.co.uk

Copies of previous releases, together with other labour market and economic data, can be found on the following website: www.cumbriaobservatory.org.uk

RESIDENCE-BASED JSA CLAIMANT COUNTS & RATES – Apr 2011

Wards

WARD	Male		Female		All Persons		All Persons			
	No	Rate	No	Rate	No	Rate	Monthly Change		Annual Change	
							No	Rate	No	Rate
ALLERDALE										
All Saints	47	3.3	16	1.0	63	2.1	-8	-0.3	3	0.1
Aspatria	43	4.1	22	2.0	65	3.0	-6	-0.3	-5	-0.2
Boltons	4	0.7	6	1.1	10	0.9	-2	-0.2	3	0.3
Broughton St Bridget's	25	1.8	18	1.3	43	1.6	-9	-0.3	-12	-0.4
Christchurch	35	3.5	11	1.1	46	2.3	3	0.1	16	0.8
Clifton	37	7.6	11	2.3	48	5.0	-4	-0.4	-1	-0.1
Crummock	8	1.6	#	#	10	1.0	-2	-0.2	0	0.0
Dalton	6	1.2	4	0.8	10	1.0	-4	-0.4	2	0.2
Derwent Valley	#	#	#	#	3	0.3	-2	-0.2	-1	-0.1
Ellen	39	3.8	11	1.1	50	2.5	-10	-0.5	-4	-0.2
Ellenborough	81	6.8	29	2.4	110	4.5	1	0.0	-15	-0.6
Ewanrigg	110	10.7	37	3.4	147	7.0	-3	-0.1	20	1.0
Flimby	34	6.5	15	2.8	49	4.6	1	0.1	15	1.4
Harrington	27	2.7	9	1.0	36	1.9	-7	-0.4	1	0.1
Holme	13	2.5	7	1.4	20	2.0	-5	-0.5	1	0.1
Keswick	15	0.9	21	1.3	36	1.1	-16	-0.5	-12	-0.4
Marsh	11	2.1	4	0.8	15	1.4	3	0.3	9	0.9
Moorclose	121	8.5	60	3.9	181	6.1	8	0.3	40	1.4
Moss Bay	159	12.3	70	4.9	229	8.4	10	0.4	36	1.3
Netherhall	76	7.4	28	2.8	104	5.1	3	0.1	12	0.6
Seaton	65	4.1	19	1.2	84	2.7	-5	-0.2	9	0.3
Silloth	35	3.7	14	1.4	49	2.5	-4	-0.2	4	0.2
Solway	11	2.1	5	0.9	16	1.5	-2	-0.2	-9	-0.9
St John's	97	5.8	25	1.6	122	3.7	4	0.1	32	1.0
St Michael's	140	8.0	46	2.9	186	5.6	15	0.4	-10	-0.3
Stainburn	14	2.4	5	0.9	19	1.7	1	0.1	6	0.5
Wampool	11	2.1	6	1.2	17	1.6	-1	-0.1	-1	-0.1
Warnell	6	1.0	3	0.5	9	0.8	-3	-0.3	2	0.2
Waver	6	1.0	5	0.9	11	1.0	0	0.0	-4	-0.3
Wharrels	7	1.4	3	0.6	10	1.0	0	0.0	-2	-0.2
Wigton	52	3.1	23	1.3	75	2.1	-6	-0.2	-9	-0.3
BARROW										
Barrow Island	107	11.2	38	4.7	145	8.2	8	0.5	-9	-0.5
Central	206	11.9	98	5.6	304	8.7	5	0.1	25	0.7
Dalton North	68	3.1	25	1.2	93	2.2	-5	-0.1	-5	-0.1
Dalton South	60	3.0	35	1.7	95	2.3	2	0.0	-5	-0.1
Hawcoat	22	1.5	17	1.2	39	1.3	3	0.1	1	0.0
Hindpool	143	8.5	74	4.3	217	6.4	-9	-0.3	-7	-0.2
Newbarns	72	3.9	33	1.8	105	2.8	-4	-0.1	12	0.3
Ormsgill	152	8.0	72	3.6	224	5.7	14	0.4	25	0.6
Parkside	65	3.6	35	2.0	100	2.8	1	0.0	12	0.3
Risedale	121	6.7	48	2.7	169	4.7	7	0.2	5	0.1
Roosecote	58	3.0	35	1.7	93	2.3	-4	-0.1	15	0.4
Walney North	77	4.7	27	1.6	104	3.1	3	0.1	21	0.6
Walney South	70	3.9	30	1.7	100	2.8	-4	-0.1	21	0.6

NB: Counts of less than 3 are denoted by a #. Wards are Census 2003 wards.

Note 1: Rates are of the Working Age Population.

Note 2: Please note that the definition of working age is now 16-65 for both males and females.

Labour Market Briefing May 2011

WARD	Male		Female		All Persons		All Persons			
							Monthly Change		Annual Change	
	No	Rate	No	Rate	No	Rate	No	Rate		
CARLISLE										
Belah	68	3.7	25	1.3	93	2.5	3	0.1	11	0.3
Belle Vue	97	5.7	54	2.9	151	4.2	-9	-0.3	20	0.6
Botcherby	121	6.7	55	2.7	176	4.6	-14	-0.4	-23	-0.6
Brampton	44	3.3	19	1.4	63	2.4	-13	-0.5	-18	-0.7
Burgh	11	1.6	5	0.8	16	1.2	-6	-0.4	-10	-0.7
Castle	162	7.3	58	3.0	220	5.3	-2	0.0	-8	-0.2
Currock	120	5.9	56	2.8	176	4.4	4	0.1	16	0.4
Dalston	29	1.5	21	1.1	50	1.3	5	0.1	7	0.2
Denton Holme	120	6.0	51	2.5	171	4.2	8	0.2	18	0.4
Great Corby and Geltsdale	16	2.3	3	0.4	19	1.4	9	0.7	4	0.3
Harraby	76	4.2	39	2.1	115	3.1	-12	-0.3	1	0.0
Hayton	14	2.2	7	1.1	21	1.6	0	0.0	-7	-0.5
Irthing	17	2.5	6	1.0	23	1.8	6	0.5	11	0.8
Longtown & Rockcliffe	45	3.2	27	2.1	72	2.7	4	0.1	8	0.3
Lyne	7	1.0	4	0.6	11	0.8	-2	-0.1	-6	-0.4
Morton	108	6.6	38	2.3	146	4.5	-5	-0.2	14	0.4
St Aidans	115	5.5	50	2.5	165	4.0	-13	-0.3	-6	-0.1
Stanwix Rural	14	1.0	14	1.0	28	1.0	-2	-0.1	-5	-0.2
Stanwix Urban	25	1.4	20	1.1	45	1.3	1	0.0	13	0.4
Upperby	122	7.4	52	3.1	174	5.3	-4	-0.1	-3	-0.1
Wetheral	8	0.6	6	0.4	14	0.5	-11	-0.4	-10	-0.4
Yewdale	52	2.7	30	1.5	82	2.1	10	0.3	19	0.5
COPELAND										
Arlecdon	15	2.7	10	1.9	25	2.3	-1	-0.1	10	0.9
Beckermet	45	4.8	15	1.7	60	3.3	4	0.2	19	1.0
Bootle	8	2.0	5	1.2	13	1.6	-3	-0.4	3	0.4
Bransty	38	2.2	24	1.5	62	1.8	-3	-0.1	2	0.1
Cleator Moor North	109	7.9	42	3.1	151	5.5	13	0.5	23	0.8
Cleator Moor South	68	8.0	29	3.4	97	5.7	8	0.5	3	0.2
Distinguon	87	6.7	46	3.5	133	5.1	-2	-0.1	24	0.9
Egremont North	82	6.1	43	3.0	125	4.5	7	0.3	23	0.8
Egremont South	71	5.7	26	2.3	97	4.1	0	0.0	18	0.8
Ennerdale	7	1.9	0	0.0	7	1.0	-6	-0.8	-9	-1.3
Frizington	66	7.8	27	3.2	93	5.5	13	0.8	24	1.4
Gosforth	5	1.1	3	0.7	8	0.9	-2	-0.2	2	0.2
Harbour	96	6.8	38	3.4	134	5.3	-16	-0.6	-22	-0.9
Haverigg	9	0.9	5	1.2	14	1.0	0	0.0	3	0.2
Hensingham	68	5.3	30	2.1	98	3.6	-6	-0.2	10	0.4
Hillcrest	20	2.2	6	0.7	26	1.5	2	0.1	11	0.6
Holborn Hill	37	4.7	20	2.5	57	3.6	1	0.1	-5	-0.3
Kells	31	4.2	12	1.6	43	2.9	3	0.2	11	0.7
Millom Without	9	1.8	4	0.9	13	1.4	2	0.2	2	0.2
Mirehouse	128	9.3	37	2.6	165	5.9	-3	-0.1	-7	-0.2
Moresby	16	4.0	11	2.6	27	3.3	-5	-0.6	4	0.5
Newtown	65	5.9	29	2.7	94	4.3	1	0.0	5	0.2
Sandwith	70	8.4	30	3.4	100	5.8	1	0.1	4	0.2
Seascale	17	2.0	8	1.0	25	1.5	-11	-0.6	-1	-0.1
St Bees	8	1.4	#	#	10	0.9	-5	-0.5	-7	-0.6

NB: Counts of less than 3 are denoted by a #. Wards are Census 2003 wards.

Note 1: Rates are of the Working Age Population.

Note 2: Please note that the definition of working age is now 16-65 for both males and females.

Labour Market Briefing May 2011

WARD	Male		Female		All Persons		All Persons			
							Monthly Change		Annual Change	
	No	Rate	No	Rate	No	Rate	No	Rate		
EDEN										
Alston Moor	15	2.1	11	1.7	26	1.9	-6	-0.4	-6	-0.4
Appleby (Appleby)	12	3.6	3	0.8	15	2.1	-1	-0.1	1	0.1
Appleby (Bongate)	7	1.3	3	0.6	10	0.9	-3	-0.3	-10	-0.9
Askham	6	1.3	3	0.6	9	0.9	-4	-0.4	2	0.2
Brough	5	1.2	0	0.0	5	0.6	-2	-0.3	-8	-1.0
Crosby Ravensworth	4	0.8	#	#	6	0.6	1	0.1	1	0.1
Dacre	3	0.7	5	1.1	8	0.9	1	0.1	1	0.1
Eamont	9	2.3	4	1.0	13	1.6	2	0.2	4	0.5
Greystoke	3	0.7	0	0.0	3	0.3	0	0.0	#	0.1
Hartside	4	1.1	4	1.0	8	1.1	4	0.5	2	0.3
Hesket	16	1.7	7	0.7	23	1.2	-1	-0.1	-3	-0.2
Kirkby Stephen	19	2.4	11	1.5	30	2.0	-7	-0.5	6	0.4
Kirkby Thore	8	1.6	5	1.0	13	1.3	1	0.1	6	0.6
Kirkoswald	6	1.2	#	#	7	0.7	1	0.1	2	0.2
Langwathby	4	0.8	#	#	6	0.6	-1	-0.1	2	0.2
Lazonby	5	1.1	#	#	7	0.8	-1	-0.1	1	0.1
Long Marton	3	0.8	4	1.0	7	0.9	-1	-0.1	4	0.5
Morland	3	0.7	#	#	4	0.5	0	0.0	-4	-0.5
Orton with Tebay	6	1.2	4	0.8	10	1.0	2	0.2	2	0.2
Penrith Carleton	4	0.9	#	#	6	0.6	-1	-0.1	-5	-0.5
Penrith East	28	3.5	13	1.6	41	2.6	6	0.4	20	1.2
Penrith North	24	1.9	9	0.7	33	1.3	-5	-0.2	-12	-0.5
Penrith Pategill	14	3.9	6	1.5	20	2.6	9	1.2	5	0.7
Penrith South	19	2.8	8	1.2	27	2.0	-2	-0.1	11	0.8
Penrith West	30	2.7	15	1.5	45	2.1	-1	0.0	-3	-0.1
Ravenstonedale	3	1.0	#	#	5	0.9	1	0.2	1	0.2
Shap	7	1.5	3	0.7	10	1.1	0	0.0	-2	-0.2
Skelton	4	0.8	#	#	6	0.6	-2	-0.2	-1	-0.1
Ullswater	5	1.1	3	0.6	8	0.9	0	0.0	2	0.2
Warcop	3	0.7	0	0.0	3	0.4	-2	-0.2	-6	-0.7

NB: Counts of less than 3 are denoted by a #. Wards are Census 2003 wards.

Note 1: Rates are of the Working Age Population.

Note 2: Please note that the definition of working age is now 16-65 for both males and females.

Labour Market Briefing May 2011

WARD	Male		Female		All Persons		All Persons			
							Monthly Change		Annual Change	
	No	Rate	No	Rate	No	Rate	No	Rate		
SOUTH LAKELAND										
Arnside & Beetham	8	0.7	#	#	9	0.4	-6	-0.3	-10	-0.4
Broughton	11	1.5	3	0.4	14	1.0	1	0.1	-13	-0.9
Burneside	8	1.3	7	1.1	15	1.2	5	0.4	4	0.3
Burton & Holme	6	0.6	3	0.3	9	0.5	0	0.0	-5	-0.3
Cartmel	3	0.6	4	0.7	7	0.7	-3	-0.3	-7	-0.7
Coniston	#	#	#	#	4	0.3	-5	-0.4	-4	-0.3
Crake Valley	11	1.8	6	1.0	17	1.4	2	0.2	0	0.0
Crooklands	3	0.4	4	0.5	7	0.5	-5	-0.3	-5	-0.3
Grange	11	1.1	5	0.5	16	0.8	-2	-0.1	-6	-0.3
Hawkshead	5	1.0	6	1.2	11	1.1	2	0.2	8	0.8
Holker	5	0.9	0	0.0	5	0.5	-3	-0.3	-10	-0.9
Kendal Castle	8	1.5	5	0.9	13	1.2	0	0.0	2	0.2
Kendal Far Cross	13	2.0	5	0.7	18	1.3	0	0.0	-14	-1.0
Kendal Fell	28	4.6	10	1.7	38	3.2	-6	-0.5	5	0.4
Kendal Glebelands	6	1.1	0	0.0	6	0.5	0	0.0	-7	-0.6
Kendal Heron Hill	8	1.3	4	0.6	12	1.0	0	0.0	1	0.1
Kendal Highgate	21	3.7	9	1.7	30	2.7	5	0.5	-14	-1.3
Kendal Kirkland	25	4.0	9	1.4	34	2.7	-4	-0.3	-14	-1.1
Kendal Mintsfeet	22	3.0	4	0.6	26	1.8	-5	-0.3	-9	-0.6
Kendal Nether	6	1.2	4	0.8	10	1.0	2	0.2	-1	-0.1
Kendal Oxenholme	21	2.8	5	0.6	26	1.7	1	0.1	-3	-0.2
Kendal Parks	9	1.2	7	0.9	16	1.1	-1	-0.1	4	0.3
Kendal Stonecross	11	2.1	3	0.5	14	1.3	4	0.4	5	0.5
Kendal Strickland	11	1.8	6	1.0	17	1.4	0	0.0	1	0.1
Kendal Underley	23	3.6	10	1.5	33	2.5	-6	-0.5	4	0.3
Kirkby Lonsdale	3	0.4	4	0.6	7	0.5	-5	-0.4	0	0.0
Lakes Ambleside	10	0.9	3	0.2	13	0.5	0	0.0	2	0.1
Lakes Grasmere	7	1.2	#	#	8	0.7	3	0.3	-2	-0.2
Levens	#	#	5	1.0	6	0.6	-1	-0.1	0	0.0
Low Furness & Swarthmoor	28	2.2	14	1.1	42	1.6	1	0.0	5	0.2
Lyth Valley	#	#	5	0.8	6	0.5	2	0.2	-5	-0.4
Milnthorpe	12	2.0	3	0.5	15	1.2	-1	-0.1	-1	-0.1
Natland	4	0.7	0	0.0	4	0.3	-5	-0.4	-3	-0.3
Sedbergh	4	0.3	4	0.4	8	0.3	-5	-0.2	-9	-0.4
Staveley-in-Cartmel	7	1.2	4	0.7	11	1.0	-4	-0.4	5	0.4
Staveley-in-Westmorland	9	1.4	4	0.6	13	1.0	1	0.1	-1	-0.1
Ulverston Central	21	3.7	12	2.2	33	2.9	-6	-0.5	-9	-0.8
Ulverston East	39	5.5	21	2.8	60	4.1	2	0.1	11	0.8
Ulverston North	18	3.0	10	1.7	28	2.3	-5	-0.4	2	0.2
Ulverston South	13	2.4	8	1.5	21	1.9	-2	-0.2	5	0.5
Ulverston Town	18	3.1	11	2.1	29	2.6	-3	-0.3	-6	-0.5
Ulverston West	8	1.4	3	0.6	11	1.0	1	0.1	0	0.0
Whinfell	8	1.1	4	0.5	12	0.8	-1	-0.1	-6	-0.4
Windermere Applethwaite	15	2.1	4	0.6	19	1.4	-5	-0.4	7	0.5
Windermere Bowness North	6	1.0	#	#	8	0.6	-3	-0.2	-2	-0.2
Windermere Bowness South	5	0.8	5	0.9	10	0.8	0	0.0	-1	-0.1
Windermere Town	16	2.2	3	0.4	19	1.3	-3	-0.2	6	0.4

NB: Counts of less than 3 are denoted by a #. Wards are Census 2003 wards.

Note 1: Rates are of the Working Age Population.

Note 2: Please note that the definition of working age is now 16-65 for both males and females.