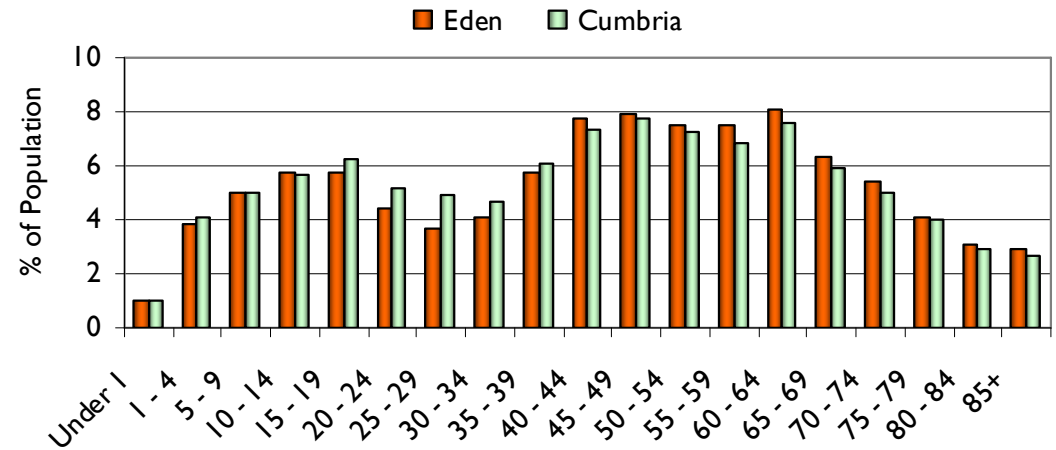
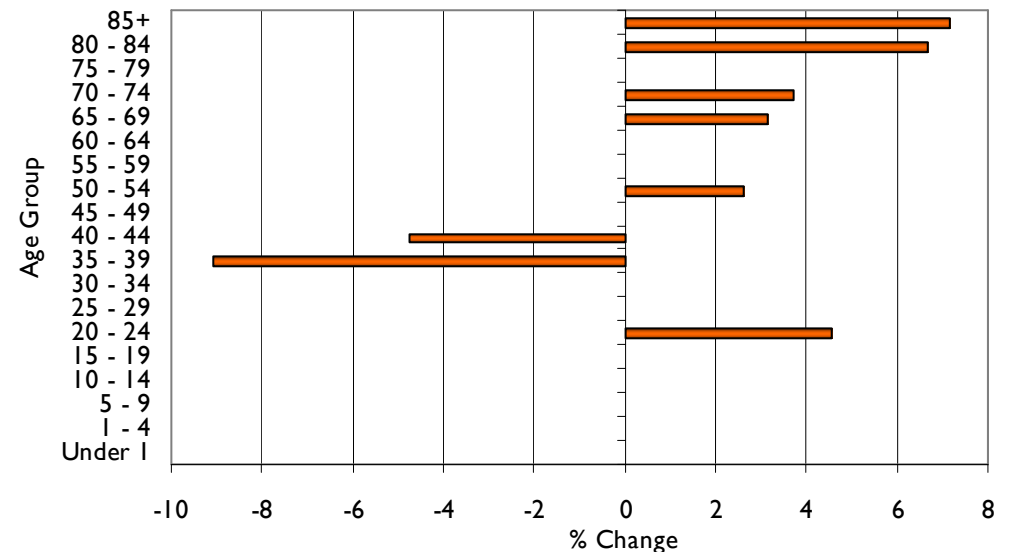


Mid-2010 Population: 51,800

**Mid-2010 Population Estimates by Age Group:
Office for National Statistics (ONS)**



Population Change 2009-10 - Eden



	Population			Numerical Change		% Change	
	2001	2009	2010	2001-10	2009-10	2001-10	2009-10
Total	49,900	51,800	51,800	1,900	0	3.8	0.0
Under 1	500	500	500	0	0	0.0	0.0
1 - 4	2,100	2,000	2,000	-100	0	-4.8	0.0
5 - 9	2,800	2,600	2,600	-200	0	-7.1	0.0
10 - 14	3,000	3,000	3,000	0	0	0.0	0.0
15 - 19	2,700	3,000	3,000	300	0	11.1	0.0
20 - 24	2,100	2,200	2,300	200	100	9.5	4.5
25 - 29	2,500	1,900	1,900	-600	0	-24.0	0.0
30 - 34	3,400	2,100	2,100	-1,300	0	-38.2	0.0
35 - 39	3,700	3,300	3,000	-700	-300	-18.9	-9.1
40 - 44	3,700	4,200	4,000	300	-200	8.1	-4.8
45 - 49	3,500	4,100	4,100	600	0	17.1	0.0
50 - 54	4,100	3,800	3,900	-200	100	-4.9	2.6
55 - 59	3,400	3,900	3,900	500	0	14.7	0.0
60 - 64	3,000	4,200	4,200	1,200	0	40.0	0.0
65 - 69	2,700	3,200	3,300	600	100	22.2	3.1
70 - 74	2,400	2,700	2,800	400	100	16.7	3.7
75 - 79	1,900	2,100	2,100	200	0	10.5	0.0
80 - 84	1,200	1,500	1,600	400	100	33.3	6.7
85+	1,100	1,400	1,500	400	100	36.4	7.1

Note: Figures may not sum due to rounding

In Mid-2010 the total population of Eden was estimated to be 51,800.

Since 2001, the population of Eden has increased by 1,900 people (+3.8%).

However, in the most recent year, 2009-10, the population of Eden remained constant.

Since 2001, the greatest percentage increase by age group occurred in the 60-64 age group (+40%), while the greatest percentage decrease occurred in the 30-34 age group (-38.2%);

Between 2009 and 2010, the greatest percentage increase occurred in the 85+ age group (+7.1%), while the greatest percentage decrease occurred in the 35-39 age group (-9.1%).

When compared to Cumbria, Eden's population has higher proportions of middle and older age adults (40+), but lower proportions of younger children (0-4) and younger adults (15-39).