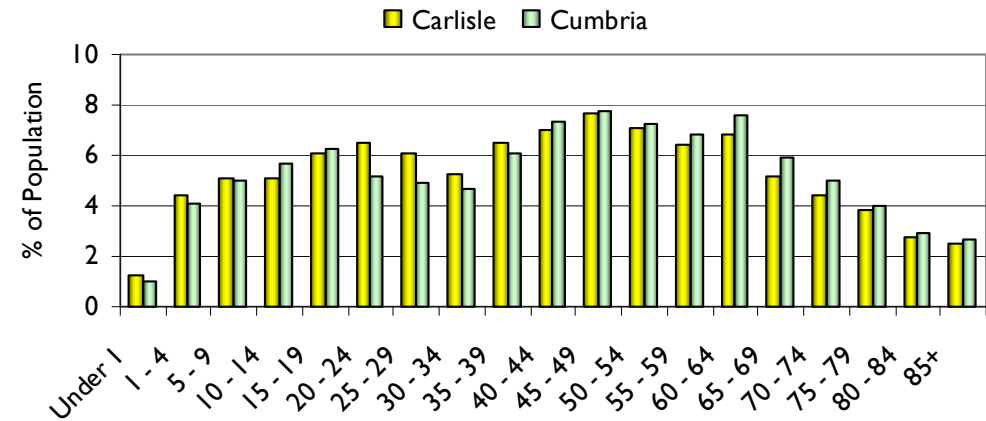
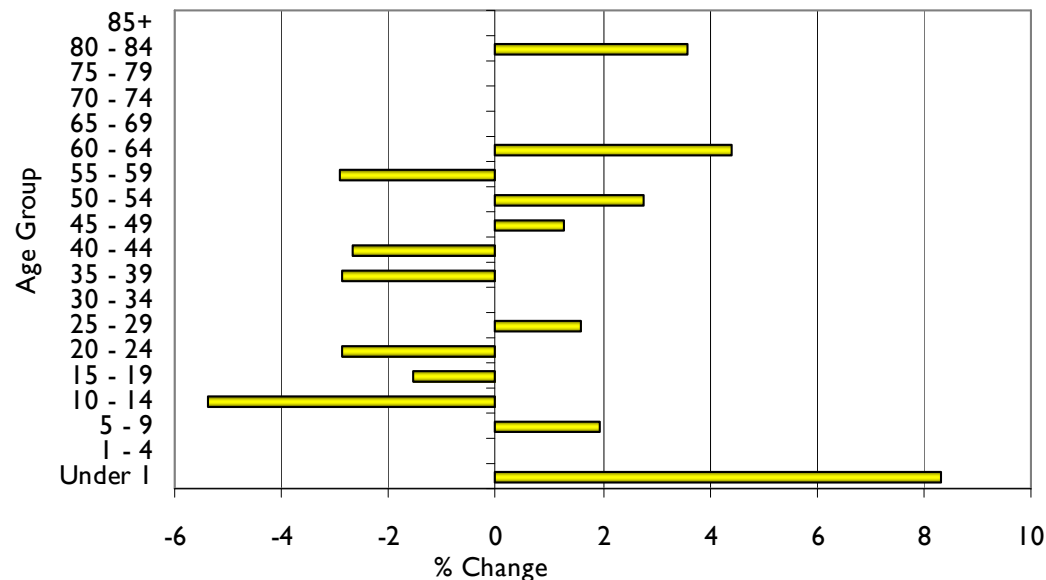


**Mid-2010 Population: 104,500**

**Mid-2010 Population Estimates by Age Group:  
Office for National Statistics (ONS)**



**Population Change 2009-10 - Carlisle**



	Population			Numerical Change		% Change	
	2001	2009	2010	2001-10	2009-10	2001-10	2009-10
Total	100,800	104,700	104,500	3,700	-200	3.7	-0.2
Under 1	1,000	1,200	1,300	300	100	30.0	8.3
1 - 4	4,200	4,600	4,600	400	0	9.5	0.0
5 - 9	6,100	5,200	5,300	-800	100	-13.1	1.9
10 - 14	6,400	5,600	5,300	-1,100	-300	-17.2	-5.4
15 - 19	6,100	6,500	6,400	300	-100	4.9	-1.5
20 - 24	5,300	7,000	6,800	1,500	-200	28.3	-2.9
25 - 29	6,100	6,300	6,400	300	100	4.9	1.6
30 - 34	7,000	5,500	5,500	-1,500	0	-21.4	0.0
35 - 39	7,600	7,000	6,800	-800	-200	-10.5	-2.9
40 - 44	7,600	7,500	7,300	-300	-200	-3.9	-2.7
45 - 49	6,700	7,900	8,000	1,300	100	19.4	1.3
50 - 54	7,200	7,200	7,400	200	200	2.8	2.8
55 - 59	6,000	6,900	6,700	700	-200	11.7	-2.9
60 - 64	5,400	6,800	7,100	1,700	300	31.5	4.4
65 - 69	5,100	5,400	5,400	300	0	5.9	0.0
70 - 74	4,600	4,600	4,600	0	0	0.0	0.0
75 - 79	3,800	4,000	4,000	200	0	5.3	0.0
80 - 84	2,500	2,800	2,900	400	100	16.0	3.6
85+	2,100	2,600	2,600	500	0	23.8	0.0

Note: Figures may not sum due to rounding

In Mid-2010 the total population of Carlisle was estimated to be 104,500.

Since 2001, the population of Carlisle has increased by 3,700 people (+3.7%).

However, in the most recent year, 2009-10, the population of Carlisle decreased by 200 people (-0.2%).

Since 2001, the greatest percentage increase by age group occurred in the 60-64 age group (+31.5%), while the greatest percentage decrease occurred in the 30-34 age group (-21.4%);

Between 2009 and 2010, the greatest percentage increase occurred in the under 1 age group (+8.3%), while the greatest percentage decrease occurred in the 10-14 age group (-5.4%).

When compared to Cumbria, Carlisle's population has higher proportions of younger children (0-9) and younger adults (20-39), but lower proportions of older children (10-19) and middle to older age adults (40-85+).