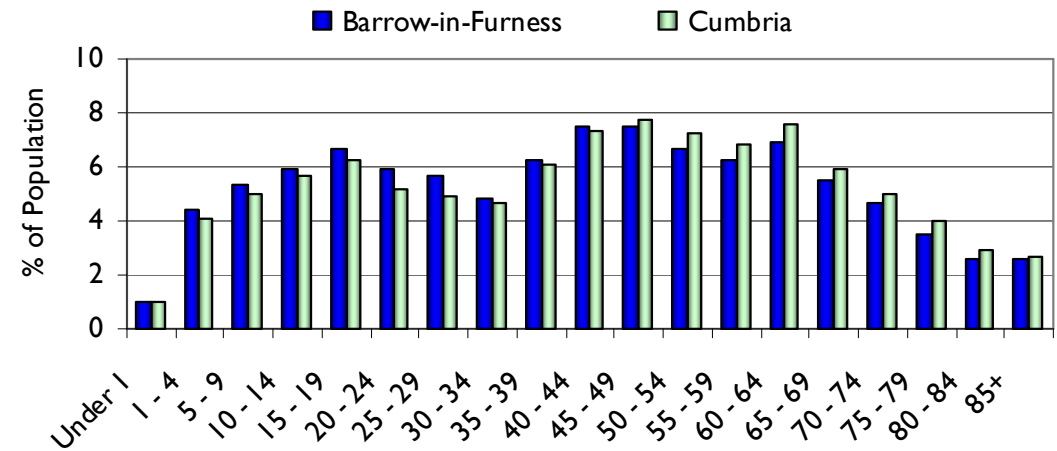
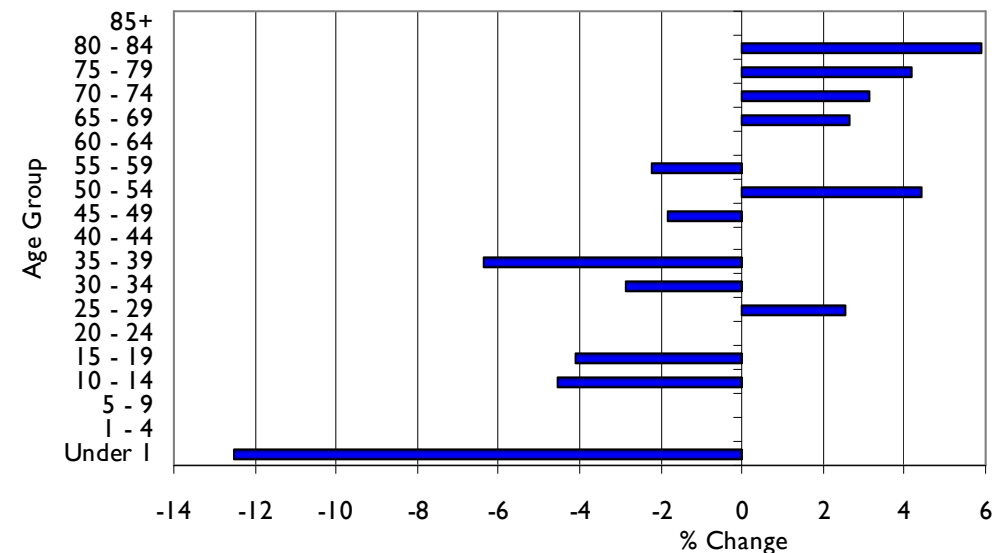


Mid-2010 Population: 70,700

**Mid-2010 Population Estimates by Age Group:
Office for National Statistics (ONS)**



Population Change 2009-10 - Barrow-in-Furness



	Population			Numerical Change		% Change	
	2001	2009	2010	2001-10	2009-10	2001-10	2009-10
Total	72,000	70,900	70,700	-1,300	-200	-1.8	-0.3
Under 1	800	800	700	-100	-100	-12.5	-12.5
1 - 4	3,300	3,100	3,100	-200	0	-6.1	0.0
5 - 9	4,800	3,800	3,800	-1,000	0	-20.8	0.0
10 - 14	5,000	4,400	4,200	-800	-200	-16.0	-4.5
15 - 19	4,400	4,900	4,700	300	-200	6.8	-4.1
20 - 24	3,300	4,200	4,200	900	0	27.3	0.0
25 - 29	4,200	3,900	4,000	-200	100	-4.8	2.6
30 - 34	5,300	3,500	3,400	-1,900	-100	-35.8	-2.9
35 - 39	5,500	4,700	4,400	-1,100	-300	-20.0	-6.4
40 - 44	5,000	5,300	5,300	300	0	6.0	0.0
45 - 49	4,500	5,400	5,300	800	-100	17.8	-1.9
50 - 54	5,200	4,500	4,700	-500	200	-9.6	4.4
55 - 59	4,500	4,500	4,400	-100	-100	-2.2	-2.2
60 - 64	4,000	4,900	4,900	900	0	22.5	0.0
65 - 69	3,400	3,800	3,900	500	100	14.7	2.6
70 - 74	2,900	3,200	3,300	400	100	13.8	3.1
75 - 79	2,400	2,400	2,500	100	100	4.2	4.2
80 - 84	2,000	1,700	1,800	-200	100	-10.0	5.9
85+	1,400	1,800	1,800	400	0	28.6	0.0

Note: Figures may not sum due to rounding

In Mid-2010 the total population of Barrow-in-Furness was estimated to be 70,700.

Since 2001, the population of Barrow-in-Furness has decreased by 1,300 people (-1.8%).

In the most recent year, 2009-10, the population of Barrow-in-Furness decreased by 200 people (-0.3%).

Since 2001, the greatest percentage increase by age group occurred in the 85+ age group (+28.6%), while the greatest percentage decrease occurred in the 30-34 age group (-35.8%);

Between 2009 and 2010, the greatest percentage increase occurred in the 80-84 age group (+5.9%), while the greatest percentage decrease occurred in the under 1 age group (-12.5%).

When compared to Cumbria, Barrow-in-Furness's population has higher proportions of children and younger adults (0-44) and lower proportions of middle and older age adults (45-85+).