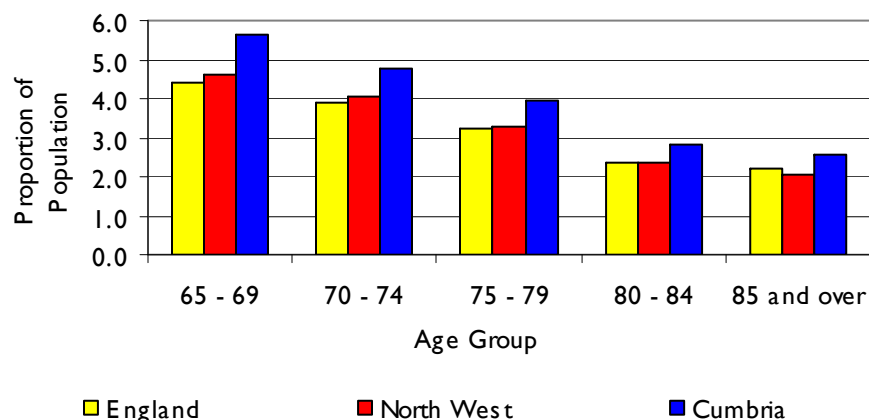


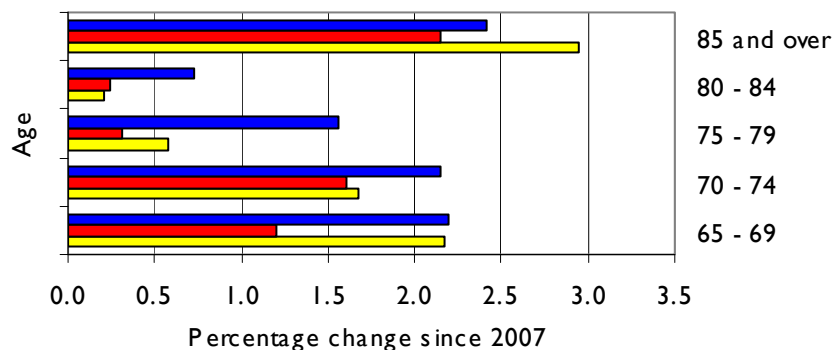
CUMBRIA – Older Adults

	Population		Population Change	
	2007	2008	Numerical	%
Aged 65 - 69 years	27,400	28,000	600	2.2
Aged 70 - 74 years	23,300	23,800	500	2.1
Aged 75 - 79 years	19,200	19,500	300	1.6
Aged 80 - 84 years	13,800	13,900	100	0.7
Aged 85 and over	12,400	12,700	300	2.4
Total aged 65+	96,100	97,900	1,800	1.9

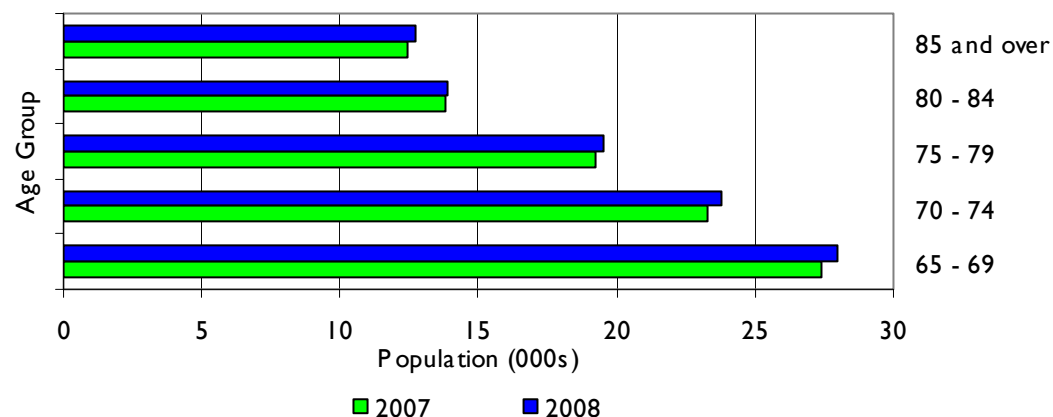
Population Proportions by Age Group (65+ years)



Population Change by Age Group (65+ years) 2007-2008



Cumbria's Population by Age Group (65+ years) 2007-2008



- Overall, the population of residents aged 65+ years in Cumbria increased by 1,800 between 2007 and 2008 (an increase of 1.9%);
- The greatest increase was in the 85 and over age group (2.4%);
- There were also increases across all other 65+ age groups;
- Cumbria has a greater proportion of residents in each of the 65+ age groups than both the North West and England;
- An increase in residents aged 65+ was also seen at a regional and national level between 2007 and 2008;
- The proportionate increase in residents aged 65+ was greater in Cumbria than the North West and England for all but two of the 65+ age groups;
- There were significant variations between districts in Cumbria;
- South Lakeland and Eden had the largest proportions of residents aged 65+;
- Allerdale and Eden experienced the greatest increase in residents aged 65+;
- For further district level information please see the briefing accompanying this summary sheet.