

Summary of Mid-2008 Population Estimates –Cumbria’s Working Age Population

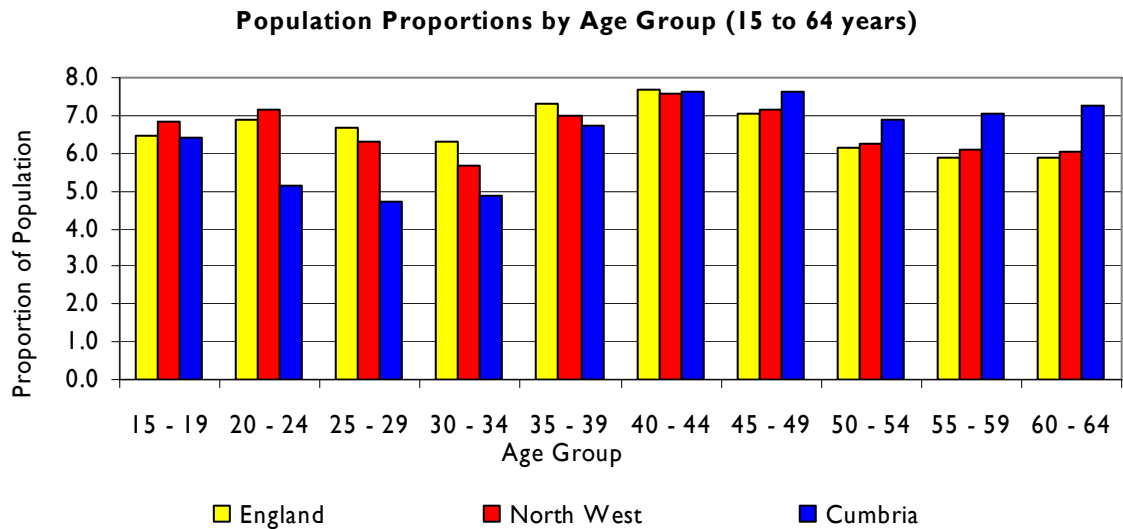
Background

The Office for National Statistics (ONS) produces annual estimates of the resident population of the UK as of 30 June each year, which are known as the ‘Mid-Year Estimates’. The Mid-Year Estimates refer to the number of people who live in the UK as a whole and the constituent counties and areas; providing figures by age and sex subgroups. In August 2009 the ONS released the Mid-2008 Population Estimates. The following report provides an analysis of Cumbria’s 15 to 64 year old population based on these estimates.

Cumbria’s Working Age Population - 2008

Based on the Mid-2008 Population Estimates, Figure 1 displays Cumbria’s 15 to 64 year old population, by age group, as a proportion of Cumbria’s population as a whole. Figure 1 also shows the comparative proportions for England and the North West.

Figure 1:

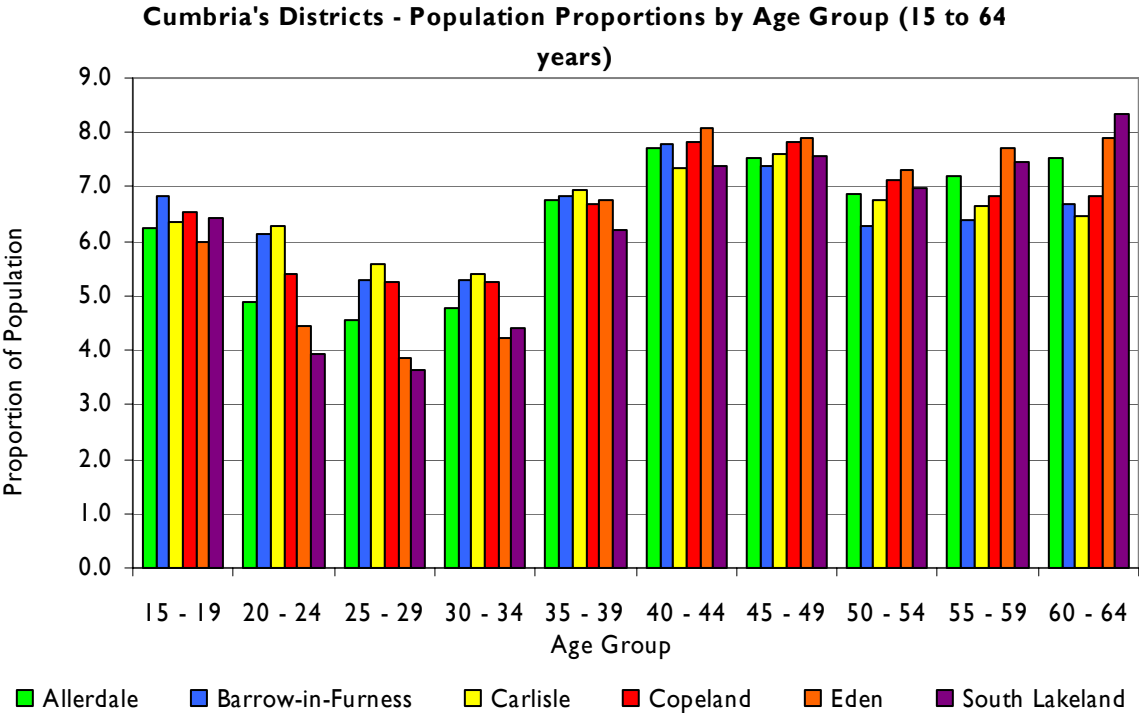


On inspection of Figure 1, it is clear that, when compared to the North West and England, Cumbria has a smaller proportion of residents in the younger working age groups and a higher proportion of residents in the older working

age groups. Overall, 64.3% of Cumbria’s population is aged 15-64 years, while this age group accounts for 66.3% of the national population and 66.0% of the regional population.

Figure 2 displays the 15-64 year old population, by age group, as a proportion of the total population for each of Cumbria’s six districts.

Figure 2:



Barrow-in-Furness had the highest proportion of residents in the youngest working age group (15-19 years), while Carlisle had the highest proportion of residents in the four next youngest age groups (20-24 years, 25-29 years, 30-34 years and 35-39 years). Eden had the highest proportion of residents in the middle-age groups (40-44 years, 45-49 years, 50-54 years, and 55 to 59 years), while South Lakeland had the highest proportion of residents in the oldest working age group (60-64 years). Inversely, Eden and South Lakeland had the smallest proportions of residents in the younger working age groups while Carlisle and Barrow-in-Furness had the smallest proportions of residents in the older working age groups.

Cumbria's Working Age Population – 2007 to 2008 Changes

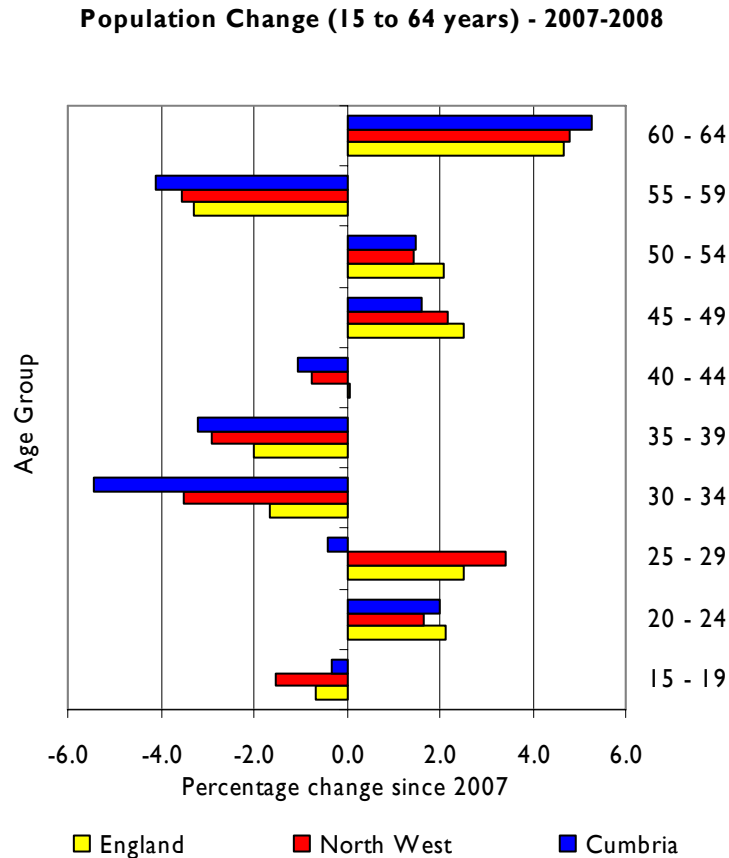
Table I compares the Mid-2008 Estimates for the number residents in Cumbria aged 15-64 years with the Mid-2007 Estimates for the same age range.

Table I: Cumbria's Working Age Population – 2007 to 2008 Changes				
	Population		Change	
	2007	2008	Numerical	%
Aged 15 - 19 years	32,000	31,900	-100	-0.3
Aged 20 - 24 years	25,100	25,600	500	2.0
Aged 25 - 29 years	23,500	23,400	-100	-0.4
Aged 30 - 34 years	25,700	24,300	-1,400	-5.4
Aged 35 - 39 years	34,400	33,300	-1,100	-3.2
Aged 40 - 44 years	38,400	38,000	-400	-1.0
Aged 45 - 49 years	37,200	37,800	600	1.6
Aged 50 - 54 years	33,600	34,100	500	1.5
Aged 55 - 59 years	36,500	35,000	-1,500	-4.1
Aged 60 - 64 years	34,300	36,100	1,800	5.2
Total aged 15 - 64	320,700	319,500	-1,200	-0.4

On inspection of Table I, it can be seen that population of residents aged 15 to 64 years in Cumbria decreased by 1,200 between 2007 and 2008 (a decrease of -0.4%). The greatest decrease was in the 30 to 34 age group (-5.4%). There were also decreases in the 15-19 age group (-0.3%), the 25-29 age group (-0.4%), the 35-39 age group (-3.2%), the 40-44 age group (-1.0%), and the 55-59 age group (-4.1%). However, despite the general decrease in the working age population in Cumbria, some age groups did increase between 2007 and 2008; the 20-24 age group, the 45-49 age group, the 50-54 age group and the 60-64 age group. The greatest increase was in the 60-64 age group (5.2%).

Figure 3 shows the proportional change in Cumbria's 15-64 population between 2007 and 2008 compared with changes in the 15-64 population both regionally and nationally between 2007 and 2008.

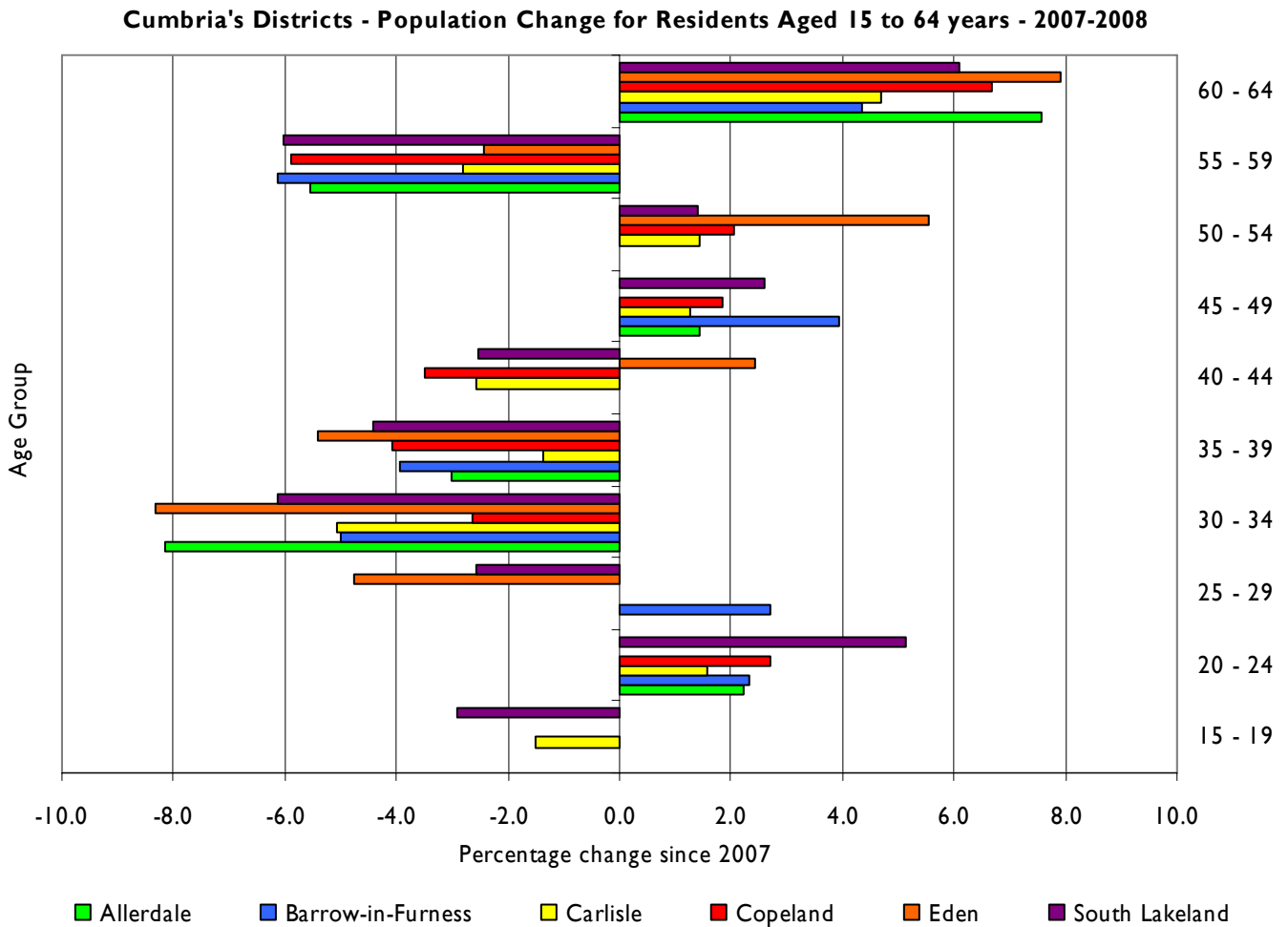
Figure 3:



Looking at Figure 3, it is clear that the changes seen in Cumbria's 15-64 population between 2007 and 2008 were similar to those seen at a regional and national level. However, compared to England and the North West, Cumbria experienced a slight decrease, as opposed to the national and regional increase, in the 25-29 age group, and a much greater decrease in the 30-34 age group.

Figure 4 shows the proportional change in relation to the 15-64 year old population for each of Cumbria's six districts between 2007 and 2008.

Figure 4:



On viewing Figure 4, it can be seen that the Cumbria's decrease in the youngest age group (15-19 years) has been generated by just two districts; South Lakeland and Carlisle. However, South Lakeland experienced a greater increase than the other five districts in the next youngest age group (20-24 years).

Contrary to the general trend, Barrow-in-Furness was the only district to experience an increase in the 25-29 age group. Similarly, Eden was the only district to experience an increase in the 40-44 year old group. Eden and Allerdale experienced significant decreases in the 30-34 age group and significant increases in the oldest working age group (60-64 years).

For more information please contact:

Cumbria Intelligence Observatory: info@cumbriaobservatory.org.uk